



6213 Gunslinger Drive
 Colorado Springs, CO 80923
 COMMUNITY: Indigo Ranch



Single Family



3171 SQFT



5 Beds



3 Baths



0.21 Acre



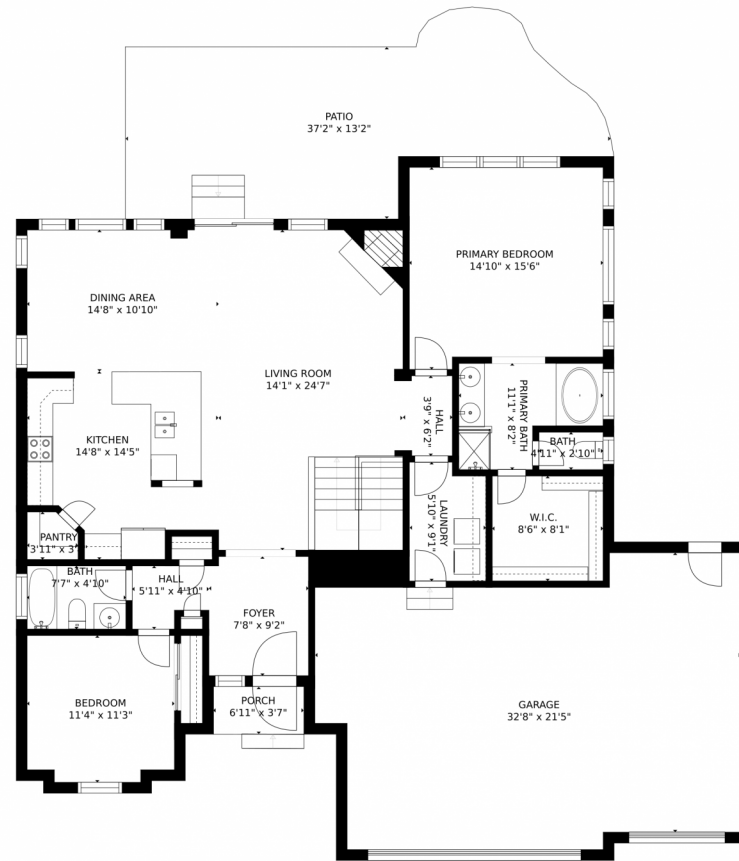
Eddie Hurt
 719-339-3765
 ehurt@erashields.com
<https://www.ColoradoSpringsRealEstate.com>



Scan code
 for more
 property
 details



6213 Gunslinger Drive, Colorado Springs, CO 80923 – Main Level



GROSS INTERNAL AREA
FLOOR 1: 1345 sq. ft., FLOOR 2: 1512 sq. ft.
EXCLUDED AREAS: , GARAGE: 645 sq. ft.
PATIO: 418 sq. ft., PORCH: 25 sq. ft.
TOTAL: 2857 sq. ft.
MEASUREMENTS CALCULATED BY V1Photos.com ARE DEEMED HIGHLY RELIABLE BUT NOT GUARANTEED.



Disclaimer: Sizes and Dimensions are Approximate, Actual May Vary.



Eddie Hurt
719-339-3765
ehurt@erashields.com
<https://www.ColoradoSpringsRealEstate.com>



Scan code
for more
property
details



6213 Gunslinger Drive, Colorado Springs, CO 80923 – Lower Level



GROSS INTERNAL AREA
FLOOR 1: 1345 sq. ft. FLOOR 2: 1512 sq. ft.
EXCLUDED AREAS: GARAGE: 645 sq. ft.
PATIO: 418 sq. ft. PORCH: 25 sq. ft.
TOTAL: 2857 sq. ft.
MEASUREMENTS CALCULATED BY V1Photos.COM ARE DEEMED HIGHLY RELIABLE BUT NOT GUARANTEED.



Disclaimer: Sizes and Dimensions are Approximate, Actual May Vary.



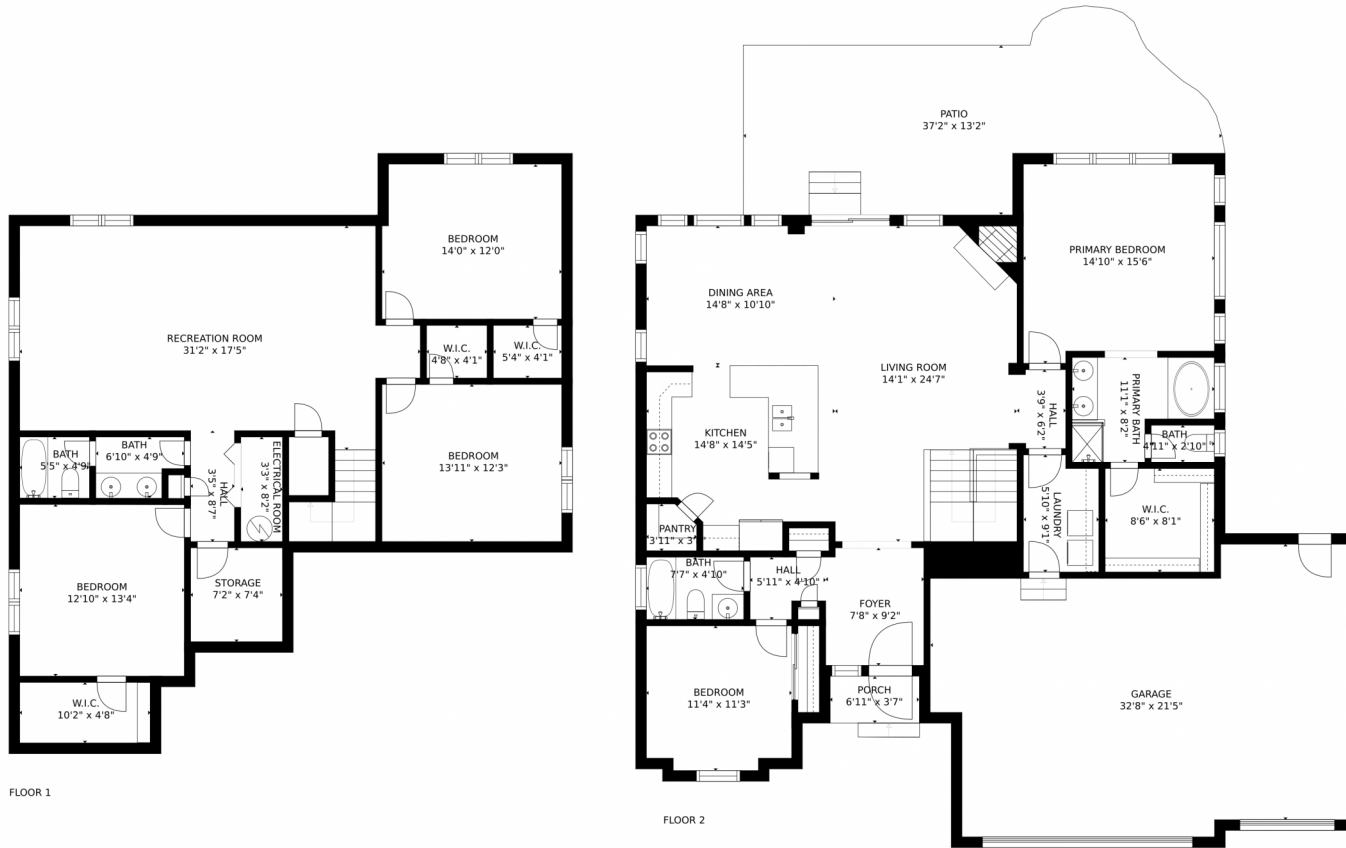
Eddie Hurt
719-339-3765
ehurt@erashields.com
<https://www.ColoradoSpringsRealEstate.com>



Scan code for more property details



6213 Gunslinger Drive, Colorado Springs, CO 80923 – All Levels



FLOOR 1

FLOOR 2

GROSS INTERNAL AREA
FLOOR 1: 1345 sq. ft, FLOOR 2: 1512 sq. ft
EXCLUDED AREAS: , GARAGE: 645 sq. ft
PATIO: 418 sq. ft, PORCH: 25 sq. ft
TOTAL: 2857 sq. ft

MEASUREMENTS CALCULATED BY V1Photos.com ARE DEEMED HIGHLY RELIABLE BUT NOT GUARANTEED.

Disclaimer: Sizes and Dimensions are Approximate, Actual May Vary.



Eddie Hurt

719-339-3765

ehurt@erashields.com

<https://www.ColoradoSpringsRealEstate.com>



Scan code
for more
property
details

