



5631 S Rome St
 Aurora, CO 80015
 COMMUNITY: Saddle Rock Ridge

MLS # 2115471



Single Family 3563 SQFT 5 Beds 3 Baths 3 Car 0.23 Acre

PROPERTY DETAILS

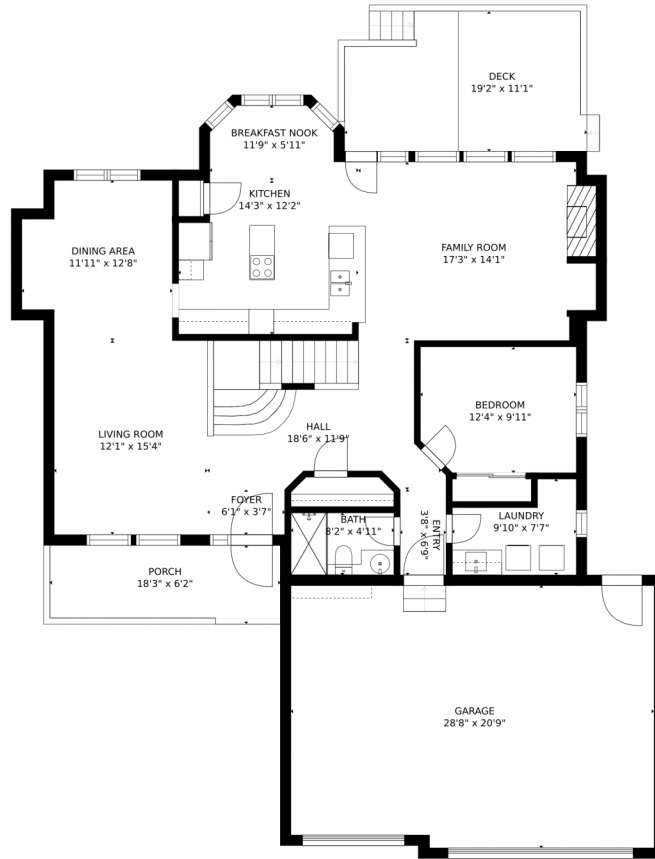
Overall the property is designed to delight and built to endure. Charming curb appeal on Southeast Facing Lot with attention to architectural detail (Very crisp & clean). There is so much beautiful natural light flowing in through the windows (including the basement) you barely need to turn on the lights. Splendid eat-in Kitchen, Center Island with built-in Cooktop, Double Oven, Bay window, Huge amount of Cabinet Storage & adjoins the main floor Family Room with ample space for fun gatherings with friends, neighbors, and family. Giant Primary Suite with Bay-window, 5-piece bath, Walk-in Closet and Vaulted Ceilings. High Vaulted Ceilings and 9ft ceilings, as well. Formal Living & Dining Rooms. Impressive Entry/Foyer & Staircase. Main Floor Study or can be a Main Floor Bedroom (with closet and quick access to the main level 3/4 bath with oversized shower). 3 car attached garage with room for all your vehicles and storage galore, also includes a service door to the backyard. Open, Garden Level (Daylight) Basement ready for your own personal finishes, etc. Quick access to Cherry Creek Schools, parks, shopping, and transportation, only 22 minutes to Denver International Airport. Great fun to be had in the fully fenced backyard, with 188 SQFT Deck. Property is owner occupied



Shawn Engel
 303-308-8000
 shawnengel@earthlink.net
 http://www.corealestateonline.com



5631 S Rome St, Aurora, CO 80015 – 1st Floor



GROSS INTERNAL AREA
FLOOR 1: 719 sq. ft, FLOOR 2: 1342 sq. ft
FLOOR 3: 1235 sq. ft, EXCLUDED AREAS:
GARAGE: 584 sq. ft, DECK: 193 sq. ft
PORCH: 107 sq. ft
TOTAL: 3296 sq. ft

MEASUREMENTS CALCULATED BY V1Photos.com ARE DEEMED HIGHLY RELIABLE BUT NOT GUARANTEED.



Disclaimer: Sizes and Dimensions are Approximate, Actual May Vary.



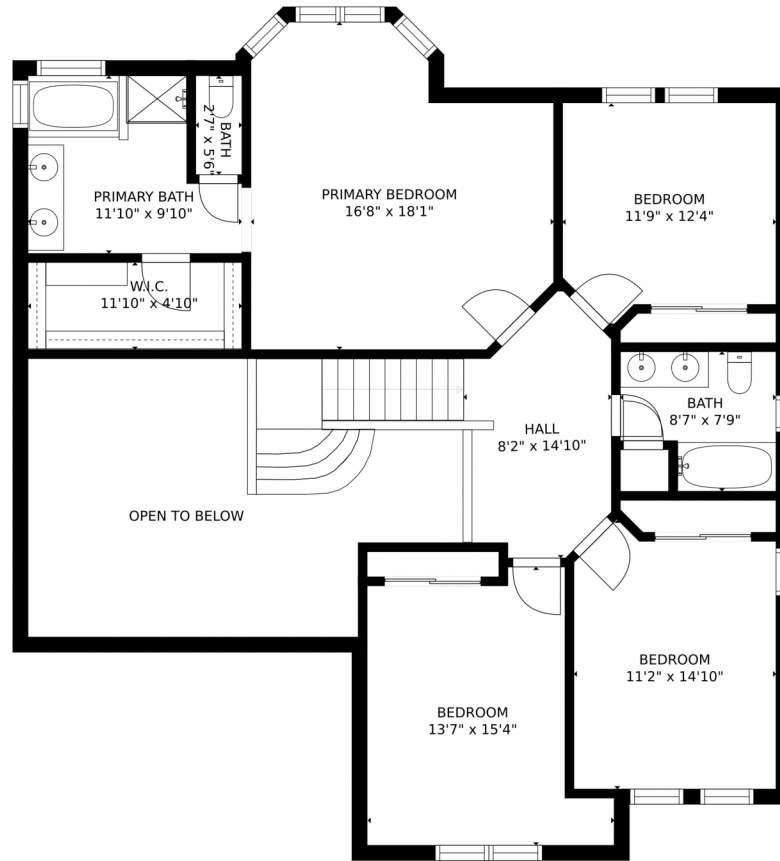
Shawn Engel
303-308-8000
shawnengel@earthlink.net
<http://www.corealestateonline.com>



Scan code
for more
property
details



5631 S Rome St, Aurora, CO 80015 – 2nd Floor



GROSS INTERNAL AREA
FLOOR 1: 719 sq. ft, FLOOR 2: 1342 sq. ft
FLOOR 3: 1235 sq. ft, EXCLUDED AREAS:
GARAGE: 584 sq. ft, DECK: 193 sq. ft
PORCH: 107 sq. ft
TOTAL: 3296 sq. ft

MEASUREMENTS CALCULATED BY V1Photos.com ARE DEEMED HIGHLY RELIABLE BUT NOT GUARANTEED.



Disclaimer: Sizes and Dimensions are Approximate, Actual May Vary.

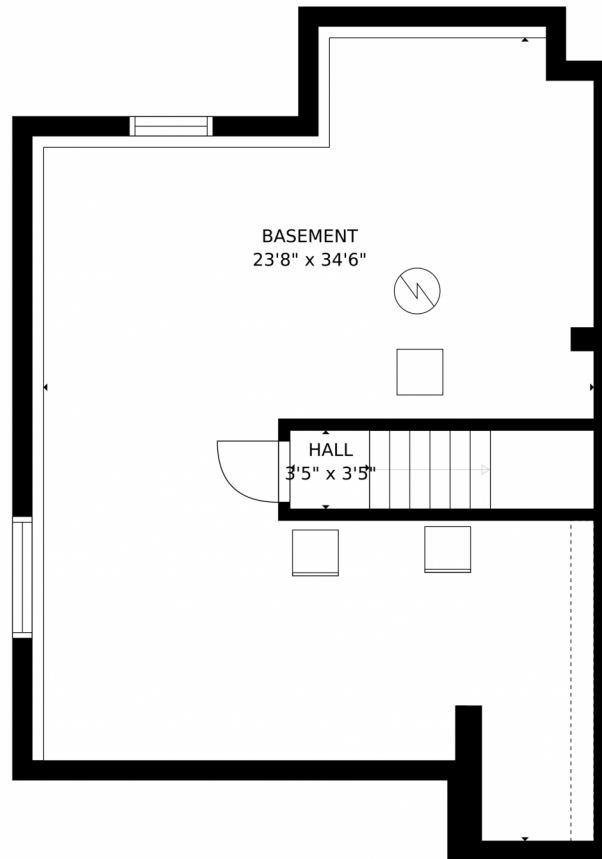


Shawn Engel
303-308-8000
shawnengel@earthlink.net
<http://www.corealestateonline.com>



Scan code
for more
property
details





GROSS INTERNAL AREA
FLOOR 1: 719 sq. ft, FLOOR 2: 1342 sq. ft
FLOOR 3: 1235 sq. ft, EXCLUDED AREAS:
GARAGE: 584 sq. ft, DECK: 193 sq. ft
PORCH: 107 sq. ft
TOTAL: 3296 sq. ft

MEASUREMENTS CALCULATED BY V1Photos.COM ARE DEEMED HIGHLY RELIABLE BUT NOT GUARANTEED.



Disclaimer: Sizes and Dimensions are Approximate, Actual May Vary.



Shawn Engel
303-308-8000
shawnengel@earthlink.net
<http://www.corealestateonline.com>



Scan code
for more
property
details

5631 S Rome St, Aurora, CO 80015 – All Floors



GROSS INTERNAL AREA
FLOOR 1: 719 sq. ft, FLOOR 2: 1342 sq. ft
FLOOR 3: 1235 sq. ft, EXCLUDED AREAS:
GARAGE: 584 sq. ft, DECK: 193 sq. ft
PORCH: 107 sq. ft
TOTAL: 3296 sq. ft

MEASUREMENTS CALCULATED BY V1Photos.com ARE DEEMED HIGHLY RELIABLE BUT NOT GUARANTEED.



Disclaimer: Sizes and Dimensions are Approximate, Actual May Vary.



Shawn Engel
303-308-8000
shawnengel@earthlink.net
<http://www.corealestateonline.com>



Scan code
for more
property
details

