

2590 Hollywood Drive  
Pueblo, CO 81005



 Single Family

 1920 SQFT

 5 Beds

 2 Baths

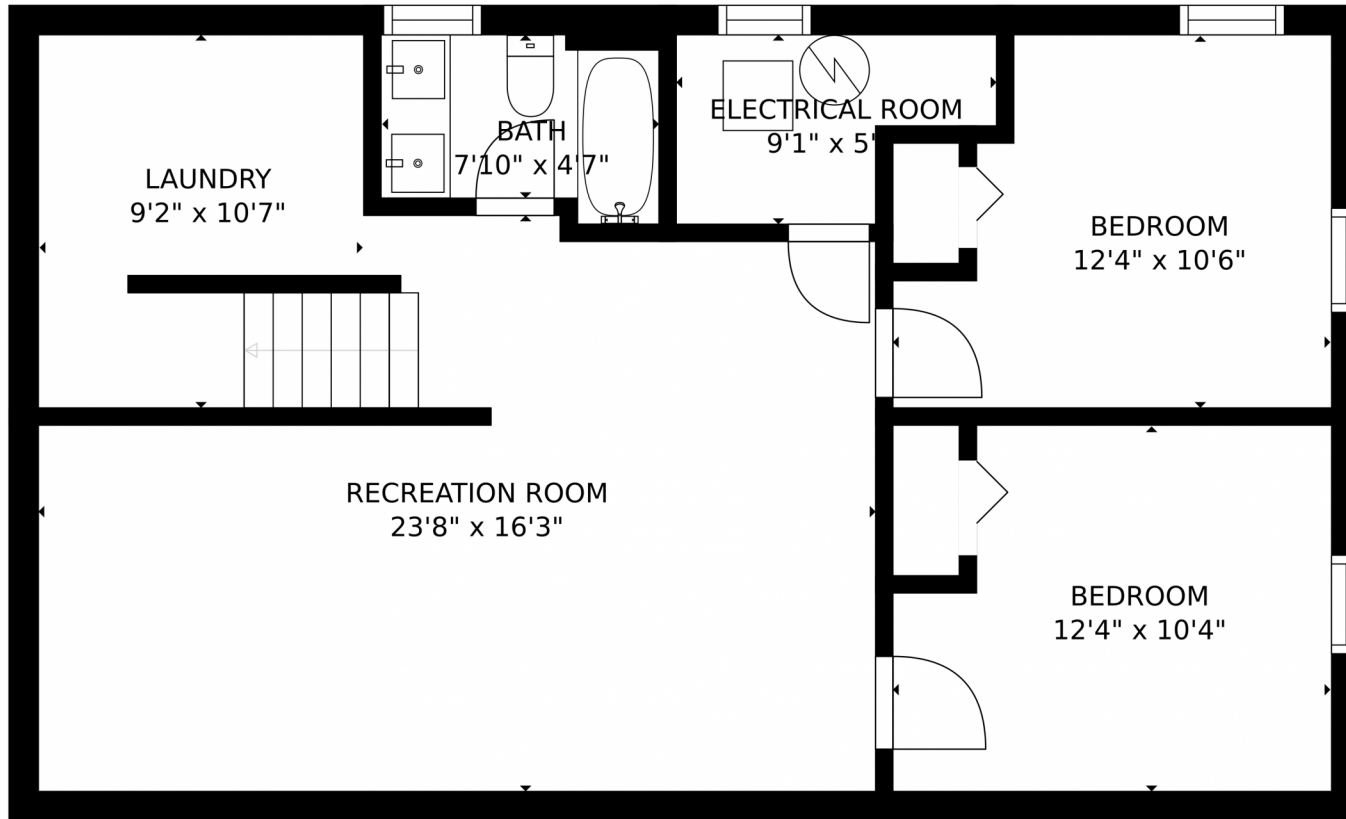
 1 Car



Scan code  
for more  
property  
details



2590 Hollywood Drive, Pueblo, CO 81005 – Lower Level



GROSS INTERNAL AREA  
FLOOR 1: 783 sq. ft., FLOOR 2: 861 sq. ft.  
EXCLUDED AREAS: , GARAGE: 247 sq. ft.  
PATIO: 252 sq. ft.  
TOTAL: 1643 sq. ft.

MEASUREMENTS CALCULATED BY V1Photos.COM ARE DEEMED HIGHLY RELIABLE BUT NOT GUARANTEED.

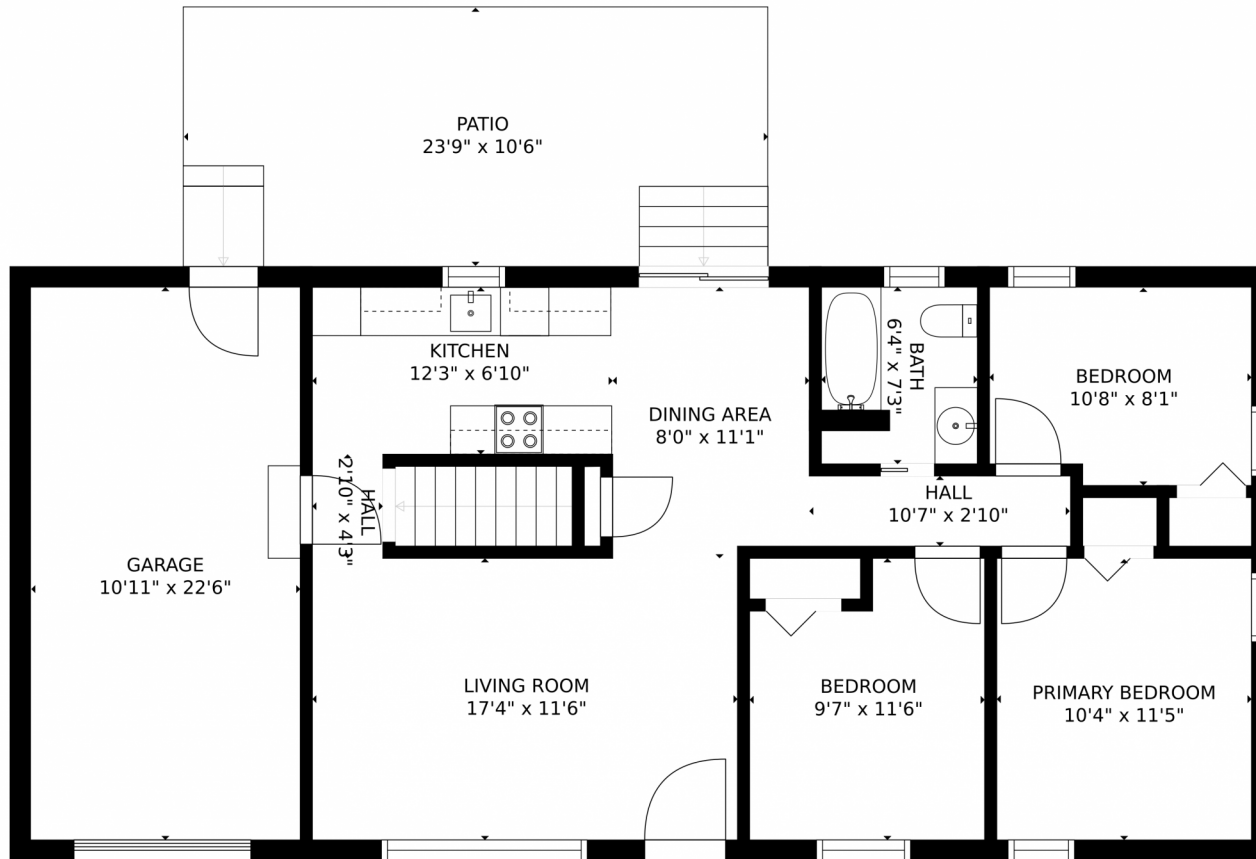


Disclaimer: Sizes and Dimensions are Approximate, Actual May Vary.



Scan code  
for more  
property  
details

# 2590 Hollywood Drive, Pueblo, CO 81005 – Main Level



GROSS INTERNAL AREA  
FLOOR 1: 783 sq. ft. FLOOR 2: 861 sq. ft  
EXCLUDED AREAS: GARAGE: 247 sq. ft  
PATIO: 252 sq. ft  
TOTAL: 1643 sq. ft  
MEASUREMENTS CALCULATED BY V1Photos.com ARE DEEMED HIGHLY RELIABLE BUT NOT GUARANTEED.



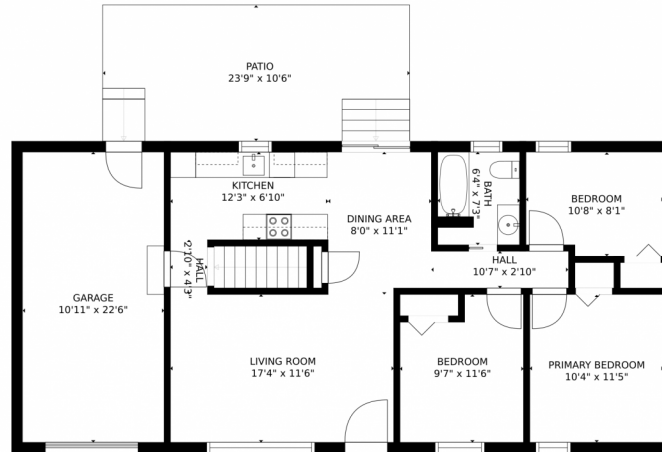
Disclaimer: Sizes and Dimensions are Approximate, Actual May Vary.



Scan code for more property details



# 2590 Hollywood Drive, Pueblo, CO 81005 – All Levels



FLOOR 2



FLOOR 1

GROSS INTERNAL AREA  
FLOOR 1: 783 sq. ft. FLOOR 2: 861 sq. ft  
EXCLUDED AREAS: , GARAGE: 247 sq. ft  
PATIO: 252 sq. ft  
TOTAL: 1643 sq. ft

MEASUREMENTS CALCULATED BY V1Photos.com ARE DEEMED HIGHLY RELIABLE BUT NOT GUARANTEED.



Disclaimer: Sizes and Dimensions are Approximate, Actual May Vary.



Scan code  
for more  
property  
details