



Condominium



1000 SQFT



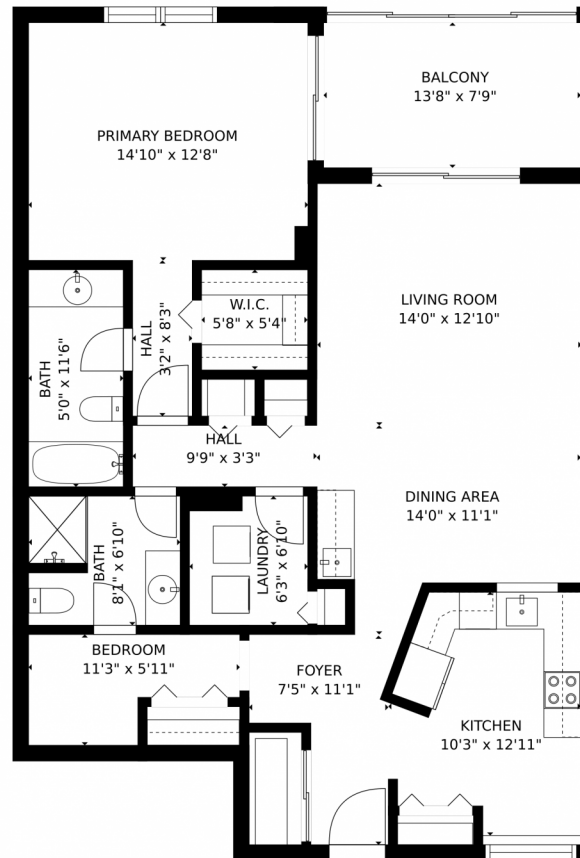
Meirav Susi
954-214-4810
meirav@bellsouth.net
<https://www.MeiravSells.com>



Scan code
for more
property
details



2208 South Cypress Bend Drive, Pompano Beach, FL 33069 — Main Floor (5)



GROSS INTERNAL AREA
FLOOR 1: 1095 sq. ft. EXCLUDED AREAS:
BALCONY: 106 sq. ft.
TOTAL: 1095 sq. ft.
MEASUREMENTS CALCULATED BY V1Photos.COM ARE DEEMED HIGHLY RELIABLE BUT NOT GUARANTEED.



Disclaimer: Sizes and Dimensions are Approximate, Actual May Vary.



Meirav Susi
954-214-4810
meirav@bellsouth.net
<https://www.MeiravSells.com>

