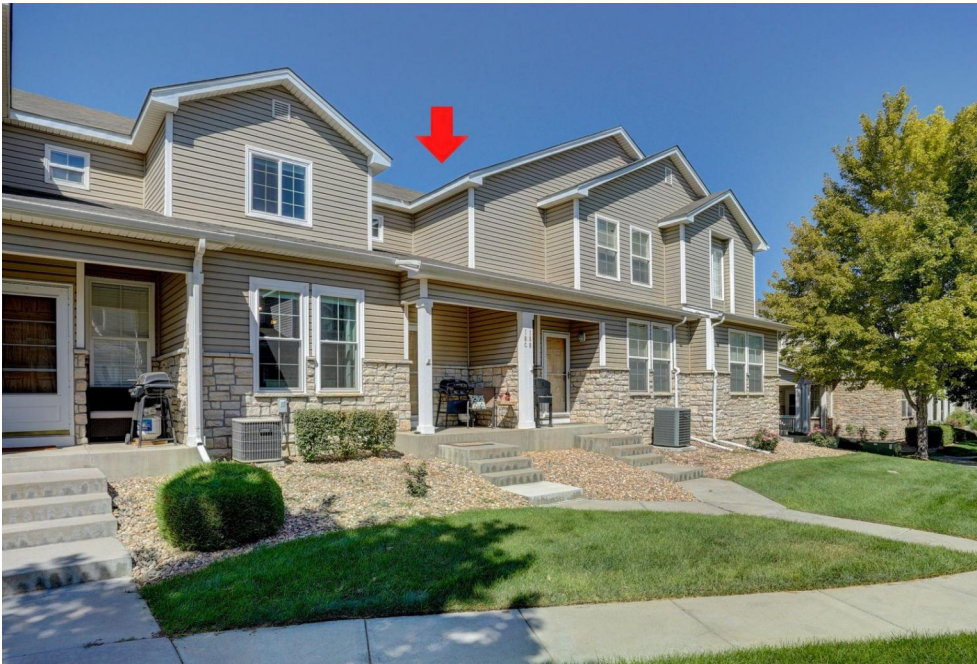




A PERFECT LOCATION REALTY

9758 Laredo Street Unit 18C
Commerce City, CO 80022
COMMUNITY: Fronterra Village

PRICE \$395,000



Condominium



1201 SQFT



2 Beds



2/1 Baths



2 Car



0.07 Acre

PROPERTY DETAILS

Pride of ownership and complete remodel. Come settle in to this gorgeous two-story condo. It features 2 bedrooms with 2 1/2 baths and 2 car garage. This wonderful ground floor entrance starts with a cozy covered front porch, which then walks into open great room, with beautiful new vinyl plank flooring, flowing through the main level. Additionally the living room has new windows, new paint and updated ceiling fan. Adjacent you look into a stunning new kitchen with soft close cabinets, quartz counters, beautiful glass tile backsplash and 2022 stainless steel appliances, new under mounted sink, new faucet, plus drawer and handle pulls. The 1/2 bath mimics the gorgeous kitchen with new vanity, mirror and lighting. Head upstairs where you will find the new carpet flows up the stairs to hall and bedrooms. The primary bedroom has new picture window, walk-in closet, 3/4 en-suite with new double sink vanity, soft pull cabinets, quartz counter, stylish lighting, new flooring and a new custom shower insert. Head down the hall and you will find your conveniently located laundry room, a new vanity in secondary bath and large 2nd bedroom or office. 2 car attached garage w/opener. 14 mo. BRHW Gold, transferable to the buyer. New community you will find this home is conveniently located just minutes to several parks, schools, King Sooper's Marketplace, Ace Hardware, State House restaurant, Pour Tap House and more. Golfer's enjoy



Kristen Miller
303-503-9823

kristen@aperfectlocationrealty.com
<http://www.aperfectlocationrealty.com/>



Scan code
for more
property
details



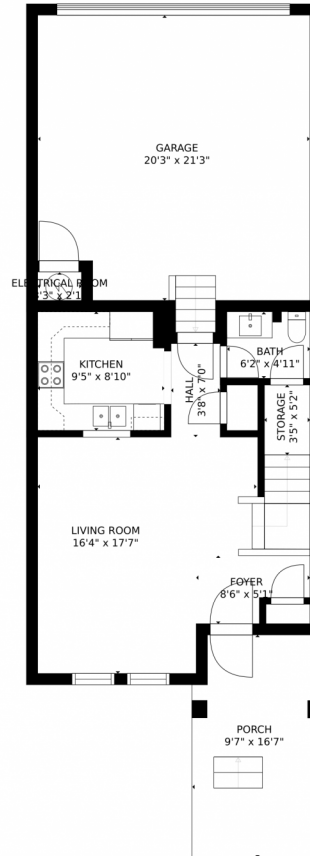
Buffalo Run Golf course up the road. There are several access points to make your commute easy to Denver (Coo's Field), Aurora (Anschutz Medical Campus) or Brighton (Prairie Center - Home Depot, Target, Ross, Chili's and Old Chicago and more) and for travel DIA, all within a 15 -25 minute commute



Kristen Miller
303-503-9823
kristen@aperfectlocationrealty.com
<http://www.aperfectlocationrealty.com/>



9758 Laredo Street Unit 18C, Commerce City, CO 80022 – Main Level



GROSS INTERNAL AREA
FLOOR 1: 511 sq. ft. FLOOR 2: 690 sq. ft.
EXCLUDED AREAS: , GARAGE: 426 sq. ft
PORCH: 155 sq. ft
TOTAL: 1201 sq. ft

MEASUREMENTS CALCULATED BY V1Photos.com ARE DEEMED HIGHLY RELIABLE BUT NOT GUARANTEED.



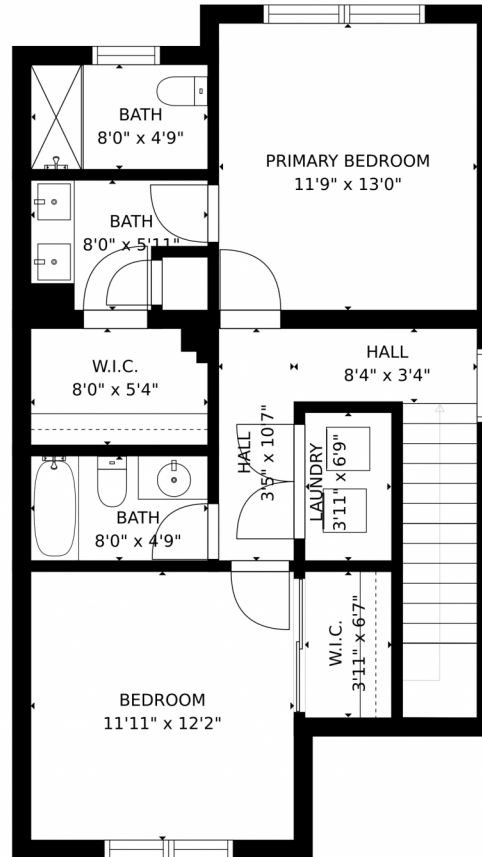
Disclaimer: Sizes and Dimensions are Approximate, Actual May Vary.



Kristen Miller
303-503-9823
kristen@aperfectlocationrealty.com
<http://www.aperfectlocationrealty.com/>



9758 Laredo Street Unit 18C, Commerce City, CO 80022 – Upper Level



GROSS INTERNAL AREA
FLOOR 1: 511 sq. ft. FLOOR 2: 690 sq. ft
EXCLUDED AREAS: , GARAGE: 426 sq. ft
PORCH: 155 sq. ft
TOTAL: 1201 sq. ft

MEASUREMENTS CALCULATED BY V1Photos.com ARE DEEMED HIGHLY RELIABLE BUT NOT GUARANTEED.



Disclaimer: Sizes and Dimensions are Approximate, Actual May Vary.

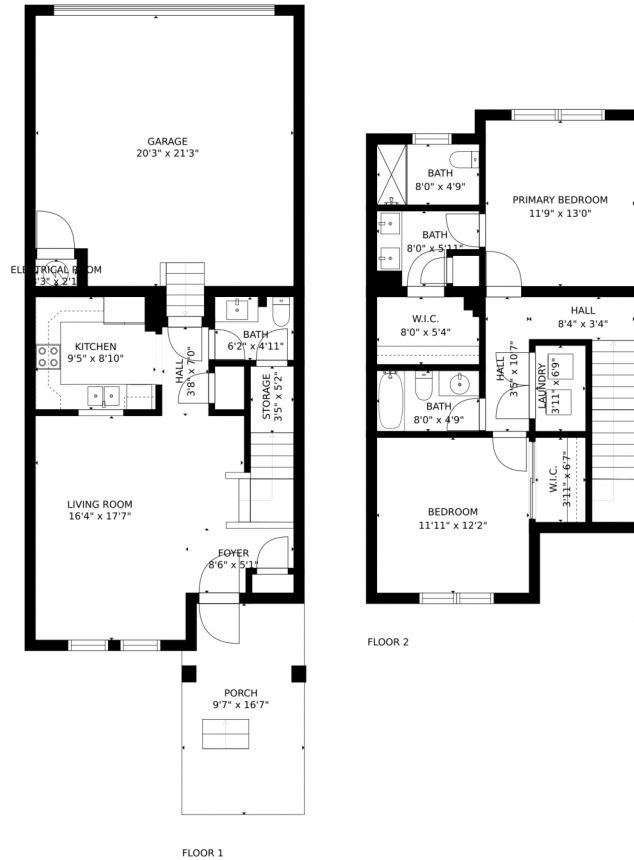


Kristen Miller
303-503-9823
kristen@aperfectlocationrealty.com
<http://www.aperfectlocationrealty.com/>



Scan code
for more
property
details

9758 Laredo Street Unit 18C, Commerce City, CO 80022 – All Levels



GROSS INTERNAL AREA
FLOOR 1: 511 sq. ft. FLOOR 2: 690 sq. ft
EXCLUDED AREAS: , GARAGE: 426 sq. ft
PORCH: 155 sq. ft
TOTAL: 1201 sq. ft

MEASUREMENTS CALCULATED BY V1Photos.com ARE DEEMED HIGHLY RELIABLE BUT NOT GUARANTEED.



Disclaimer: Sizes and Dimensions are Approximate, Actual May Vary.



Kristen Miller
303-503-9823
kristen@aperfectlocationrealty.com
<http://www.aperfectlocationrealty.com/>



Scan code
for more
property
details

