



Single Family



2708 SQFT



**Taylor Haas**

303-665-7368

taylorh@coloradorpm.com

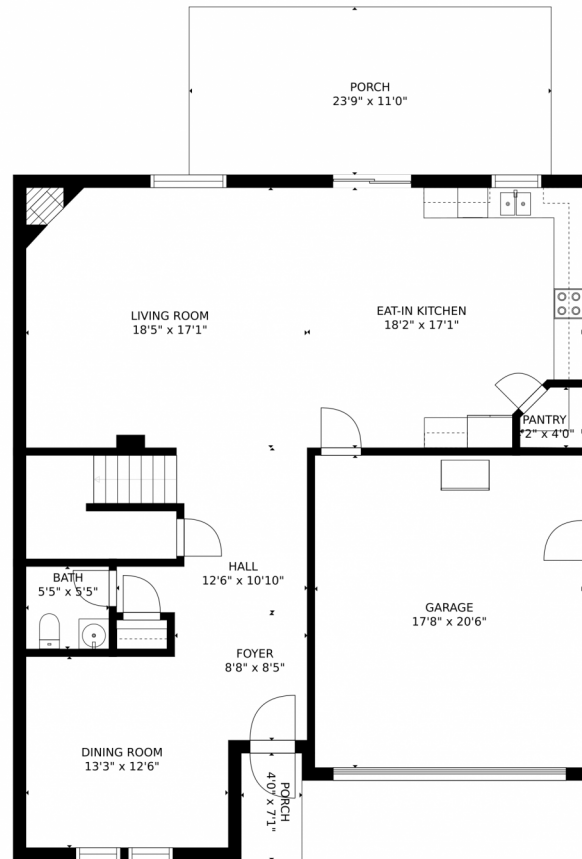
<https://www.coloradorpm.com/available-rental-properties-denver>



Scan code  
for more  
property  
details



# 3663 Winter Sun Drive, Colorado Springs, CO 80925 – Main Level



GROSS INTERNAL AREA  
FLOOR 1: 1071 sq. ft. FLOOR 2: 1477 sq. ft.  
EXCLUDED AREAS: GARAGE: 361 sq. ft.  
PORCH: 290 sq. ft.  
TOTAL: 2548 sq. ft.

MEASUREMENTS CALCULATED BY V1Photos.com ARE DEEMED HIGHLY RELIABLE BUT NOT GUARANTEED.



Disclaimer: Sizes and Dimensions are Approximate, Actual May Vary.



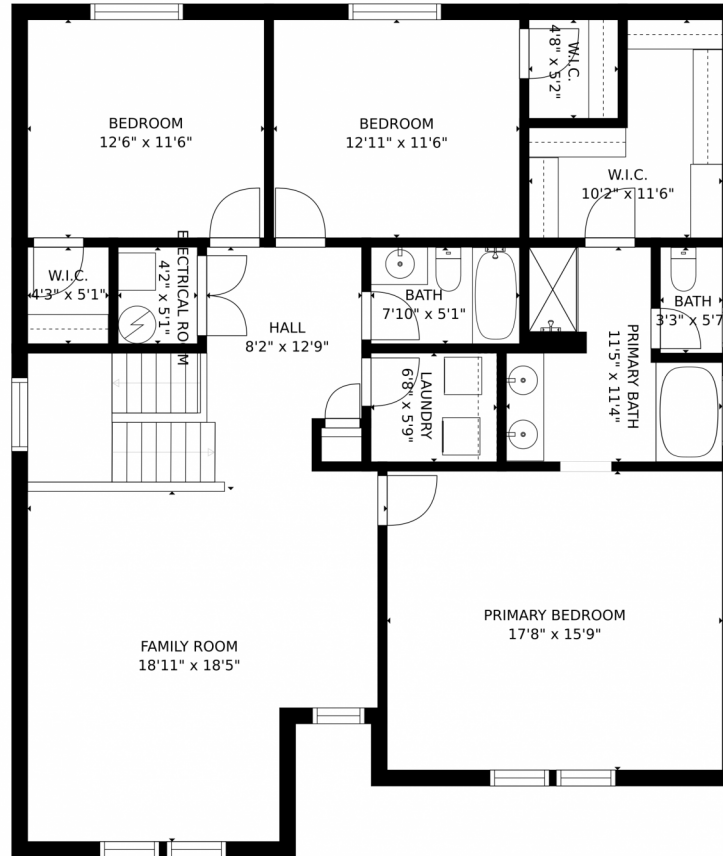
**Taylor Haas**  
303-665-7368  
taylorh@coloradorpm.com  
<https://www.coloradorpm.com/available-rental-properties-denver>



Scan code  
for more  
property  
details



# 3663 Winter Sun Drive, Colorado Springs, CO 80925 – Upper Level



GROSS INTERNAL AREA  
FLOOR 1: 1071 sq. ft, FLOOR 2: 1477 sq. ft  
EXCLUDED AREAS: , GARAGE: 361 sq. ft  
PORCH: 290 sq. ft  
TOTAL: 2548 sq. ft  
MEASUREMENTS CALCULATED BY V1Photos.com ARE DEEMED HIGHLY RELIABLE BUT NOT GUARANTEED.



Disclaimer: Sizes and Dimensions are Approximate, Actual May Vary.



**Taylor Haas**  
303-665-7368  
taylorh@coloradorpm.com  
<https://www.coloradorpm.com/available-rental-properties-denv>



Scan code  
for more  
property  
details





# 3663 Winter Sun Drive, Colorado Springs, CO 80925 – All Levels



GROSS INTERNAL AREA  
FLOOR 1: 1071 sq. ft. FLOOR 2: 1477 sq. ft.  
EXCLUDED AREAS: GARAGE: 361 sq. ft.  
PORCH: 290 sq. ft.  
TOTAL: 2548 sq. ft.  
MEASUREMENTS CALCULATED BY V1Photos.com ARE DEEMED HIGHLY RELIABLE BUT NOT GUARANTEED.



Disclaimer: Sizes and Dimensions are Approximate, Actual May Vary.



**Taylor Haas**  
303-665-7368  
taylorh@coloradorpm.com  
<https://www.coloradorpm.com/available-rental-properties-denver>



Scan code  
for more  
property  
details

