



15934 Butterwort Circle
Parker, CO 80134

MLS # 9074957



Single Family



3379 SQFT

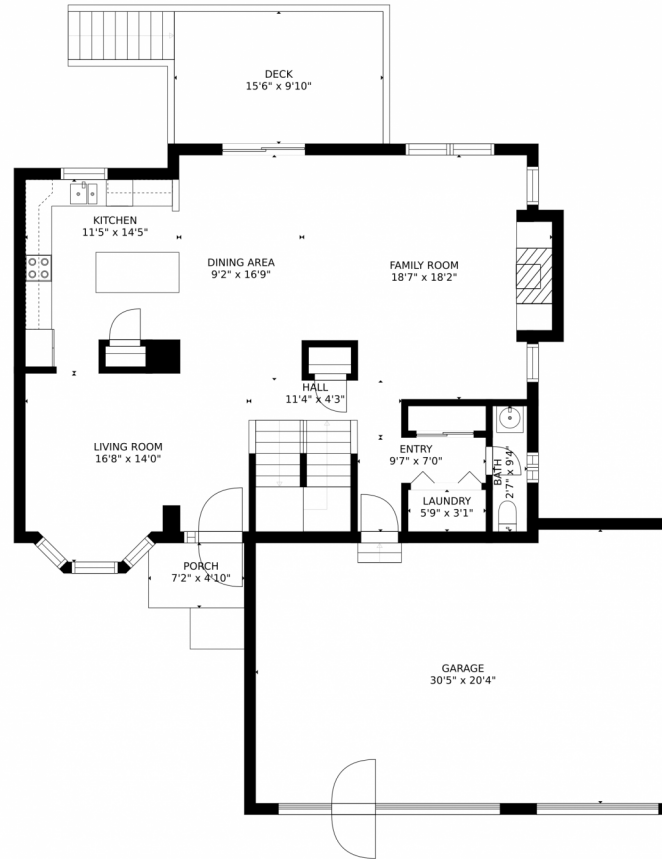


Deborah Rohleder
303-521-6302
mbredstar@aol.com



Scan code
for more
property
details

15934 Butterwort Circle, Parker, CO 80134 – Main



GROSS INTERNAL AREA
FLOOR 1: 947 sq. ft, FLOOR 2: 1053 sq. ft
FLOOR 3: 1093 sq. ft, EXCLUDED AREAS:
GARAGE: 598 sq. ft, DECK: 153 sq. ft
PORCH: 34 sq. ft
TOTAL: 3093 sq. ft

MEASUREMENTS CALCULATED BY V1Photos.COM ARE DEEMED HIGHLY RELIABLE BUT NOT GUARANTEED.

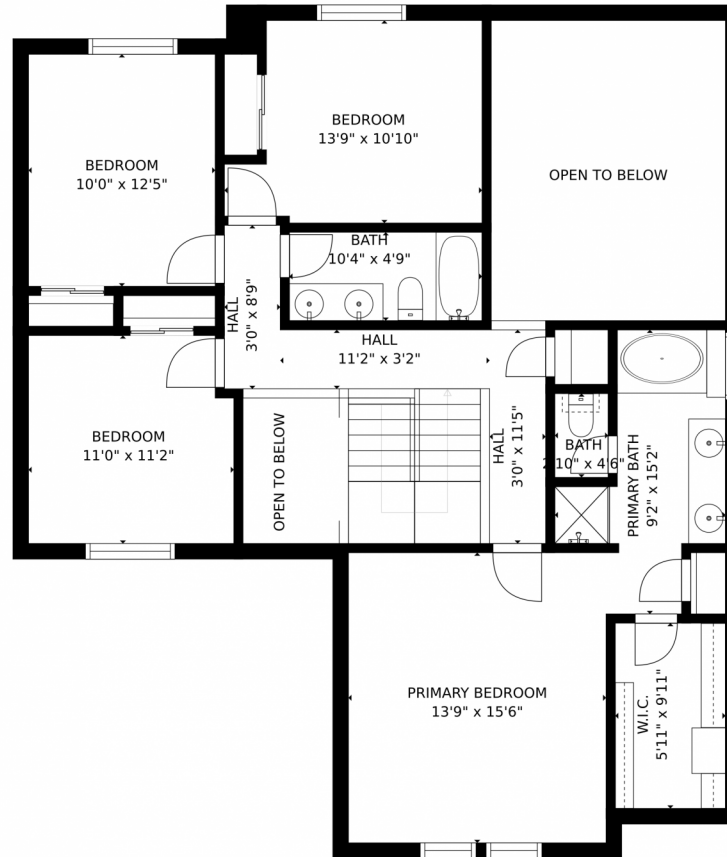


Disclaimer: Sizes and Dimensions are Approximate, Actual May Vary.

Deborah Rohleder
303-521-6302
mbredstar@aol.com



15934 Butterwort Circle, Parker, CO 80134 – 2nd Level



GROSS INTERNAL AREA
FLOOR 1: 947 sq. ft., FLOOR 2: 1053 sq. ft.
FLOOR 3: 1093 sq. ft., EXCLUDED AREAS:
GARAGE: 598 sq. ft., DECK: 153 sq. ft.
PORCH: 34 sq. ft.
TOTAL: 3093 sq. ft.
MEASUREMENTS CALCULATED BY V1Photos.COM ARE DEEMED HIGHLY RELIABLE BUT NOT GUARANTEED.

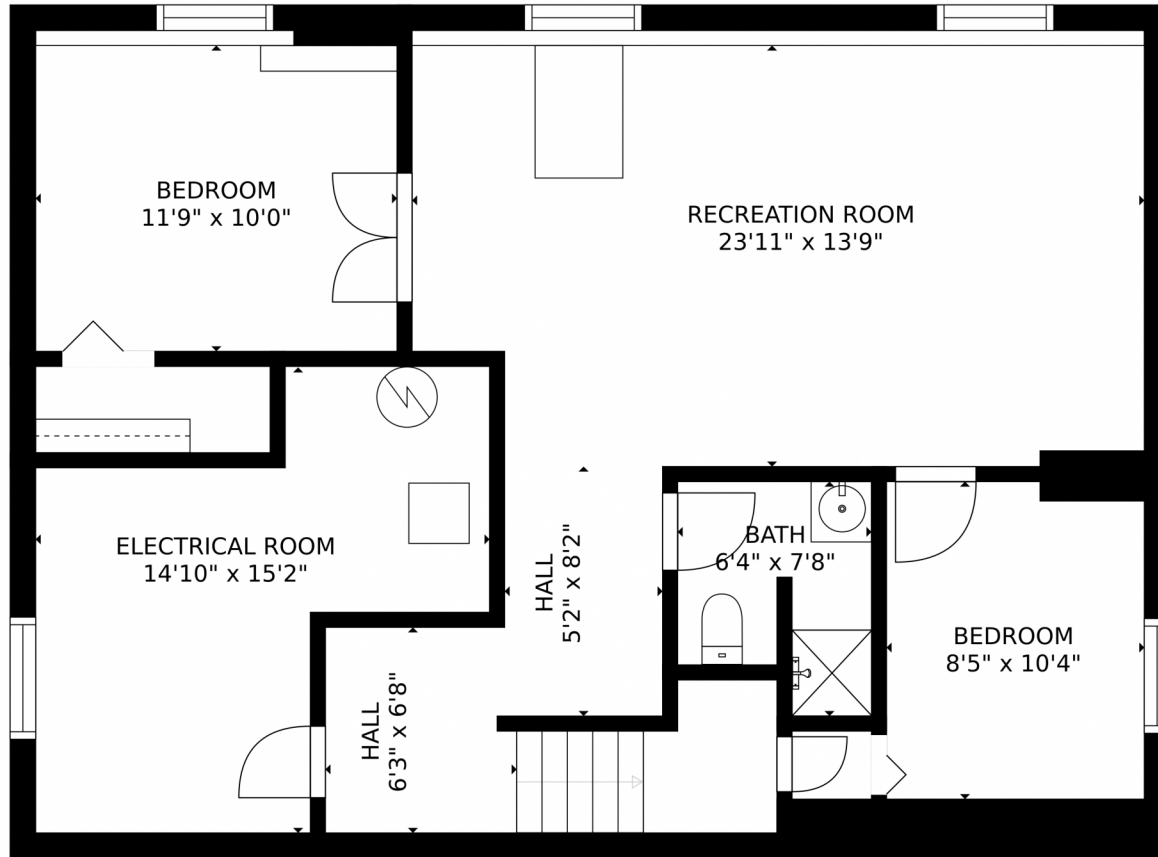


Disclaimer: Sizes and Dimensions are Approximate, Actual May Vary.

Deborah Rohleder
303-521-6302
mbredstar@aol.com



15934 Butterwort Circle, Parker, CO 80134 – Lower Level



GROSS INTERNAL AREA
FLOOR 1: 947 sq. ft., FLOOR 2: 1053 sq. ft.
FLOOR 3: 1093 sq. ft., EXCLUDED AREAS:
GARAGE: 598 sq. ft., DECK: 153 sq. ft.
PORCH: 34 sq. ft.
TOTAL: 3093 sq. ft.

MEASUREMENTS CALCULATED BY V1Photos.COM ARE DEEMED HIGHLY RELIABLE BUT NOT GUARANTEED.



Disclaimer: Sizes and Dimensions are Approximate, Actual May Vary.

Deborah Rohleder
303-521-6302
mbredstar@aol.com



15934 Butterwort Circle, Parker, CO 80134 – All Levels



GROSS INTERNAL AREA
 FLOOR 1: 947 sq. ft, FLOOR 2: 1053 sq. ft
 FLOOR 3: 1093 sq. ft, EXCLUDED AREAS:
 GARAGE: 598 sq. ft, DECK: 153 sq. ft
 PORCH: 34 sq. ft
 TOTAL: 3093 sq. ft

MEASUREMENTS CALCULATED BY V1Photos.COM ARE DEEMED HIGHLY RELIABLE BUT NOT GUARANTEED.



Disclaimer: Sizes and Dimensions are Approximate, Actual May Vary.

Deborah Rohleder
 303-521-6302
 mbredstar@aol.com

