




 Single Family

 1354 SQFT

 4 Beds

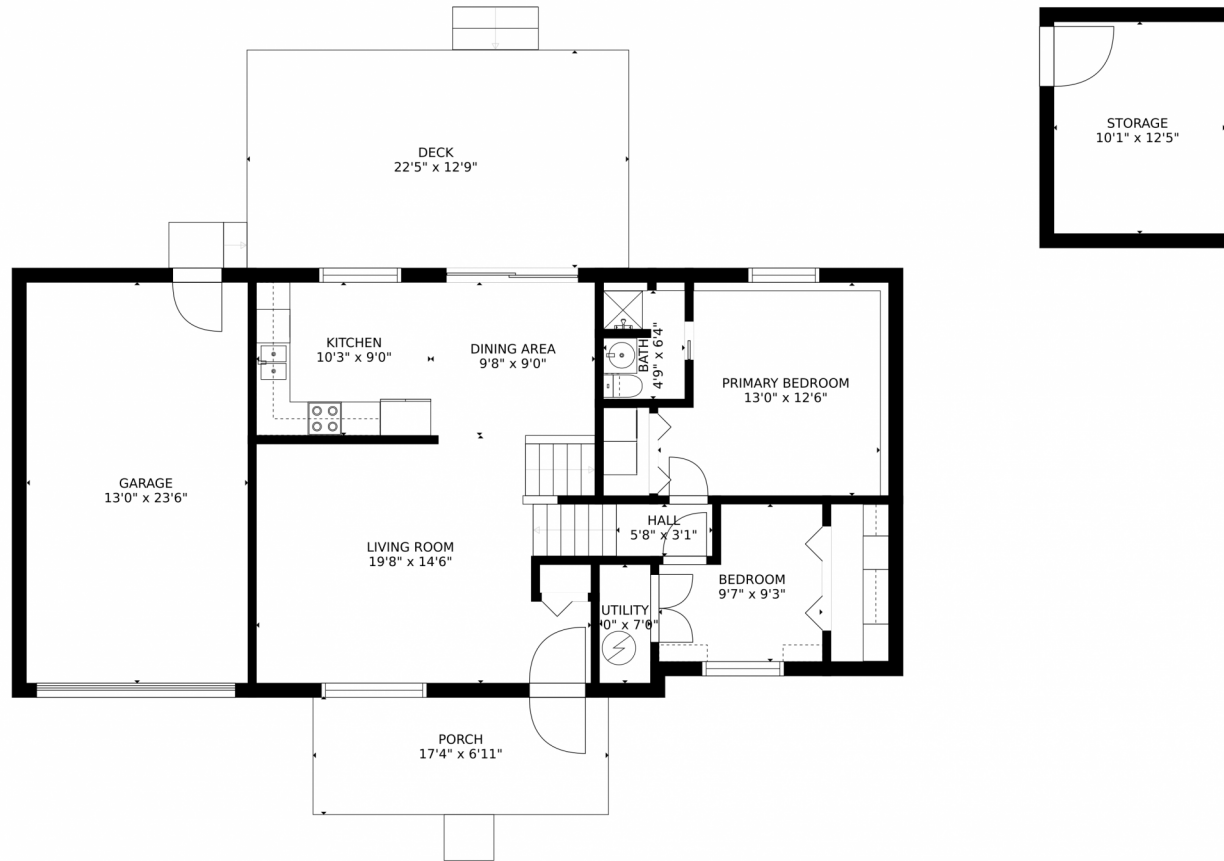
 2 Baths



Taylor Haas
303-665-7368
taylorh@coloradorpm.com
<https://www.coloradorpm.com/available-rental-properties-denver>



12854 East Florida Drive, Aurora, CO 80012 – Main Level



GROSS INTERNAL AREA
FLOOR 1: 980 sq. ft., FLOOR 2: 409 sq. ft.
EXCLUDED AREAS: , GARAGE: 306 sq. ft.
DECK: 287 sq. ft., PORCH: 120 sq. ft.
TOTAL: 1389 sq. ft.
MEASUREMENTS CALCULATED BY V1Photos.com ARE DEEMED HIGHLY RELIABLE BUT NOT GUARANTEED.



Disclaimer: Sizes and Dimensions are Approximate, Actual May Vary.

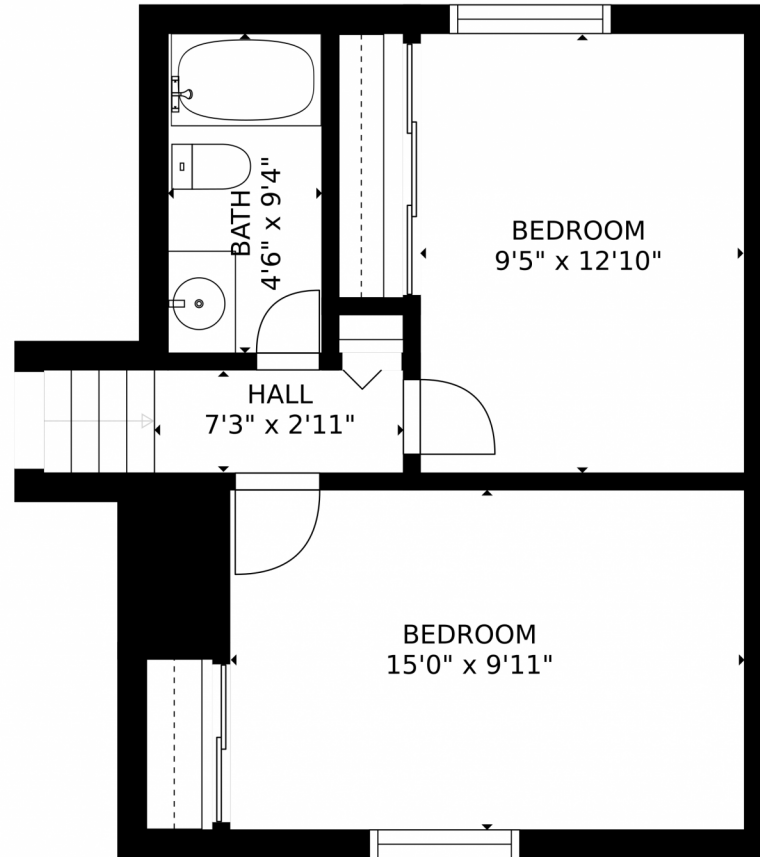


Taylor Haas
303-665-7368
taylorh@coloradorpm.com
<https://www.coloradorpm.com/available-rental-properties-denver>



Scan code
for more
property
details

12854 East Florida Drive, Aurora, CO 80012 – Upper Level



GROSS INTERNAL AREA
FLOOR 1: 980 sq. ft., FLOOR 2: 409 sq. ft.
EXCLUDED AREAS: , GARAGE: 306 sq. ft.
DECK: 287 sq. ft., PORCH: 120 sq. ft.
TOTAL: 1389 sq. ft.
MEASUREMENTS CALCULATED BY V1Photos.COM ARE DEEMED HIGHLY RELIABLE BUT NOT GUARANTEED.



Disclaimer: Sizes and Dimensions are Approximate, Actual May Vary.



Taylor Haas
303-665-7368
taylorh@coloradorpm.com
<https://www.coloradorpm.com/available-rental-properties-denver>



12854 East Florida Drive, Aurora, CO 80012 – All Levels



GROSS INTERNAL AREA
FLOOR 1: 980 sq. ft, FLOOR 2: 409 sq. ft
EXCLUDED AREAS: , GARAGE: 306 sq. ft
DECK: 287 sq. ft, PORCH: 120 sq. ft
TOTAL: 1389 sq. ft
MEASUREMENTS CALCULATED BY V1Photos.COM ARE DEEMED HIGHLY RELIABLE BUT NOT GUARANTEED.



Disclaimer: Sizes and Dimensions are Approximate, Actual May Vary.



Taylor Haas
303-665-7368
taylorh@coloradorpm.com
<https://www.coloradorpm.com/available-rental-properties-denver>



Scan code
for more
property
details