



295 Dahlia Drive
 Louisville, CO 80027
 COMMUNITY: Dutch Creek

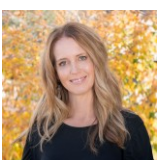
PRICE \$675,000



Single Family 1248 SQFT 3 Beds 2 Baths 2 Car

PROPERTY DETAILS

Located close to trails, Open Space, golf course, Community Park and Downtown Louisville this unique 2 story in Dutch Creek is nestled on a quiet street. This 3 bed/2 full bath home is ready for move in. Open the door to soaring vaulted ceilings, light and bright living room. Laminate flooring on the main level. Large main level bedroom with ample closet space with a full bathroom. Open galley kitchen with all appliances, bar space and separate dining room/family room. Open large sliding door to inviting backyard with brick patio, mature trees and professional landscaping perfect for relaxing summer time Colorado oasis. Upstairs features 2 bedrooms PLUS study/office or flex room. Laundry room with Washer and Dryer on main level. Attached 2 car garage. Great investment in Louisville!



Terri Ellerington

303-929-8116

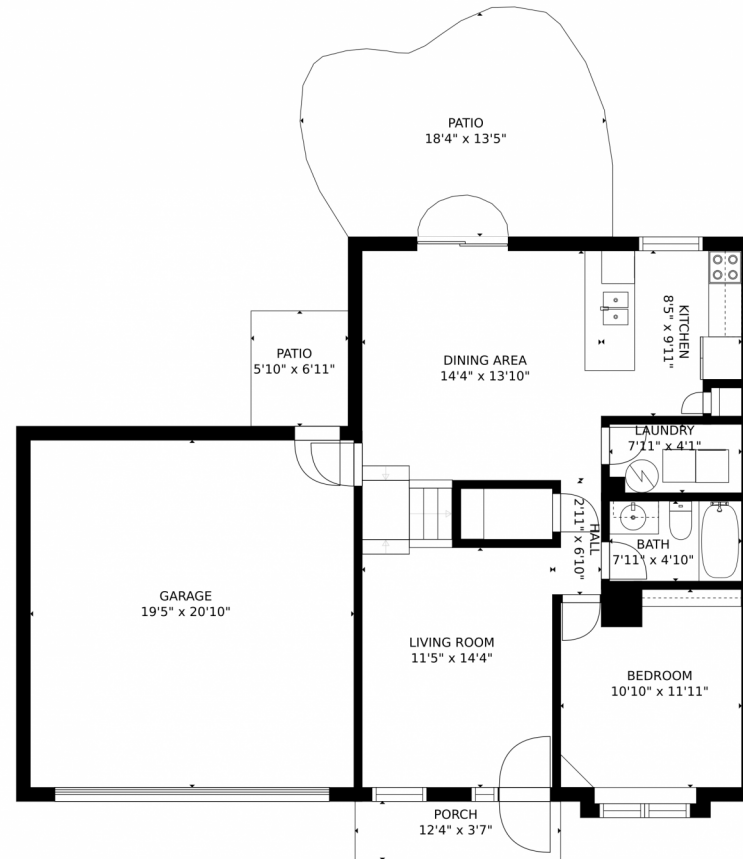
terri@elevated-team.com

<https://www.remax.com/real-estate-agents/terri-ellerington-louisville-co/10205130>

Scan code
for more
property
details



295 Dahlia Drive, Louisville, CO 80027 – Main Level



GROSS INTERNAL AREA
FLOOR 1: 739 sq. ft, FLOOR 2: 471 sq. ft
EXCLUDED AREAS: , GARAGE: 405 sq. ft
PATIO: 252 sq. ft, PORCH: 44 sq. ft
TOTAL: 1211 sq. ft
MEASUREMENTS CALCULATED BY V1Photos.com ARE DEEMED HIGHLY RELIABLE BUT NOT GUARANTEED.



Disclaimer: Sizes and Dimensions are Approximate, Actual May Vary.



Terri Ellerington

303-929-8116

terri@elevated-team.com

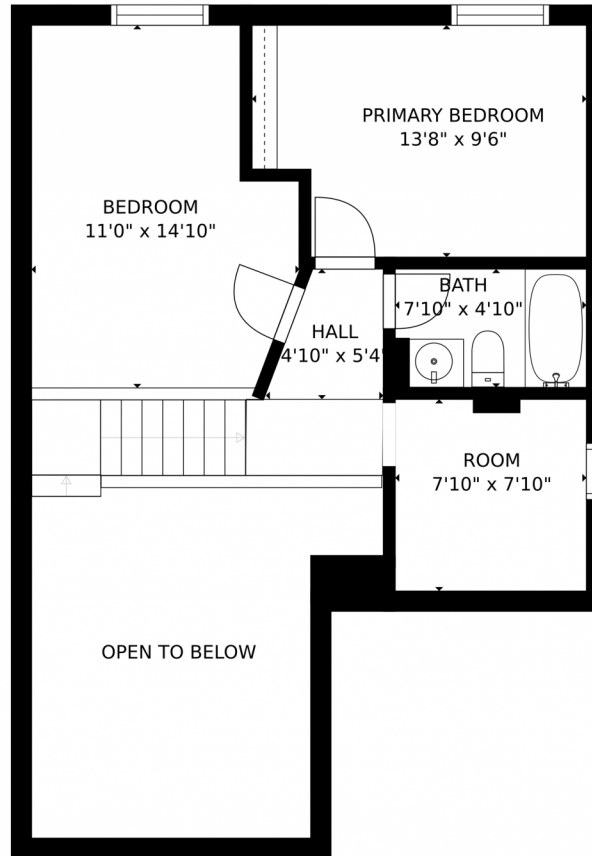
<https://www.remax.com/real-estate-agents/terri-ellerington-louisville-co/102051301>



Scan code
for more
property
details



295 Dahlia Drive, Louisville, CO 80027 – Upper Level



GROSS INTERNAL AREA
FLOOR 1: 739 sq. ft., FLOOR 2: 471 sq. ft.
EXCLUDED AREAS: , GARAGE: 405 sq. ft.
PATIO: 252 sq. ft., PORCH: 44 sq. ft.
TOTAL: 1211 sq. ft.
MEASUREMENTS CALCULATED BY V1Photos.COM ARE DEEMED HIGHLY RELIABLE BUT NOT GUARANTEED.



Disclaimer: Sizes and Dimensions are Approximate, Actual May Vary.



Terri Ellerington

303-929-8116

terri@elevated-team.com

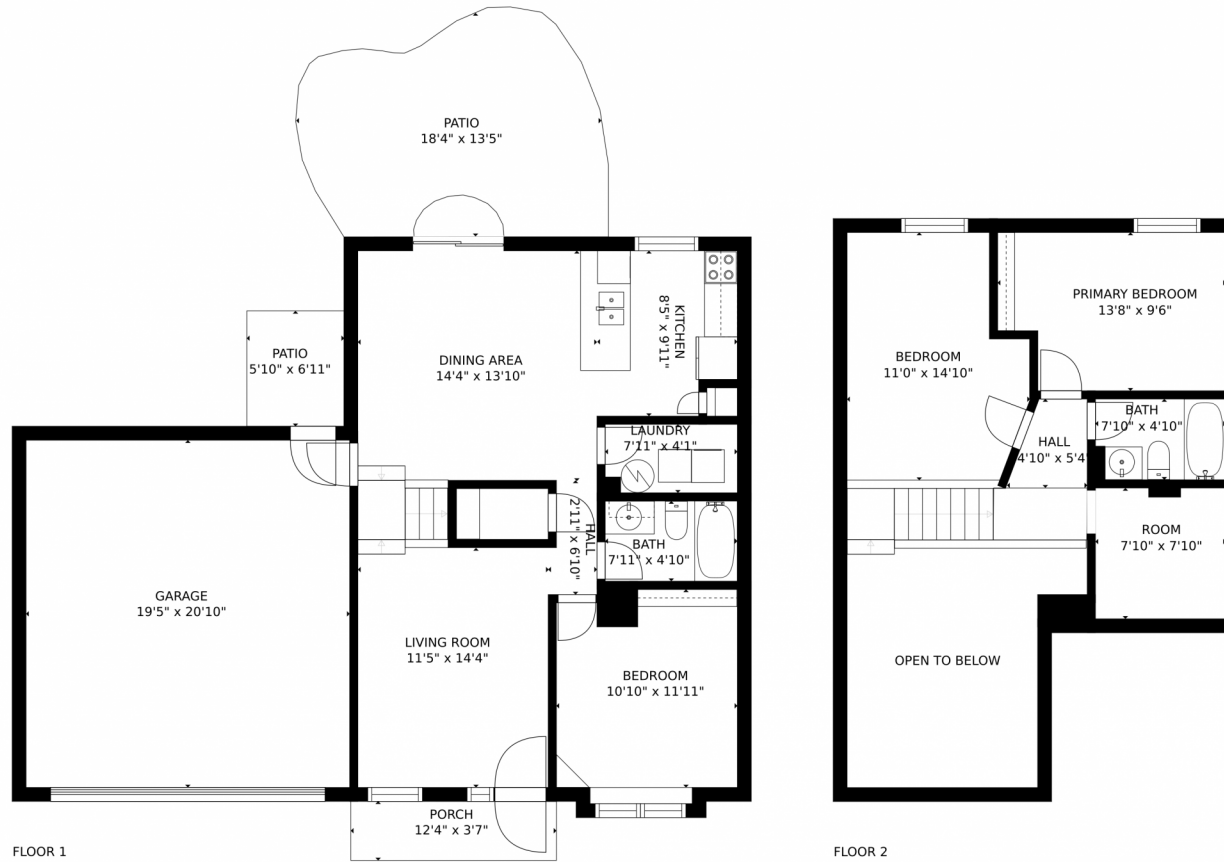
<https://www.remax.com/real-estate-agents/terri-ellerington-louisville-co/102051301>



Scan code
for more
property
details



295 Dahlia Drive, Louisville, CO 80027 – All Levels



FLOOR 1

FLOOR 2

GROSS INTERNAL AREA
FLOOR 1: 739 sq. ft. FLOOR 2: 471 sq. ft
EXCLUDED AREAS: , GARAGE: 405 sq. ft
PATIO: 252 sq. ft, PORCH: 44 sq. ft
TOTAL: 1211 sq. ft
MEASUREMENTS CALCULATED BY V1Photos.com ARE DEEMED HIGHLY RELIABLE BUT NOT GUARANTEED.

Disclaimer: Sizes and Dimensions are Approximate, Actual May Vary.



Terri Ellerington

303-929-8116

terri@elevated-team.com

<https://www.remax.com/real-estate-agents/terri-ellerington-louisville-co/102051301>



Scan code
for more
property
details

