



Single Family



2883 SQFT



4 Beds



2/1 Baths



3 Car



4.5 Acre

PROPERTY DETAILS

Welcome to a little slice of peaceful paradise. This serene and private 4.5 acres offers beautiful views, aspen groves, gentle meadow and bountiful wildlife sightings - a tranquil and lovely respite from the world. The updated home brings the outside in with large windows throughout, taking advantage of the beautiful scenery just outside. Step inside to the vaulted living room with floor to ceiling windows & enjoy the gorgeous new wood flooring has been added throughout most of the home. The wood burning stove adds warmth & ambiance throughout the house. The open kitchen has brand new LG appliances & great flow, with large walk in pantry, center island & lots of cabinetry & counter space. The laundry is a few steps away. Dine with a wall of windows around you overlooking the expansive composite deck. With abundant sunshine, you will use this wonderful deck all year around. Enjoy your morning coffee on the deck & watch the sunrise or or relax in the shade of the aspen trees on a warm afternoon and listen to the many birds that frequent here. The layout in the home is wonderful too – 2 main floor bedrooms & a small office space provide multiple options. Work from home with high speed internet. Upstairs find a primary suite & additional bedroom. The primary suite opens via French doors to a very usable loft area with a private deck. The primary bath is spacious with dual sinks, and Corian counters. Plenty of linen & storage closets too. The 3-car garage is terrific,



Pandora & John Erlandson

303-888-6298

pandora@pandorajohnproperties.com

<https://www.pandorajohnproperties.com>

Scan code
for more
property
details



with extra space for workshop area & additional basement storage. And, there is a brand new asphalt driveway with flat paved parking area in front of the garage. There is also a dog run shaded by aspen trees. The home and property feels like your own very special sanctuary, and is zoned A-2, so bring your animals. Located just 9 minutes from 2 grocery stores, coffee shop & amenities. Serene Colorado living is yours on this gorgeous 4.5 acres! More photos at www.20174SilverRanchRoad.info



Pandora & John Erlandson

303-888-6298

pandora@pandorajohnproperties.com

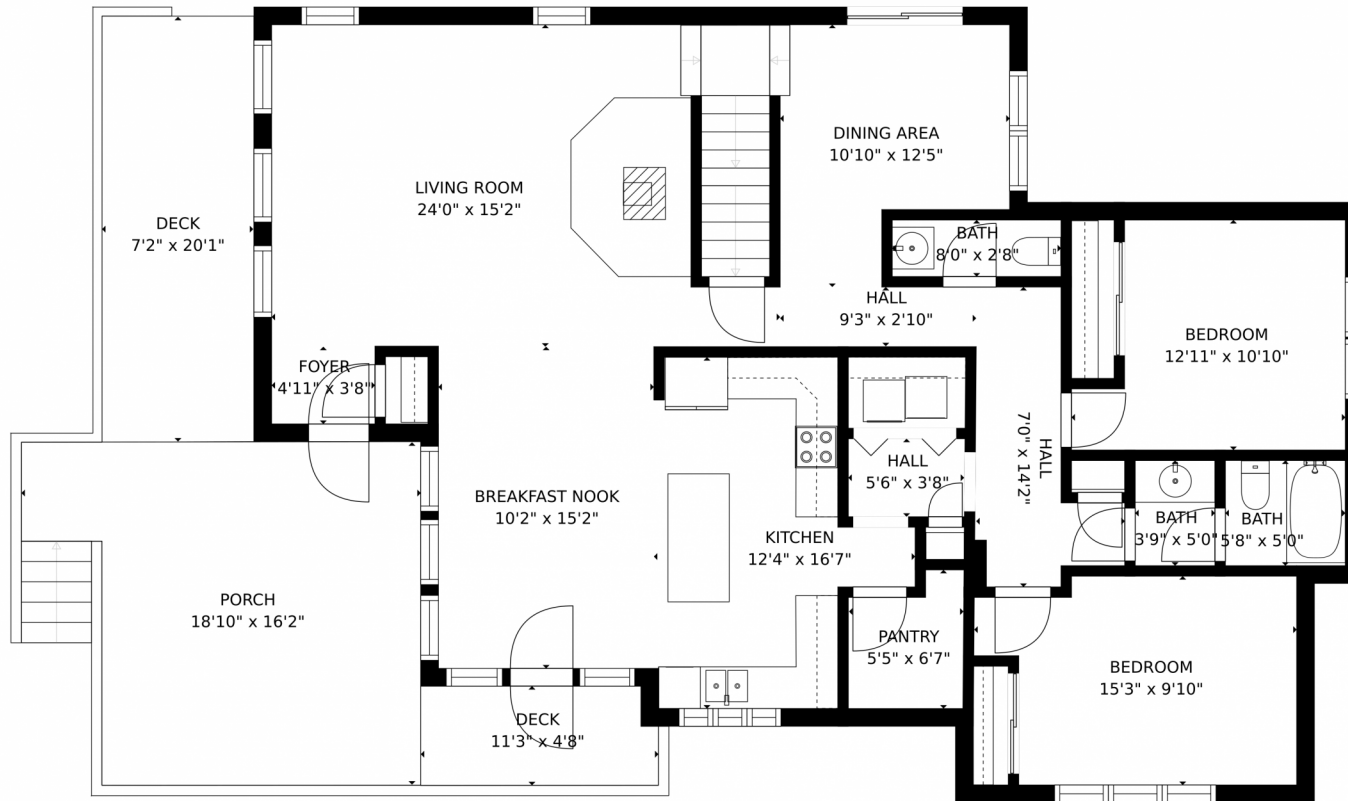
<https://www.pandorajohnproperties.com>



Scan code
for more
property
details



20174 Silver Ranch Road, Conifer, CO 80433 – Main Level



GROSS INTERNAL AREA
FLOOR 1: 429 sq. ft., FLOOR 2: 1404 sq. ft.
FLOOR 3: 753 sq. ft., EXCLUDED AREAS:
GARAGE: 847 sq. ft., PATIO: 150 sq. ft.
DECK: 195 sq. ft., PORCH: 262 sq. ft.
BALCONY: 43 sq. ft.
TOTAL: 2586 sq. ft.

MEASUREMENTS CALCULATED BY V1Photos.com ARE DEEMED HIGHLY RELIABLE BUT NOT GUARANTEED.



Disclaimer: Sizes and Dimensions are Approximate, Actual May Vary.



Pandora & John Erlandson

303-888-6298

pandora@pandorajohnproperties.com

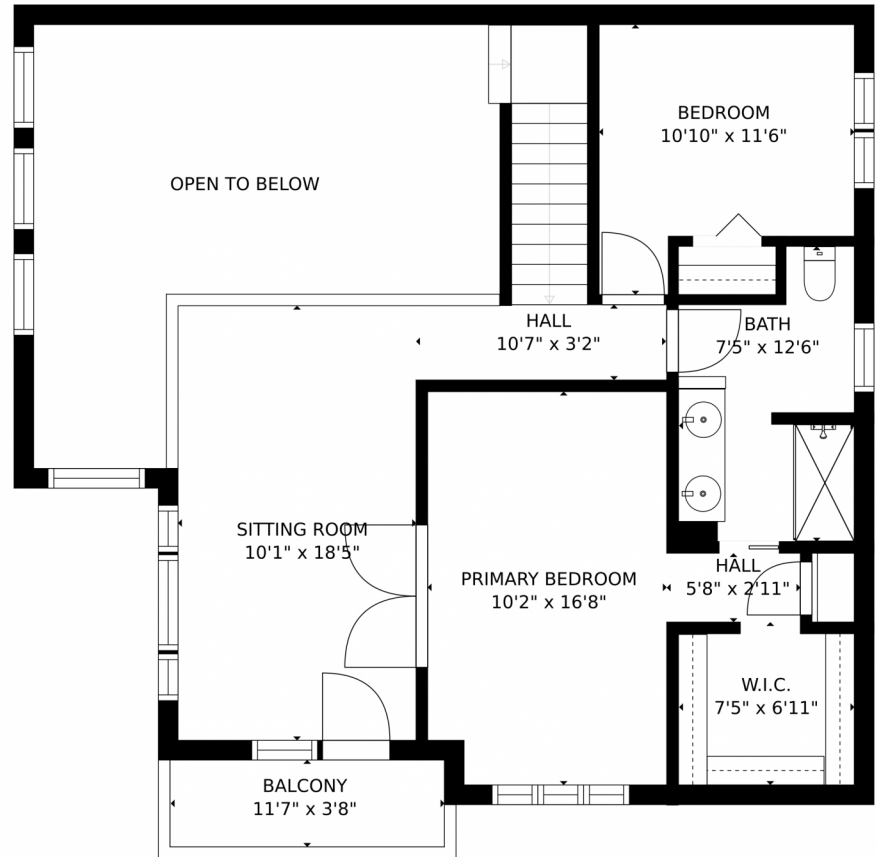
<https://www.pandorajohnproperties.com>



Scan code
for more
property
details



20174 Silver Ranch Road, Conifer, CO 80433 – Upper Level



GROSS INTERNAL AREA
FLOOR 1: 429 sq. ft, FLOOR 2: 1404 sq. ft
FLOOR 3: 753 sq. ft, EXCLUDED AREAS:
GARAGE: 847 sq. ft, PATIO: 150 sq. ft
DECK: 195 sq. ft, PORCH: 262 sq. ft
BALCONY: 43 sq. ft
TOTAL: 2586 sq. ft
MEASUREMENTS CALCULATED BY V1Photos.com ARE DEEMED HIGHLY RELIABLE BUT NOT GUARANTEED.



Disclaimer: Sizes and Dimensions are Approximate, Actual May Vary.



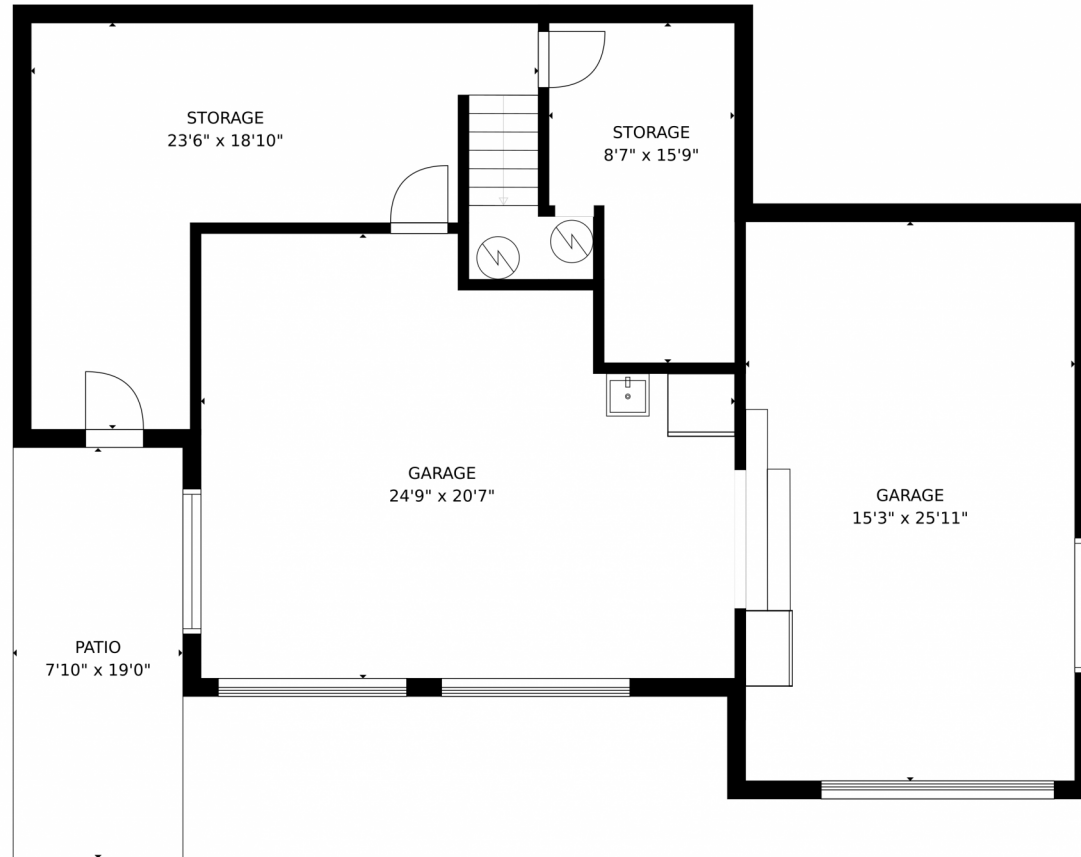
Pandora & John Erlandson
303-888-6298
pandora@pandorajohnproperties.com
<https://www.pandorajohnproperties.com>



Scan code for more property details



20174 Silver Ranch Road, Conifer, CO 80433 – Lower Level



GROSS INTERNAL AREA
FLOOR 1: 429 sq. ft., FLOOR 2: 1404 sq. ft.
FLOOR 3: 753 sq. ft., EXCLUDED AREAS:
GARAGE: 847 sq. ft., PATIO: 150 sq. ft.
DECK: 195 sq. ft., PORCH: 262 sq. ft.
BALCONY: 43 sq. ft.
TOTAL: 2586 sq. ft.

MEASUREMENTS CALCULATED BY V1Photos.com ARE DEEMED HIGHLY RELIABLE BUT NOT GUARANTEED.



Disclaimer: Sizes and Dimensions are Approximate, Actual May Vary.



Pandora & John Erlandson

303-888-6298

pandora@pandorajohnproperties.com

<https://www.pandorajohnproperties.com>



Scan code
for more
property
details



20174 Silver Ranch Road, Conifer, CO 80433 – All Levels



GROSS INTERNAL AREA
 FLOOR 1: 429 sq. ft, FLOOR 2: 1404 sq. ft
 FLOOR 3: 753 sq. ft, EXCLUDED AREAS:
 GARAGE: 847 sq. ft, PATIO: 150 sq. ft
 DECK: 195 sq. ft, PORCH: 262 sq. ft
 BALCONY: 43 sq. ft
 TOTAL: 2586 sq. ft

MEASUREMENTS CALCULATED BY V1Photos.com ARE DEEMED HIGHLY RELIABLE BUT NOT GUARANTEED.



Disclaimer: Sizes and Dimensions are Approximate, Actual May Vary.



Pandora & John Erlandson
 303-888-6298
 pandora@pandorajohnproperties.com
<https://www.pandorajohnproperties.com>



Scan code
 for more
 property
 details

