



Single Family



3427 SQFT



5 Beds



3/2 Baths



2 Car



0.08 Acre

PROPERTY DETAILS

Luxuriously upgraded Parkwood Painted Lady * Sunny, South-facing, 3-story with finished basement, including full guest suite that can be used as a secondary Primary Suite. Thoughtfully detailed character throughout with custom millwork, designer finishes, recessed lighting & open floor plan * Welcoming covered front porch * Luxurious chef's kitchen boasting high-end finishes, top-of-the-line stainless appliances including 36-inch Thermador Pro Grand Professional Series range, 12-foot kitchen island with upgraded quartz, custom marble (Thasos and Bianca Carrera) backsplash w/glass grout, upgraded brass fixtures, coffee-bar station w/ storage plus huge pantry! * Large dining room w/ dry-bar, built-in beer and wine fridges, hand-painted Carrera marble tiles & crystal/brass chandelier * Light-filled living room has gas fireplace with shiplap accent wall and oversized glass French doors that open to a terrific indoor/outdoor deck & pergola w/mountain & open space views * Second floor spacious primary w/ incredible en-suite bath featuring modern freestanding tub, frameless shower, dual sinks, marble flooring & huge walk-in closet * Two additional large bedrooms, full bath and laundry room complete second level * 3rd floor features 5th bedroom (currently being used as 2nd office) w/ mtn view plus an additional office (w/city view), 1/2 bath and a versatile flex space perfect for playroom or TV/lounge area * Lower-level 2nd primary suite is ideal for teens, guests or nanny *



Suellen Mack
303-378-6310
mack12@comcast.net



Scan code
for more
property
details



Convenient mudroom adjacent to the attached, oversized garage w/ tons of storage & work area * Private elevated & custom wrought iron fenced front yard incl sprinkler system * Energy Star Certified Home features: double pane low-e windows, HE gas furnace, exterior wall framing with 2x6 to maximize insulation, tankless water heater, Indoor AirPlus approved, low VOC paints throughout interior and exterior, passive radon system, LED bulbs and Panasonic Whisper Green Fan, low flow toilets, two zone heating and cooling. Quick access to DIA & Anschutz Medical Campus & just steps away from trails, basketball courts, parks, swimming pools, skateboard park, The Rocky Mountain Arsenal w/ its numerous trails * Top-rated schools, great shopping & tons of restaurants.



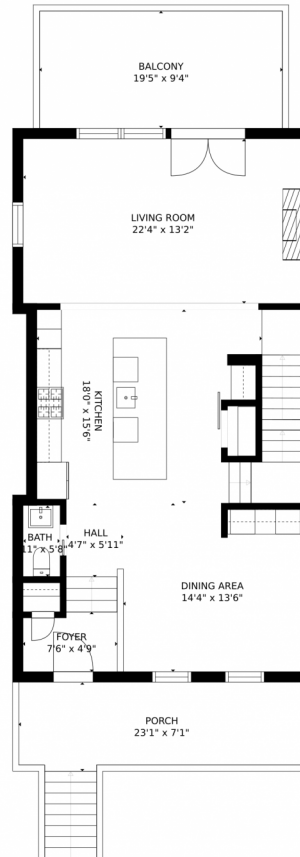
Suellen Mack
303-378-6310
mack12@comcast.net



Scan code
for more
property
details



9681 East 59th Drive, Denver, CO 80238 – 1st Floor



GROSS INTERNAL AREA
FLOOR 1: 451 sq. ft. FLOOR 2: 937 sq. ft.
FLOOR 3: 965 sq. ft. FLOOR 4: 669 sq. ft.
EXCLUDED AREAS: , GARAGE: 563 sq. ft.
BALCONY: 182 sq. ft. PORCH: 155 sq. ft.
TOTAL: 3023 sq. ft.

MEASUREMENTS CALCULATED BY V1Photos.COM ARE DEEMED HIGHLY RELIABLE BUT NOT GUARANTEED.

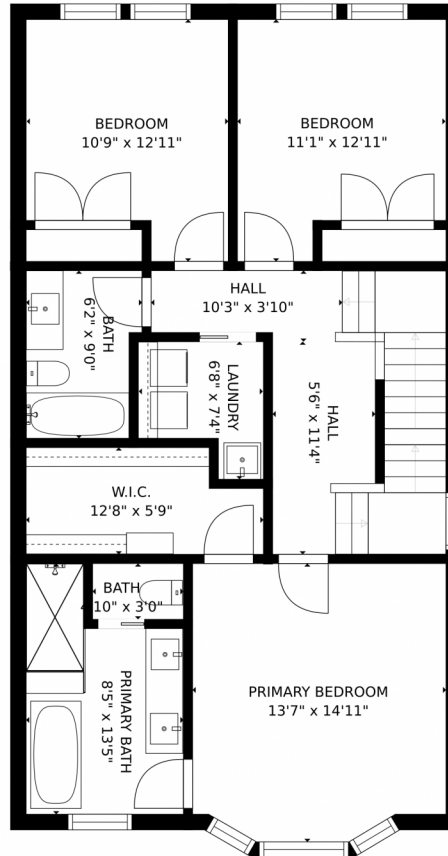


Disclaimer: Sizes and Dimensions are Approximate, Actual May Vary.



Suellen Mack
303-378-6310
mack12@comcast.net





GROSS INTERNAL AREA
FLOOR 1: 451 sq. ft. FLOOR 2: 937 sq. ft.
FLOOR 3: 965 sq. ft. FLOOR 4: 669 sq. ft.
EXCLUDED AREAS: GARAGE: 563 sq. ft.
BALCONY: 182 sq. ft. PORCH: 155 sq. ft.
TOTAL: 3023 sq. ft.
MEASUREMENTS CALCULATED BY V1Photos.COM ARE DEEMED HIGHLY RELIABLE BUT NOT GUARANTEED.

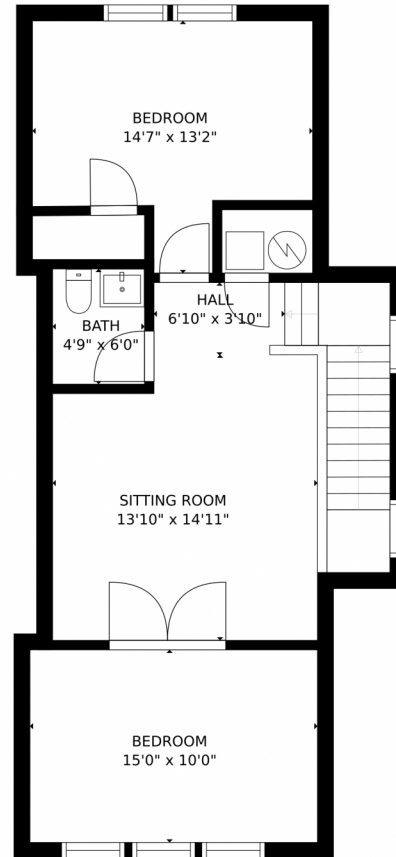


Disclaimer: Sizes and Dimensions are Approximate, Actual May Vary.



Suellen Mack
303-378-6310
mack12@comcast.net





GROSS INTERNAL AREA
FLOOR 1: 451 sq. ft. FLOOR 2: 937 sq. ft.
FLOOR 3: 965 sq. ft. FLOOR 4: 669 sq. ft.
EXCLUDED AREAS: GARAGE: 563 sq. ft.
BALCONY: 182 sq. ft. PORCH: 155 sq. ft.
TOTAL: 3023 sq. ft.

MEASUREMENTS CALCULATED BY V1Photos.COM ARE DEEMED HIGHLY RELIABLE BUT NOT GUARANTEED.



Disclaimer: Sizes and Dimensions are Approximate, Actual May Vary.

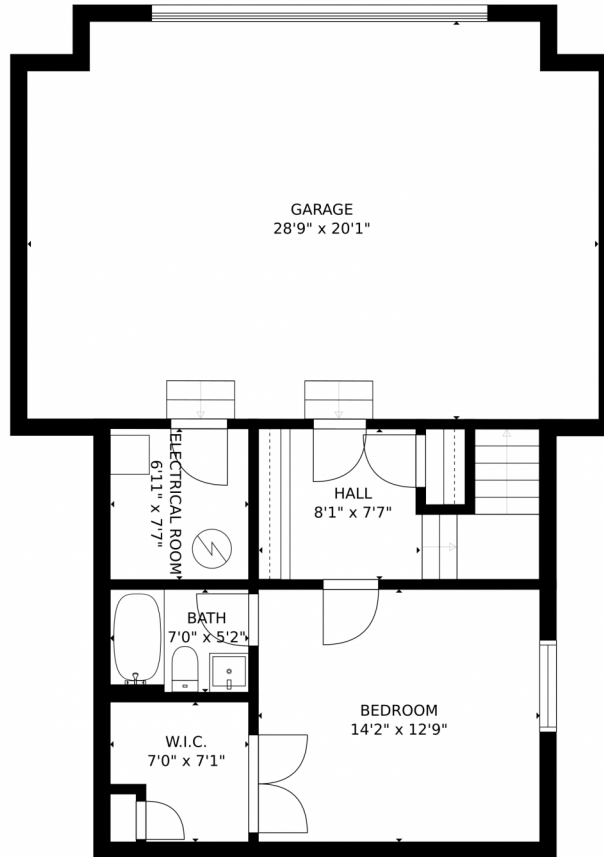


Suellen Mack
303-378-6310
mack12@comcast.net



Scan code
for more
property
details





GROSS INTERNAL AREA
FLOOR 1: 451 sq. ft. FLOOR 2: 937 sq. ft.
FLOOR 3: 965 sq. ft. FLOOR 4: 669 sq. ft.
EXCLUDED AREAS: , GARAGE: 563 sq. ft.
BALCONY: 182 sq. ft. PORCH: 155 sq. ft.
TOTAL: 3023 sq. ft.
MEASUREMENTS CALCULATED BY V1Photos.com ARE DEEMED HIGHLY RELIABLE BUT NOT GUARANTEED.



Disclaimer: Sizes and Dimensions are Approximate, Actual May Vary.



Suellen Mack
303-378-6310
mack12@comcast.net



9681 East 59th Drive, Denver, CO 80238 – All Floors



GROSS INTERNAL AREA
 FLOOR 1: 451 sq. ft. FLOOR 2: 937 sq. ft.
 FLOOR 3: 965 sq. ft. FLOOR 4: 669 sq. ft.
 EXCLUDED AREAS: GARAGE: 563 sq. ft.
 BALCONY: 182 sq. ft. PORCH: 155 sq. ft.
 TOTAL: 3023 sq. ft.
 MEASUREMENTS CALCULATED BY V1Photos.COM ARE DEEMED HIGHLY RELIABLE BUT NOT GUARANTEED.



Disclaimer: Sizes and Dimensions are Approximate, Actual May Vary.



Suellen Mack
 303-378-6310
 mack12@comcast.net



Scan code
 for more
 property
 details

