




639 Skyline Avenue
Colorado Springs, CO 80905



 Single Family

 1846 SQFT

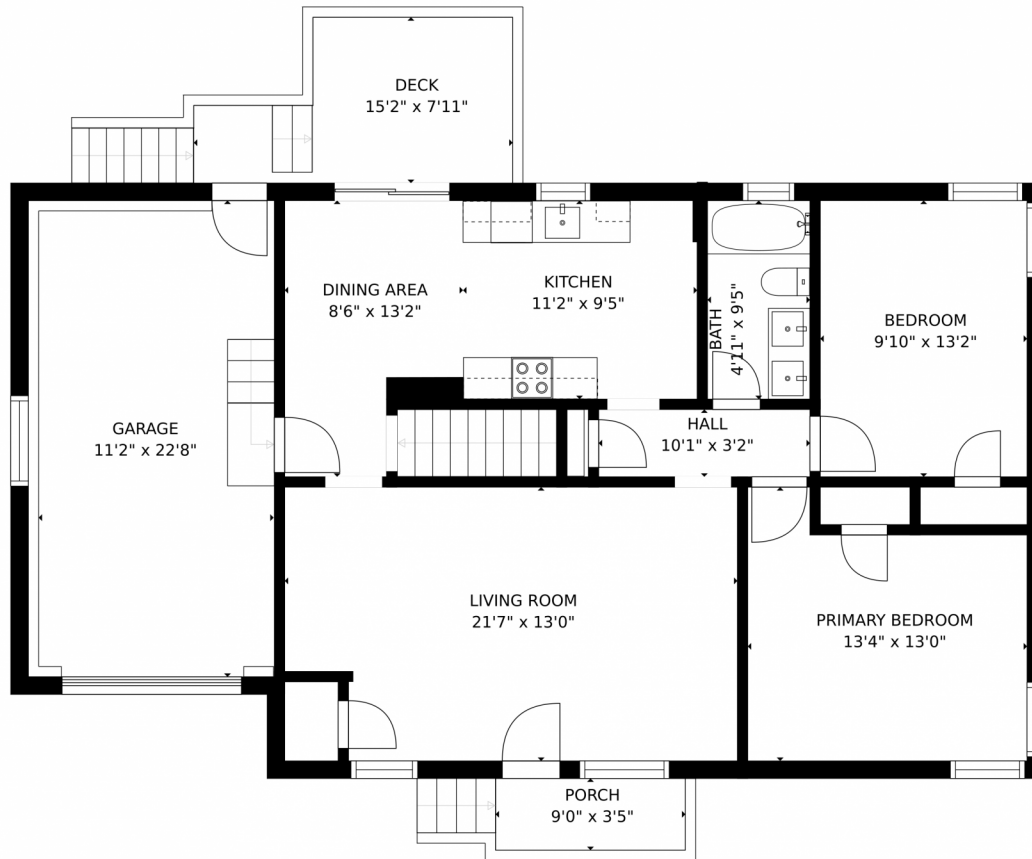
 4 Beds

 2 Baths

Terry Moss
719-466-1299
terry.m5@icloud.com



639 Skyline Avenue, Colorado Springs, CO 80905 – Main Level



GROSS INTERNAL AREA
FLOOR 1: 867 sq. ft. FLOOR 2: 942 sq. ft.
EXCLUDED AREAS: , PORCH: 44 sq. ft.
GARAGE: 265 sq. ft. DECK: 96 sq. ft.
TOTAL: 1810 sq. ft.

MEASUREMENTS CALCULATED BY V1Photos.COM ARE DEEMED HIGHLY RELIABLE BUT NOT GUARANTEED.



Disclaimer: Sizes and Dimensions are Approximate, Actual May Vary.

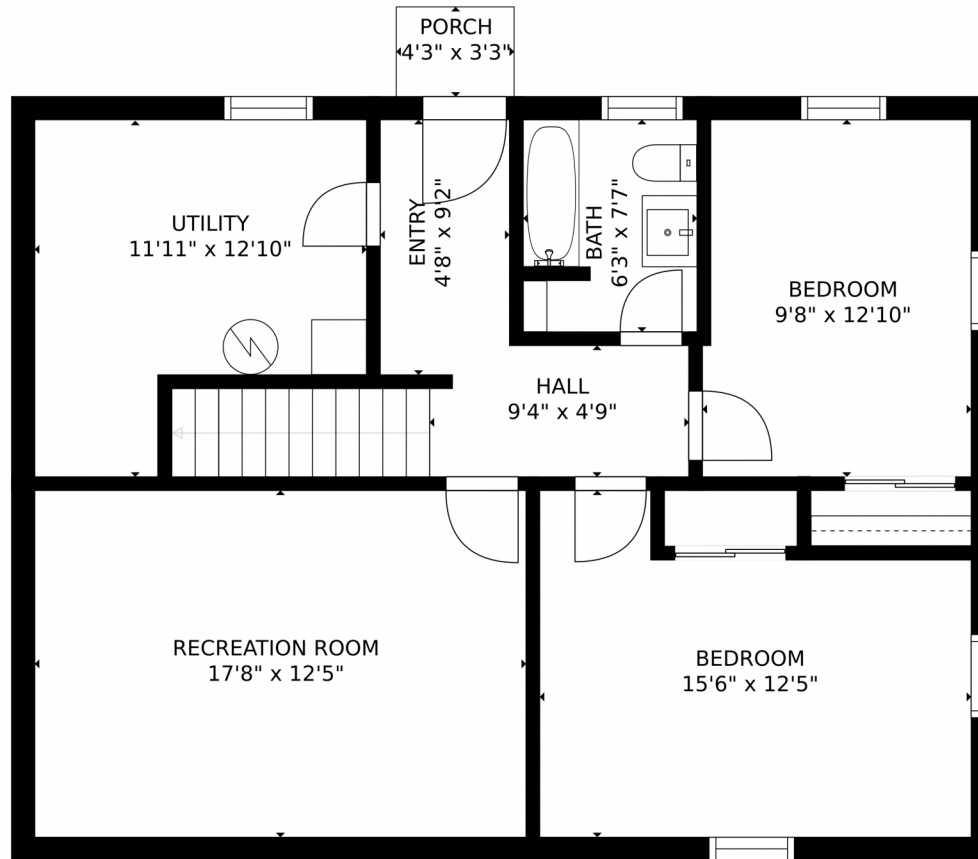
Terry Moss
719-466-1299
terry.m5@icloud.com



Scan code
for more
property
details



639 Skyline Avenue, Colorado Springs, CO 80905 – Lower Level



GROSS INTERNAL AREA
FLOOR 1: 867 sq. ft. FLOOR 2: 942 sq. ft.
EXCLUDED AREAS: , PORCH: 44 sq. ft.
GARAGE: 265 sq. ft. DECK: 96 sq. ft.
TOTAL: 1810 sq. ft.
MEASUREMENTS CALCULATED BY V1Photos.COM ARE DEEMED HIGHLY RELIABLE BUT NOT GUARANTEED.

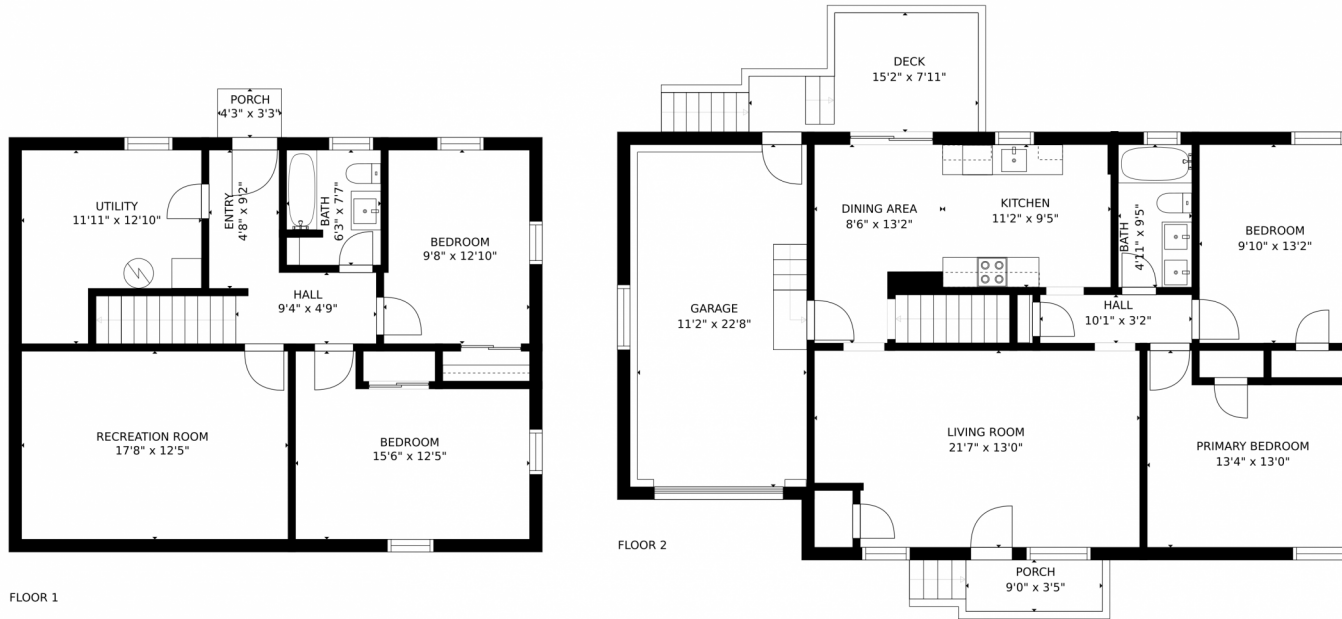


Disclaimer: Sizes and Dimensions are Approximate, Actual May Vary.

Terry Moss
719-466-1299
terry.m5@icloud.com



639 Skyline Avenue, Colorado Springs, CO 80905 – All Levels



FLOOR 1

FLOOR 2

GROSS INTERNAL AREA
FLOOR 1: 867 sq. ft, FLOOR 2: 942 sq. ft
EXCLUDED AREAS: , PORCH: 44 sq. ft
GARAGE: 265 sq. ft, DECK: 96 sq. ft
TOTAL: 1810 sq. ft

MEASUREMENTS CALCULATED BY V1Photos.COM ARE DEEMED HIGHLY RELIABLE BUT NOT GUARANTEED.



Disclaimer: Sizes and Dimensions are Approximate, Actual May Vary.

Terry Moss
719-466-1299
terry.m5@icloud.com

