


8379 Vallejo Street
Denver, CO 80221
COMMUNITY: Sherrrelwood Estates




 Single Family

 1850 SQFT

 5 Beds

 2 Baths

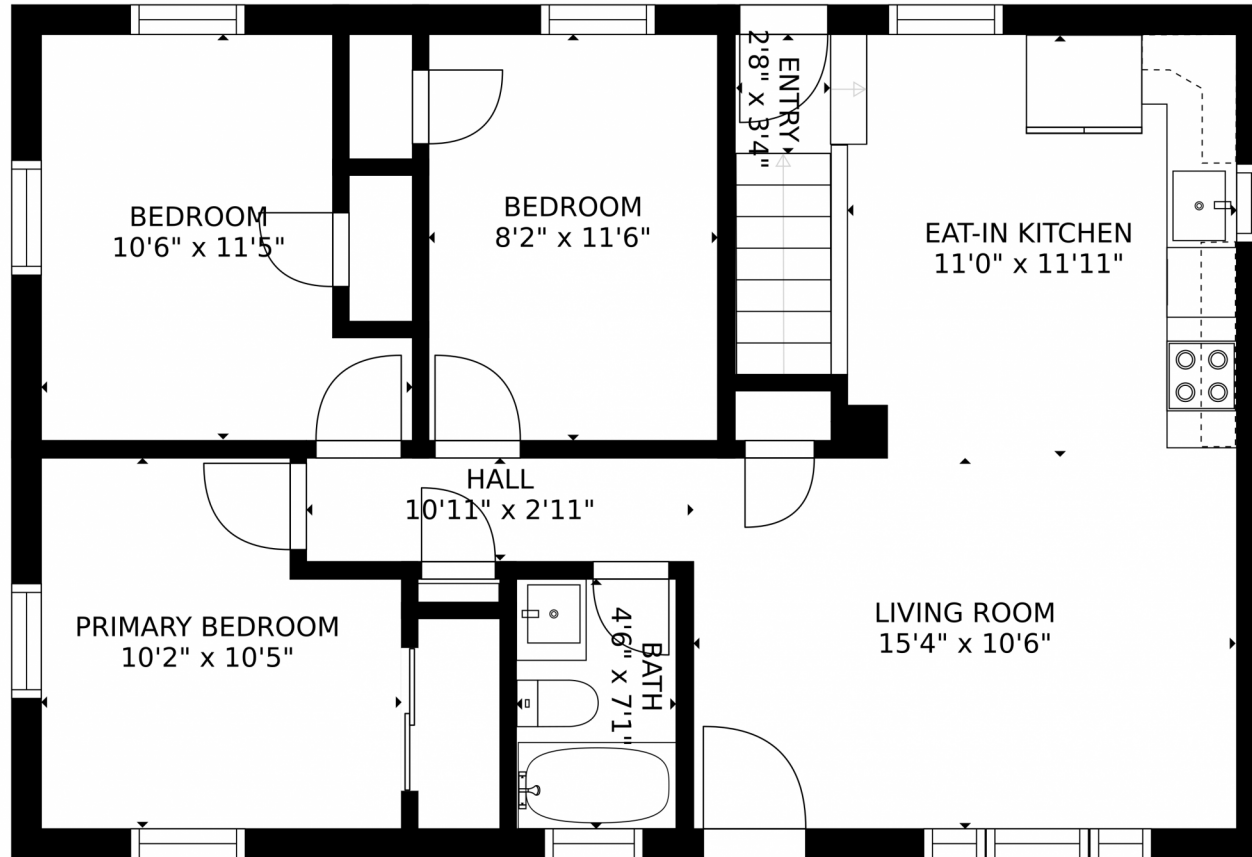
 0.18 Acre



Kifle Leulseged
720-891-6979
kleulseged@gmail.com



8379 Vallejo Street, Denver, CO 80221 – Main Level



GROSS INTERNAL AREA
FLOOR 1: 758 sq. ft, FLOOR 2: 757 sq. ft
TOTAL: 1515 sq. ft
MEASUREMENTS CALCULATED BY V1PHOTOS.COM ARE DEEMED HIGHLY RELIABLE BUT NOT GUARANTEED.



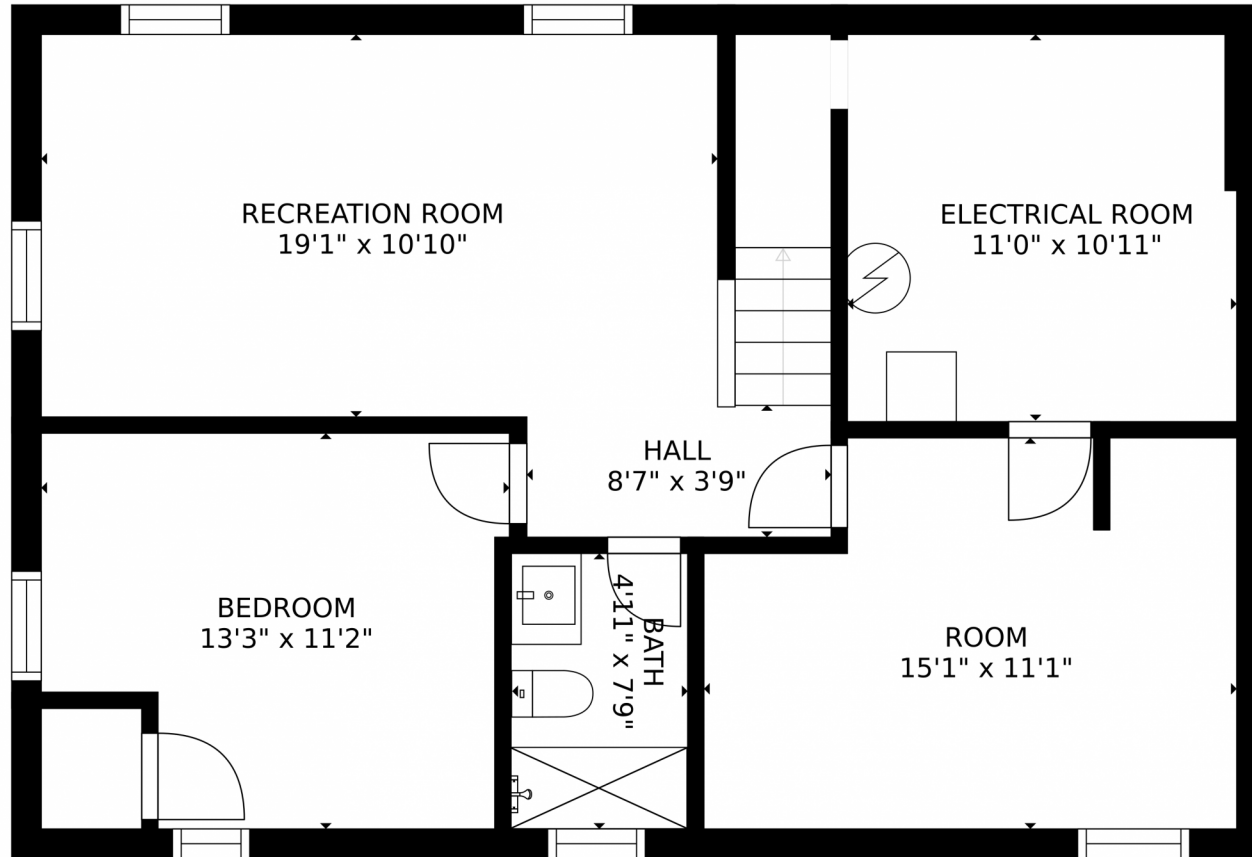
Disclaimer: Sizes and Dimensions are Approximate, Actual May Vary.



Kifle Leulseged
720-891-6979
kleulseged@gmail.com



8379 Vallejo Street, Denver, CO 80221 – Lower Level



GROSS INTERNAL AREA
FLOOR 1: 758 sq. ft. FLOOR 2: 757 sq. ft
TOTAL: 1515 sq. ft
MEASUREMENTS CALCULATED BY V1Photos.com ARE DEEMED HIGHLY RELIABLE BUT NOT GUARANTEED.



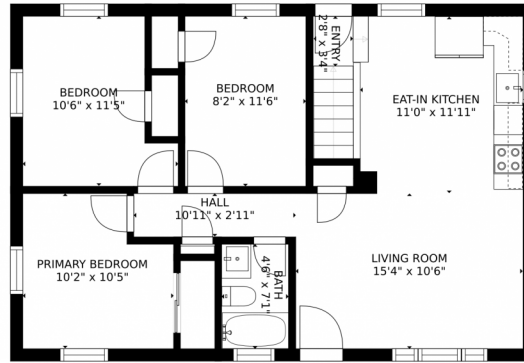
Disclaimer: Sizes and Dimensions are Approximate, Actual May Vary.



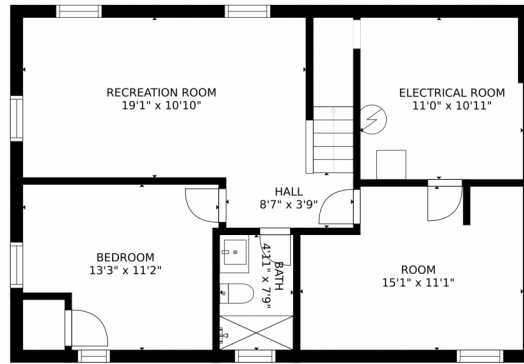
Kifle Leulseged
720-891-6979
kleulseged@gmail.com



8379 Vallejo Street, Denver, CO 80221 – All Levels



FLOOR 2



FLOOR 1

GROSS INTERNAL AREA
FLOOR 1: 758 sq. ft, FLOOR 2: 757 sq. ft
TOTAL: 1515 sq. ft
MEASUREMENTS CALCULATED BY V1Photos.COM ARE DEEMED HIGHLY RELIABLE BUT NOT GUARANTEED.



Disclaimer: Sizes and Dimensions are Approximate, Actual May Vary.



Kifle Leulseged
720-891-6979
kleulseged@gmail.com

