



24040 Genesee Village Road  
 Golden, CO 80401  
 COMMUNITY: Village at Genesee

MLS # 7667055  
 PRICE \$939,000



Single Family



3062 SQFT



3 Beds



3/1 Baths



2 Car



0.14 Acre

## PROPERTY DETAILS

Beautiful, open-concept, lodge-style mountain home in Genesee Village. Large wraparound deck opens right out to spectacular views of Genesee Mountain, migrating wildlife and the famous Sculptured House. 3BR, 4BA with fully finished, walkout basement in-law. Throughout, solid maple wood doors, solid maple plantation shutters and real-wood blinds as well as granite countertops. Brand-new water heater, newer furnace, and new contemporary

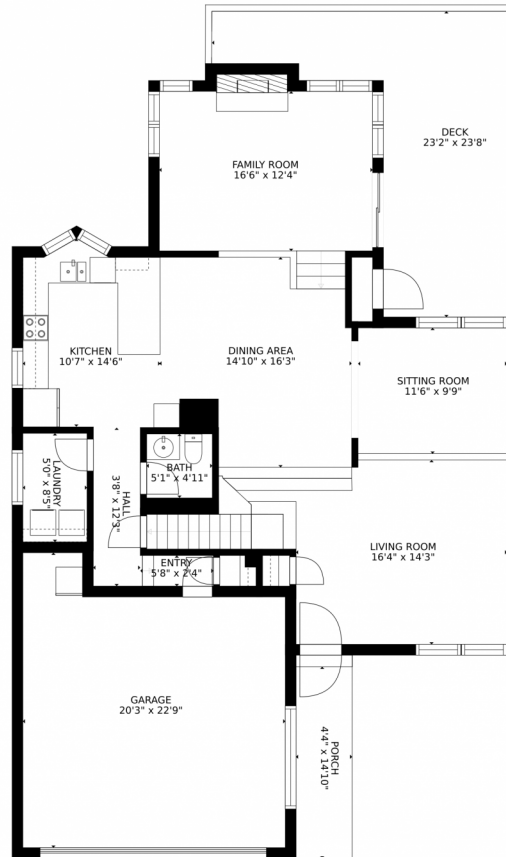
LED lighting and ceiling fans, new faucets, plumbing fixtures and re-insulation recently updated.

More than 3,000 square feet of comfy, cozy living for outdoor lovers. The property is professionally landscaped and surrounded by open space on 3 sides and the front opens right out onto a hiking and mountain-biking trail leading to the Genesee Mountain, American Bison and Beaver Brook trail systems. Also located right on the Genesee Mountain Loop road-biking circuit. Be skiing at Loveland in 40 minutes or attending a Rockies game in 30.

**Christopher Lynch**  
 630-886-4006  
 christopher.g.lynch@gmail.com



# 24040 Genesee Village Road, Golden, CO 80401 — Main Level



### Estimated areas

GLA FLOOR 1: 0 sq. ft. excluded 1063 sq. ft.  
GLA FLOOR 2: 1264 sq. ft. excluded 848 sq. ft.  
GLA FLOOR 3: 981 sq. ft. excluded 327 sq. ft.  
Total GLA 2265 sq. ft. total scanned area 4503 sq. ft.

SIZES AND DIMENSIONS ARE APPROXIMATE, ACTUAL MAY VARY.

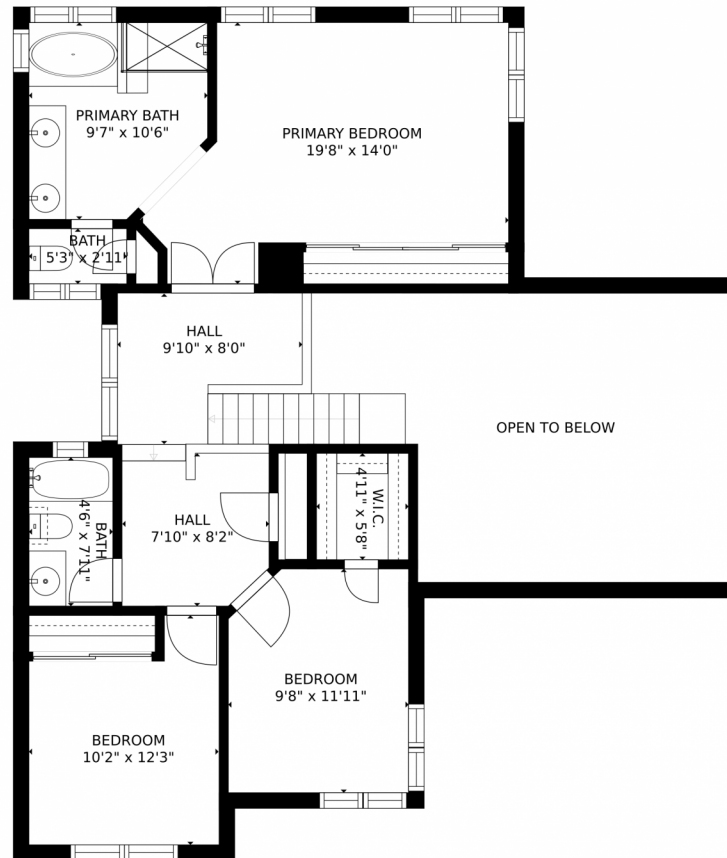


Disclaimer: Sizes and Dimensions are Approximate, Actual May Vary.

Christopher Lynch  
630-886-4006  
christopher.g.lynch@gmail.com



# 24040 Genesee Village Road, Golden, CO 80401 – Upper Level



### Estimated areas

GLA FLOOR 1: 0 sq. ft. excluded 1063 sq. ft.  
GLA FLOOR 2: 1264 sq. ft. excluded 848 sq. ft.  
GLA FLOOR 3: 981 sq. ft. excluded 327 sq. ft.  
Total GLA 2265 sq. ft. total scanned area 4503 sq. ft.

SIZES AND DIMENSIONS ARE APPROXIMATE, ACTUAL MAY VARY.

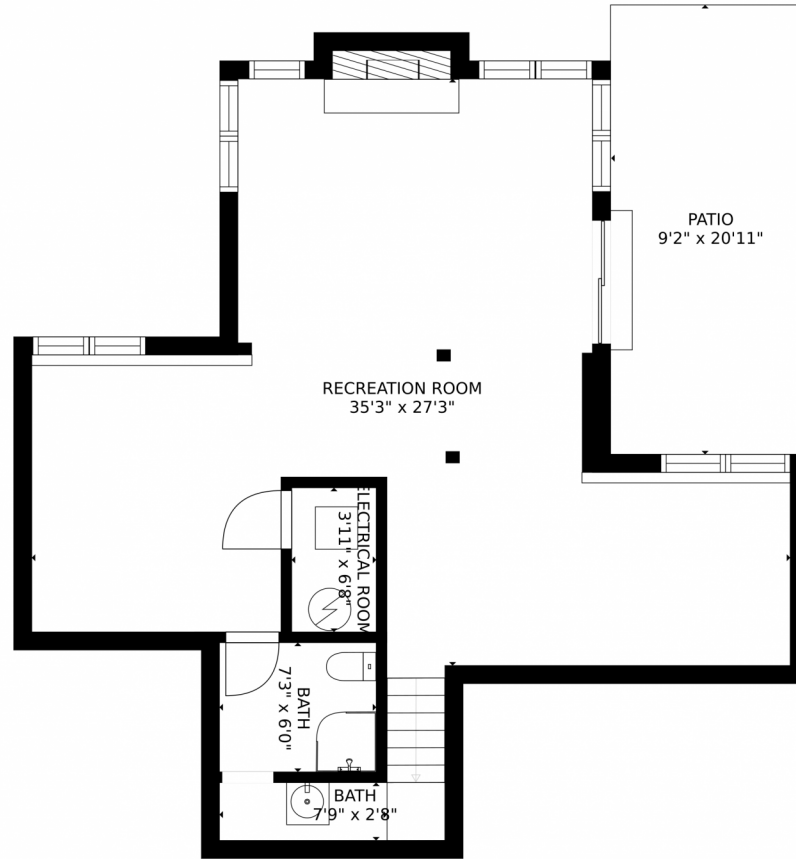


Disclaimer: Sizes and Dimensions are Approximate, Actual May Vary.

Christopher Lynch  
630-886-4006  
christopher.g.lynch@gmail.com



# 24040 Genesee Village Road, Golden, CO 80401 — Lower Level



### Estimated areas

GLA FLOOR 1: 0 sq. ft., excluded 1063 sq. ft.  
GLA FLOOR 2: 1264 sq. ft., excluded 848 sq. ft.  
GLA FLOOR 3: 981 sq. ft., excluded 327 sq. ft.  
Total GLA 2265 sq. ft., total scanned area 4503 sq. ft.

SIZES AND DIMENSIONS ARE APPROXIMATE, ACTUAL MAY VARY.

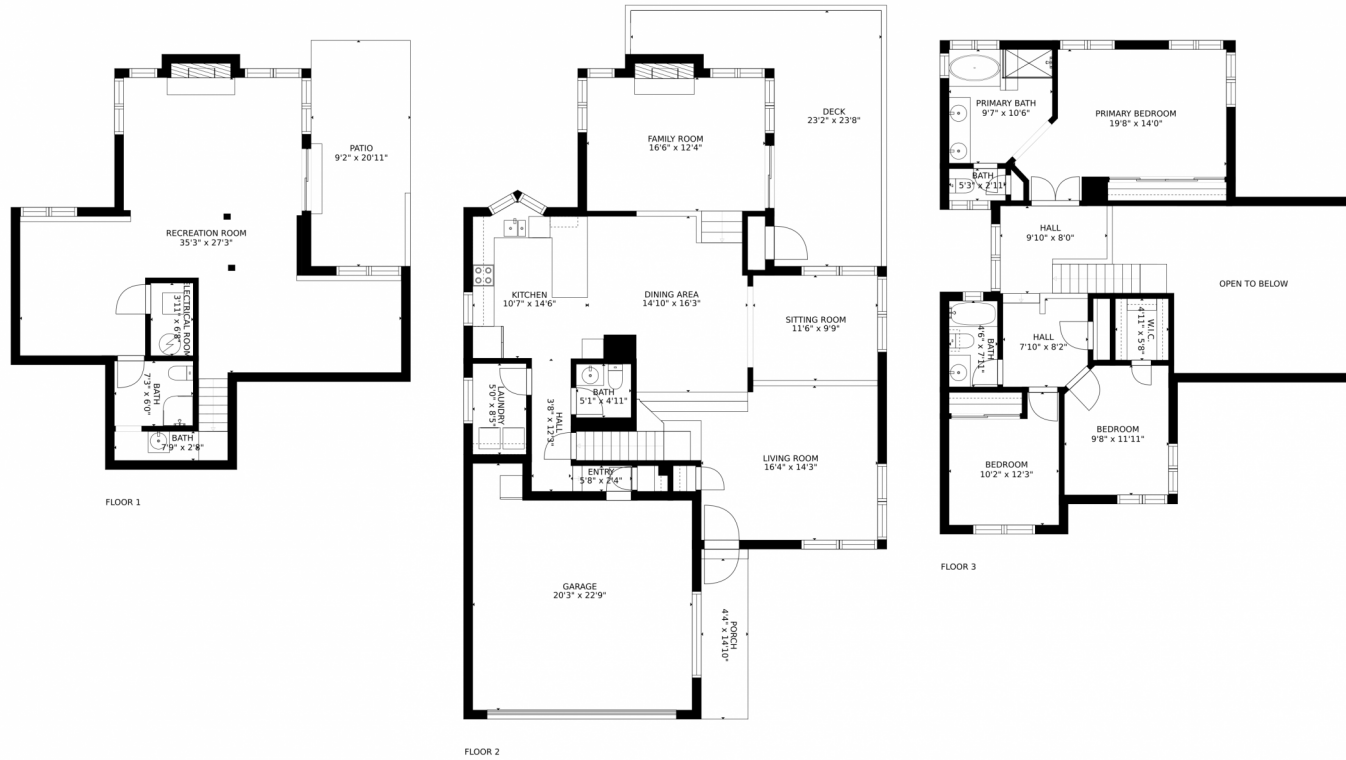


Disclaimer: Sizes and Dimensions are Approximate, Actual May Vary.

Christopher Lynch  
630-886-4006  
christopher.g.lynch@gmail.com



# 24040 Genesee Village Road, Golden, CO 80401 – All Levels



### Estimated areas

GLA FLOOR 1: 0 sq. ft., excluded 1063 sq. ft.  
GLA FLOOR 2: 1266 sq. ft., excluded 848 sq. ft.  
GLA FLOOR 3: 981 sq. ft., excluded 327 sq. ft.  
Total GLA 2265 sq. ft., total scanned area 4503 sq. ft.

SIZES AND DIMENSIONS ARE APPROXIMATE, ACTUAL MAY VARY.



Disclaimer: Sizes and Dimensions are Approximate, Actual May Vary.

Christopher Lynch  
630-886-4006  
christopher.g.lynch@gmail.com



Scan code  
for more  
property  
details

