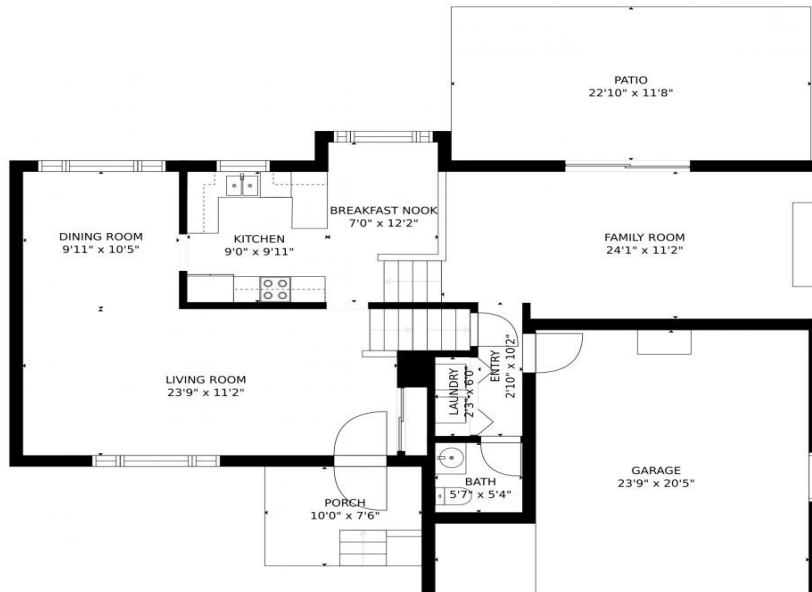
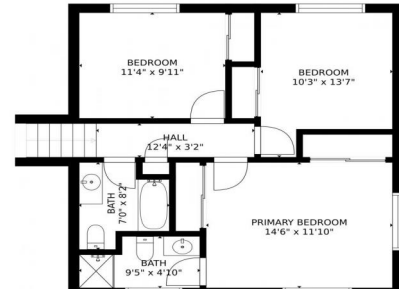


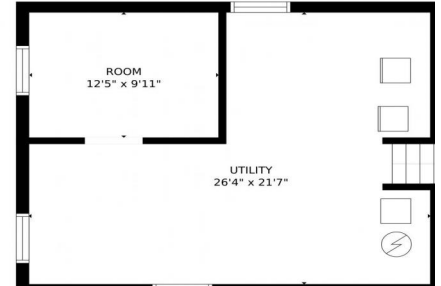
1953 South Newark Way, Aurora, CO 80014 - Main Level



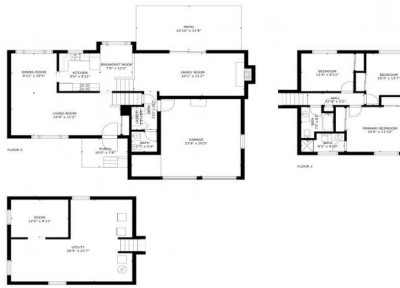
1953 South Newark Way, Aurora, CO 80014 - Second Level



1953 South Newark Way, Aurora, CO 80014 - Basement



1953 South Newark Way, Aurora, CO 80014 - All Levels



Single Family



2431 SQFT



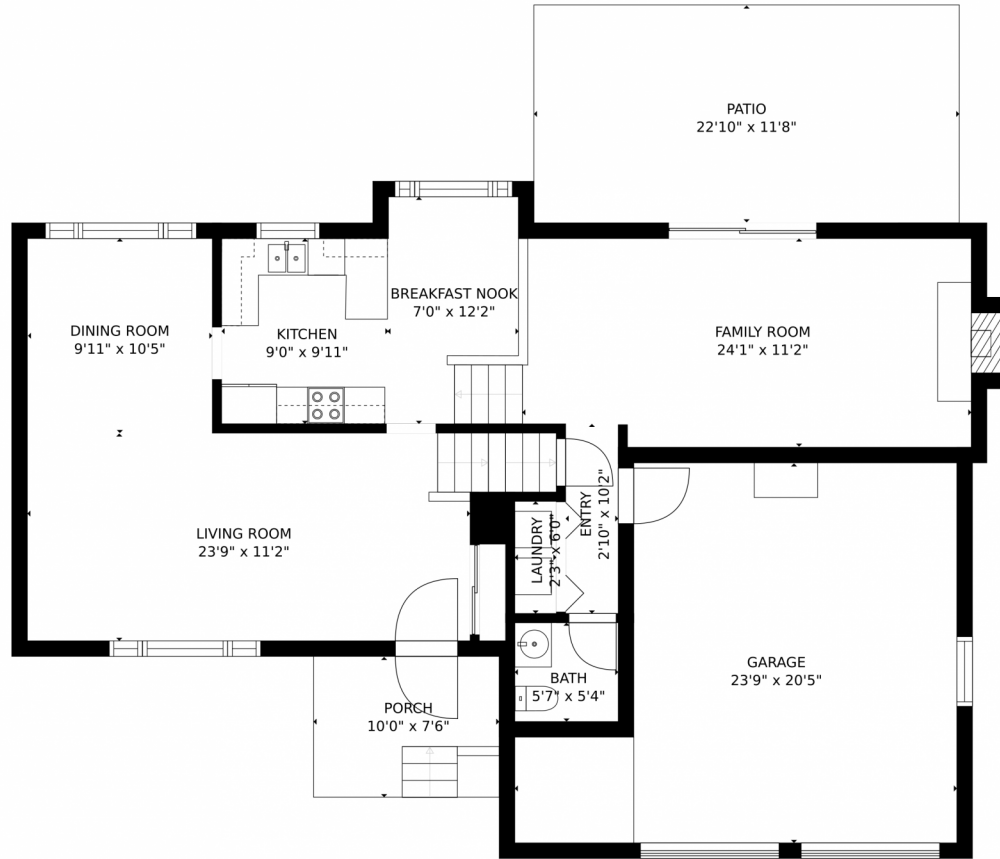
**Carlyn Parker**  
720-352-4644  
carlynparker@comcast.net



Scan code  
for more  
property  
details



# 1953 South Newark Way, Aurora, CO 80014 – Main Level



GROSS INTERNAL AREA  
FLOOR 1: 576 sq. ft. FLOOR 2: 943 sq. ft.  
FLOOR 3: 647 sq. ft. EXCLUDED AREAS:  
GARAGE: 390 sq. ft. PATIO: 267 sq. ft.  
PORCH: 75 sq. ft.  
TOTAL: 2166 sq. ft.  
MEASUREMENTS CALCULATED BY V1Photos.COM ARE DEEMED HIGHLY RELIABLE BUT NOT GUARANTEED.

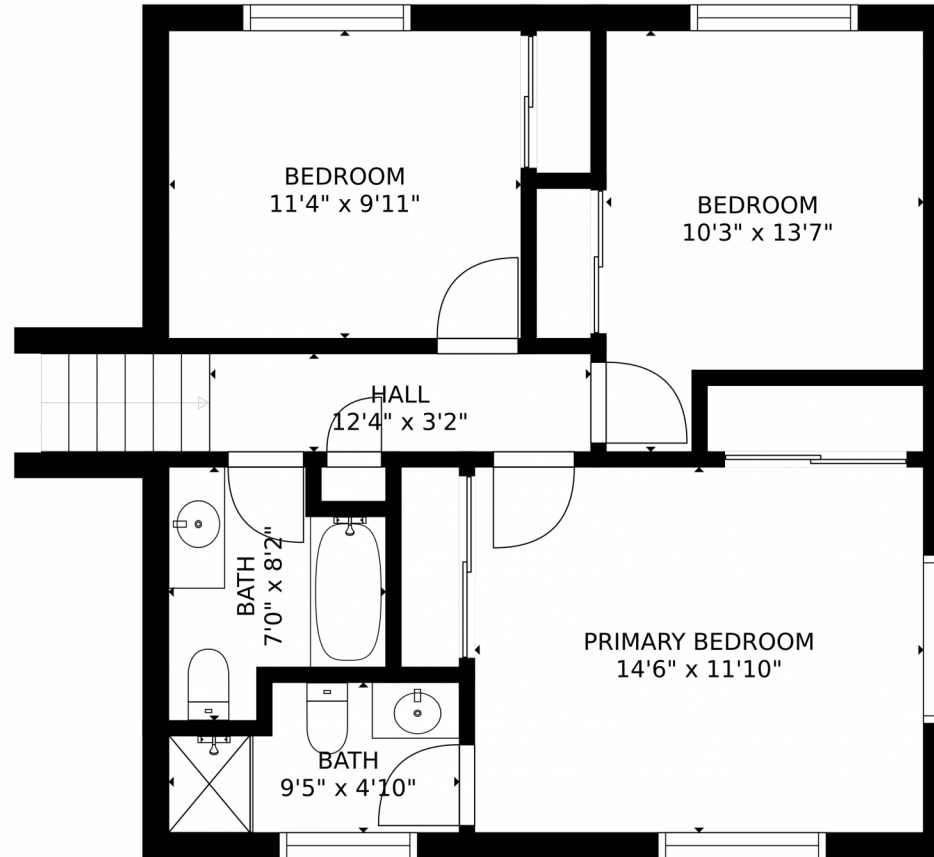
Disclaimer: Sizes and Dimensions are Approximate, Actual May Vary.



**Carlyn Parker**  
720-352-4644  
carlynparker@comcast.net



1953 South Newark Way, Aurora, CO 80014 – Second Level



GROSS INTERNAL AREA  
FLOOR 1: 576 sq. ft. FLOOR 2: 943 sq. ft.  
FLOOR 3: 647 sq. ft. EXCLUDED AREAS:  
GARAGE: 390 sq. ft. PATIO: 267 sq. ft.  
PORCH: 75 sq. ft.  
TOTAL: 2166 sq. ft.  
MEASUREMENTS CALCULATED BY V1Photos.COM ARE DEEMED HIGHLY RELIABLE BUT NOT GUARANTEED.



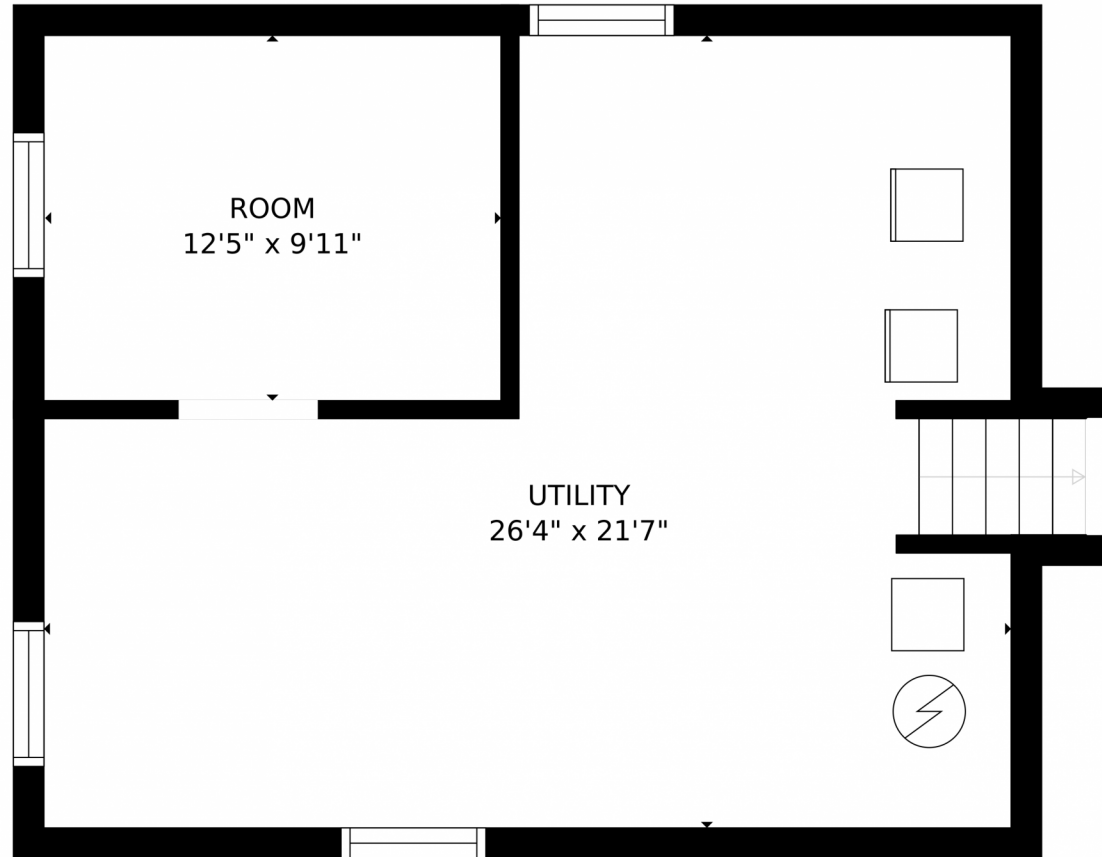
Disclaimer: Sizes and Dimensions are Approximate, Actual May Vary.



**Carlyn Parker**  
720-352-4644  
carlynparker@comcast.net



1953 South Newark Way, Aurora, CO 80014 – Basement



GROSS INTERNAL AREA  
FLOOR 1: 576 sq. ft. FLOOR 2: 943 sq. ft.  
FLOOR 3: 647 sq. ft. EXCLUDED AREAS:  
GARAGE: 390 sq. ft. PATIO: 267 sq. ft.  
PORCH: 75 sq. ft.  
TOTAL: 2166 sq. ft.

MEASUREMENTS CALCULATED BY V1Photos.COM ARE DEEMED HIGHLY RELIABLE BUT NOT GUARANTEED.



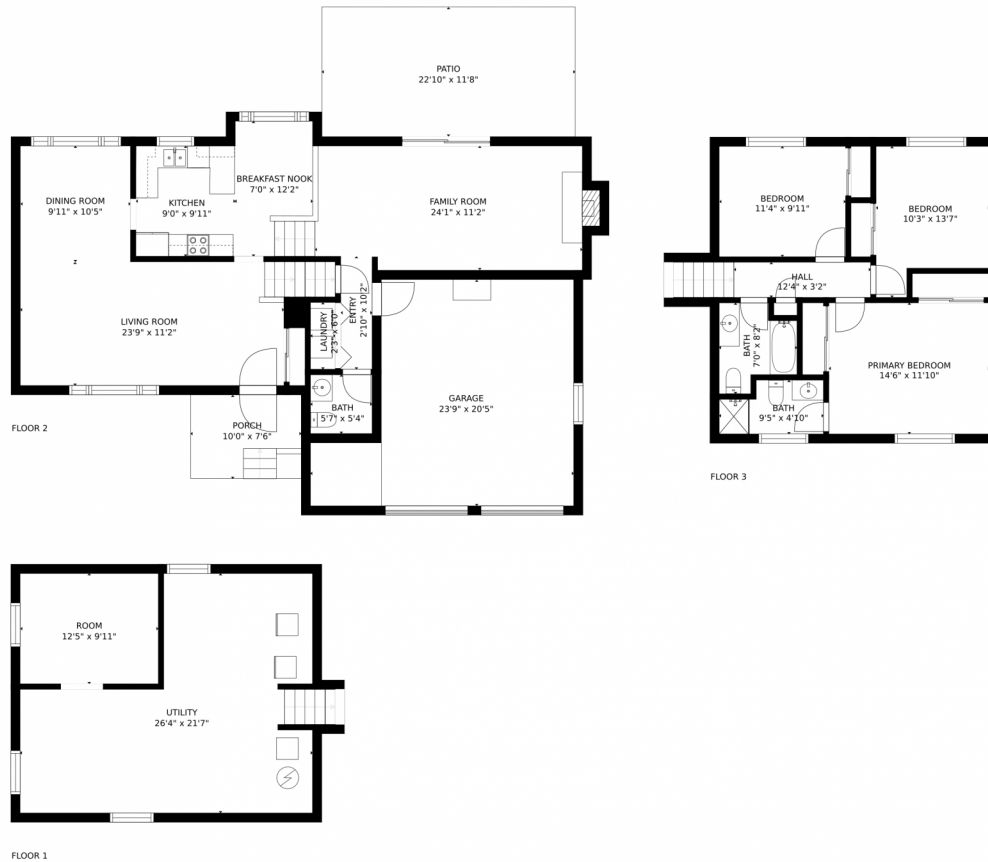
Disclaimer: Sizes and Dimensions are Approximate, Actual May Vary.



**Carlyn Parker**  
720-352-4644  
carlynparker@comcast.net



# 1953 South Newark Way, Aurora, CO 80014 – All Levels



GROSS INTERNAL AREA  
FLOOR 1: 576 sq. ft. FLOOR 2: 943 sq. ft.  
FLOOR 3: 647 sq. ft. EXCLUDED AREAS:  
GARAGE: 390 sq. ft. PATIO: 267 sq. ft.  
PORCH: 75 sq. ft.  
TOTAL: 2166 sq. ft.

MEASUREMENTS CALCULATED BY V1Photos.com ARE DEEMED HIGHLY RELIABLE BUT NOT GUARANTEED.



Disclaimer: Sizes and Dimensions are Approximate, Actual May Vary.



**Carlyn Parker**  
720-352-4644  
carlynparker@comcast.net

