




12126 South Hosman Circle
Conifer, CO 80433
COMMUNITY: Kings Valley




 Single Family

 2206 SQFT

 3 Beds

 3 Baths

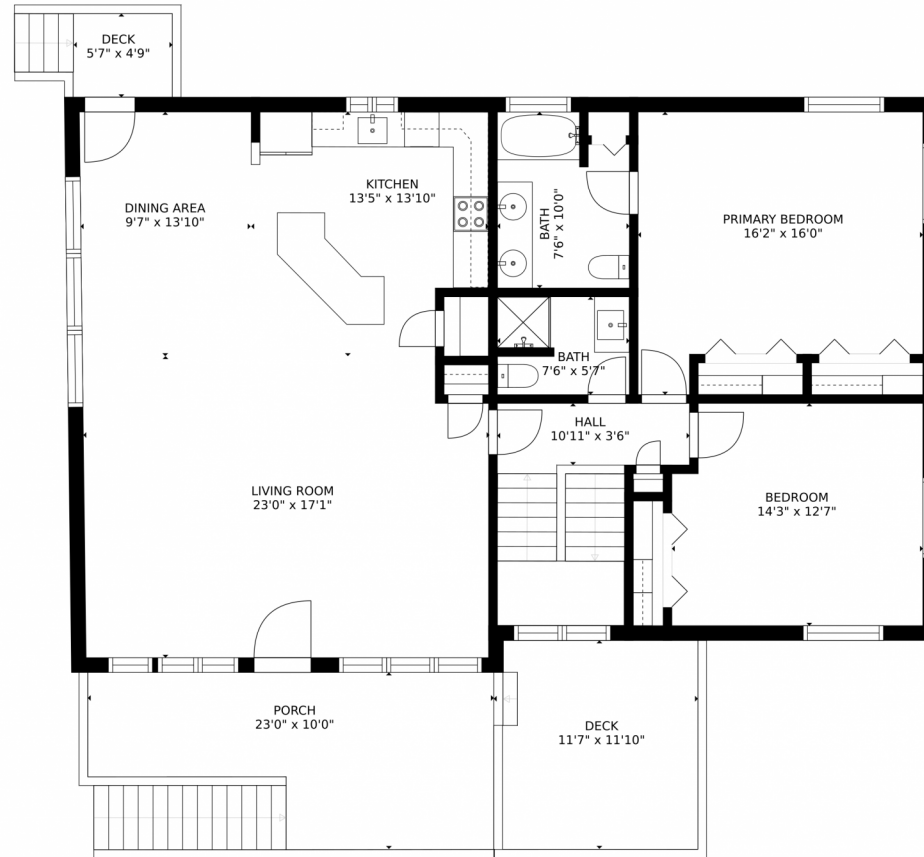
 3 Car

 0.46 Acre

Jessica Ford
720-840-0655
mymountainproperties@gmail.com



12126 South Hosman Circle, Conifer, CO 80433 – Main Level



GROSS INTERNAL AREA
FLOOR 1: 691 sq. ft., FLOOR 2: 1426 sq. ft.
EXCLUDED AREAS: , GARAGE: 697 sq. ft.
PATIO: 217 sq. ft., DECK: 173 sq. ft.
PORCH: 184 sq. ft.
TOTAL: 2117 sq. ft.
MEASUREMENTS CALCULATED BY V1Photos.COM ARE DEEMED HIGHLY RELIABLE BUT NOT GUARANTEED.

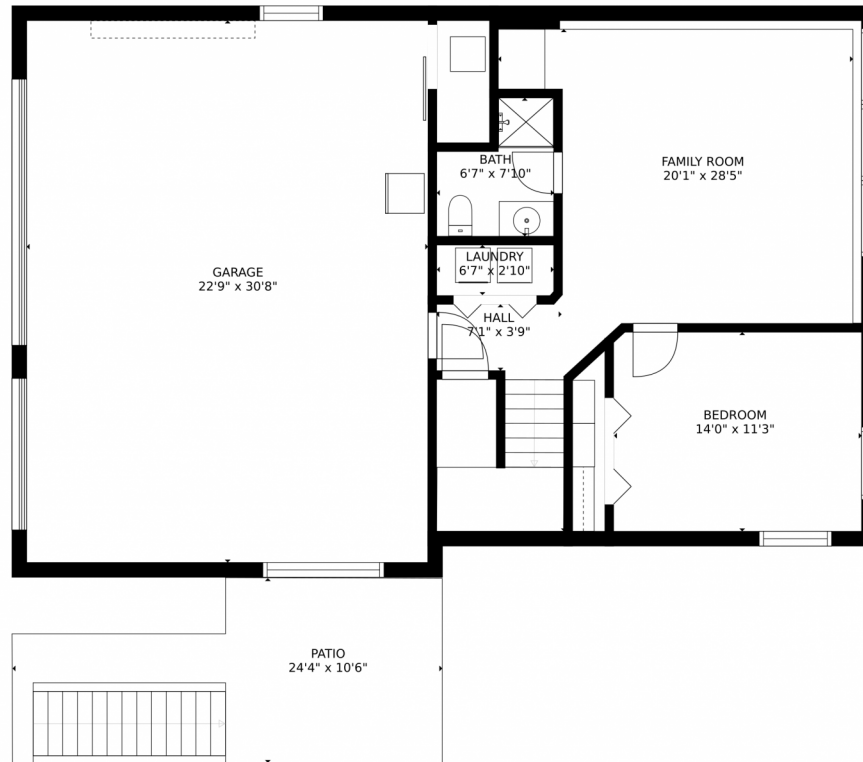
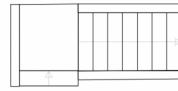


Disclaimer: Sizes and Dimensions are Approximate, Actual May Vary.

Jessica Ford
720-840-0655
mymountainproperties@gmail.com



12126 South Hosman Circle, Conifer, CO 80433 — Lower Level



GROSS INTERNAL AREA
FLOOR 1: 691 sq. ft, FLOOR 2: 1426 sq. ft
EXCLUDED AREAS: , GARAGE: 697 sq. ft
PATIO: 217 sq. ft, DECK: 173 sq. ft
PORCH: 184 sq. ft
TOTAL: 2117 sq. ft

MEASUREMENTS CALCULATED BY V1Photos.COM ARE DEEMED HIGHLY RELIABLE BUT NOT GUARANTEED.

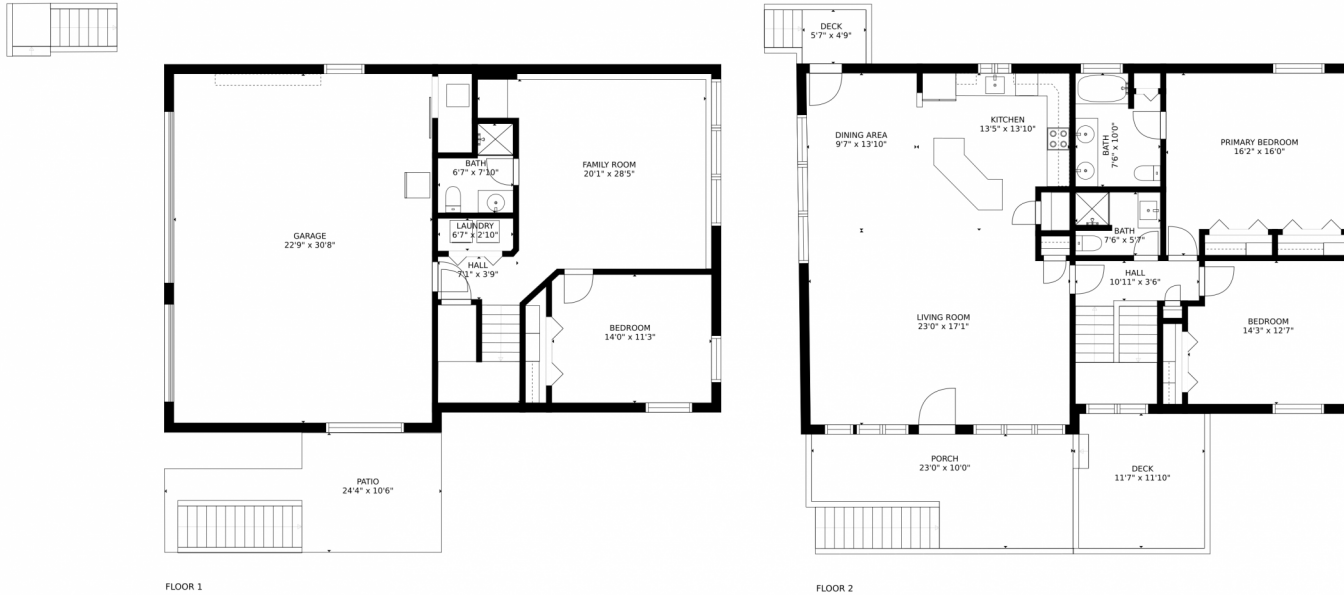


Disclaimer: Sizes and Dimensions are Approximate, Actual May Vary.

Jessica Ford
720-840-0655
mymountainproperties@gmail.com



12126 South Hosman Circle, Conifer, CO 80433 – All Levels



GROSS INTERNAL AREA
FLOOR 1: 691 sq. ft., FLOOR 2: 1426 sq. ft.
EXCLUDED AREAS: GARAGE: 697 sq. ft.
PATIO: 217 sq. ft., DECK: 173 sq. ft.
PORCH: 184 sq. ft.
TOTAL: 2117 sq. ft.

MEASUREMENTS CALCULATED BY V1Photos.COM ARE DEEMED HIGHLY RELIABLE BUT NOT GUARANTEED.



Disclaimer: Sizes and Dimensions are Approximate, Actual May Vary.

Jessica Ford
720-840-0655
mymountainproperties@gmail.com



Scan code
for more
property
details

