



 Single Family

 900 SQFT

 2 Beds

 1/1 Baths

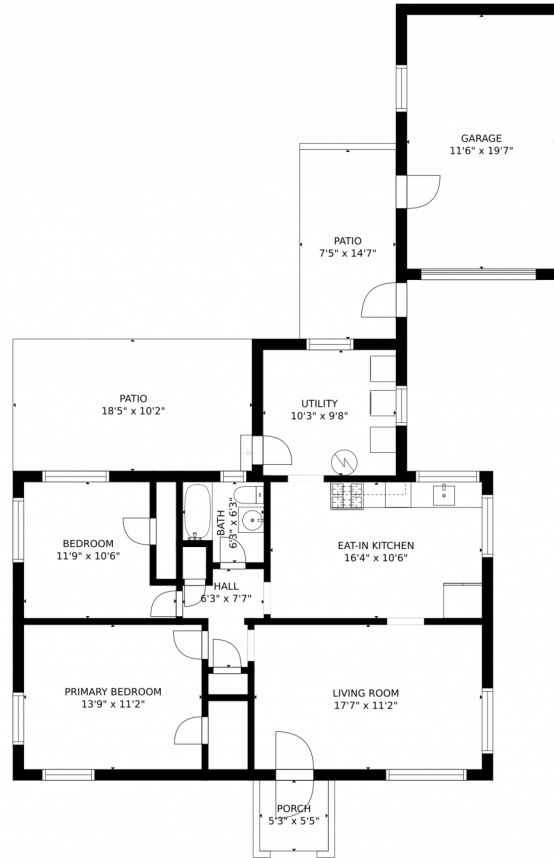
 1 Car



Joey Hoiescu
619-806-7014
joey@luxdenver.com
<https://www.thepropertysomm.com>



1224 Quince Street, Denver, CO 80220 – Main Level



GROSS INTERNAL AREA
FLOOR 1: 886 sq. ft. EXCLUDED AREAS:
GARAGE: 225 sq. ft. PATIO: 296 sq. ft.
PORCH: 29 sq. ft.
TOTAL: 886 sq. ft.

MEASUREMENTS CALCULATED BY V1Photos.com ARE DEEMED HIGHLY RELIABLE BUT NOT GUARANTEED.



Disclaimer: Sizes and Dimensions are Approximate, Actual May Vary.



Joey Hoiescu
619-806-7014
joey@luxdenver.com
<https://www.thepertysomm.com>



Scan code
for more
property
details

