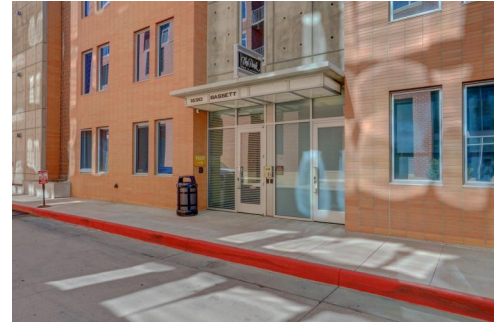




1690 Bassett Street Unit #4
 Denver, CO 80202
 COMMUNITY: One Riverfront

MLS # 9705074

PRICE
 \$1,375,000



Condominium



2087 SQFT



3 Beds



2/1 Baths



2 Car

PROPERTY DETAILS

LOCATOIN, LOCATION, LOCATION!!! One of a kind spacious 3 bedroom, 3 bathroom condo where urban meets nature. Enjoy the great outdoors with walks in the park from your doorstep, summer concerts and/or grab your kayak or bike and enjoy the south Platte River/Cherry Creek trail. Like city life? Walk to local eateries, shopping, entertainment, Highlands area, sporting venues and just steps to the Millennium bridge where you can hop on the light rail. This is downtown Denver at it's finest! This first floor unit offers a large patio ideal for relaxing or BBQs with private gated entrance and unobstructed views of Commons Park. Inside, enjoy this bright and open floorplan with 10' ceilings, maple wood floors, cozy fireplace in the family room, floor to ceiling windows, modern kitchen with 10' Chroma leathered island-perfect for entertaining and equipped with wine cooler, Sub Zero refrigerator, Wolff gas cook top stove and oven, and a on demand hot water dispenser. The primary bedroom offers a private en-suite with soaking tub, walk-in shower, double sinks, and walk-in closet. In addition, this well-maintained home offers Elfa closet systems, Lutron automatic blinds, custom built-in desk and murphy bed, washer and dryer included, 2 parking spaces in the well lit garage, 5x8 storage unit, bike rack, and outside communal area. This is a must see. Highly desired location and building were owners rarely sell!



Danielle Marcus

303-669-7974

danielle@themarcusteam.com

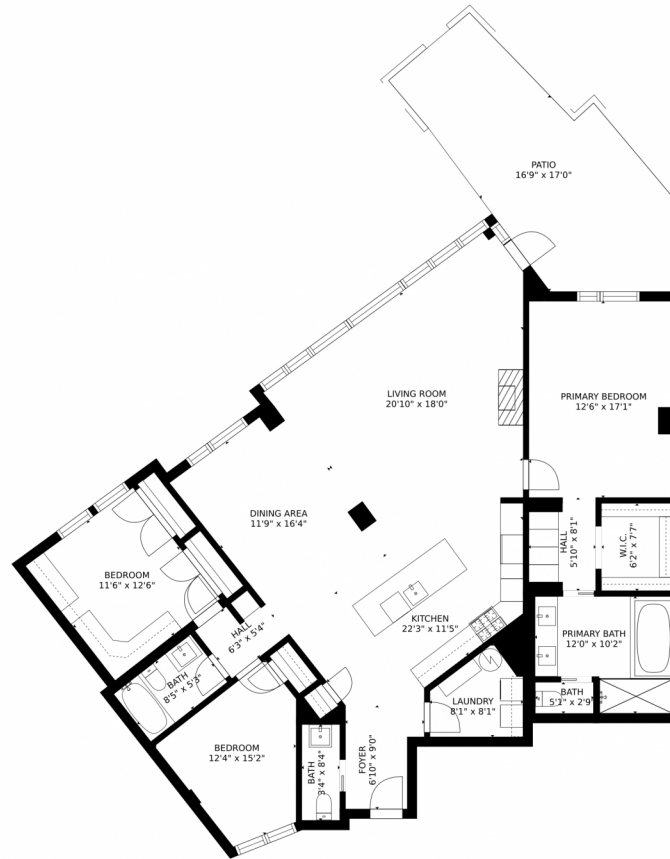
<https://www.themarcusteam.com>



Scan code
 for more
 property
 details



1690 Bassett Street Unit #4, Denver, CO 80202 – Main Level



GROSS INTERNAL AREA
FLOOR 1: 1837 sq. ft. EXCLUDED AREAS:
PATIO: 308 sq. ft
TOTAL: 1837 sq. ft

MEASUREMENTS CALCULATED BY V1Photos.com ARE DEEMED HIGHLY RELIABLE BUT NOT GUARANTEED.



Disclaimer: Sizes and Dimensions are Approximate, Actual May Vary.



Danielle Marcus
303-669-7974
danielle@themarkusteam.com
<https://www.themarkusteam.com>

