




 Single Family

 1208 SQFT

 2 Beds

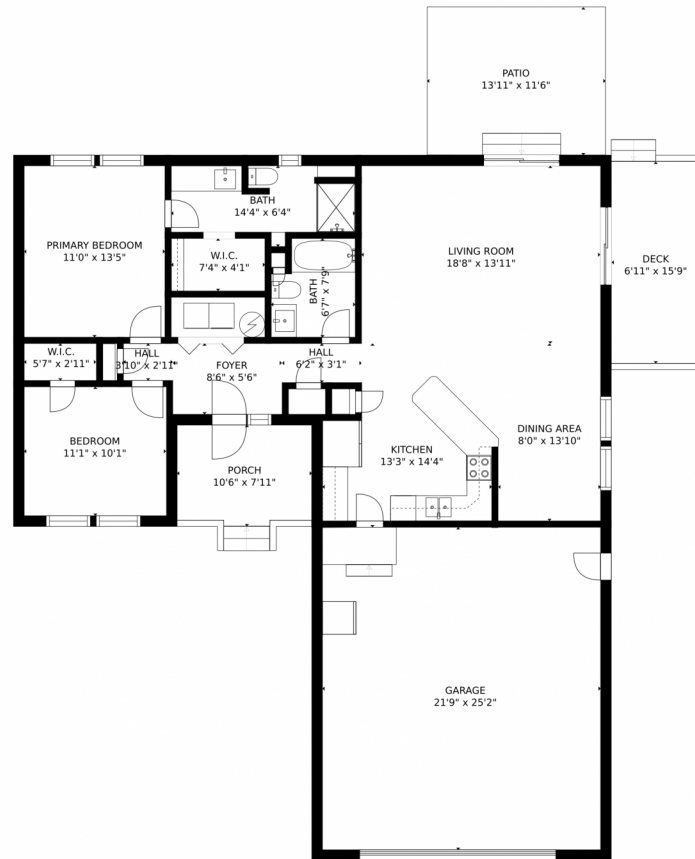
 1 Baths



Taylor Haas
303-665-7368
taylorh@coloradorpm.com
<https://www.coloradorpm.com/available-rental-properties-denver>



2354 Augusta Avenue, Loveland, CO 80538 – Floor Plan



GROSS INTERNAL AREA
FLOOR 1: 1143 sq. ft. EXCLUDED AREAS:
GARAGE: 547 sq. ft., DECK: 109 sq. ft.
PATIO: 161 sq. ft., PORCH: 80 sq. ft.
TOTAL: 1143 sq. ft.

MEASUREMENTS CALCULATED BY V1Photos.com ARE DEEMED HIGHLY RELIABLE BUT NOT GUARANTEED.



Disclaimer: Sizes and Dimensions are Approximate, Actual May Vary.



Taylor Haas

303-665-7368

taylorh@coloradorpm.com

<https://www.coloradorpm.com/available-rental-properties-denver>



Scan code
for more
property
details

