




 Single Family    1872 SQFT    3 Beds    2/1 Baths    2 Car    1.12 Acre

## PROPERTY DETAILS

Visit [38quartzcir.info](http://38quartzcir.info) for more information on this wonderful home!

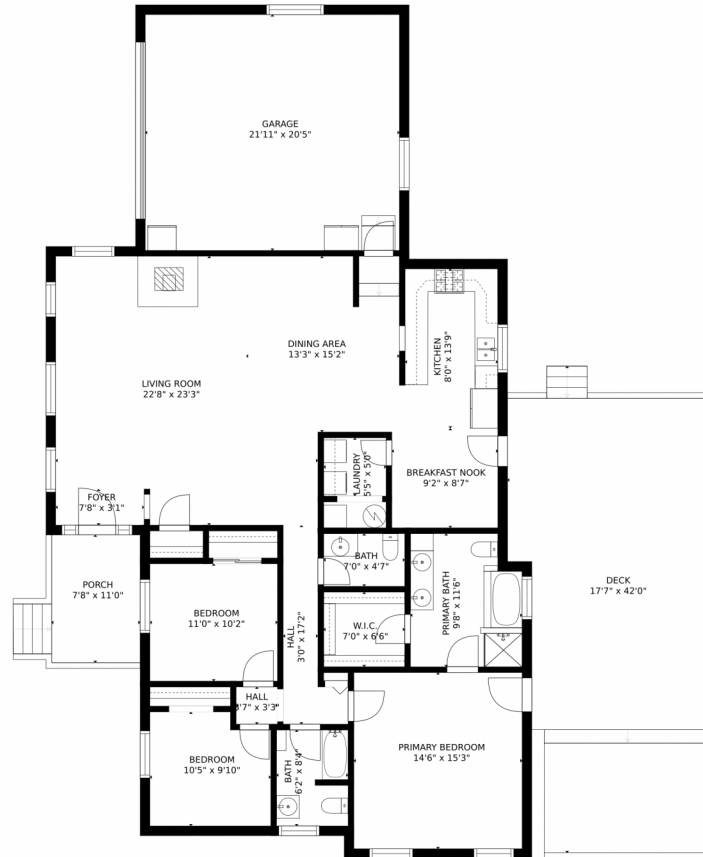
Lovely custom log home on a sunny 1.12 acre lot. Views of Mt. Rosalie, Mt. Bandit & Mt. Logan. Full-time home, extraordinary vacation home or investment property. LOW Park County taxes, easy access to Breck & Summit County ski areas & Pike National Forest w/camping, fishing & hiking w/charming downtown Bailey offering a taste of small-town CO.



**Carrie Baldwin**  
303-885-5118  
[cjb@carriebaldwin.com](mailto:cjb@carriebaldwin.com)



# 38 Quartz Circle, Bailey, CO 80421 — Main Level



GROSS INTERNAL AREA  
FLOOR 1: 1734 sq. ft. EXCLUDED AREAS:  
GARAGE: 447 sq. ft. DECK: 635 sq. ft  
PORCH: 99 sq. ft  
TOTAL: 1734 sq. ft  
MEASUREMENTS CALCULATED BY V1Photos.COM ARE DEEMED HIGHLY RELIABLE BUT NOT GUARANTEED.



Disclaimer: Sizes and Dimensions are Approximate, Actual May Vary.



**Carrie Baldwin**  
303-885-5118  
cjb@carriebaldwin.com



Scan code  
for more  
property  
details

