




 Single Family

 1300 SQFT

 4 Beds

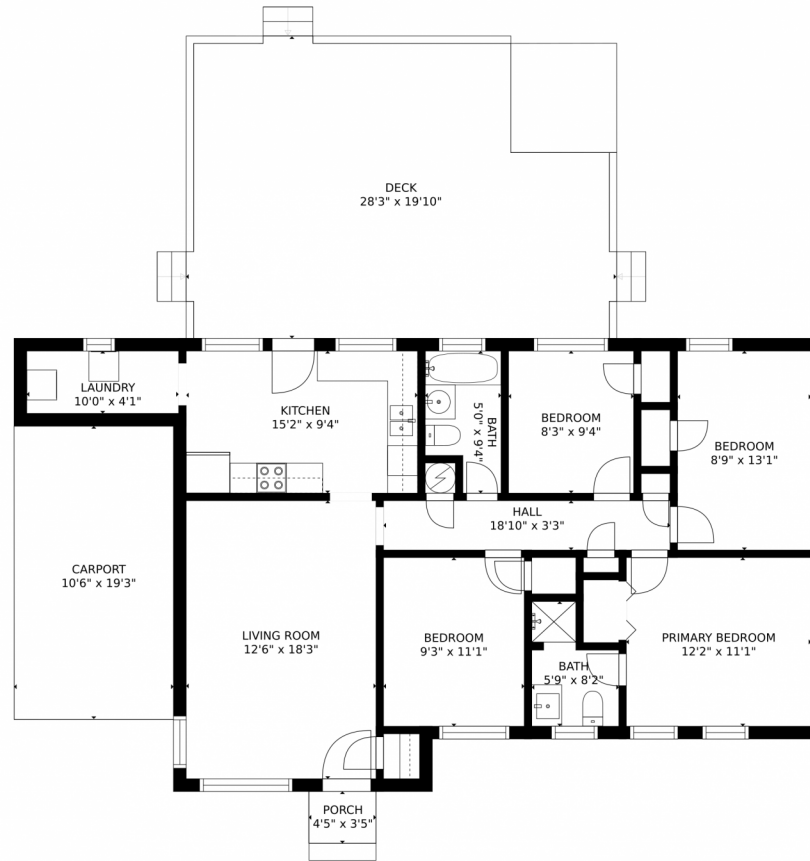
 2 Baths



Taylor Haas
303-665-7368
taylorh@coloradorpm.com
<https://www.coloradorpm.com/available-rental-properties-denv>



2400 Valley View Drive, Denver, CO 80221 – Main Level



GROSS INTERNAL AREA
FLOOR 1: 1108 sq. ft. EXCLUDED AREAS:
DECK: 487 sq. ft. PORCH: 15 sq. ft.
TOTAL: 1108 sq. ft.
MEASUREMENTS CALCULATED BY V1Photos.COM ARE DEEMED HIGHLY RELIABLE BUT NOT GUARANTEED.



Disclaimer: Sizes and Dimensions are Approximate, Actual May Vary.



Taylor Haas
303-665-7368
taylorh@coloradorpm.com
<https://www.coloradorpm.com/available-rental-properties-denver>

