



1720 Lombardy Drive
 Boulder, CO 80304
 COMMUNITY: Melody Heights

MLS # IR976816
 PRICE \$1,295,000



Single Family



2208 SQFT



4 Beds



3 Baths



1 Car



0.16 Acre

PROPERTY DETAILS

Simply beautiful mid century modern remodel. Open the front door to airy vaulted ceilings, large picture window and shiny real oak hardwood floors. Upgrades included casement windows in Living room, double pane vinyl windows and newer patio sliders thru out. 200 amp electrical service, updated lighting and new kitchen and baths. Kitchen has maple soft close cabinetry with cherry stain, granite counter tops and glass tile back splash. Large trex style deck with steel joists right off kitchen. Stainless steel appliances, 5 burner range with convention oven, microwave and Bosch dishwasher . Doors and trim have all been updated. 3 bedrooms and 2 baths on main floor. Primary bedroom has private 3/4 bath with custom tile work. All 3 bathrooms have been beautifully updated. Fully finished walkout basement has huge family room, 12 x8 laundry room with deep sink and folding table, 4 th bdrm and 3/4 bath with heated floor. Wonderful private fenced back yard with peekaboo view of Flatirons sprinkler system in front and back yard. Quiet neighborhood close to foothills open space trails. Great southern exposure off the back of the house..



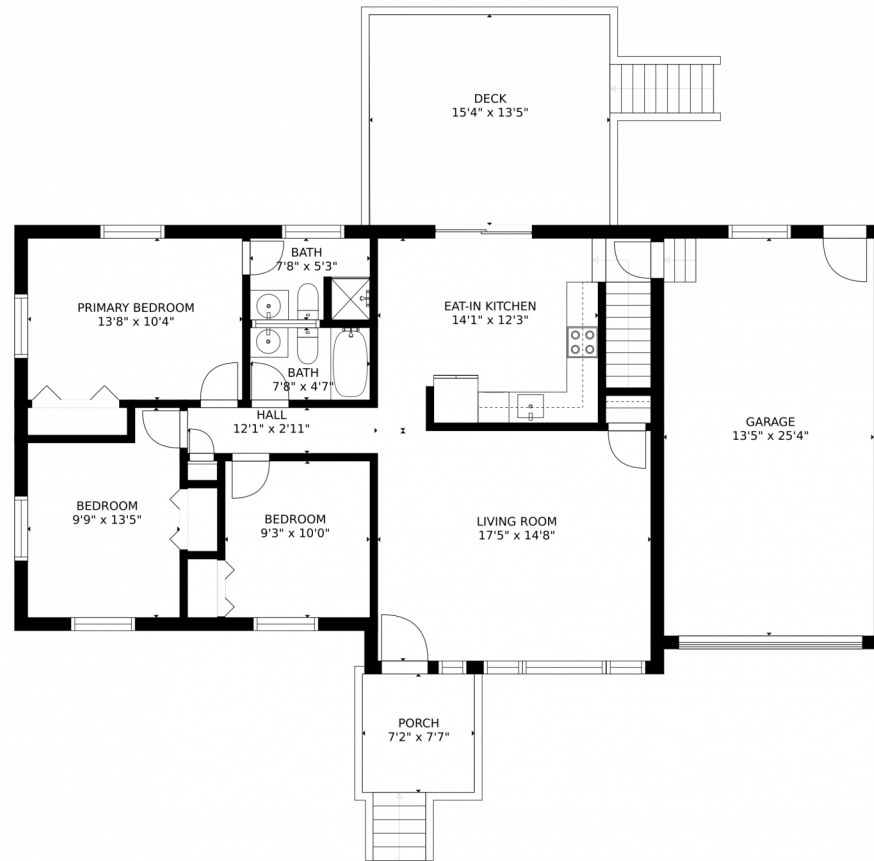
Pete Abel
 303-594-8319
 peteabelsold4u@boulderco.com
 https://www.peteabel.com



Scan code
 for more
 property
 details



1720 Lombardy Drive, Boulder, CO 80304 – Main Level



GROSS INTERNAL AREA
FLOOR 1: 962 sq. ft., FLOOR 2: 1010 sq. ft.
EXCLUDED AREAS: , PATIO: 188 sq. ft.
GARAGE: 341 sq. ft., DECK: 206 sq. ft.
PORCH: 54 sq. ft.
TOTAL: 1973 sq. ft.

MEASUREMENTS CALCULATED BY V1Photos.COM ARE DEEMED HIGHLY RELIABLE BUT NOT GUARANTEED.



Disclaimer: Sizes and Dimensions are Approximate, Actual May Vary.



Pete Abel
303-594-8319
peteabelsold4u@boulderco.com
<https://www.peteabel.com>



Scan code
for more
property
details



1720 Lombardy Drive, Boulder, CO 80304 – Lower Level



GROSS INTERNAL AREA
FLOOR 1: 962 sq. ft., FLOOR 2: 1010 sq. ft.
EXCLUDED AREAS: , PATIO: 188 sq. ft.
GARAGE: 341 sq. ft., DECK: 206 sq. ft.
PORCH: 54 sq. ft.
TOTAL: 1973 sq. ft.

MEASUREMENTS CALCULATED BY V1Photos.com ARE DEEMED HIGHLY RELIABLE BUT NOT GUARANTEED.



Disclaimer: Sizes and Dimensions are Approximate, Actual May Vary.



Pete Abel

303-594-8319

peteabelsold4u@boulderco.com

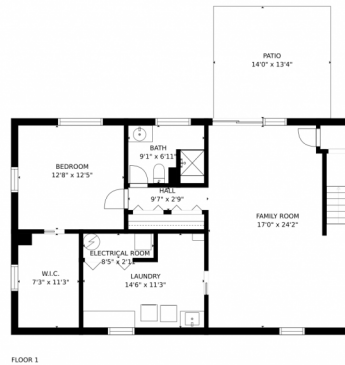
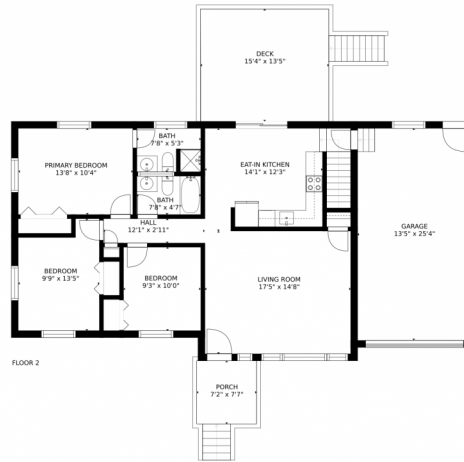
<https://www.peteabel.com>



Scan code
for more
property
details



1720 Lombardy Drive, Boulder, CO 80304 – All Levels



GROSS INTERNAL AREA
FLOOR 1: 962 sq. ft., FLOOR 2: 1010 sq. ft.
EXCLUDED AREAS: , PATIO: 188 sq. ft.
GARAGE: 341 sq. ft., DECK: 206 sq. ft.
PORCH: 54 sq. ft.
TOTAL: 1973 sq. ft.

MEASUREMENTS CALCULATED BY V1Photos.com ARE DEEMED HIGHLY RELIABLE BUT NOT GUARANTEED.



Disclaimer: Sizes and Dimensions are Approximate, Actual May Vary.



Pete Abel
303-594-8319
peteabelsold4u@boulderco.com
<https://www.peteabel.com>



Scan code
for more
property
details

