

Single Family



2486 SQFT



4 Beds



3/1 Baths



3 Car



0.18 Acre

## PROPERTY DETAILS

Lovely Updated 4-Bedroom Home on Corner Lot in Sunrise Creek. 3-Car Garage. As you enter you are Greeted by Soaring Ceilings, the warmth of Real Wood Flooring, and a room Flooded with Natural Light from the Bay Window. Open Floor Plan-Perfect for Entertaining. Updated Kitchen-Kitchen Nook with Bay Window, Granite Counters, Stainless-Steel Appliances & Smart Refrigerator. Relax in Family Room by Gas Log Fireplace. Custom Patio-Private Backyard. Main Floor Laundry Room. Bonus Room and Updated 3/4 Bath in Finished Basement offers so many Possibilities-Movie Theater Room, Fitness Center, Office, Teenagers Dream Space, Guest Suite, or..... Beautiful Staircase and Open Upper-Level Hallway add to the Spacious Feel of this Home. Primary Suite with Vaulted Ceiling, Mountain View, Updated Bath with Double Sink Vanity, Granite Countertop, Glass Shower-Designer Tile, and Spacious Walkin Closet. Guest Bath with Double Sink Vanity serves 3 Secondary Bedrooms. Bedroom with French Doors has Walkin Closet-Great as a Den/Office space as well. Vivent Smart Security System included. Great Location near Country West Greenbelt and Sunrise Creek Park. Easy Access to Mountains, Downtown Denver, C470 and Hwy 285.



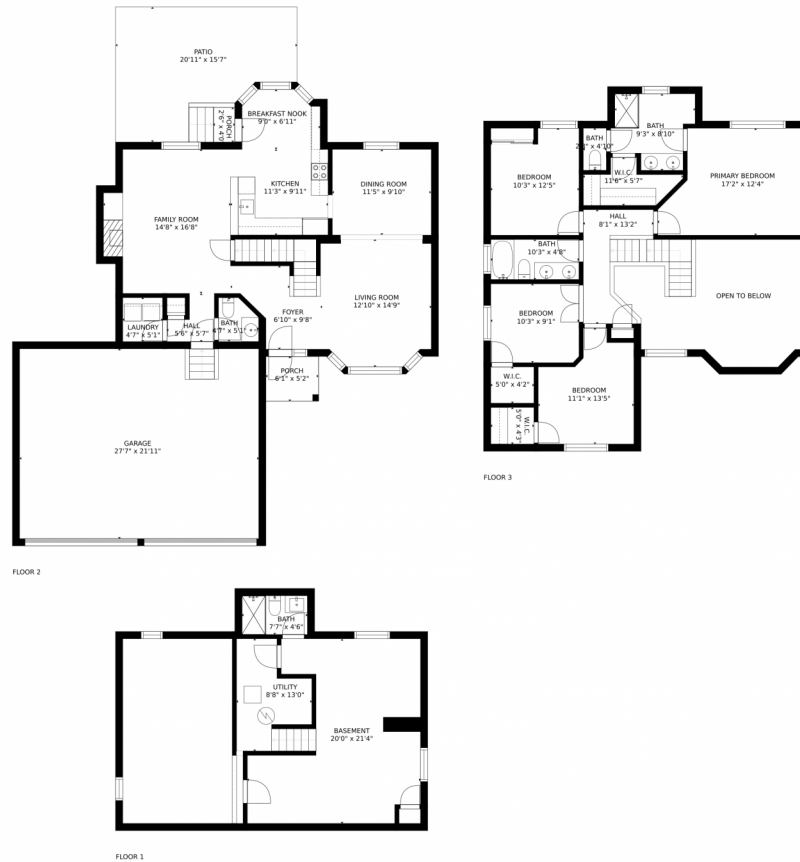
**Cyndy Halley**  
303-548-0151  
cyndyhalley@comcast.net



Scan code  
for more  
property  
details



# 11452 West Prentice Drive, Littleton, CO 80127 – All Levels



GROSS INTERNAL AREA  
FLOOR 1: 503 sq. ft, FLOOR 2: 901 sq. ft  
FLOOR 3: 927 sq. ft, EXCLUDED AREAS:  
REDUCED HEADROOM BELOW 1.5M: 270 sq. ft, GARAGE: 607 sq. ft  
PATIO: 257 sq. ft, PORCH: 41 sq. ft  
TOTAL: 2330 sq. ft  
MEASUREMENTS CALCULATED BY V1Photos.COM ARE DEEMED HIGHLY RELIABLE BUT NOT GUARANTEED.



Disclaimer: Sizes and Dimensions are Approximate, Actual May Vary.



**Cyndy Halley**  
303-548-0151  
cyndyhalley@comcast.net

