



3903 Desert Ridge Circle
 Castle Rock, CO 80108
 COMMUNITY: Castle Oaks



Single Family



3200 SQFT



4 Beds



3/1 Baths



3 Car



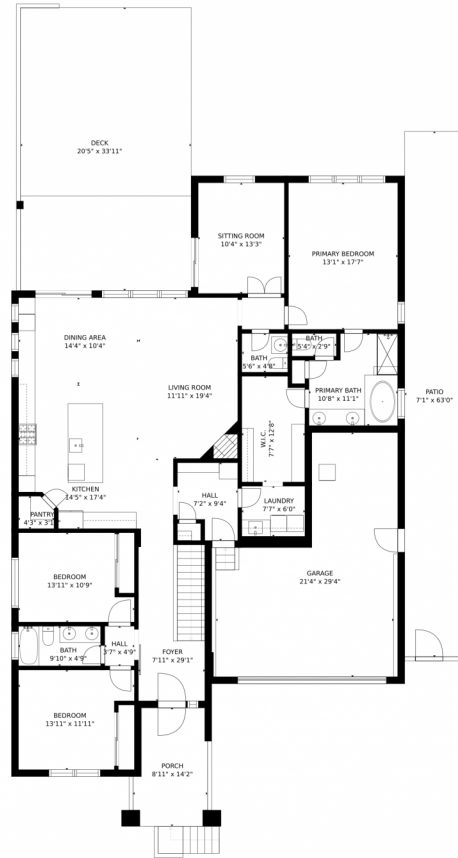
Brandi Wright
 720-947-9347
 brandi@whrealtyco.com



Scan code
 for more
 property
 details



3903 Desert Ridge Circle, Castle Rock, CO 80108 – Main Level



GROSS INTERNAL AREA
FLOOR 1: 1946 sq. ft. FLOOR 2: 2049 sq. ft.
EXCLUDED AREAS: GARAGE: 488 sq. ft.
DECK: 696 sq. ft. PATIO: 452 sq. ft.
PORCH: 115 sq. ft.
TOTAL: 3995 sq. ft.

MEASUREMENTS CALCULATED BY V1Photos.COM ARE DEEMED HIGHLY RELIABLE BUT NOT GUARANTEED.



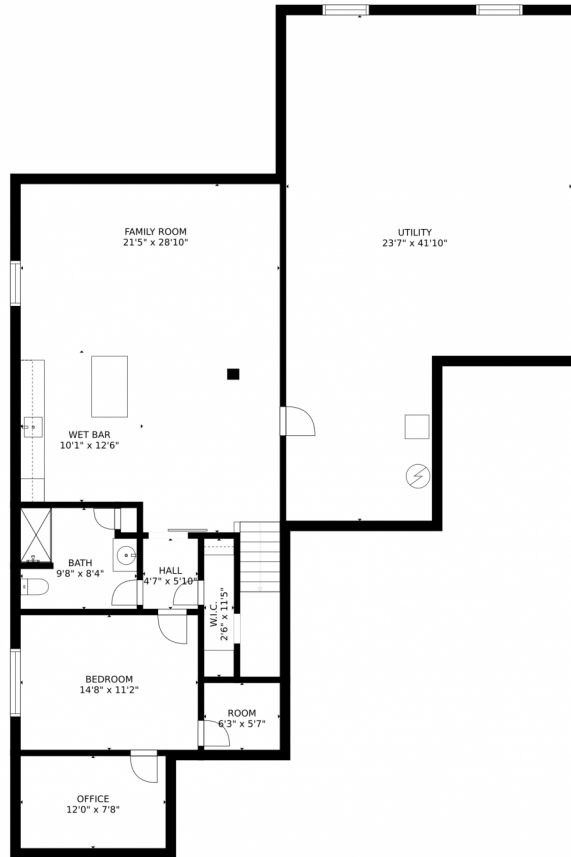
Disclaimer: Sizes and Dimensions are Approximate, Actual May Vary.



Brandi Wright
720-947-9347
brandi@whrealtyco.com



3903 Desert Ridge Circle, Castle Rock, CO 80108 – Lower Level



GROSS INTERNAL AREA
FLOOR 1: 1946 sq. ft. FLOOR 2: 2049 sq. ft.
EXCLUDED AREAS: , GARAGE: 488 sq. ft
DECK: 696 sq. ft. PATIO: 452 sq. ft
PORCH: 115 sq. ft
TOTAL: 3995 sq. ft

MEASUREMENTS CALCULATED BY V1Photos.COM ARE DEEMED HIGHLY RELIABLE BUT NOT GUARANTEED.



Disclaimer: Sizes and Dimensions are Approximate, Actual May Vary.



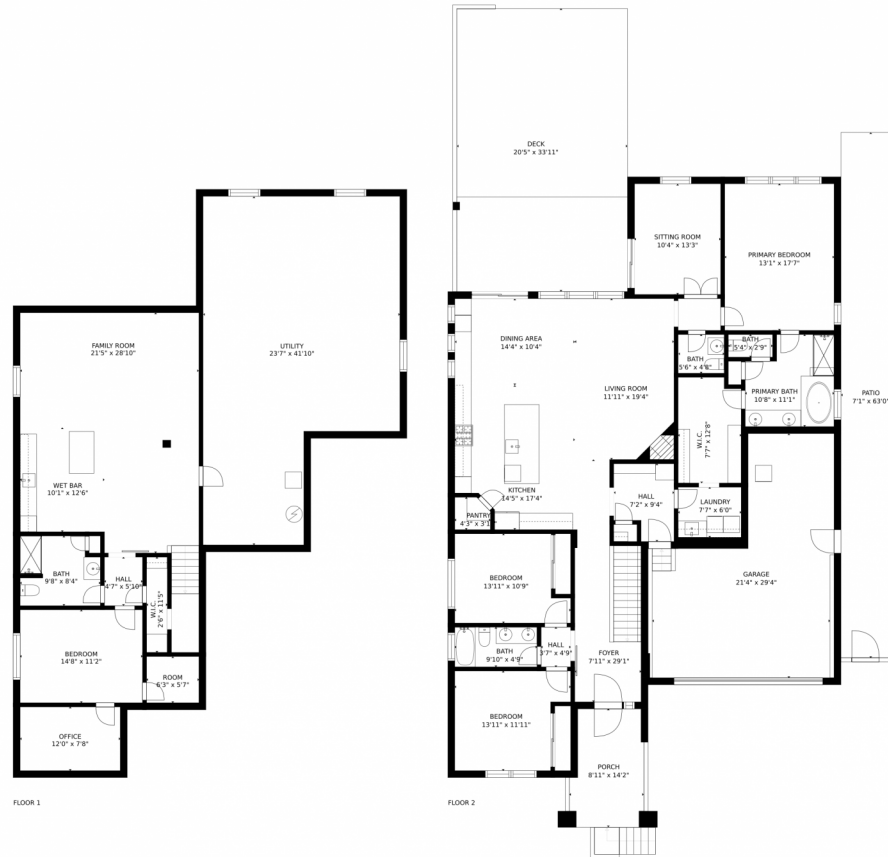
Brandi Wright
720-947-9347
brandi@whrealtyco.com



Scan code for more property details

A QR code is located to the right of the text. Below the text is a small icon of a smartphone with a green QR code on its screen.

3903 Desert Ridge Circle, Castle Rock, CO 80108 – All Levels



GROSS INTERNAL AREA
FLOOR 1: 1946 sq. ft, FLOOR 2: 2049 sq. ft
EXCLUDED AREAS: , GARAGE: 488 sq. ft
DECK: 696 sq. ft, PATIO: 452 sq. ft
PORCH: 115 sq. ft
TOTAL: 3995 sq. ft

MEASUREMENTS CALCULATED BY V1Photos.COM ARE DEEMED HIGHLY RELIABLE BUT NOT GUARANTEED.



Disclaimer: Sizes and Dimensions are Approximate, Actual May Vary.



Brandi Wright
720-947-9347
brandi@whrealtyco.com

