




 Single Family

 1709 SQFT

 3 Beds

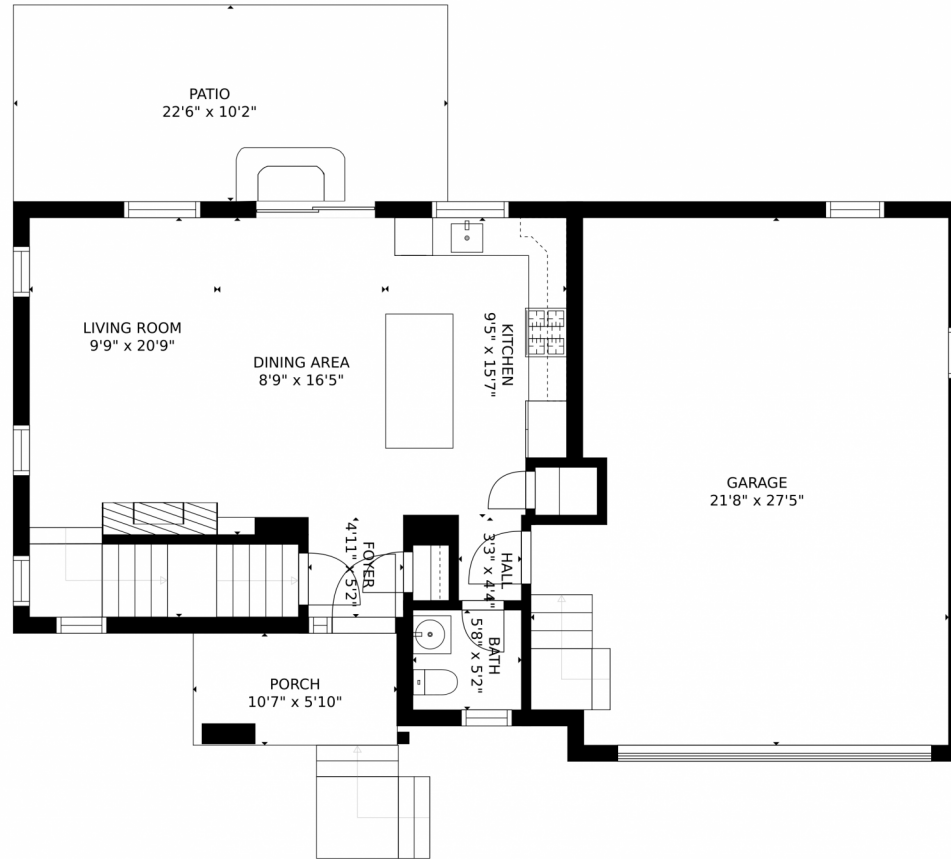
 3 Baths



Taylor Haas
303-665-7368
taylorh@coloradorpm.com
<https://www.coloradorpm.com/available-rental-properties-denver>



17182 East Cedar Gulch Drive, Parker, CO 80134 – Main Level



GROSS INTERNAL AREA
FLOOR 1: 5 sq. ft., FLOOR 2: 597 sq. ft.
FLOOR 3: 995 sq. ft., EXCLUDED AREAS:
UNFINISHED BASEMENT: 549 sq. ft., GARAGE: 541 sq. ft.
PATIO: 230 sq. ft., PORCH: 62 sq. ft.
TOTAL: 1597 sq. ft.
MEASUREMENTS CALCULATED BY V1Photos.com ARE DEEMED HIGHLY RELIABLE BUT NOT GUARANTEED.



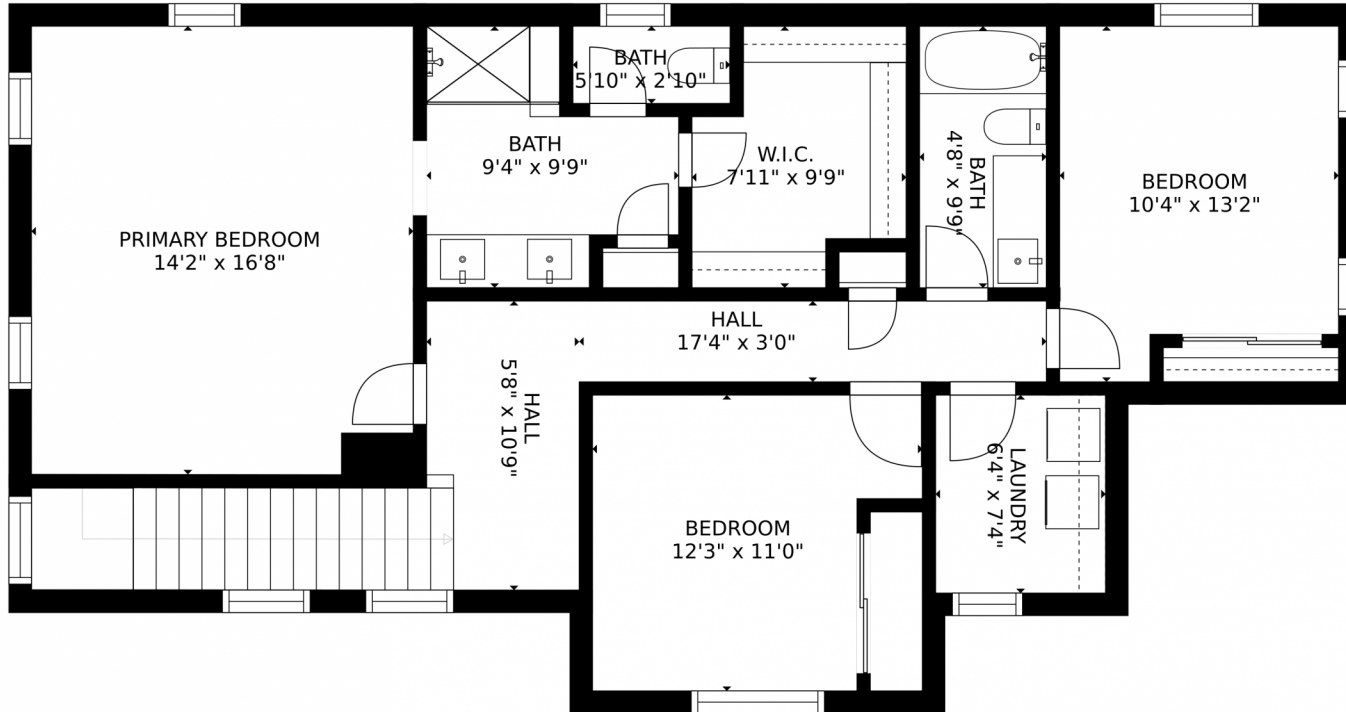
Disclaimer: Sizes and Dimensions are Approximate, Actual May Vary.



Taylor Haas
303-665-7368
taylorh@coloradorpm.com
<https://www.coloradorpm.com/available-rental-properties-denver>



17182 East Cedar Gulch Drive, Parker, CO 80134 — Upper Level



GROSS INTERNAL AREA
FLOOR 1: 5 sq. ft., FLOOR 2: 597 sq. ft.
FLOOR 3: 995 sq. ft., EXCLUDED AREAS:
UNFINISHED BASEMENT: 549 sq. ft., GARAGE: 541 sq. ft.
PATIO: 230 sq. ft., PORCH: 62 sq. ft.
TOTAL: 1597 sq. ft.
MEASUREMENTS CALCULATED BY V1Photos.COM ARE DEEMED HIGHLY RELIABLE BUT NOT GUARANTEED.

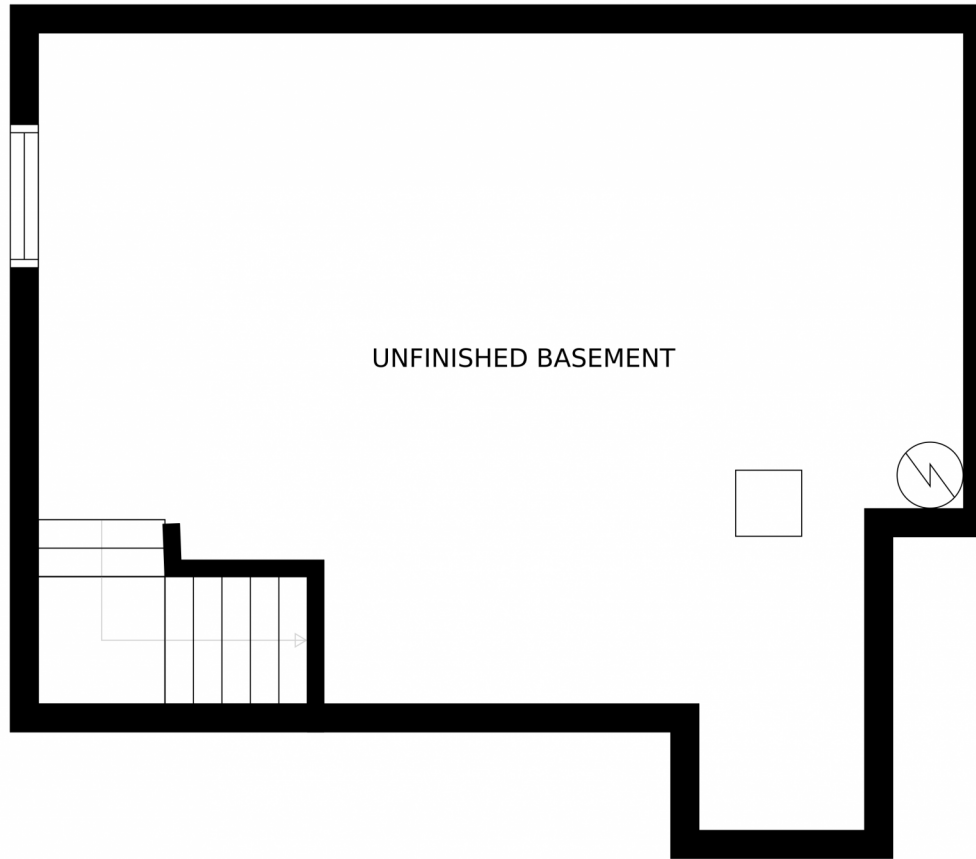


Disclaimer: Sizes and Dimensions are Approximate, Actual May Vary.



Taylor Haas
303-665-7368
taylorh@coloradorpm.com
<https://www.coloradorpm.com/available-rental-properties-denver>





GROSS INTERNAL AREA
FLOOR 1: 5 sq. ft., FLOOR 2: 597 sq. ft.
FLOOR 3: 995 sq. ft., EXCLUDED AREAS:
UNFINISHED BASEMENT: 549 sq. ft., GARAGE: 541 sq. ft.
PATIO: 230 sq. ft., PORCH: 62 sq. ft.
TOTAL: 1597 sq. ft.

MEASUREMENTS CALCULATED BY V1Photos.com ARE DEEMED HIGHLY RELIABLE BUT NOT GUARANTEED.



Disclaimer: Sizes and Dimensions are Approximate, Actual May Vary.



Taylor Haas

303-665-7368

taylorh@coloradorpm.com

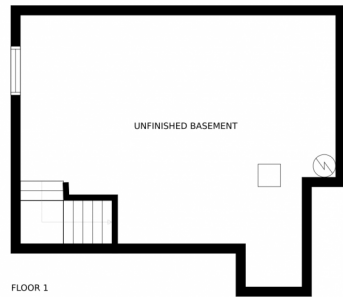
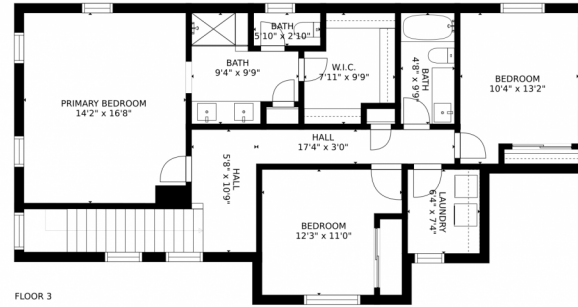
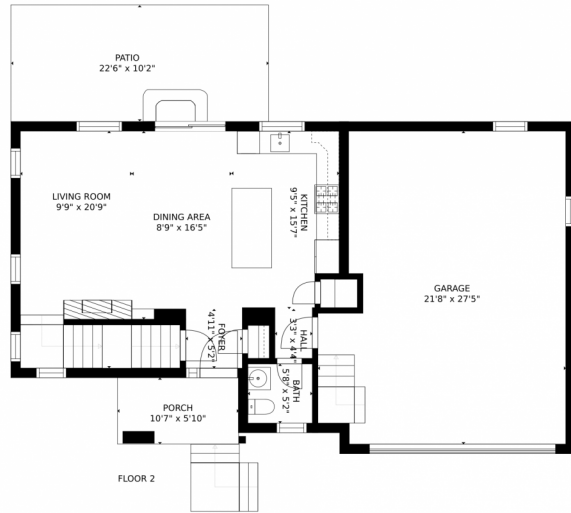
<https://www.coloradorpm.com/available-rental-properties-denver>



Scan code
for more
property
details



17182 East Cedar Gulch Drive, Parker, CO 80134 – All Levels



GROSS INTERNAL AREA
FLOOR 1: 5 sq. ft., FLOOR 2: 597 sq. ft.
FLOOR 3: 995 sq. ft., EXCLUDED AREAS:
UNFINISHED BASEMENT: 549 sq. ft., GARAGE: 541 sq. ft.
PATIO: 230 sq. ft., PORCH: 62 sq. ft.
TOTAL: 1597 sq. ft.

MEASUREMENTS CALCULATED BY V1Photos.COM ARE DEEMED HIGHLY RELIABLE BUT NOT GUARANTEED.



Disclaimer: Sizes and Dimensions are Approximate, Actual May Vary.



Taylor Haas

303-665-7368

taylorh@coloradorpm.com

<https://www.coloradorpm.com/available-rental-properties-denver>



Scan code
for more
property
details

