



334 West Golden Eagle Way
Pueblo West, CO 81007




 Single Family

 1800 SQFT

 4 Beds

 2 Baths

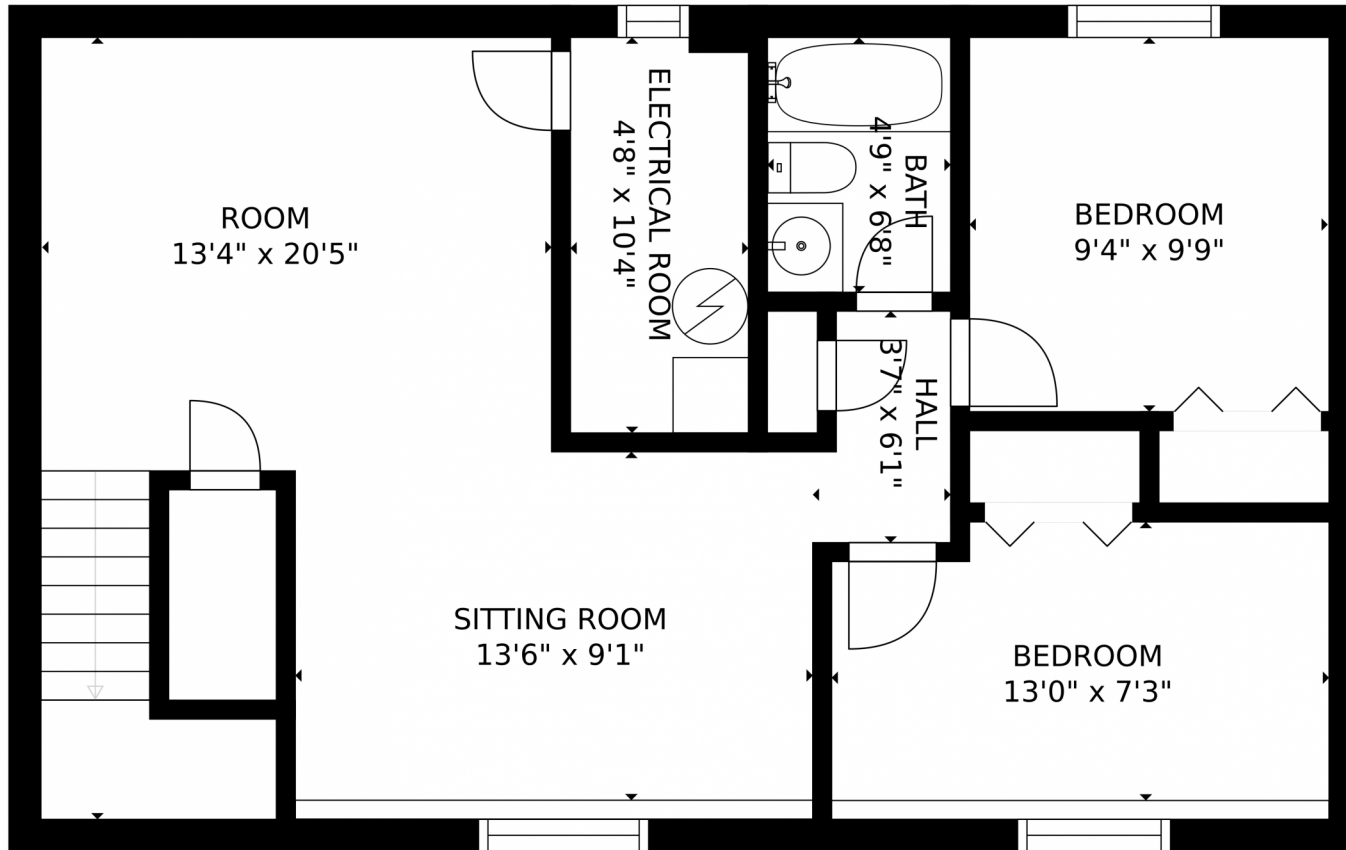
 2 Car

 0.29 Acre



Scan code for more property details





GROSS INTERNAL AREA
FLOOR 1: 686 sq. ft, FLOOR 2: 813 sq. ft
EXCLUDED AREAS: , GARAGE: 372 sq. ft
DECK: 90 sq. ft, PATIO: 146 sq. ft
TOTAL: 1499 sq. ft
MEASUREMENTS CALCULATED BY V1Photos.COM ARE DEEMED HIGHLY RELIABLE BUT NOT GUARANTEED.

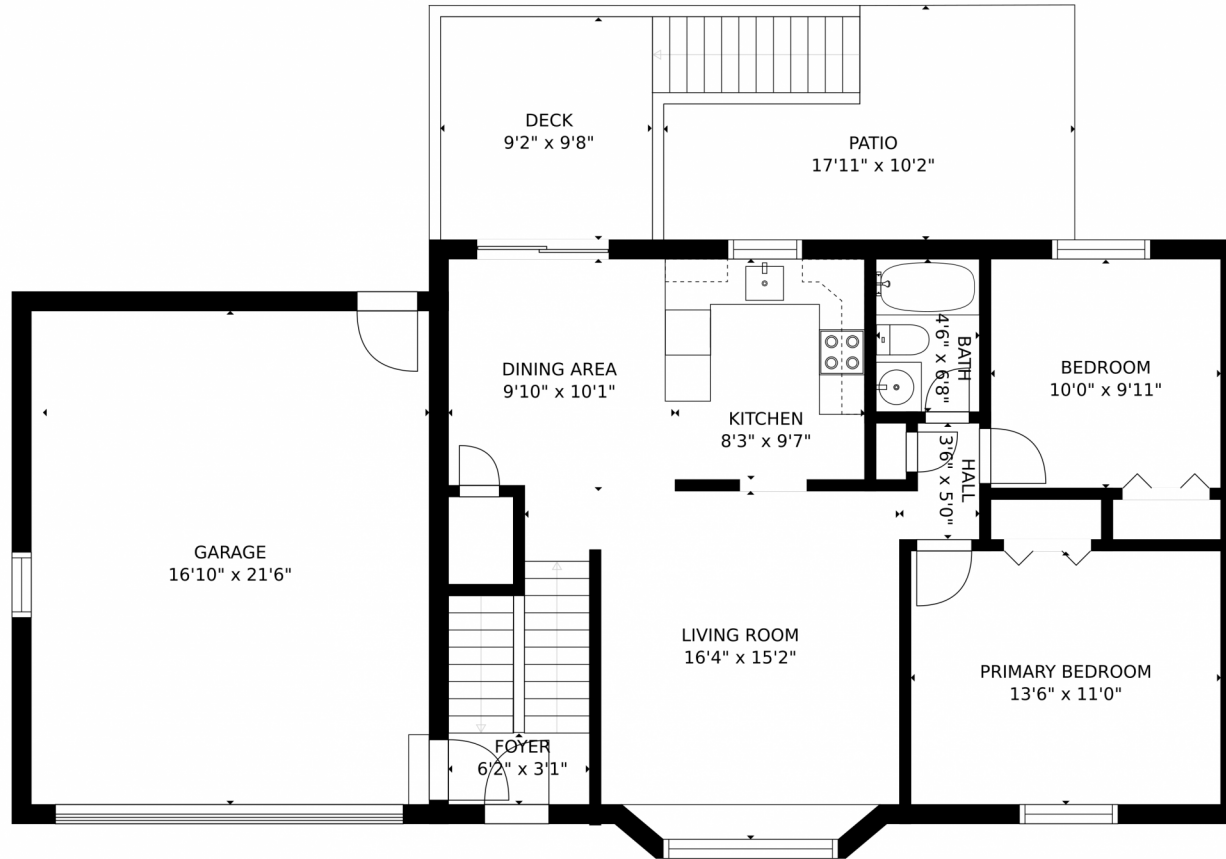
Disclaimer: Sizes and Dimensions are Approximate, Actual May Vary.



Scan code for more property details

A QR code is provided for scanning, accompanied by a small icon of a smartphone. The text 'Scan code for more property details' is positioned to the left of the QR code.

334 West Golden Eagle Way, Pueblo West, CO 81007 – Upper Level



GROSS INTERNAL AREA
FLOOR 1: 686 sq. ft, FLOOR 2: 813 sq. ft
EXCLUDED AREAS: , GARAGE: 372 sq. ft
DECK: 90 sq. ft, PATIO: 146 sq. ft
TOTAL: 1499 sq. ft
MEASUREMENTS CALCULATED BY V1Photos.com ARE DEEMED HIGHLY RELIABLE BUT NOT GUARANTEED.



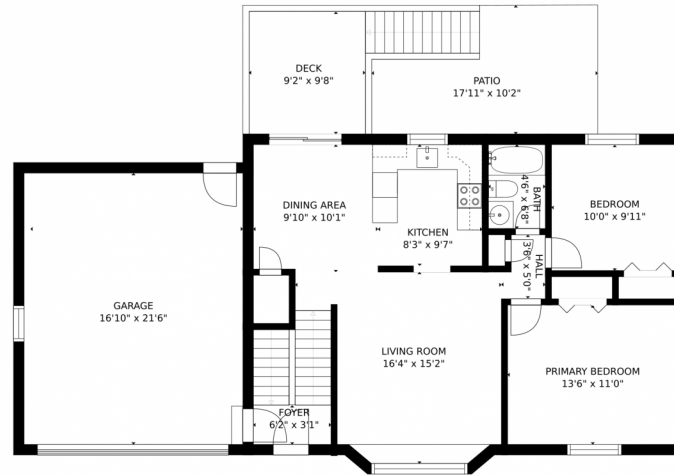
Disclaimer: Sizes and Dimensions are Approximate, Actual May Vary.



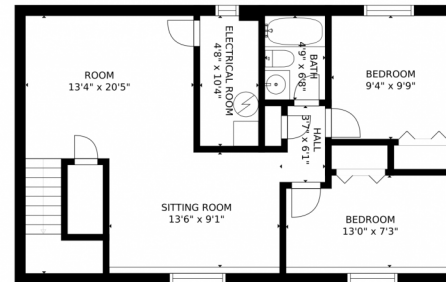
Scan code for more property details

A QR code is provided for scanning to access more property details. To the left of the QR code is a small icon of a smartphone displaying a list of items.

334 West Golden Eagle Way, Pueblo West, CO 81007 – All Levels



FLOOR 2



FLOOR 1

GROSS INTERNAL AREA
FLOOR 1: 686 sq. ft, FLOOR 2: 813 sq. ft
EXCLUDED AREAS: , GARAGE: 372 sq. ft
DECK: 90 sq. ft, PATIO: 146 sq. ft
TOTAL: 1499 sq. ft

MEASUREMENTS CALCULATED BY V1PHOTOS.COM ARE DEEMED HIGHLY RELIABLE BUT NOT GUARANTEED.



Disclaimer: Sizes and Dimensions are Approximate, Actual May Vary.



Scan code
for more
property
details