



Single Family



5721 SQFT



6 Beds



5 Baths



3 Car



0.29 Acre

PROPERTY DETAILS

Location! Location! Location! End of cul-de-sac backs up to greenbelt, Wow! Luxury and sophistication come to mind when you walk in this gorgeous ranch home in Castle Pines. The kitchen is amazing with gorgeous quartz counters and Monogram appliances - Gas range, large walk-in pantry, Butler's pantry with wine cooler, and huge island w/eating bar. Come see the spacious family room with custom stone fireplace inlay, expansive hardwood flooring and coffered ceilings. The large master suite has a private entrance to the back yard Trex decking, spa bath features soaking tub, separate shower, and dual bowl vanity. Also on the main level are 2 additional large bedrooms and 2 more designer baths. The full finished basement is worth touring with a bonus office, enormous game area with gas fireplace, full bar with refrigerator and dishwasher, 3 additional large bedrooms and 2 full baths. The guest suite in the basement offers a custom steam shower you don't want to miss, and the workout room is off the covered patio. There is additional unfinished storage space in the basement as well as a holiday closet under the stairs perfect for seasonal décor. The large backyard is so relaxing with the stamped patio, custom firepit, bubbling water feature and new hot tub, you can relax the night away. Extra features include the South facing drive to help melt winter snow, Epoxy garage floor, Garage workbench and storage cabinetry, three overhead garage 4x8 storage shelves,



Nicole Rendaci

720-724-7030

nicole.Rendaci@windermere.com



Scan code
for more
property
details



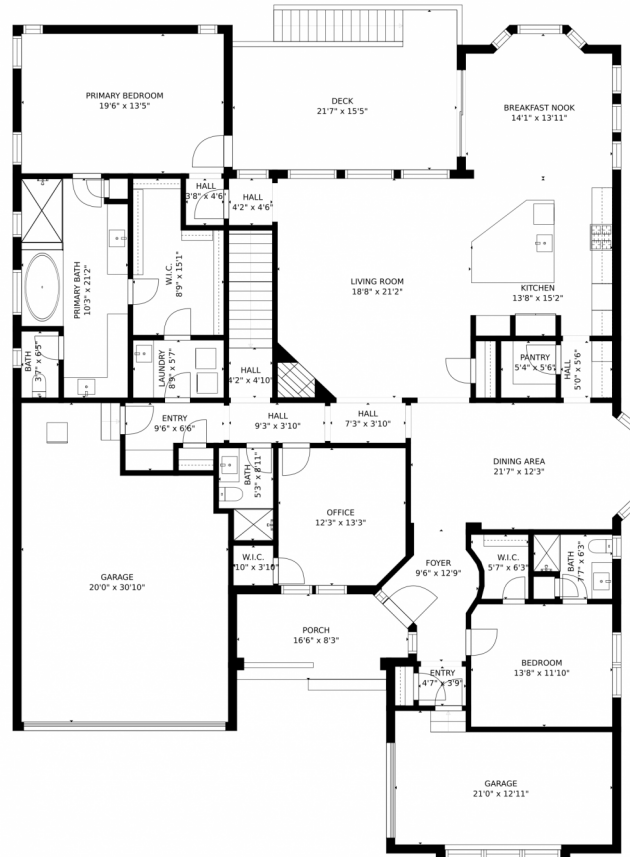
both garages dry walled and painted, 220 V, Nest Smart thermostat. With easy and quick access to I-25 and shopping, this Colorado home has it all! See more photos, floorplans and videos at <https://v1tours.com/listing/43925>



Nicole Rendaci
720-724-7030
nicole.Rendaci@windermere.com



6903 Murphy Creek Lane, Castle Pines, CO 80108 – Main Level



GROSS INTERNAL AREA
FLOOR 1: 2483 sq. ft, FLOOR 2: 2682 sq. ft
EXCLUDED AREAS: , PATIO: 917 sq. ft
GARAGE: 784 sq. ft, DECK: 276 sq. ft
PORCH: 126 sq. ft
TOTAL: 5164 sq. ft
MEASUREMENTS CALCULATED BY V1Photos.com ARE DEEMED HIGHLY RELIABLE BUT NOT GUARANTEED.



Disclaimer: Sizes and Dimensions are Approximate, Actual May Vary.

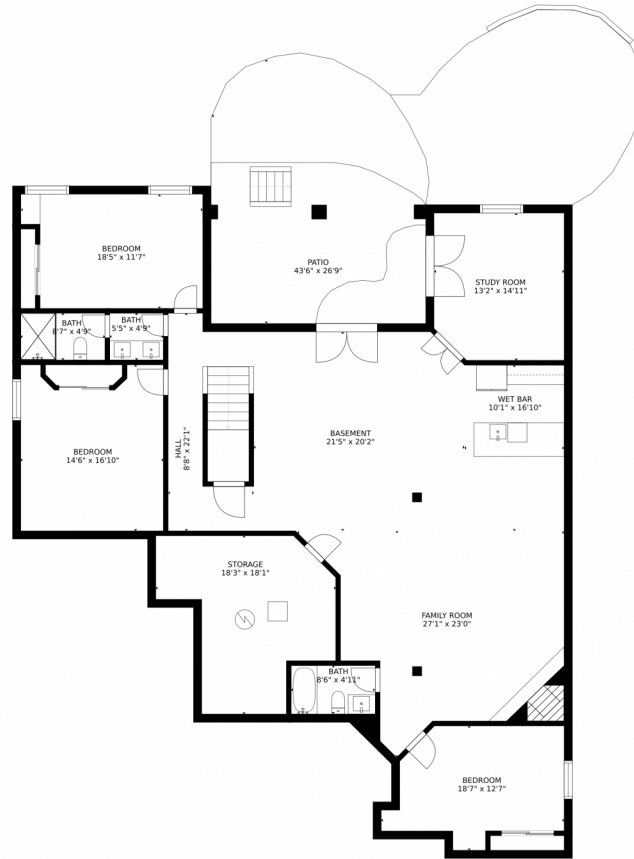


Nicole Rendaci
720-724-7030
nicole.Rendaci@windermere.com



Scan code
for more
property
details

6903 Murphy Creek Lane, Castle Pines, CO 80108 – Lower Level



GROSS INTERNAL AREA
FLOOR 1: 2483 sq. ft, FLOOR 2: 2682 sq. ft
EXCLUDED AREAS: , PATIO: 917 sq. ft
GARAGE: 784 sq. ft, DECK: 276 sq. ft
PORCH: 126 sq. ft
TOTAL: 5164 sq. ft

MEASUREMENTS CALCULATED BY V1Photos.COM ARE DEEMED HIGHLY RELIABLE BUT NOT GUARANTEED.

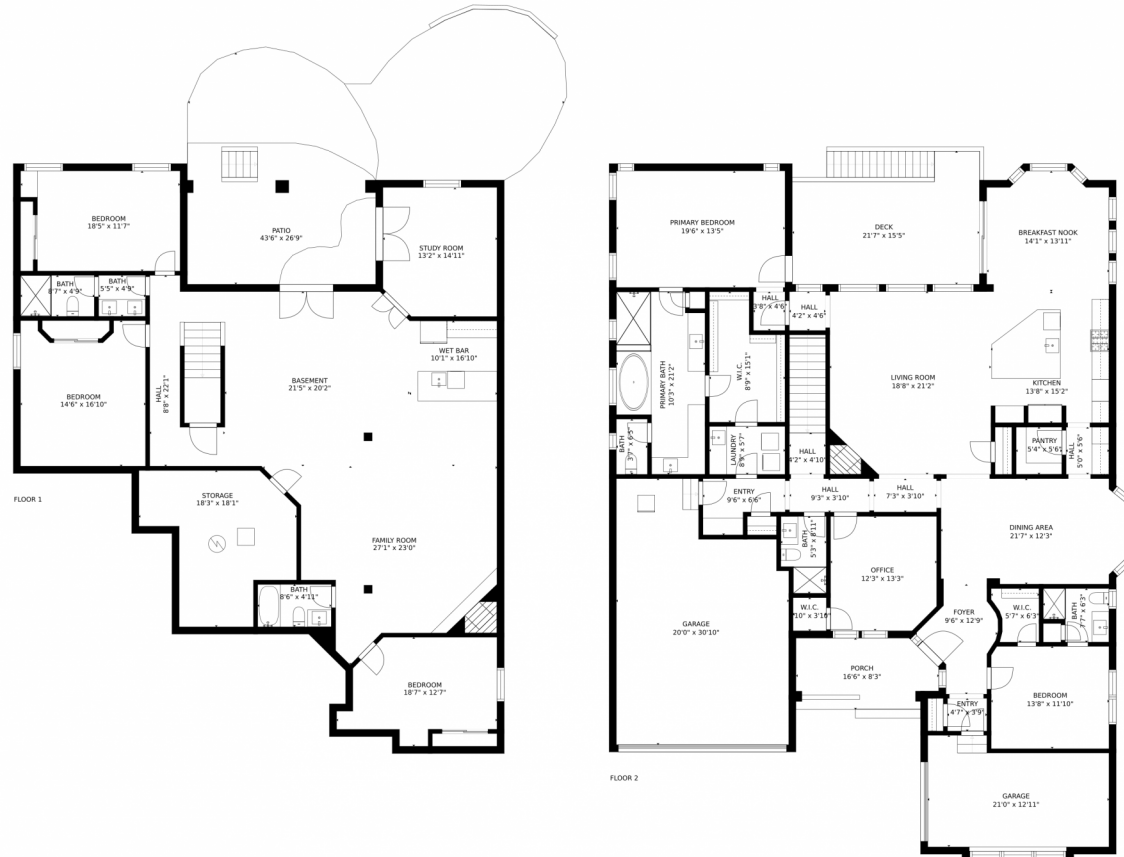
Disclaimer: Sizes and Dimensions are Approximate, Actual May Vary.



Nicole Rendaci
720-724-7030
nicole.Rendaci@windermere.com



6903 Murphy Creek Lane, Castle Pines, CO 80108 – All Levels



GROSS INTERNAL AREA
FLOOR 1: 2483 sq. ft. FLOOR 2: 2682 sq. ft.
EXCLUDED AREAS: , PATIO: 917 sq. ft
GARAGE: 784 sq. ft, DECK: 276 sq. ft
PORCH: 126 sq. ft
TOTAL: 5164 sq. ft

MEASUREMENTS CALCULATED BY V1Photos.COM ARE DEEMED HIGHLY RELIABLE BUT NOT GUARANTEED.



Disclaimer: Sizes and Dimensions are Approximate, Actual May Vary.



Nicole Rendaci
720-724-7030
nicole.Rendaci@windermere.com



Scan code for more property details