



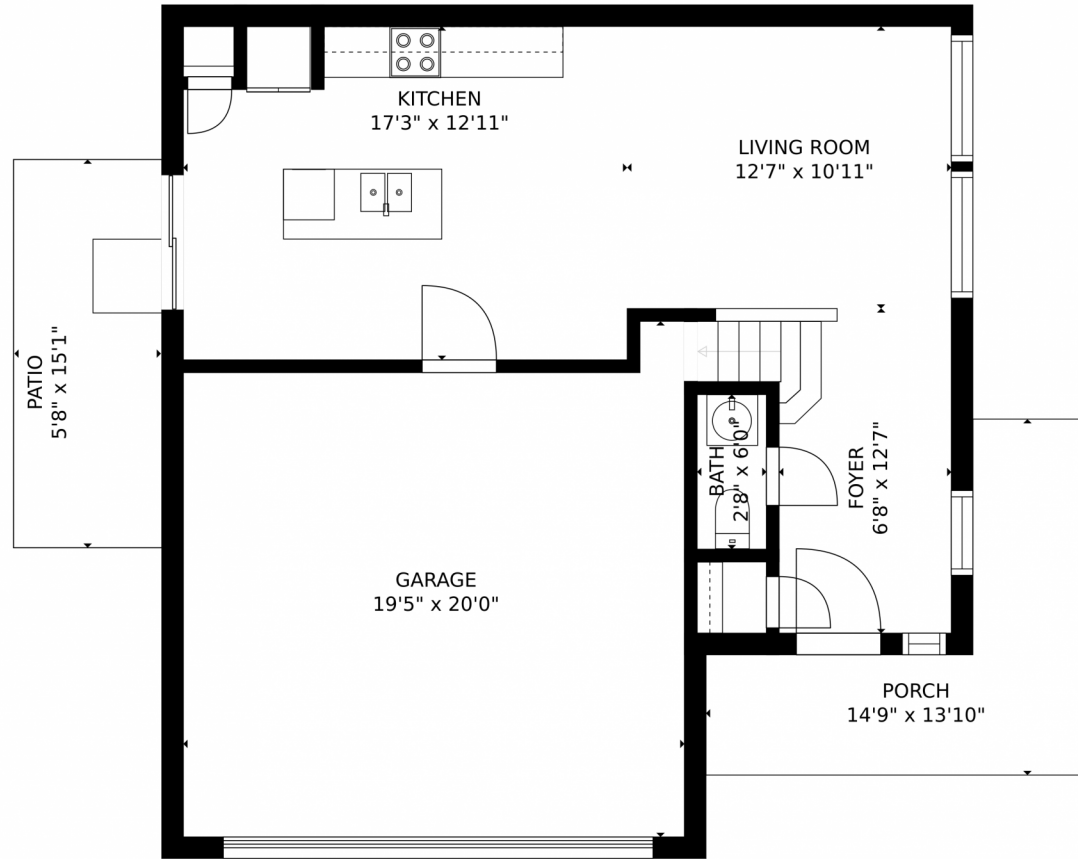
 Single Family  1160 SQFT  2 Beds  2/1 Baths  2 Car  0.07 Acre



**Gwen Hamm**  
720-530-5489  
gwenhamm@kw.com  
<https://gwenhamm.kw.com/>



17930 E 54th Avenue, Denver, CO 80249 – Main Level



GROSS INTERNAL AREA  
FLOOR 1: 488 sq. ft, FLOOR 2: 571 sq. ft  
EXCLUDED AREAS: , GARAGE: 353 sq. ft  
PATIO: 87 sq. ft, PORCH: 109 sq. ft  
TOTAL: 1059 sq. ft  
MEASUREMENTS CALCULATED BY V1Photos.com ARE DEEMED HIGHLY RELIABLE BUT NOT GUARANTEED.



Disclaimer: Sizes and Dimensions are Approximate, Actual May Vary.

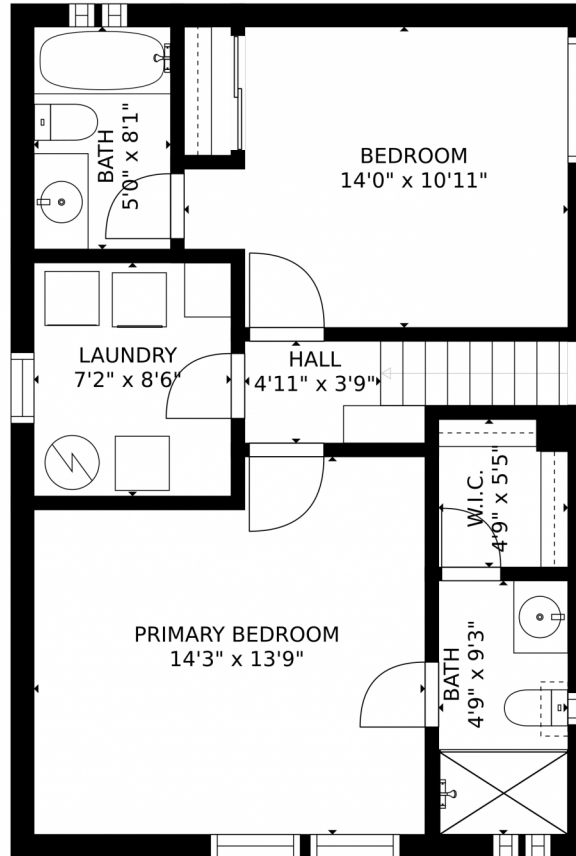


**Gwen Hamm**  
720-530-5489  
gwenhamm@kw.com  
<https://gwenhamm.kw.com/>



Scan code  
for more  
property  
details





GROSS INTERNAL AREA  
FLOOR 1: 488 sq. ft, FLOOR 2: 571 sq. ft  
EXCLUDED AREAS: , GARAGE: 353 sq. ft  
PATIO: 87 sq. ft, PORCH: 109 sq. ft  
TOTAL: 1059 sq. ft  
MEASUREMENTS CALCULATED BY V1Photos.COM ARE DEEMED HIGHLY RELIABLE BUT NOT GUARANTEED.



Disclaimer: Sizes and Dimensions are Approximate, Actual May Vary.



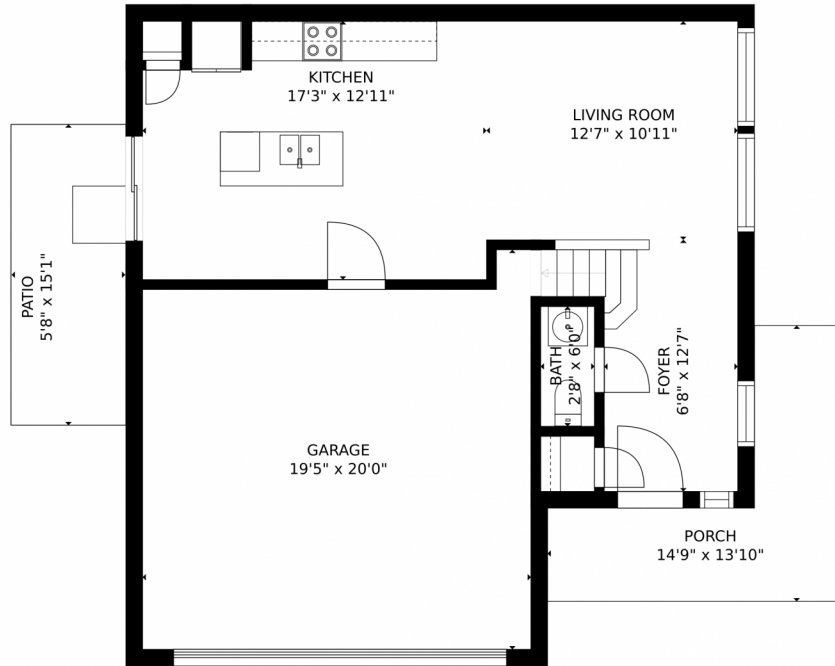
**Gwen Hamm**  
720-530-5489  
gwenhamm@kw.com  
<https://gwenhamm.kw.com/>



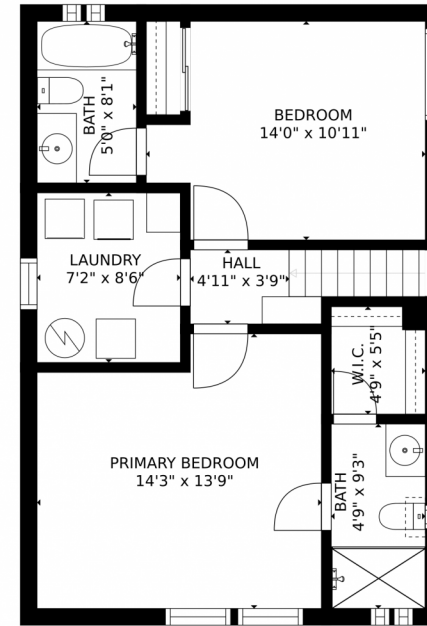
Scan code  
for more  
property  
details



# 17930 E 54th Avenue, Denver, CO 80249 – All Levels



FLOOR 1



FLOOR 2

GROSS INTERNAL AREA  
FLOOR 1: 488 sq. ft., FLOOR 2: 571 sq. ft.  
EXCLUDED AREAS: GARAGE: 353 sq. ft.  
PATIO: 87 sq. ft., PORCH: 109 sq. ft.  
TOTAL: 1059 sq. ft.

MEASUREMENTS CALCULATED BY V1PHOTOS.COM ARE DEEMED HIGHLY RELIABLE BUT NOT GUARANTEED.



Disclaimer: Sizes and Dimensions are Approximate, Actual May Vary.



**Gwen Hamm**  
720-530-5489  
gwenhamm@kw.com  
<https://gwenhamm.kw.com/>



Scan code  
for more  
property  
details

