




 Single Family

 3080 SQFT

 3 Beds

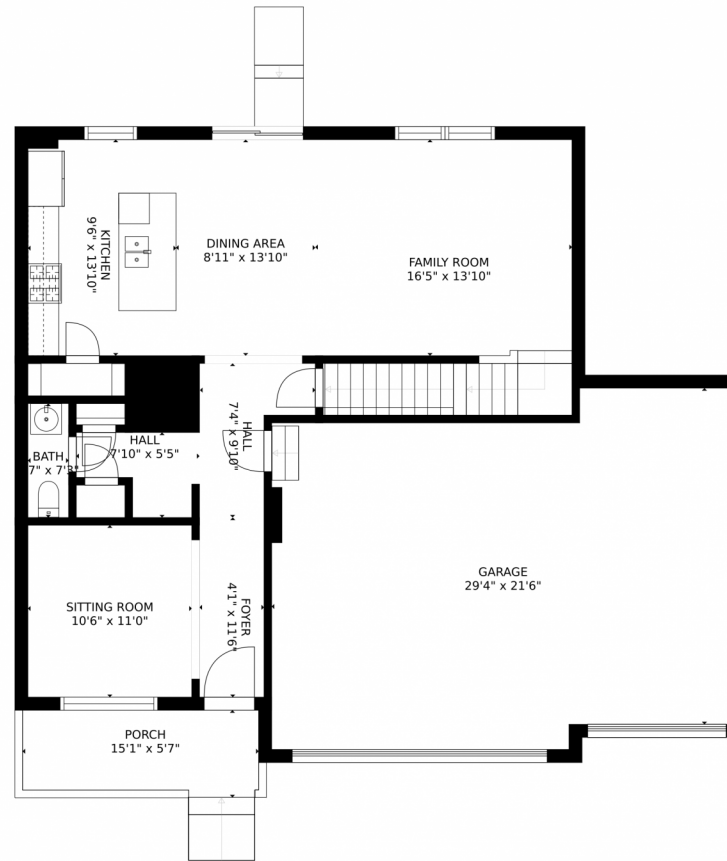
 2 Baths



Taylor Haas
303-665-7368
taylorh@coloradorpm.com
<https://www.coloradorpm.com/available-rental-properties-denver>



1543 Sun River Road, Berthoud, CO 80513 – Main Level



GROSS INTERNAL AREA
FLOOR 1: 6 sq. ft, FLOOR 2: 884 sq. ft
FLOOR 3: 1250 sq. ft, EXCLUDED AREAS:
UNFINISHED BASEMENT: 815 sq. ft, GARAGE: 616 sq. ft
PORCH: 96 sq. ft
TOTAL: 2140 sq. ft

MEASUREMENTS CALCULATED BY V1Photos.com ARE DEEMED HIGHLY RELIABLE BUT NOT GUARANTEED.



Disclaimer: Sizes and Dimensions are Approximate, Actual May Vary.



Taylor Haas

303-665-7368

taylorh@coloradorpm.com

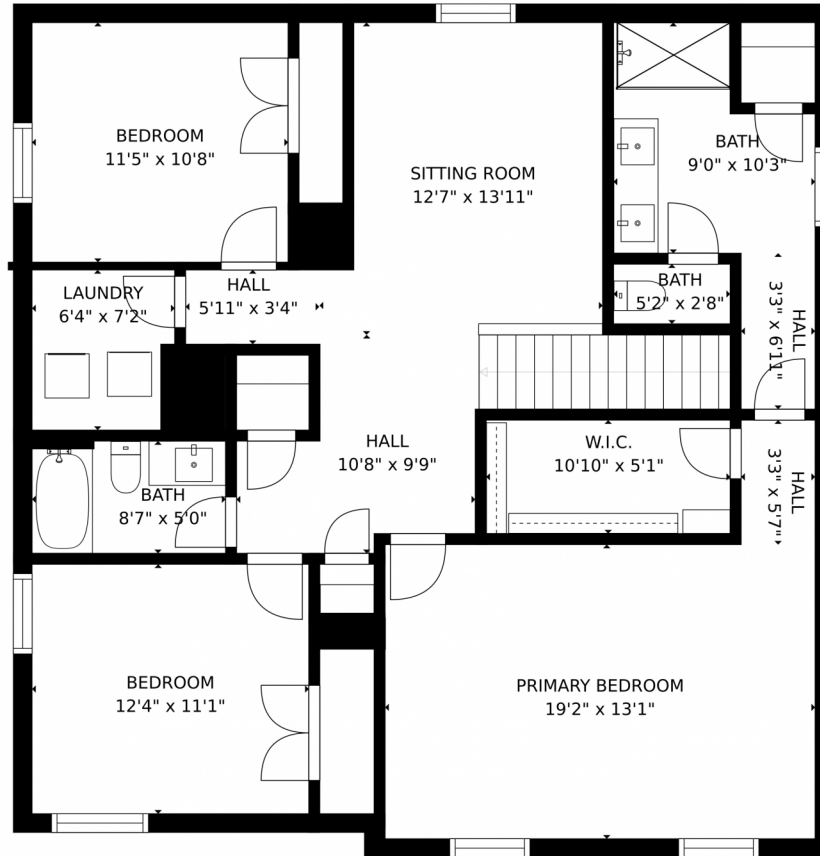
<https://www.coloradorpm.com/available-rental-properties-denver>



Scan code
for more
property
details



1543 Sun River Road, Berthoud, CO 80513 – Upper Level



GROSS INTERNAL AREA
FLOOR 1: 6 sq. ft, FLOOR 2: 884 sq. ft
FLOOR 3: 1250 sq. ft, EXCLUDED AREAS:
UNFINISHED BASEMENT: 815 sq. ft, GARAGE: 616 sq. ft
PORCH: 96 sq. ft
TOTAL: 2140 sq. ft
MEASUREMENTS CALCULATED BY V1Photos.com ARE DEEMED HIGHLY RELIABLE BUT NOT GUARANTEED.



Disclaimer: Sizes and Dimensions are Approximate, Actual May Vary.



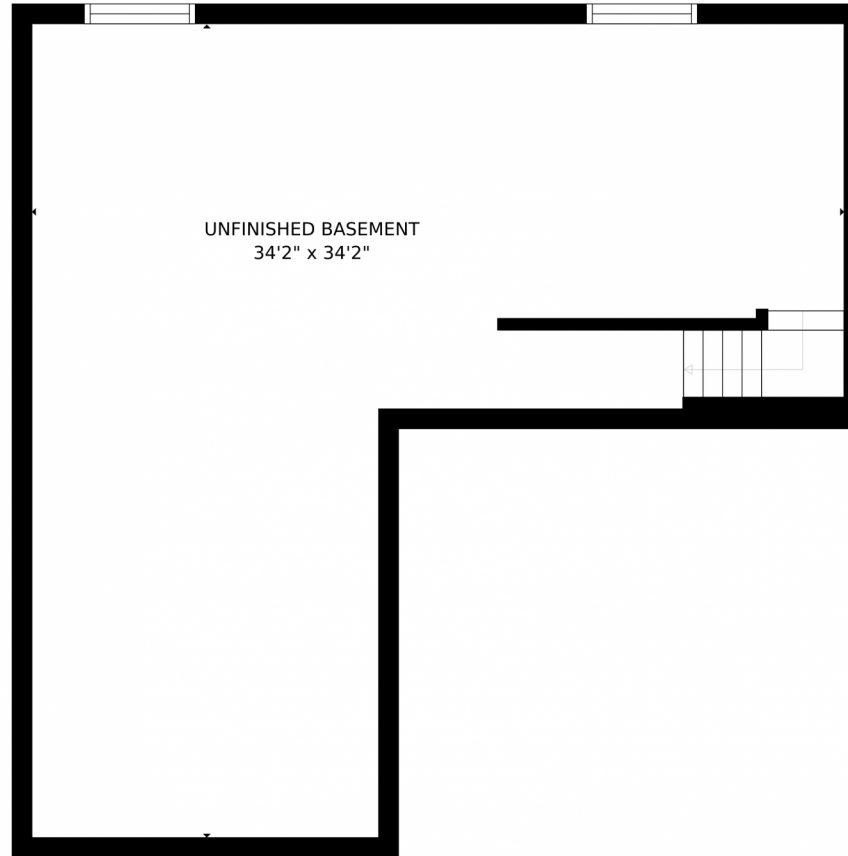
Taylor Haas
303-665-7368
taylorh@coloradorpm.com
<https://www.coloradorpm.com/available-rental-properties-denver>



Scan code
for more
property
details



1543 Sun River Road, Berthoud, CO 80513 – Lower Level



GROSS INTERNAL AREA
FLOOR 1: 6 sq. ft, FLOOR 2: 884 sq. ft
FLOOR 3: 1250 sq. ft, EXCLUDED AREAS:
UNFINISHED BASEMENT: 815 sq. ft, GARAGE: 616 sq. ft
PORCH: 96 sq. ft
TOTAL: 2140 sq. ft
MEASUREMENTS CALCULATED BY V1Photos.COM ARE DEEMED HIGHLY RELIABLE BUT NOT GUARANTEED.



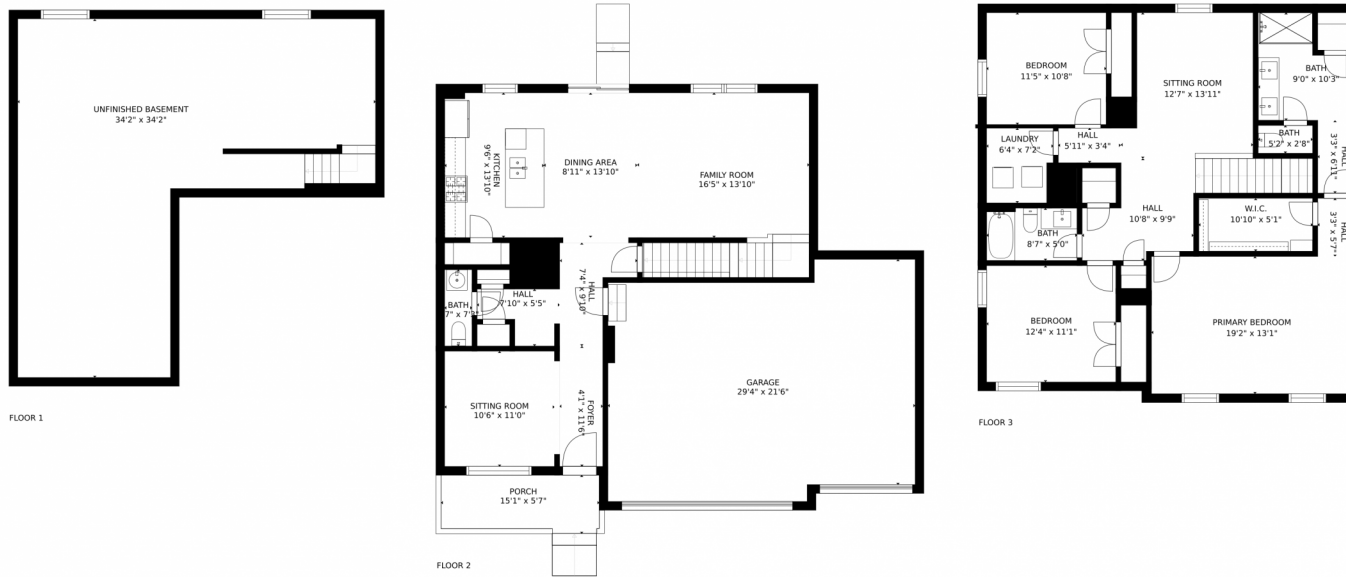
Disclaimer: Sizes and Dimensions are Approximate, Actual May Vary.



Taylor Haas
303-665-7368
taylorh@coloradorpm.com
<https://www.coloradorpm.com/available-rental-properties-denver>



1543 Sun River Road, Berthoud, CO 80513 – All Levels



GROSS INTERNAL AREA
FLOOR 1: 6 sq. ft, FLOOR 2: 884 sq. ft
FLOOR 3: 1250 sq. ft, EXCLUDED AREAS:
UNFINISHED BASEMENT: 815 sq. ft, GARAGE: 616 sq. ft
PORCH: 96 sq. ft
TOTAL: 2140 sq. ft
MEASUREMENTS CALCULATED BY V1Photos.COM ARE DEEMED HIGHLY RELIABLE BUT NOT GUARANTEED.



Disclaimer: Sizes and Dimensions are Approximate, Actual May Vary.



Taylor Haas
303-665-7368
taylorh@coloradorpm.com
<https://www.coloradorpm.com/available-rental-properties-denv>



Scan code
for more
property
details

