


 Single Family

 2442 SQFT

 4 Beds

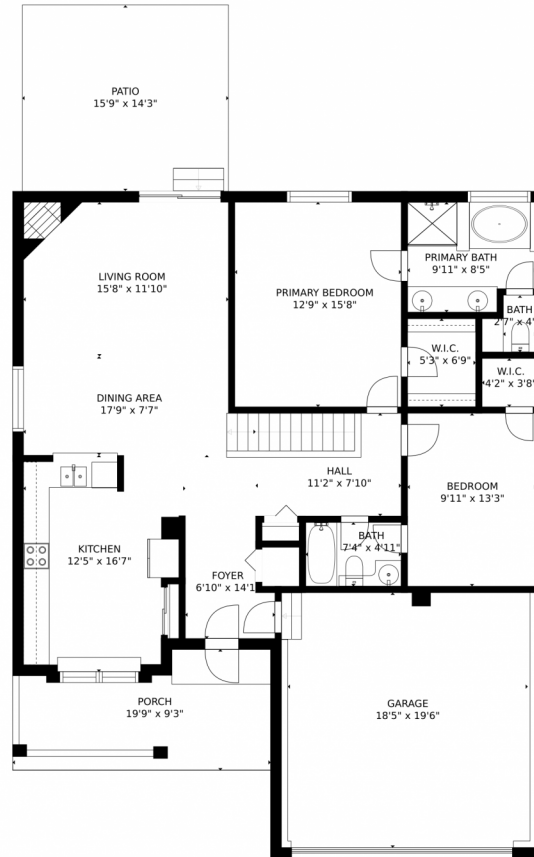
 3 Baths



Taylor Haas
303-665-7368
taylorh@coloradorpm.com
<https://www.coloradorpm.com/available-rental-properties-denver>



4339 Apache Plume Drive, Colorado Springs, CO 80920 – Main Level



GROSS INTERNAL AREA
FLOOR 1: 972 sq. ft. FLOOR 2: 1258 sq. ft.
EXCLUDED AREAS: , UNFINISHED BASEMENT: 121 sq. ft.
GARAGE: 382 sq. ft. PATIO: 226 sq. ft.
PORCH: 154 sq. ft.
TOTAL: 2230 sq. ft.

MEASUREMENTS CALCULATED BY V1Photos.COM ARE DEEMED HIGHLY RELIABLE BUT NOT GUARANTEED.



Disclaimer: Sizes and Dimensions are Approximate, Actual May Vary.



Taylor Haas

303-665-7368

taylorh@coloradorpm.com

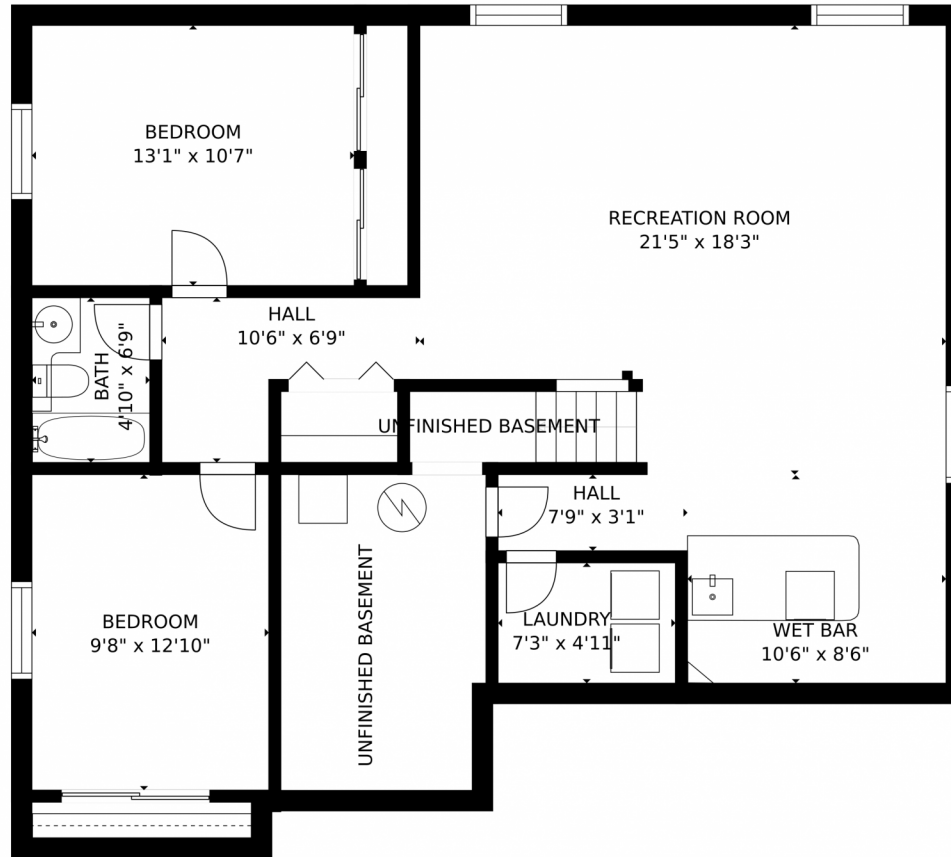
<https://www.coloradorpm.com/available-rental-properties-denver>



Scan code
for more
property
details



4339 Apache Plume Drive, Colorado Springs, CO 80920 – Basement



GROSS INTERNAL AREA
FLOOR 1: 972 sq. ft, FLOOR 2: 1258 sq. ft
EXCLUDED AREAS: , UNFINISHED BASEMENT: 121 sq. ft
GARAGE: 382 sq. ft, PATIO: 226 sq. ft
PORCH: 154 sq. ft
TOTAL: 2230 sq. ft

MEASUREMENTS CALCULATED BY V1Photos.com ARE DEEMED HIGHLY RELIABLE BUT NOT GUARANTEED.



Disclaimer: Sizes and Dimensions are Approximate, Actual May Vary.



Taylor Haas

303-665-7368

taylorh@coloradorpm.com

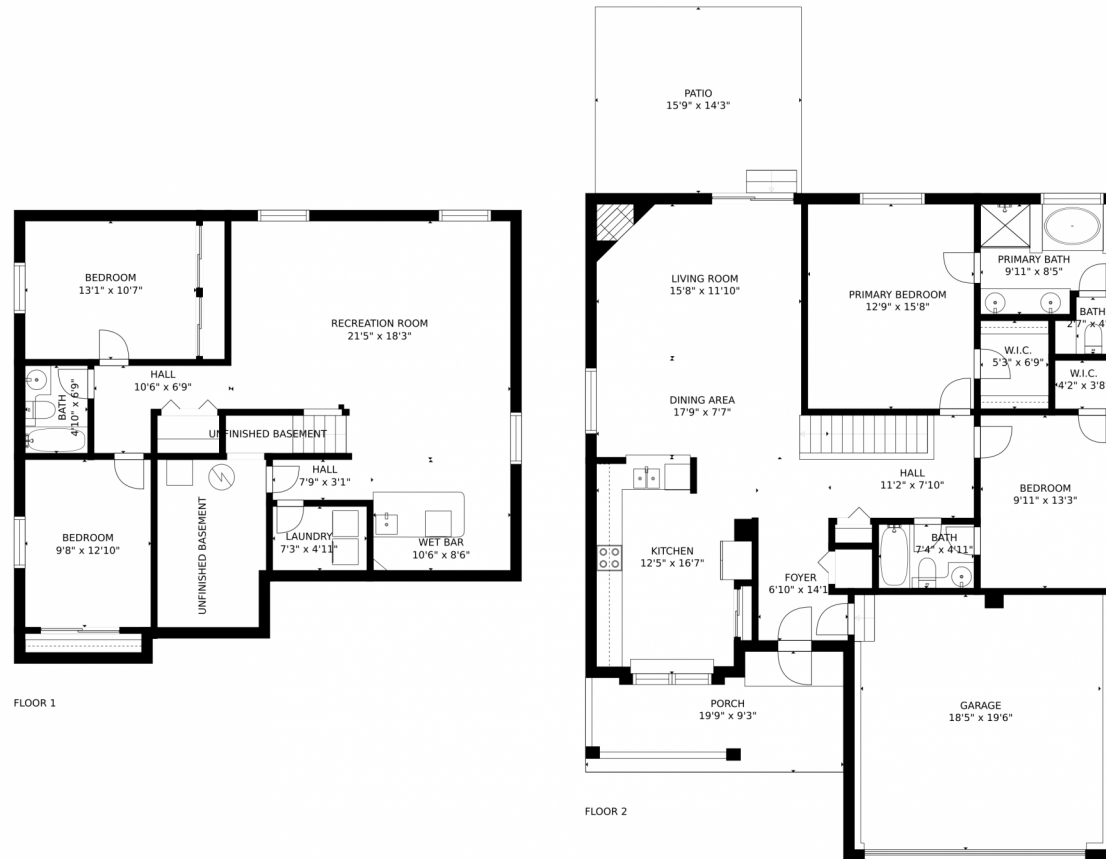
<https://www.coloradorpm.com/available-rental-properties-denver>



Scan code
for more
property
details



4339 Apache Plume Drive, Colorado Springs, CO 80920 – All Levels



FLOOR 1

FLOOR 2

GROSS INTERNAL AREA
FLOOR 1: 972 sq. ft, FLOOR 2: 1258 sq. ft
EXCLUDED AREAS: , UNFINISHED BASEMENT: 121 sq. ft
GARAGE: 382 sq. ft, PATIO: 226 sq. ft
PORCH: 154 sq. ft
TOTAL: 2230 sq. ft

MEASUREMENTS CALCULATED BY V1Photos.COM ARE DEEMED HIGHLY RELIABLE BUT NOT GUARANTEED.



Disclaimer: Sizes and Dimensions are Approximate, Actual May Vary.



Taylor Haas

303-665-7368

taylorh@coloradorpm.com

<https://www.coloradorpm.com/available-rental-properties-denver>



Scan code
for more
property
details

