




4510 South Lipan Street  
Englewood, CO 80110

MLS # 4041487




 Single Family

 1040 SQFT

 3 Beds

 1 Baths

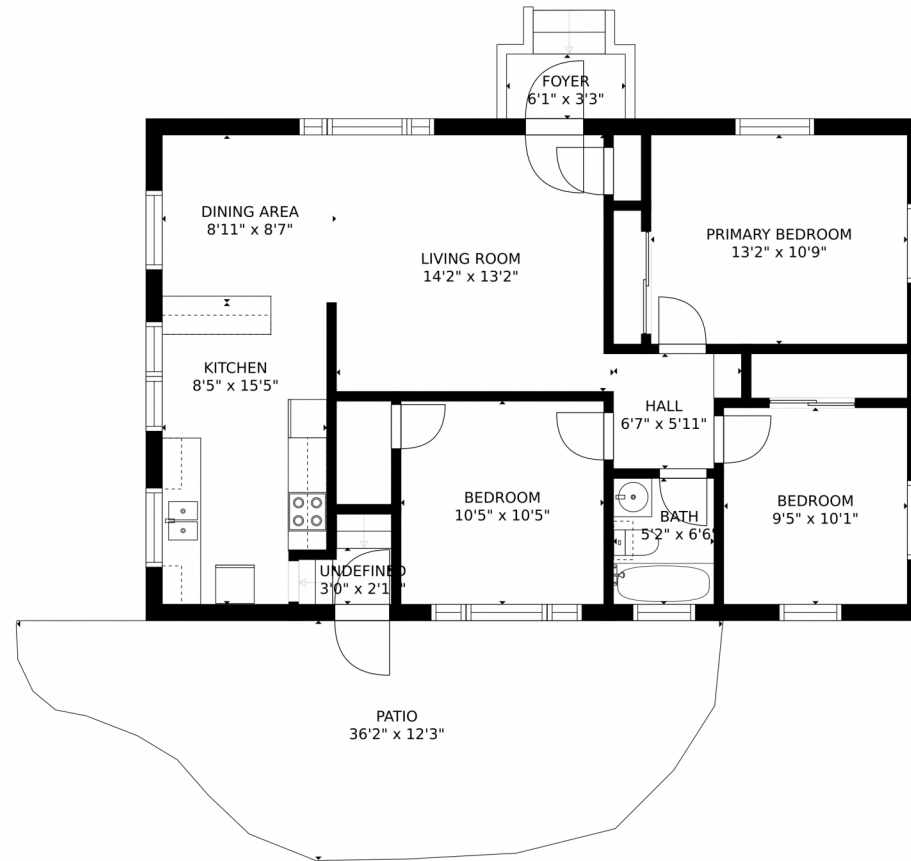
 0.21 Acre



**Annie Schneider**  
303-548-5299  
annie@annieschneider.com



# 4510 South Lipan Street, Englewood, CO 80110 – Main Level



GROSS INTERNAL AREA  
FLOOR 1: 919 sq. ft. FLOOR 2: 939 sq. ft  
EXCLUDED AREAS: , PATIO: 338 sq. ft  
TOTAL: 1859 sq. ft  
MEASUREMENTS CALCULATED BY V1Photos.COM ARE DEEMED HIGHLY RELIABLE BUT NOT GUARANTEED.



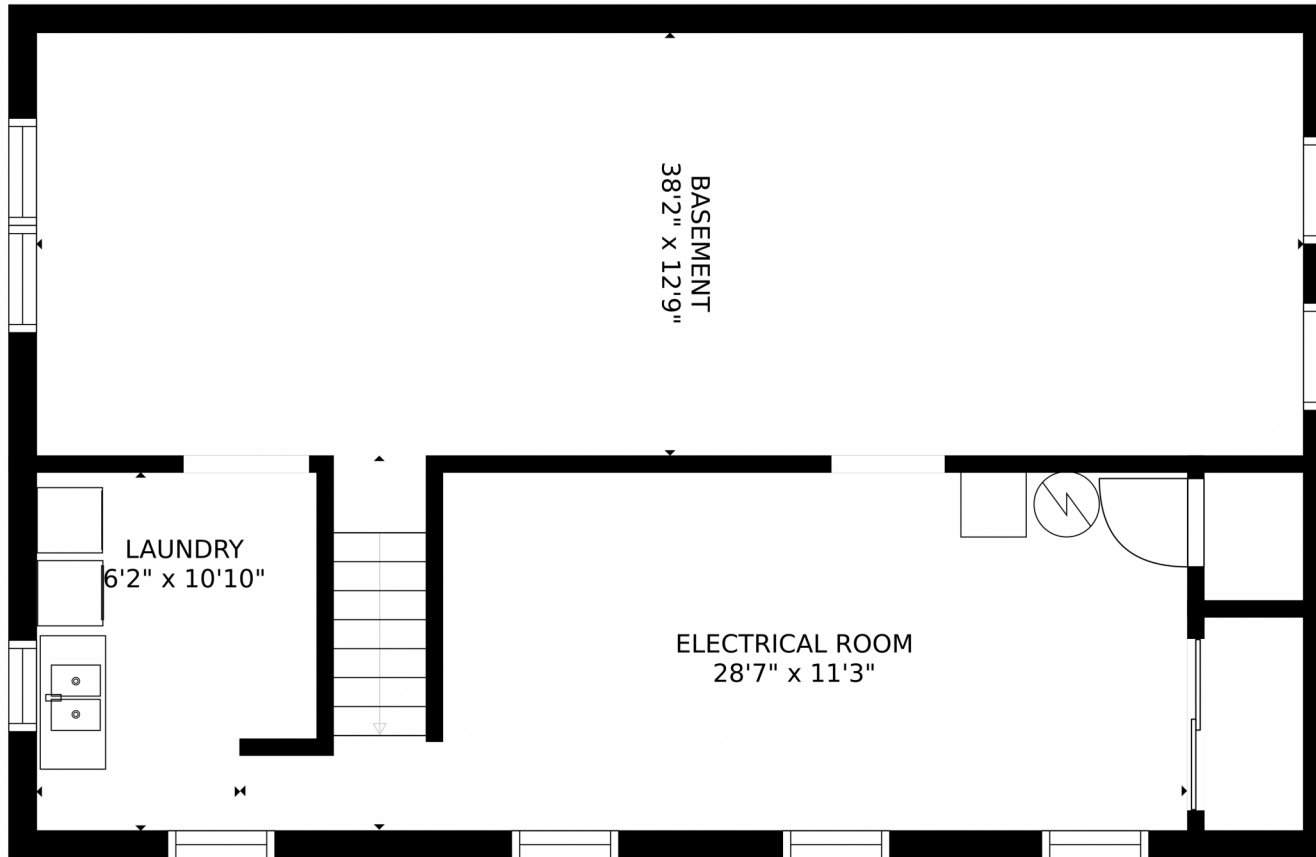
Disclaimer: Sizes and Dimensions are Approximate, Actual May Vary.



**Annie Schneider**  
303-548-5299  
annie@annieschneider.com



4510 South Lipan Street, Englewood, CO 80110 – Lower Level



GROSS INTERNAL AREA  
FLOOR 1: 919 sq. ft. FLOOR 2: 939 sq. ft  
EXCLUDED AREAS: , PATIO: 338 sq. ft  
TOTAL: 1859 sq. ft  
MEASUREMENTS CALCULATED BY V1Photos.com ARE DEEMED HIGHLY RELIABLE BUT NOT GUARANTEED.



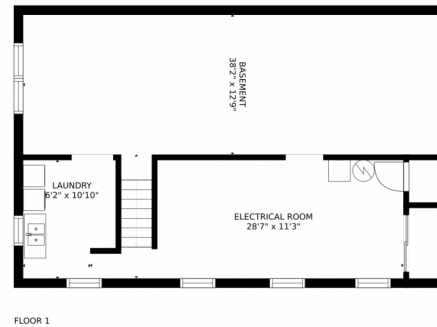
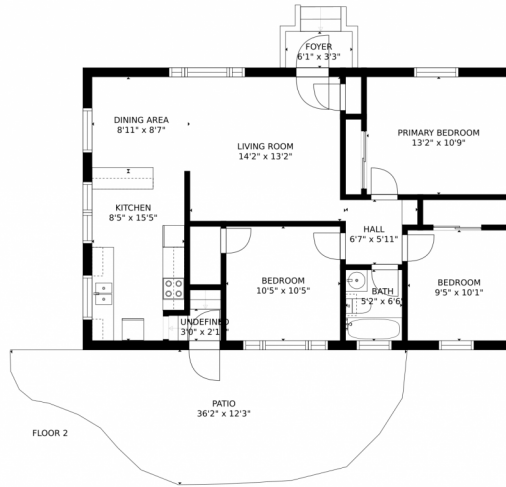
Disclaimer: Sizes and Dimensions are Approximate, Actual May Vary.



**Annie Schneider**  
303-548-5299  
annie@annieschneider.com



# 4510 South Lipan Street, Englewood, CO 80110 – All Levels



GROSS INTERNAL AREA  
FLOOR 1: 919 sq. ft, FLOOR 2: 939 sq. ft  
EXCLUDED AREAS: , PATIO: 338 sq. ft  
TOTAL: 1859 sq. ft  
MEASUREMENTS CALCULATED BY V1Photos.com ARE DEEMED HIGHLY RELIABLE BUT NOT GUARANTEED.



Disclaimer: Sizes and Dimensions are Approximate, Actual May Vary.



**Annie Schneider**  
303-548-5299  
annie@annieschneider.com

