


2110 East 12th Street  
Pueblo, CO 81001



 Single Family

 1394 SQFT

 3 Beds

 1 Baths

 2 Car

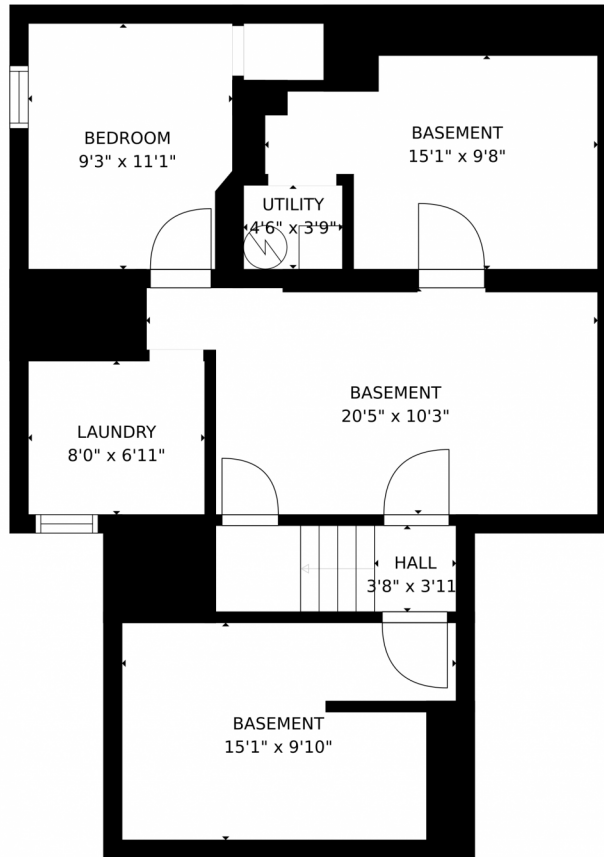
 0.28 Acre



Scan code for more property details



2110 East 12th Street, Pueblo, CO 81001 – Lower Level



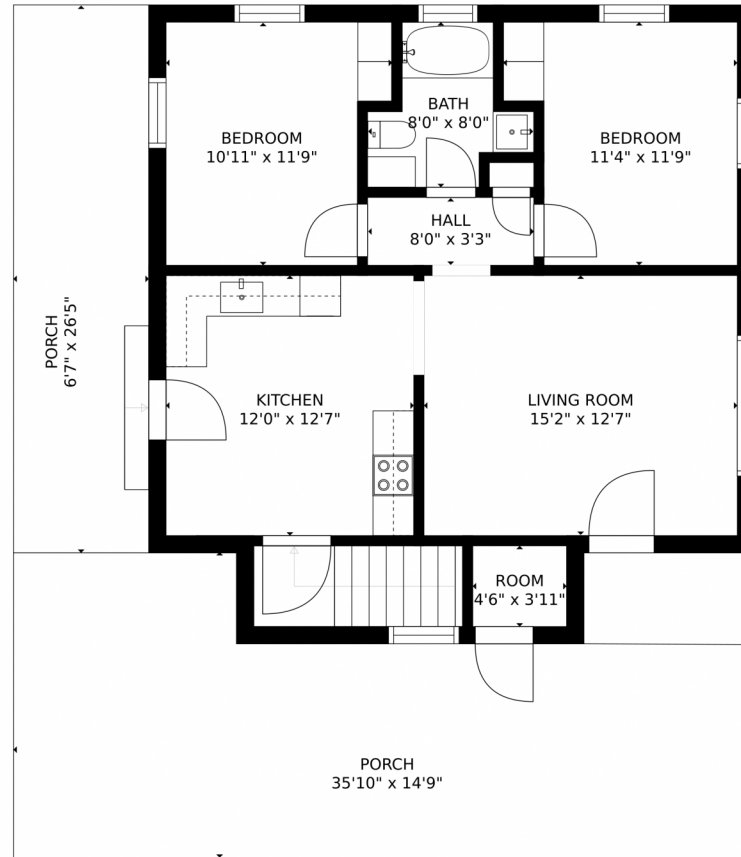
GROSS INTERNAL AREA  
FLOOR 1: 796 sq. ft. FLOOR 2: 752 sq. ft.  
EXCLUDED AREAS: , PORCH: 629 sq. ft.  
TOTAL: 1547 sq. ft.  
MEASUREMENTS CALCULATED BY V1Photos.com ARE DEEMED HIGHLY RELIABLE BUT NOT GUARANTEED.



Disclaimer: Sizes and Dimensions are Approximate, Actual May Vary.



# 2110 East 12th Street, Pueblo, CO 81001 – Main Level



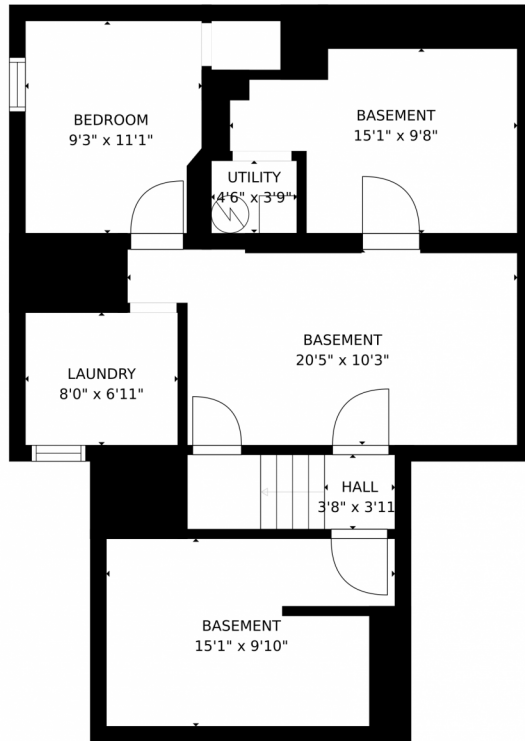
GROSS INTERNAL AREA  
FLOOR 1: 796 sq. ft. FLOOR 2: 752 sq. ft.  
EXCLUDED AREAS: , PORCH: 629 sq. ft.  
TOTAL: 1547 sq. ft.  
MEASUREMENTS CALCULATED BY V1Photos.COM ARE DEEMED HIGHLY RELIABLE BUT NOT GUARANTEED.



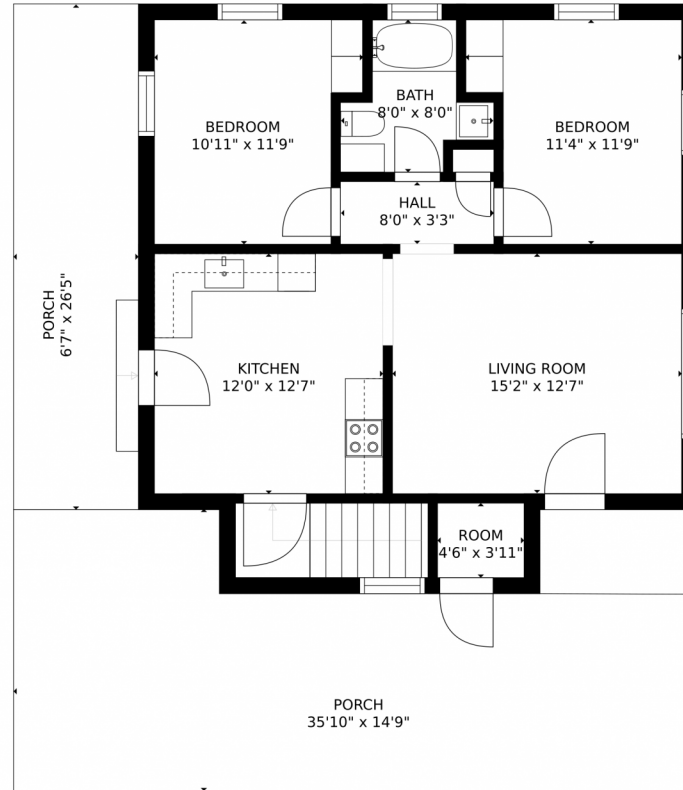
Disclaimer: Sizes and Dimensions are Approximate, Actual May Vary.



# 2110 East 12th Street, Pueblo, CO 81001 – All Levels



FLOOR 1



FLOOR 2

GROSS INTERNAL AREA  
FLOOR 1: 796 sq. ft. FLOOR 2: 752 sq. ft.  
EXCLUDED AREAS: , PORCH: 629 sq. ft.  
TOTAL: 1547 sq. ft.  
MEASUREMENTS CALCULATED BY V1Photos.com ARE DEEMED HIGHLY RELIABLE BUT NOT GUARANTEED.



Disclaimer: Sizes and Dimensions are Approximate, Actual May Vary.



Scan code  
for more  
property  
details