


 Single Family
  4114 SQFT
  5 Beds
  3/1 Baths
  2 Car
  0.14 Acre

PROPERTY DETAILS

Beautifully Upgraded 5 bedroom, 3 and a half bath home with attached 2 car garage. Bonus room in the fully finished basement, loft upstairs and the office on the main floor add ample living space. Southwest facing home means less snow shoveling in the winter.

Home is an upgraded Richmond American, the Hemingway Model, built in Spring 2022. Kitchen features stainless steel appliances and granite countertop. All appliances less than a year old! Newer Carpet and Hardwood floors throughout the home. New furnace, water heater and Central air units. Fully fenced yard with covered patio and front porch. Community features are endless surrounded by beautiful open space, check out the community website for all it has to offer.

<https://independencedenver.com/amenities/>

Buyer's and Buyer's agent to verify all information.

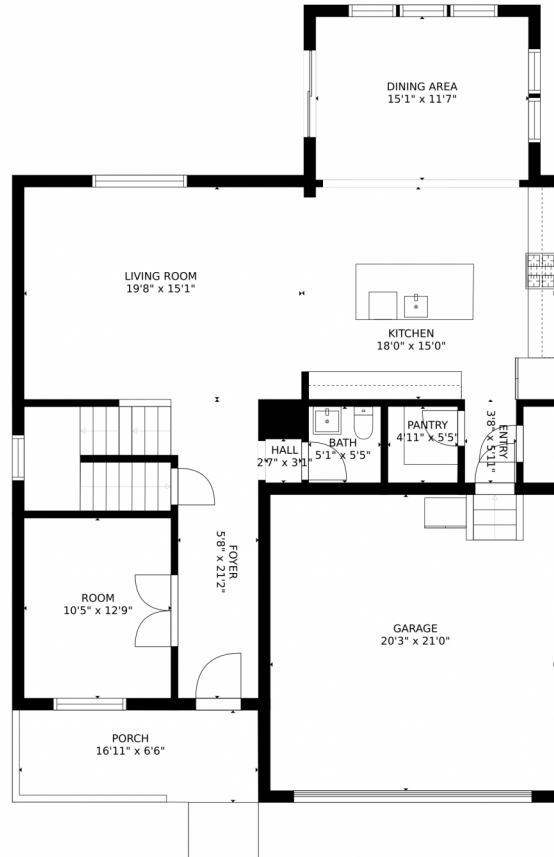
<https://v1tours.com/listing/44100>



Janelle Ruiz
228-918-8455
jannellemruiz@gmail.com
<https://jannelleruiz.homesforsaleinmetrodenver.com/>



1363 E Witherspoon Drive, Elizabeth, CO 80107 – 1st Floor



GROSS INTERNAL AREA
FLOOR 1: 1101 sq. ft, FLOOR 2: 1226 sq. ft
FLOOR 3: 1389 sq. ft, EXCLUDED AREAS:
GARAGE: 425 sq. ft, PORCH: 133 sq. ft
TOTAL: 3716 sq. ft
MEASUREMENTS CALCULATED BY V1Photos.COM ARE DEEMED HIGHLY RELIABLE BUT NOT GUARANTEED.



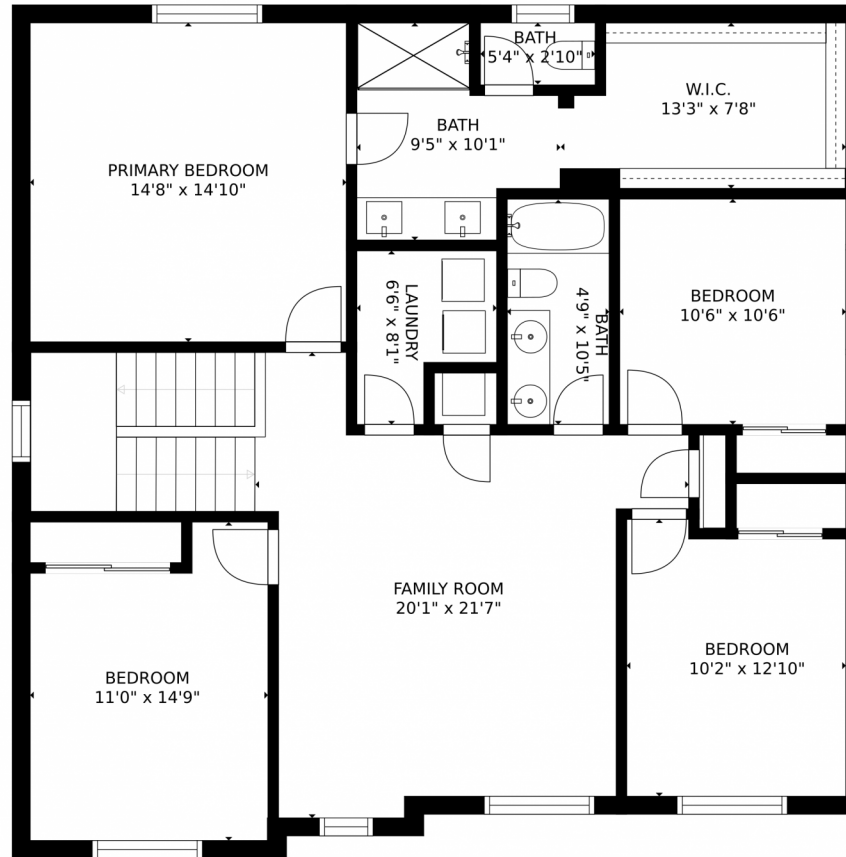
Disclaimer: Sizes and Dimensions are Approximate, Actual May Vary.



Janelle Ruiz
228-918-8455
jannellemruiz@gmail.com
<https://jannelleruiz.homesforsaleinmetrodenver.com/>



1363 E Witherspoon Drive, Elizabeth, CO 80107 – 2nd Floor



GROSS INTERNAL AREA
FLOOR 1: 1101 sq. ft, FLOOR 2: 1226 sq. ft
FLOOR 3: 1389 sq. ft, EXCLUDED AREAS:
GARAGE: 425 sq. ft, PORCH: 133 sq. ft
TOTAL: 3716 sq. ft
MEASUREMENTS CALCULATED BY V1Photos.com ARE DEEMED HIGHLY RELIABLE BUT NOT GUARANTEED.



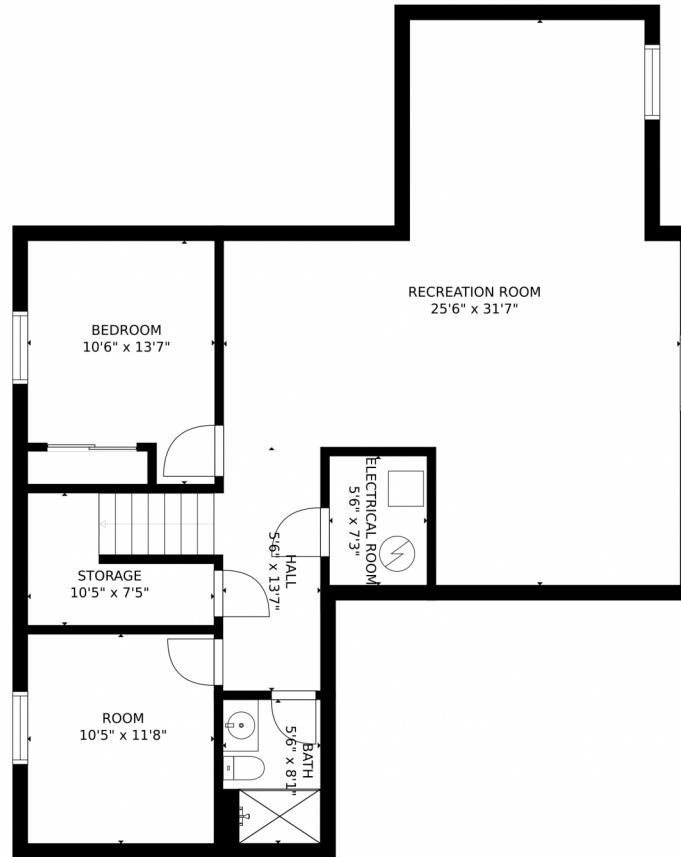
Disclaimer: Sizes and Dimensions are Approximate, Actual May Vary.



Jannelle Ruiz
228-918-8455
jannellemruiz@gmail.com
<https://jannelleruiz.homesforsaleinmetrodenver.com/>



1363 E Witherspoon Drive, Elizabeth, CO 80107 – Basement



GROSS INTERNAL AREA
FLOOR 1: 1101 sq. ft, FLOOR 2: 1226 sq. ft
FLOOR 3: 1389 sq. ft, EXCLUDED AREAS:
GARAGE: 425 sq. ft, PORCH: 133 sq. ft
TOTAL: 3716 sq. ft
MEASUREMENTS CALCULATED BY V1Photos.com ARE DEEMED HIGHLY RELIABLE BUT NOT GUARANTEED.



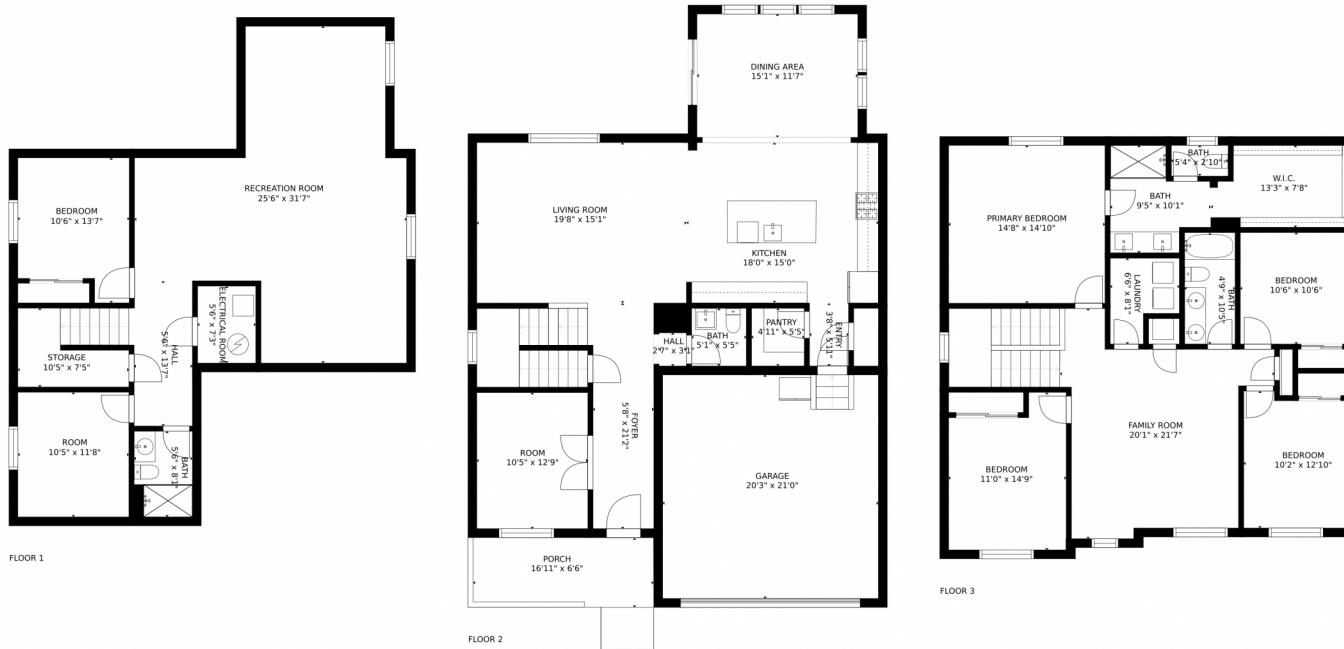
Disclaimer: Sizes and Dimensions are Approximate, Actual May Vary.



Jannelle Ruiz
228-918-8455
jannellemruiz@gmail.com
<https://jannelleruiz.homesforsaleinmetrodenver.com/>



1363 E Witherspoon Drive, Elizabeth, CO 80107 – All Floors



GROSS INTERNAL AREA
FLOOR 1: 1101 sq. ft, FLOOR 2: 1226 sq. ft
FLOOR 3: 1389 sq. ft, EXCLUDED AREAS:
GARAGE: 425 sq. ft, PORCH: 133 sq. ft
TOTAL: 3716 sq. ft
MEASUREMENTS CALCULATED BY V1Photos.com ARE DEEMED HIGHLY RELIABLE BUT NOT GUARANTEED.



Disclaimer: Sizes and Dimensions are Approximate, Actual May Vary.



Jannelle Ruiz
228-918-8455
jannellemruiz@gmail.com
<https://jannelle.ruiz.homesforsaleinmetrodenver.com/>

