



7195 Preble Dr
Colorado Springs, CO 80915



Single Family



2103 SQFT



3 Beds



2/1 Baths

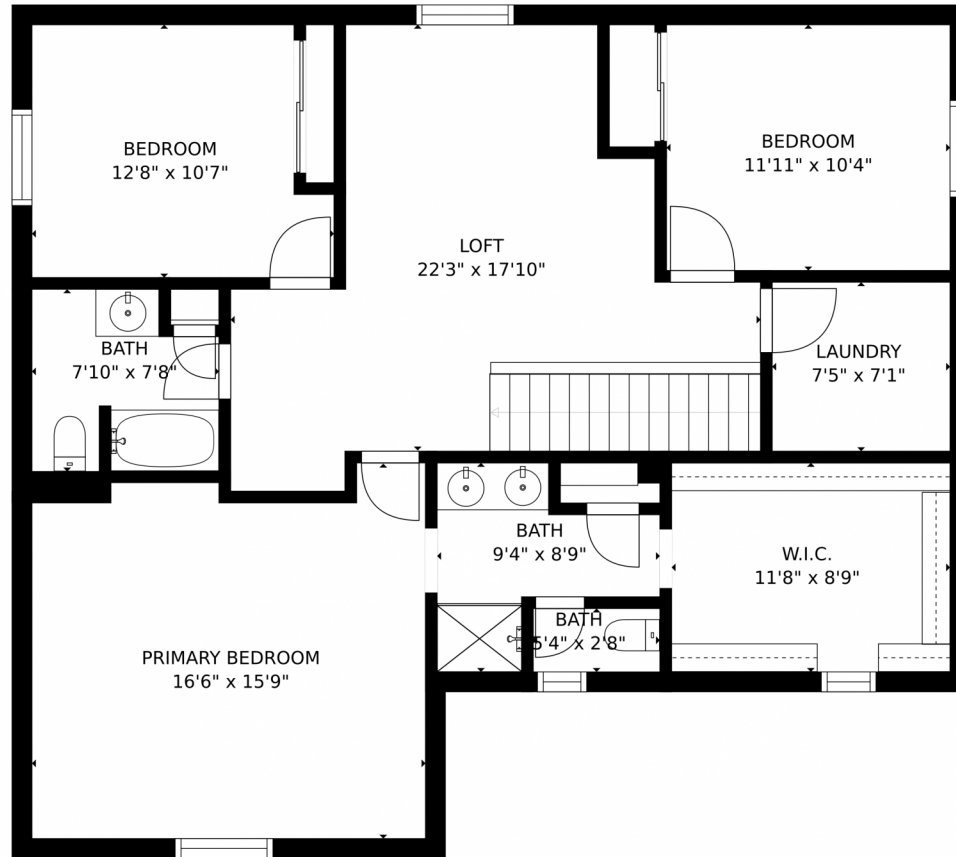


2 Car

Terry Moss
719-466-1299
terry.m5@icloud.com



7195 Preble Dr, Colorado Springs, CO 80915 – Upper Level



GROSS INTERNAL AREA
FLOOR 1: 789 sq. ft, FLOOR 2: 1160 sq. ft
EXCLUDED AREAS: , GARAGE: 370 sq. ft
PORCH: 24 sq. ft
TOTAL: 1949 sq. ft
MEASUREMENTS CALCULATED BY V1Photos.com ARE DEEMED HIGHLY RELIABLE BUT NOT GUARANTEED.

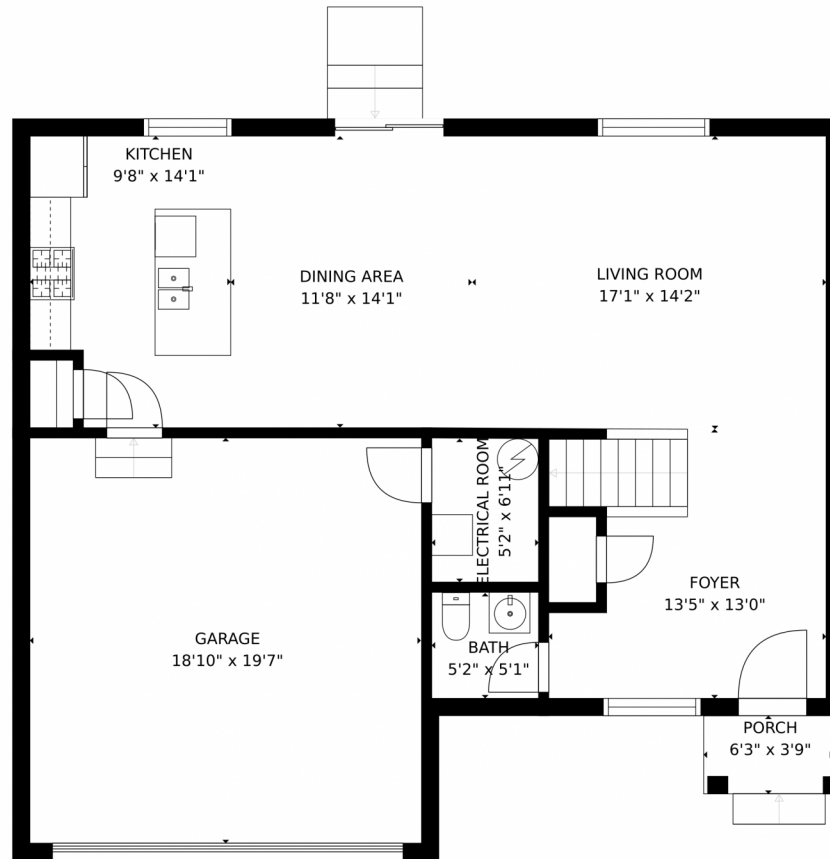


Disclaimer: Sizes and Dimensions are Approximate, Actual May Vary.

Terry Moss
719-466-1299
terry.m5@icloud.com



7195 Preble Dr, Colorado Springs, CO 80915 – Main Level



GROSS INTERNAL AREA
FLOOR 1: 789 sq. ft, FLOOR 2: 1160 sq. ft
EXCLUDED AREAS: , GARAGE: 370 sq. ft
PORCH: 24 sq. ft
TOTAL: 1949 sq. ft
MEASUREMENTS CALCULATED BY V1Photos.COM ARE DEEMED HIGHLY RELIABLE BUT NOT GUARANTEED.

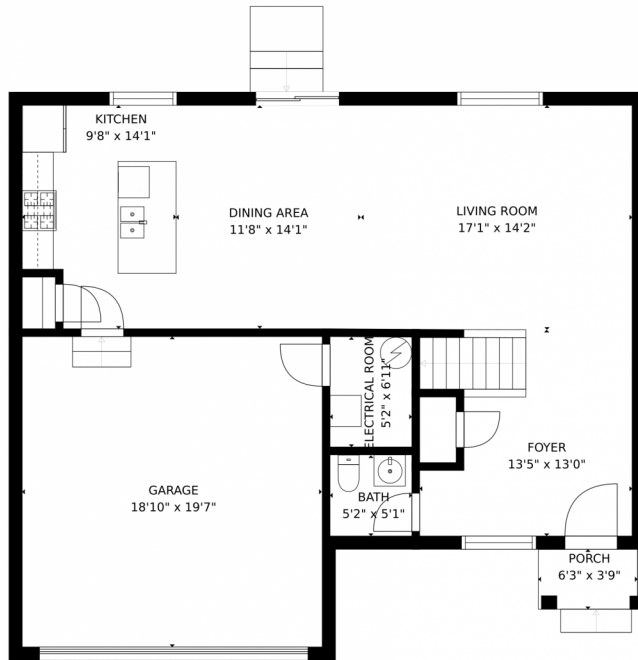


Disclaimer: Sizes and Dimensions are Approximate, Actual May Vary.

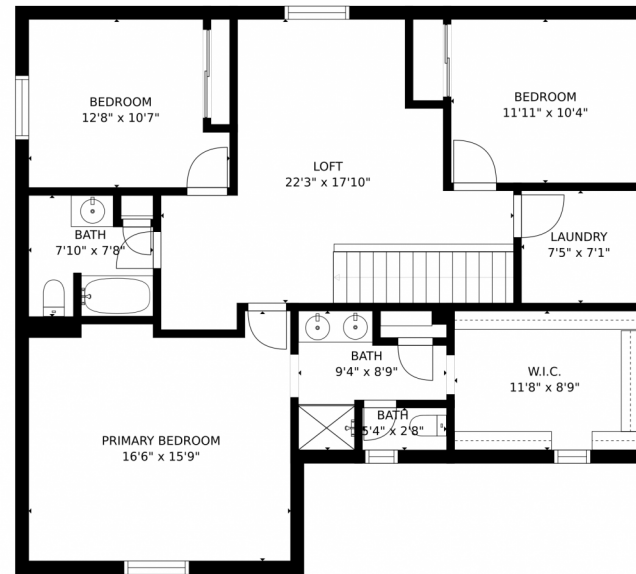
Terry Moss
719-466-1299
terry.m5@icloud.com



7195 Preble Dr, Colorado Springs, CO 80915 – All Levels



FLOOR 1



FLOOR 2

GROSS INTERNAL AREA
FLOOR 1: 789 sq. ft, FLOOR 2: 1160 sq. ft
EXCLUDED AREAS: , GARAGE: 370 sq. ft
PORCH: 24 sq. ft
TOTAL: 1949 sq. ft
MEASUREMENTS CALCULATED BY V1Photos.COM ARE DEEMED HIGHLY RELIABLE BUT NOT GUARANTEED.



Disclaimer: Sizes and Dimensions are Approximate, Actual May Vary.

Terry Moss
719-466-1299
terry.m5@icloud.com

