



Single Family



3600 SQFT



4 Beds



3/1 Baths



2 Car



4.04 Acre

PROPERTY DETAILS

- *Top of the world! Beautiful panoramic views.
- *Only 35-minute drive to downtown Denver and 90 minutes to ski areas.
- *Massive stone fireplace, 3 flues. All 3 fireplaces have new spark arrestors.
- *700' deep well (at bottom of driveway).
- *New Class 4 roof.
- *Oversize septic tanks (1500 gallon).
- *Circular driveway all the way around the house.
- *Large parking area for up to 16 vehicles.
- *Great house for entertaining.
- *Over-size two car garage with storage shelves.
- *New enclosed, insulated workshop in garage.
- *New self-locking garage doors with remote access from phone.



John Woodside
303-918-4425
johnwoodside229@gmail.com



Scan code
for more
property
details



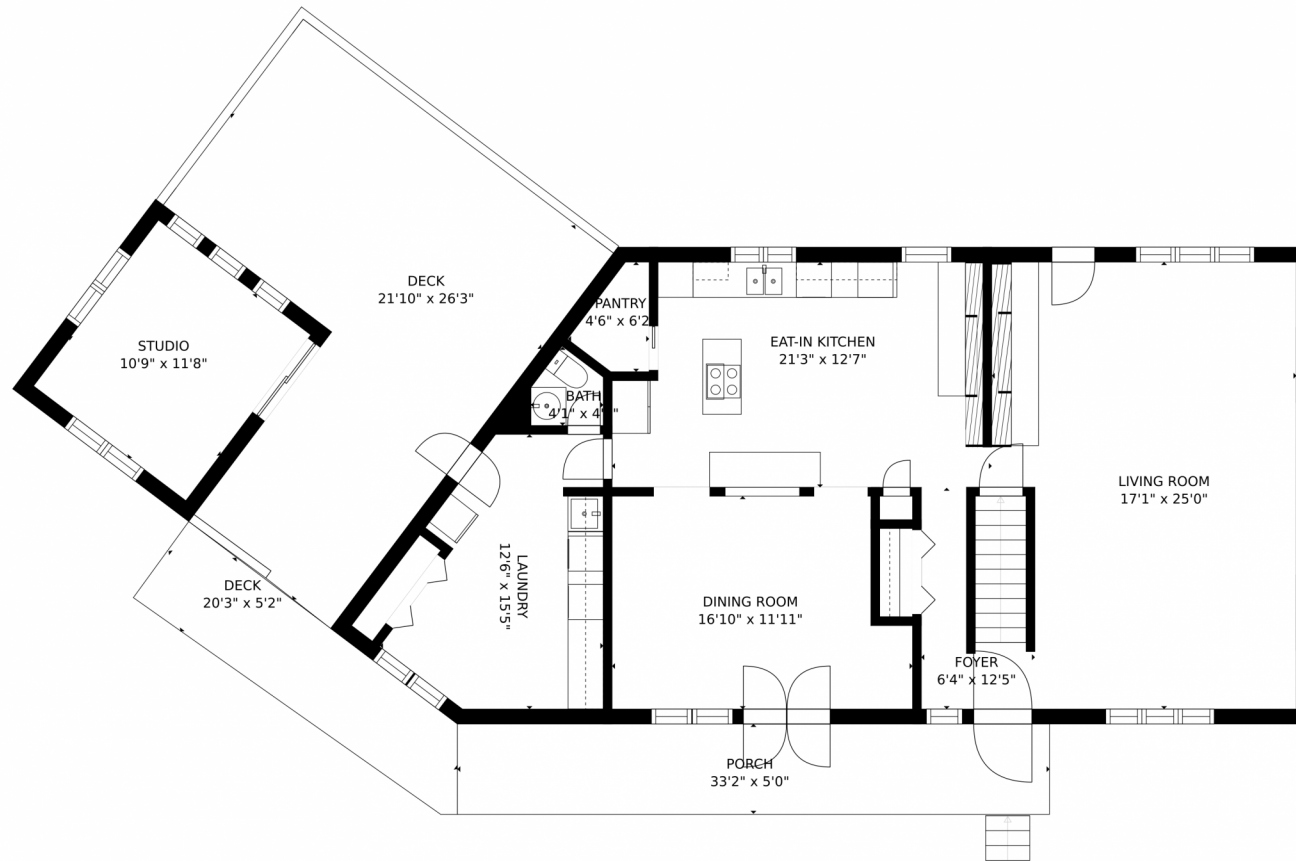
- *Walk in pantry off kitchen.
- *New whole house attic fan (R45).
- *New insulation in attic (R75).
- *Five-minute drive to Highway 285 (but feels worlds away).
- *2.5 miles from Park & Ride.
- *New flooring on the main floor and upstairs bathrooms (Invincible brand).
- *New tile in master bathroom shower/tub.
- *Window over kitchen sink overlooks aspen trees and Mt. Evans. *New stove hood over island in kitchen.
- *Beautiful beetle kill wood cabinets with slide out drawers in kitchen.
- *Plenty of cabinets and counters in kitchen.
- *Two decks facing Mt. Evans.
- *Enjoy the amazing mountain vistas.
- *Detached room that might be used for home office, hot tub, or guest room.
- *Four bedrooms (one non-conforming).
- *Four bathrooms.
- *Lower level has a sink, dishwasher, kitchen counter and a place for a refrigerator.
- *Lower-level bathroom has a walk-in shower.
- *Lower level has a large living room and a bonus room.
- *Lots of storage-14 closets.
- *House recently painted.
- *Wildlife often in yard.
- *Large shed for storage.
- *Established garden areas.
- *Giant laundry room with lots of cabinets, sink, long counter, closet.
- *4 acres of land - great for pets.
- *Built in wooden bookshelves on every floor.
- *Built in safe in fireplace.



John Woodside
303-918-4425
johnwoodside229@gmail.com



6590 Ridgeview Drive, Morrison, CO 80465 – Main Level



GROSS INTERNAL AREA
FLOOR 1: 1081 sq. ft. FLOOR 2: 1281 sq. ft.
FLOOR 3: 902 sq. ft. EXCLUDED AREAS:
GARAGE: 557 sq. ft. PATIO: 183 sq. ft.
DECK: 514 sq. ft. PORCH: 168 sq. ft.
TOTAL: 3264 sq. ft.
MEASUREMENTS CALCULATED BY V1Photos.com ARE DEEMED HIGHLY RELIABLE BUT NOT GUARANTEED.



Disclaimer: Sizes and Dimensions are Approximate, Actual May Vary.



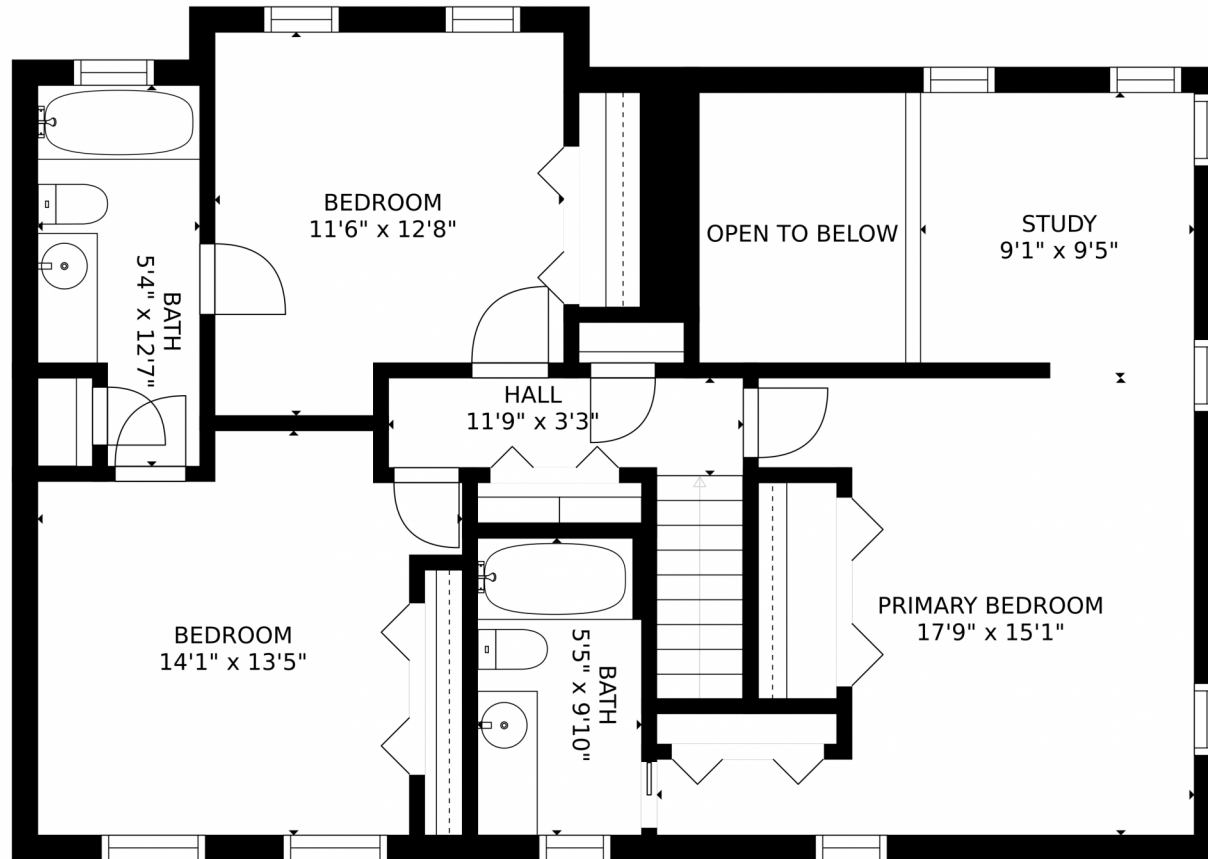
John Woodside
303-918-4425
johnwoodside229@gmail.com



Scan code for more property details



6590 Ridgeview Drive, Morrison, CO 80465 – Upper Level



GROSS INTERNAL AREA
FLOOR 1: 1081 sq. ft. FLOOR 2: 1281 sq. ft.
FLOOR 3: 902 sq. ft. EXCLUDED AREAS:
GARAGE: 557 sq. ft. PATIO: 183 sq. ft.
DECK: 514 sq. ft. PORCH: 168 sq. ft.
TOTAL: 3264 sq. ft.
MEASUREMENTS CALCULATED BY V1Photos.COM ARE DEEMED HIGHLY RELIABLE BUT NOT GUARANTEED.

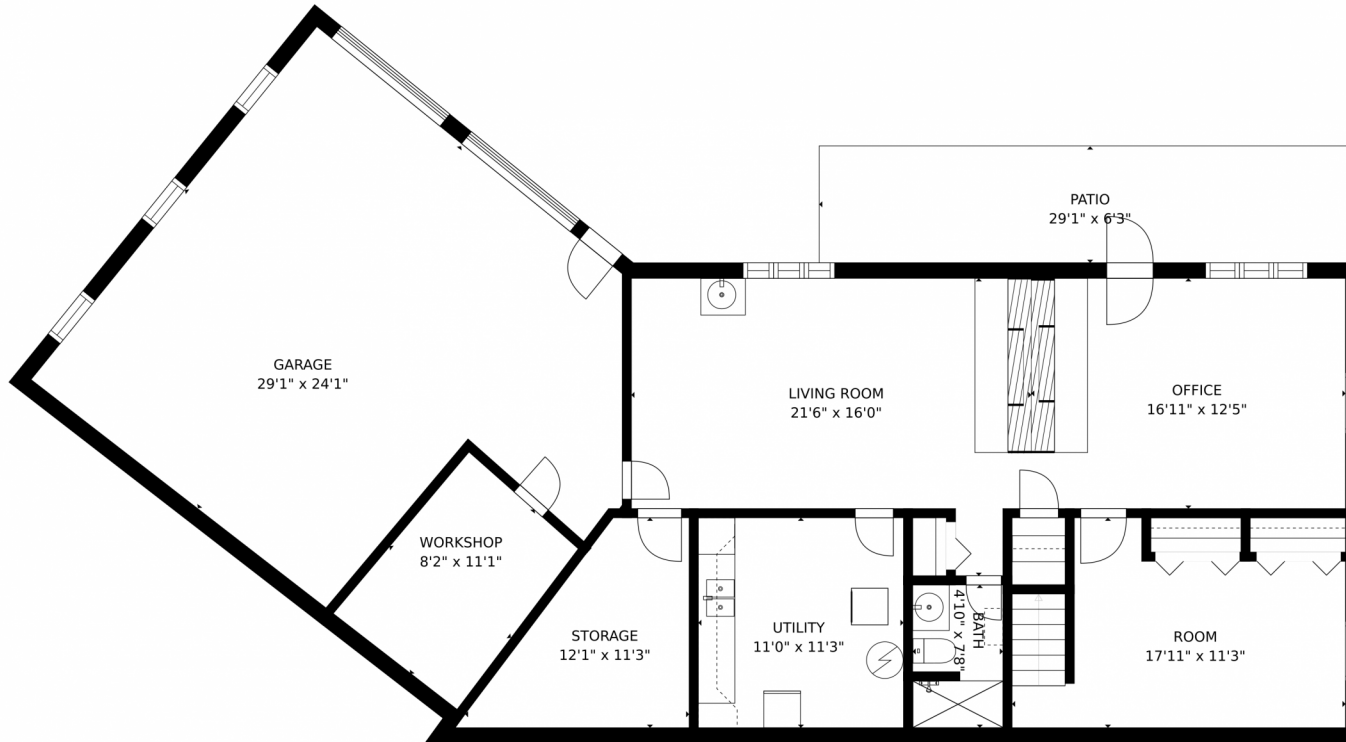
Disclaimer: Sizes and Dimensions are Approximate, Actual May Vary.



John Woodside
303-918-4425
johnwoodside229@gmail.com



6590 Ridgeview Drive, Morrison, CO 80465 – Lower Level



GROSS INTERNAL AREA
FLOOR 1: 1081 sq. ft, FLOOR 2: 1281 sq. ft
FLOOR 3: 902 sq. ft, EXCLUDED AREAS:
GARAGE: 557 sq. ft, PATIO: 183 sq. ft
DECK: 514 sq. ft, PORCH: 168 sq. ft
TOTAL: 3264 sq. ft
MEASUREMENTS CALCULATED BY V1Photos.COM ARE DEEMED HIGHLY RELIABLE BUT NOT GUARANTEED.



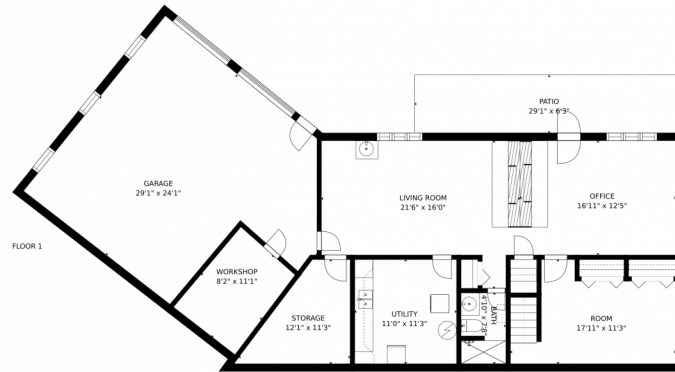
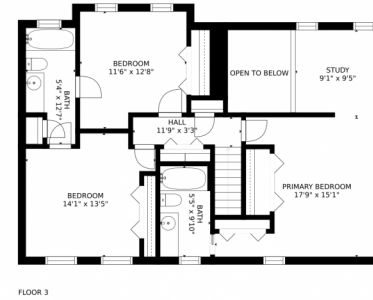
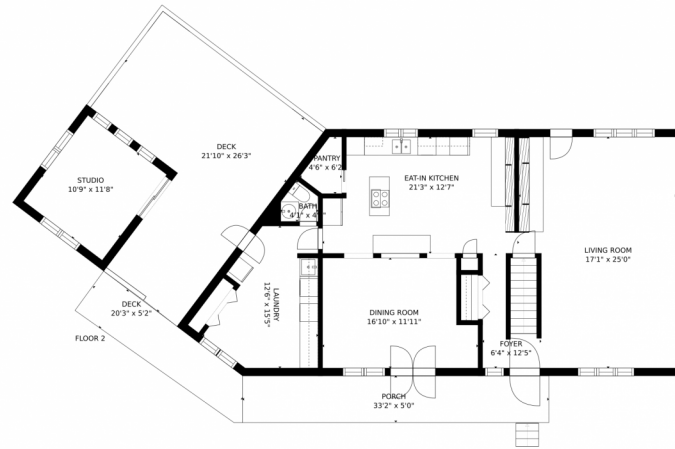
Disclaimer: Sizes and Dimensions are Approximate, Actual May Vary.



John Woodside
303-918-4425
johnwoodside229@gmail.com



6590 Ridgeview Drive, Morrison, CO 80465 – All Levels



GROSS INTERNAL AREA
 FLOOR 1: 1081 sq. ft. FLOOR 2: 1281 sq. ft.
 FLOOR 3: 902 sq. ft. EXCLUDED AREAS:
 GARAGE: 557 sq. ft. PATIO: 183 sq. ft.
 DECK: 514 sq. ft. PORCH: 168 sq. ft.
 TOTAL: 3264 sq. ft.

MEASUREMENTS CALCULATED BY V1Photos.COM ARE DEEMED HIGHLY RELIABLE BUT NOT GUARANTEED.



Disclaimer: Sizes and Dimensions are Approximate, Actual May Vary.



John Woodside
 303-918-4425
 johnwoodside229@gmail.com



Scan code for more property details