

 Single Family

 1561 SQFT

 3 Beds

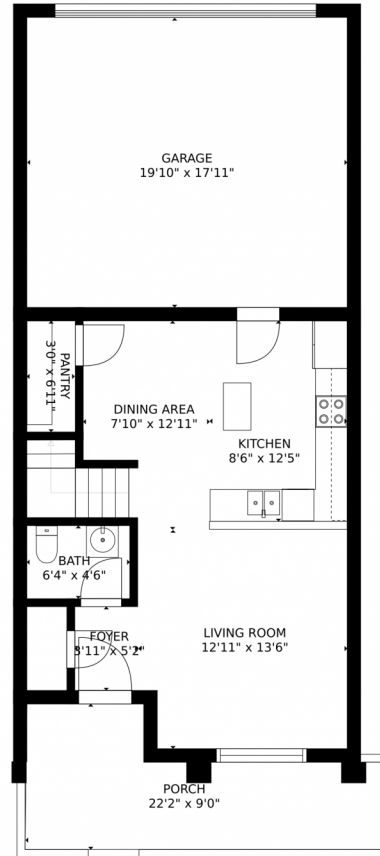
 2/1 Baths



**Taylor Haas**  
303-665-7368  
taylorh@coloradorpm.com  
<https://www.coloradorpm.com/available-rental-properties-denver>



# 4910 Great Owl Point, Colorado Springs, CO 80916 — Main Level



GROSS INTERNAL AREA  
FLOOR 1: 496 sq. ft. FLOOR 2: 898 sq. ft  
EXCLUDED AREAS: , GARAGE: 356 sq. ft  
PORCH: 146 sq. ft  
TOTAL: 1394 sq. ft

MEASUREMENTS CALCULATED BY V1Photos.COM ARE DEEMED HIGHLY RELIABLE BUT NOT GUARANTEED.



Disclaimer: Sizes and Dimensions are Approximate, Actual May Vary.



**Taylor Haas**

303-665-7368

taylorh@coloradorpm.com

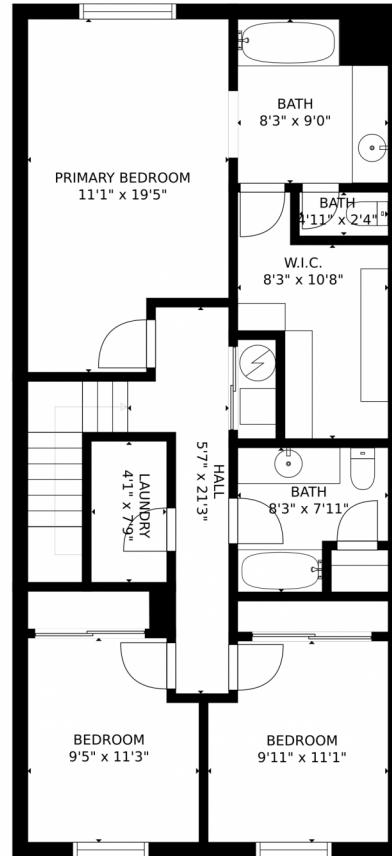
<https://www.coloradorpm.com/available-rental-properties-denver>



Scan code  
for more  
property  
details



# 4910 Great Owl Point, Colorado Springs, CO 80916 – Upper Level



GROSS INTERNAL AREA  
FLOOR 1: 496 sq. ft., FLOOR 2: 898 sq. ft  
EXCLUDED AREAS: , GARAGE: 356 sq. ft  
PORCH: 146 sq. ft  
TOTAL: 1394 sq. ft

MEASUREMENTS CALCULATED BY V1Photos.com ARE DEEMED HIGHLY RELIABLE BUT NOT GUARANTEED.



Disclaimer: Sizes and Dimensions are Approximate, Actual May Vary.



**Taylor Haas**

303-665-7368

taylorh@coloradorpm.com

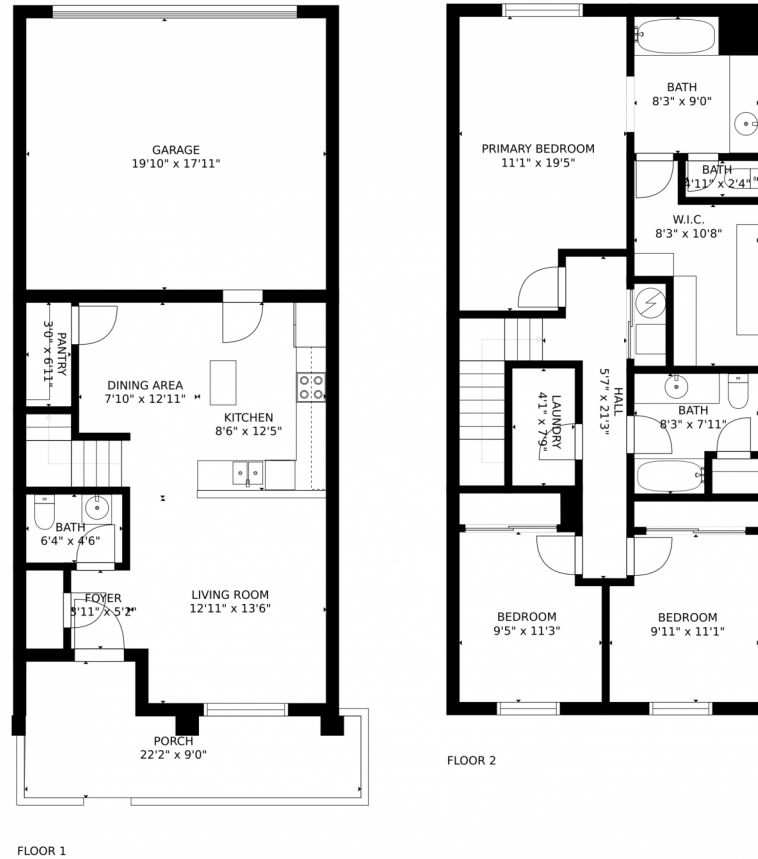
<https://www.coloradorpm.com/available-rental-properties-denver>



Scan code  
for more  
property  
details



# 4910 Great Owl Point, Colorado Springs, CO 80916 – All Levels



GROSS INTERNAL AREA  
FLOOR 1: 496 sq. ft., FLOOR 2: 898 sq. ft.  
EXCLUDED AREAS: , GARAGE: 356 sq. ft.  
PORCH: 146 sq. ft.  
TOTAL: 1394 sq. ft.

MEASUREMENTS CALCULATED BY V1Photos.COM ARE DEEMED HIGHLY RELIABLE BUT NOT GUARANTEED.



Disclaimer: Sizes and Dimensions are Approximate, Actual May Vary.



**Taylor Haas**

303-665-7368

taylorh@coloradorpm.com

<https://www.coloradorpm.com/available-rental-properties-denver>



Scan code  
for more  
property  
details

