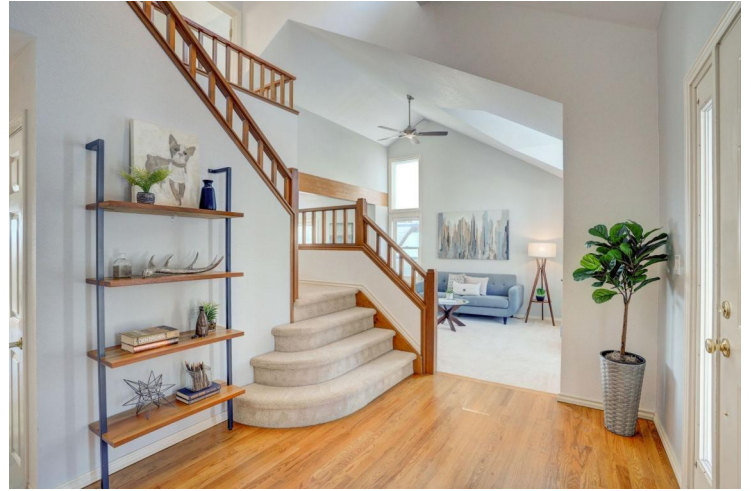


Welcome home to 670 W Pine Street, Louisville



Single Family



3495 SQFT



4 Beds



3/1 Baths



2 Car



0.16 Acre

## PROPERTY DETAILS

This beautiful 4 bed/4 bath home with vaulted ceilings and large windows throughout allows natural light and views from all levels. The inviting main floor offers a large open floor, dedicated formal dining room, large living room with vaulted ceilings, open concept kitchen and adjoining cozy family room. Numerous updates include a whole house humidifier, all new cellular blinds, owned solar panels, new James Hardie cement board siding and so much more! Enjoy the 2 outdoor deck/patio areas facing the expansive back yard with incredible views. The walk-out basement includes a 4th bedroom with 3/4 bathroom and lots more room to customize. Only minutes from the Rec Center and downtown Louisville!



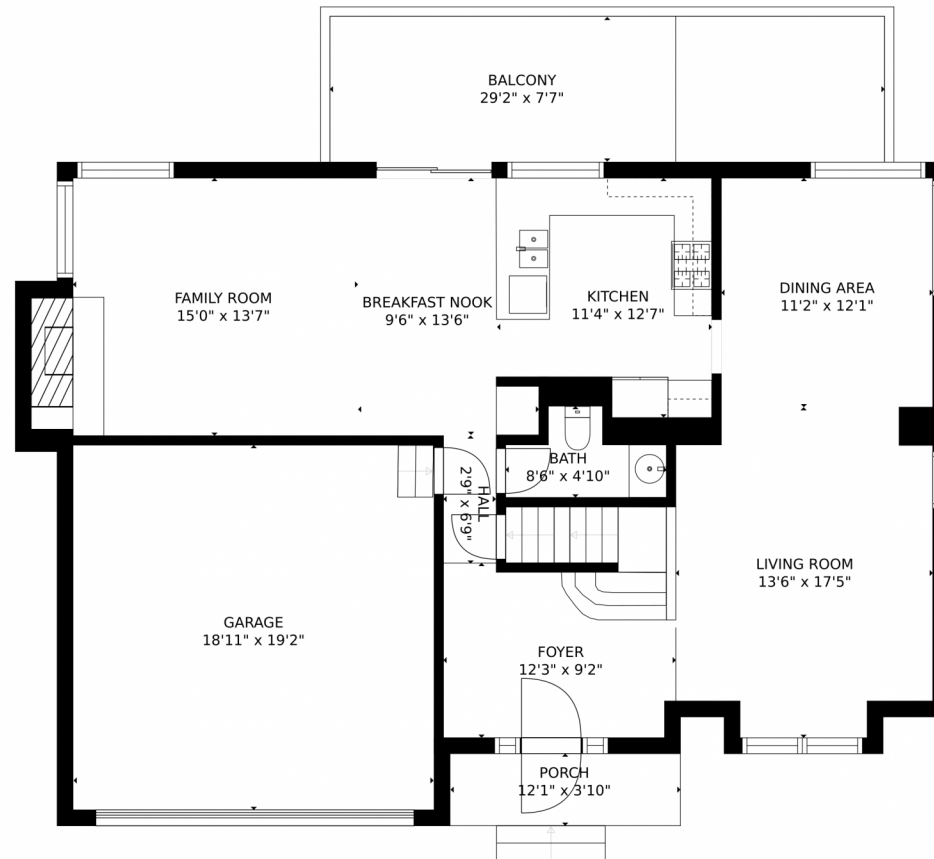
**Cristi Knudsen**  
720-722-4252  
cristiknudsen@remax.net



Scan code  
for more  
property  
details



# 670 W Pine Street, Louisville, CO 80027 – Main Level



GROSS INTERNAL AREA  
FLOOR 1: 920 sq. ft., FLOOR 2: 1025 sq. ft.  
FLOOR 3: 888 sq. ft., EXCLUDED AREAS:  
DECK: 199 sq. ft., PATIO: 474 sq. ft.  
GARAGE: 365 sq. ft., BALCONY: 224 sq. ft.  
PORCH: 46 sq. ft.  
TOTAL: 2832 sq. ft.

MEASUREMENTS CALCULATED BY V1Photos.COM ARE DEEMED HIGHLY RELIABLE BUT NOT GUARANTEED.

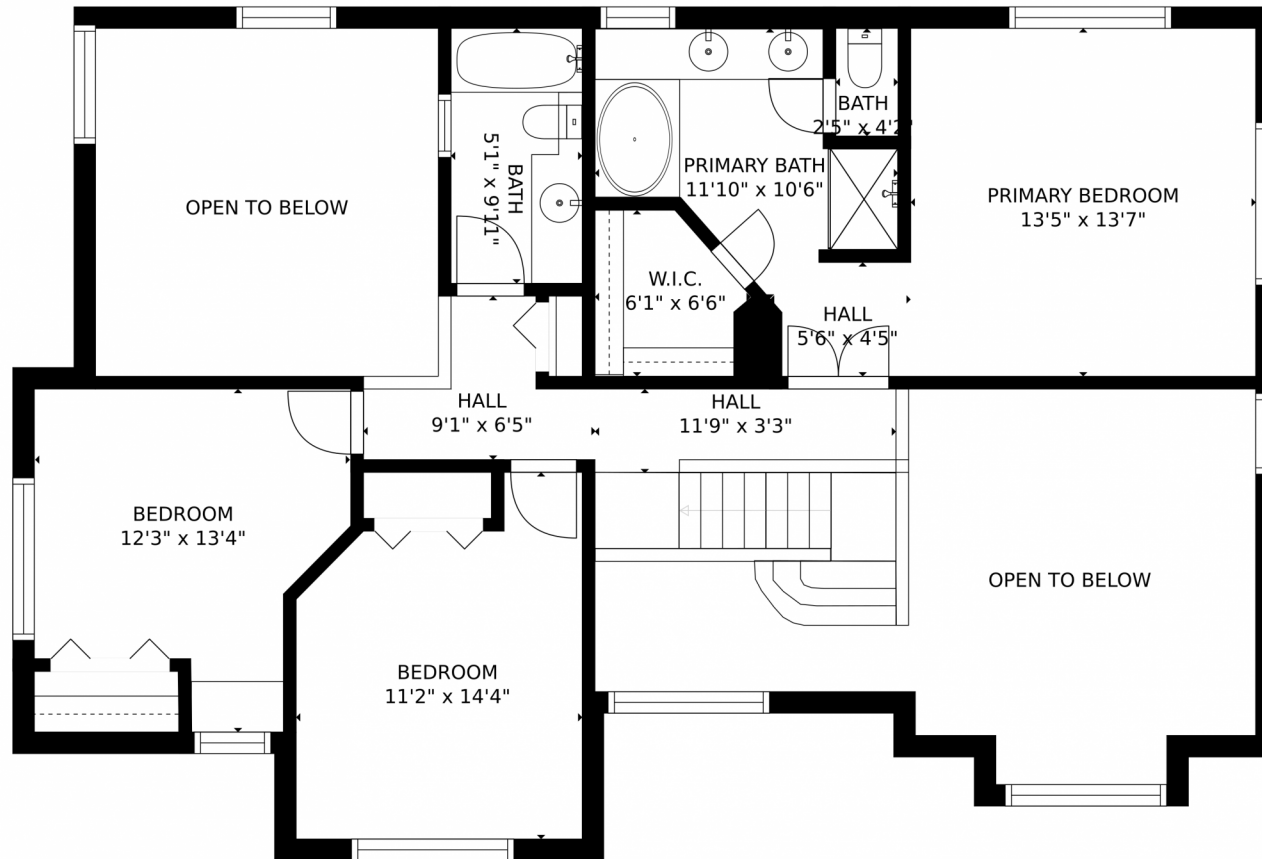


Disclaimer: Sizes and Dimensions are Approximate, Actual May Vary.



**Cristi Knudsen**  
720-722-4252  
cristiknudsen@remax.net





GROSS INTERNAL AREA  
FLOOR 1: 920 sq. ft., FLOOR 2: 1025 sq. ft.  
FLOOR 3: 888 sq. ft., EXCLUDED AREAS:  
DECK: 199 sq. ft., PATIO: 474 sq. ft.  
GARAGE: 365 sq. ft., BALCONY: 224 sq. ft.  
PORCH: 46 sq. ft.  
TOTAL: 2832 sq. ft.

MEASUREMENTS CALCULATED BY V1Photos.com ARE DEEMED HIGHLY RELIABLE BUT NOT GUARANTEED.



Disclaimer: Sizes and Dimensions are Approximate, Actual May Vary.



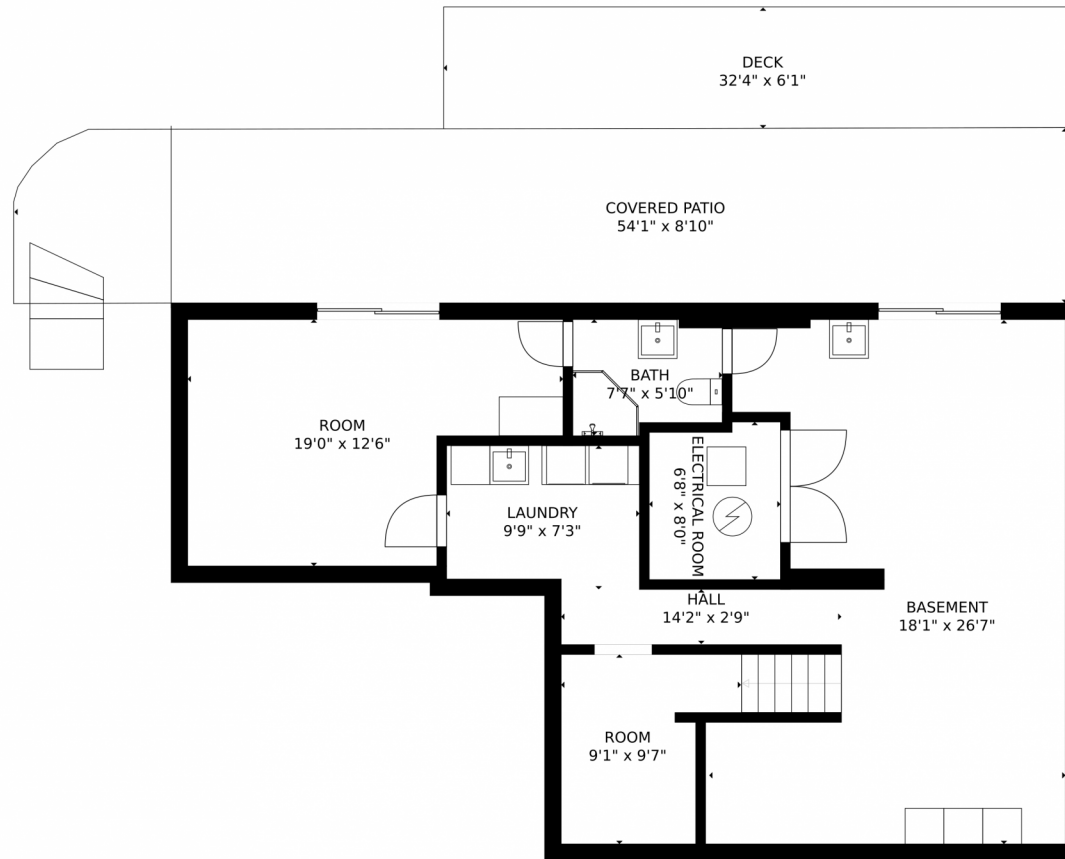
**Cristi Knudsen**  
720-722-4252  
cristiknudsen@remax.net



Scan code  
for more  
property  
details



# 670 W Pine Street, Louisville, CO 80027 – Lower Level



GROSS INTERNAL AREA  
FLOOR 1: 920 sq. ft, FLOOR 2: 1025 sq. ft  
FLOOR 3: 888 sq. ft, EXCLUDED AREAS:  
DECK: 199 sq. ft, PATIO: 474 sq. ft  
GARAGE: 365 sq. ft, BALCONY: 224 sq. ft  
PORCH: 46 sq. ft  
TOTAL: 2832 sq. ft

MEASUREMENTS CALCULATED BY V1Photos.COM ARE DEEMED HIGHLY RELIABLE BUT NOT GUARANTEED.



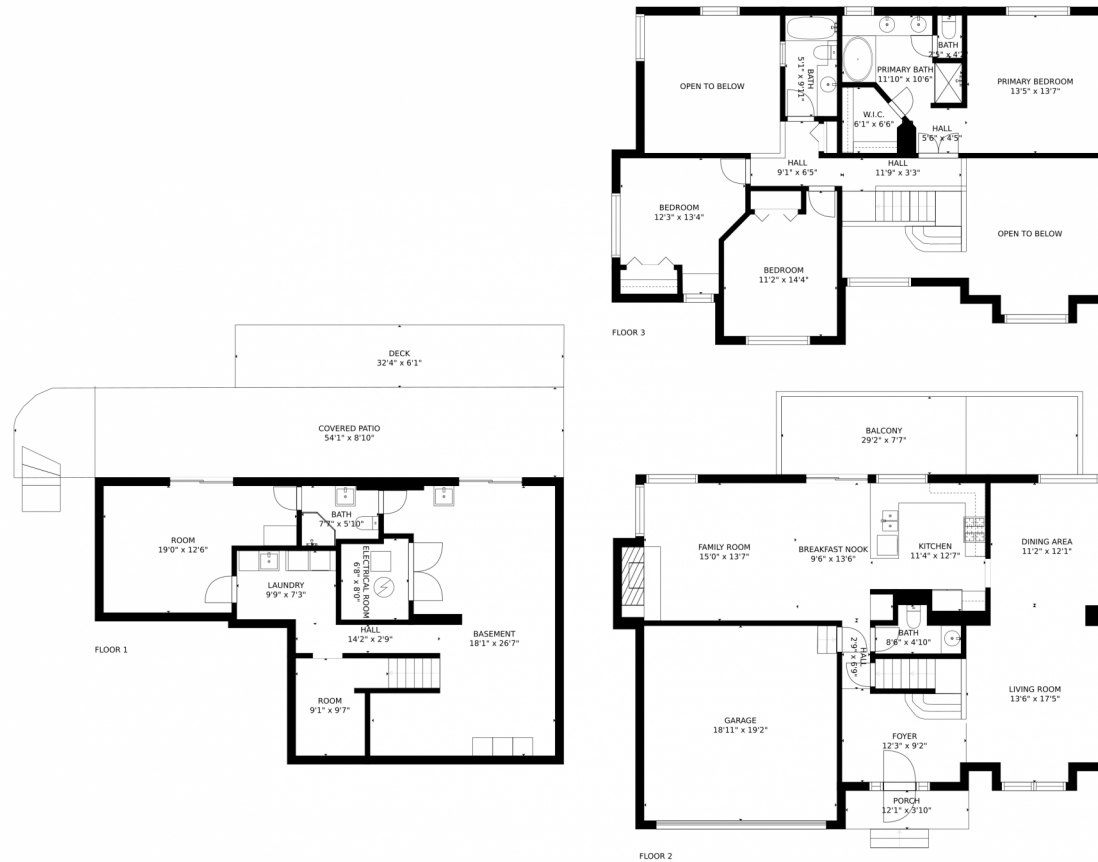
Disclaimer: Sizes and Dimensions are Approximate, Actual May Vary.



**Cristi Knudsen**  
720-722-4252  
cristiknudsen@remax.net



# 670 W Pine Street, Louisville, CO 80027 – All Levels



GROSS INTERNAL AREA  
 FLOOR 1: 920 sq. ft, FLOOR 2: 1025 sq. ft  
 FLOOR 3: 888 sq. ft, EXCLUDED AREAS:  
 DECK: 199 sq. ft, PATIO: 474 sq. ft  
 GARAGE: 365 sq. ft, BALCONY: 224 sq. ft  
 PORCH: 46 sq. ft  
 TOTAL: 2832 sq. ft

MEASUREMENTS CALCULATED BY V1Photos.COM ARE DEEMED HIGHLY RELIABLE BUT NOT GUARANTEED.



Disclaimer: Sizes and Dimensions are Approximate, Actual May Vary.



**Cristi Knudsen**  
 720-722-4252  
 cristiknudsen@remax.net

