




 Single Family

 960 SQFT

 2 Beds

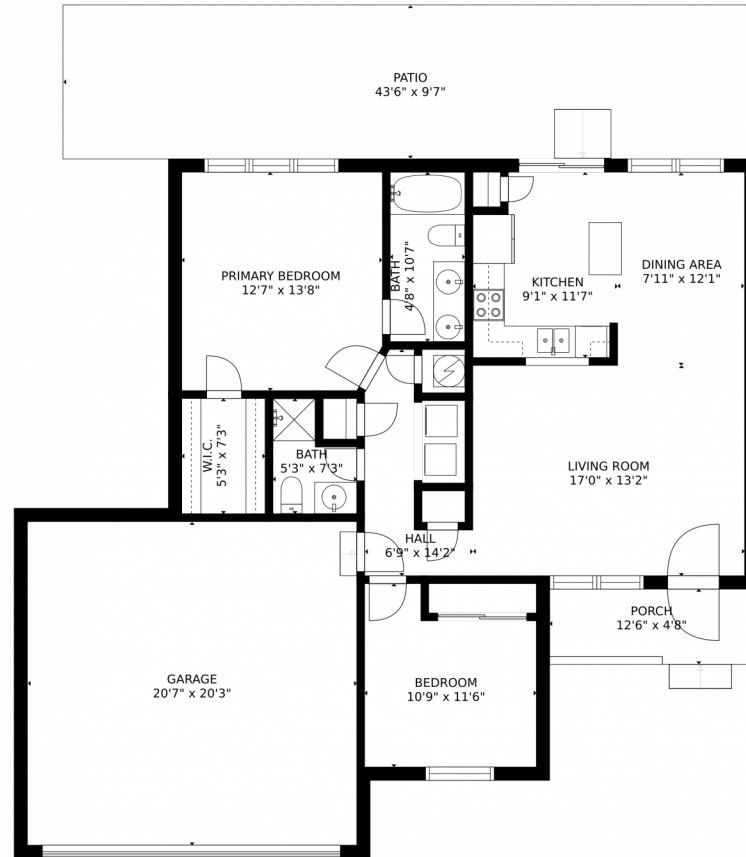
 1 Baths



Taylor Haas
303-665-7368
taylorh@coloradorpm.com
<https://www.coloradorpm.com/available-rental-properties-denver>



6320 Summer Grace Street, Colorado Springs, CO 80923 – Floor Plan



GROSS INTERNAL AREA
FLOOR 1: 976 sq. ft. EXCLUDED AREAS:
GARAGE: 418 sq. ft. PATIO: 420 sq. ft.
PORCH: 62 sq. ft.
TOTAL: 976 sq. ft.

MEASUREMENTS CALCULATED BY V1Photos.COM ARE DEEMED HIGHLY RELIABLE BUT NOT GUARANTEED.



Disclaimer: Sizes and Dimensions are Approximate, Actual May Vary.



Taylor Haas

303-665-7368

taylorh@coloradorpm.com

<https://www.coloradorpm.com/available-rental-properties-denver>



Scan code
for more
property
details

