
 Single Family

 1007 SQFT

 2 Beds

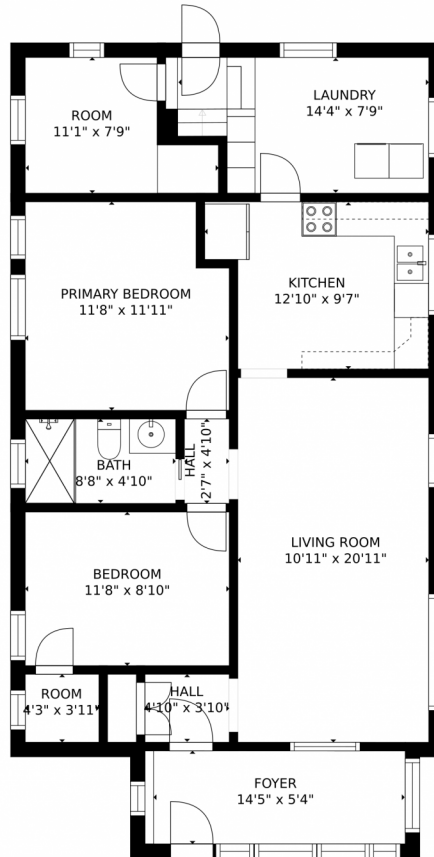
 1 Baths



Taylor Haas
303-665-7368
taylorh@coloradorpm.com
<https://www.coloradorpm.com/available-rental-properties-denver>



1984 S Galapago St, Denver, CO 80223 – Main Level



GROSS INTERNAL AREA
FLOOR 1: 20 sq. ft, FLOOR 2: 994 sq. ft
EXCLUDED AREAS: , REDUCED HEADROOM BELOW 1.5M: 117 sq. ft
UNFINISHED BASEMENT: 694 sq. ft
TOTAL: 1014 sq. ft
MEASUREMENTS CALCULATED BY V1Photos.COM ARE DEEMED HIGHLY RELIABLE BUT NOT GUARANTEED.



Disclaimer: Sizes and Dimensions are Approximate, Actual May Vary.



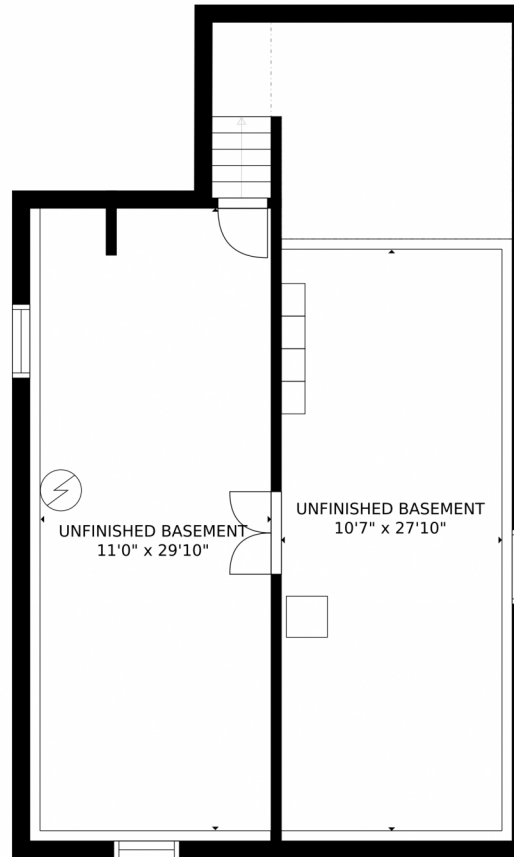
Taylor Haas
303-665-7368
taylorh@coloradorpm.com
<https://www.coloradorpm.com/available-rental-properties-denver>



Scan code
for more
property
details



1984 S Galapago St, Denver, CO 80223 – Lower Level



GROSS INTERNAL AREA
FLOOR 1: 20 sq. ft, FLOOR 2: 994 sq. ft
EXCLUDED AREAS: , REDUCED HEADROOM BELOW 1.5M: 117 sq. ft
UNFINISHED BASEMENT: 694 sq. ft
TOTAL: 1014 sq. ft
MEASUREMENTS CALCULATED BY V1Photos.com ARE DEEMED HIGHLY RELIABLE BUT NOT GUARANTEED.



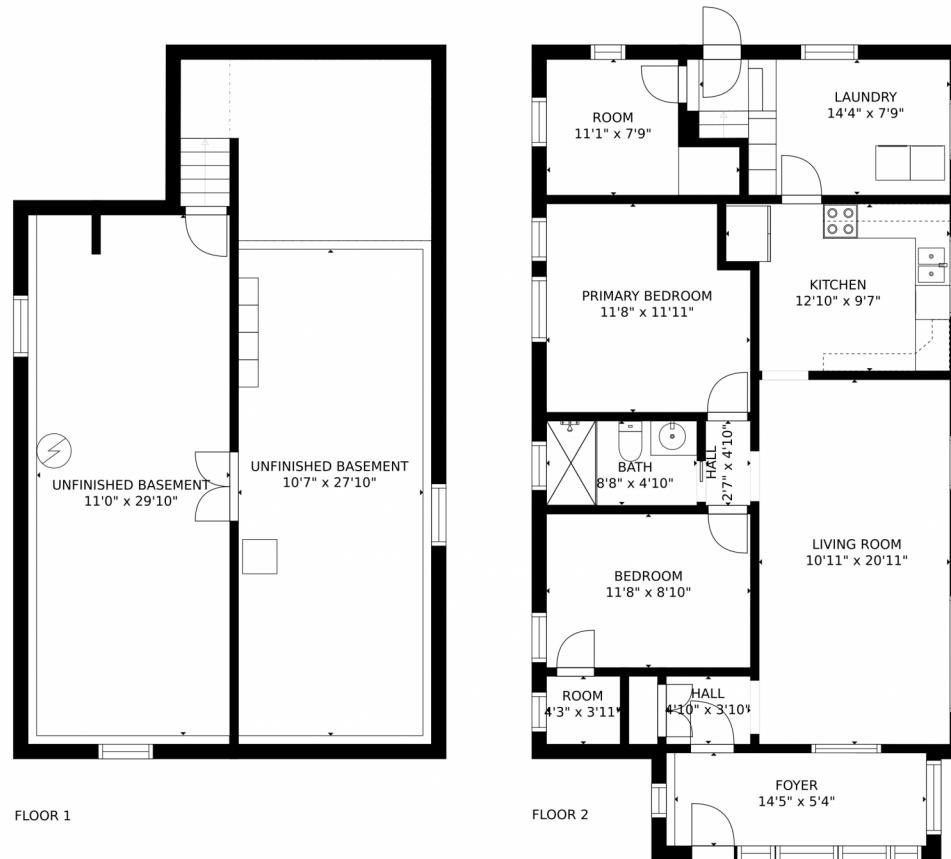
Disclaimer: Sizes and Dimensions are Approximate, Actual May Vary.



Taylor Haas
303-665-7368
taylorh@coloradorpm.com
<https://www.coloradorpm.com/available-rental-properties-denver>



1984 S Galapago St, Denver, CO 80223 – All Levels



GROSS INTERNAL AREA
FLOOR 1: 20 sq. ft, FLOOR 2: 994 sq. ft
EXCLUDED AREAS: , REDUCED HEADROOM BELOW 1.5M: 117 sq. ft
UNFINISHED BASEMENT: 694 sq. ft
TOTAL: 1014 sq. ft
MEASUREMENTS CALCULATED BY V1Photos.COM ARE DEEMED HIGHLY RELIABLE BUT NOT GUARANTEED.



Disclaimer: Sizes and Dimensions are Approximate, Actual May Vary.



Taylor Haas
303-665-7368
taylorh@coloradorpm.com
<https://www.coloradorpm.com/available-rental-properties-denver>

