



Single Family



1782 SQFT



3 Beds



2/1 Baths



**Taylor Haas**

303-665-7368

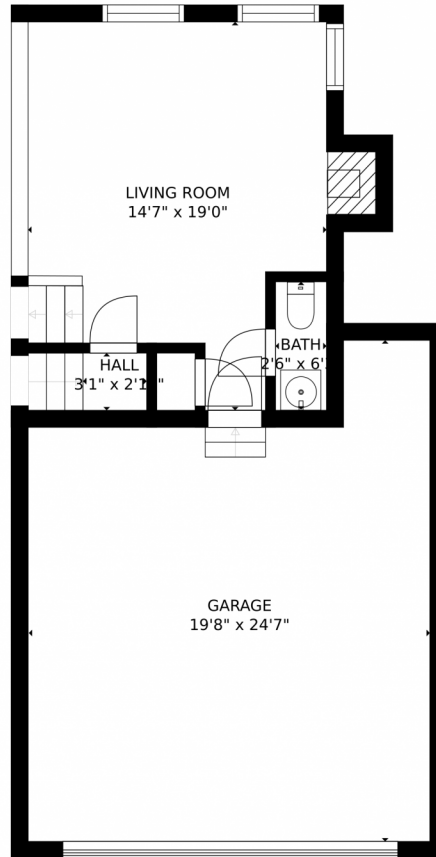
taylorh@coloradorpm.com

<https://www.coloradorpm.com/available-rental-properties-denver>

Scan code  
for more  
property  
details



# 8689 Cloverleaf Circle, Parker, CO 80134 – Main Level



GROSS INTERNAL AREA  
FLOOR 1: 326 sq. ft, FLOOR 2: 285 sq. ft  
FLOOR 3: 383 sq. ft, FLOOR 4: 646 sq. ft  
EXCLUDED AREAS: , GARAGE: 417 sq. ft  
DECK: 81 sq. ft, PORCH: 80 sq. ft  
TOTAL: 1641 sq. ft

MEASUREMENTS CALCULATED BY V1Photos.com ARE DEEMED HIGHLY RELIABLE BUT NOT GUARANTEED.



Disclaimer: Sizes and Dimensions are Approximate, Actual May Vary.



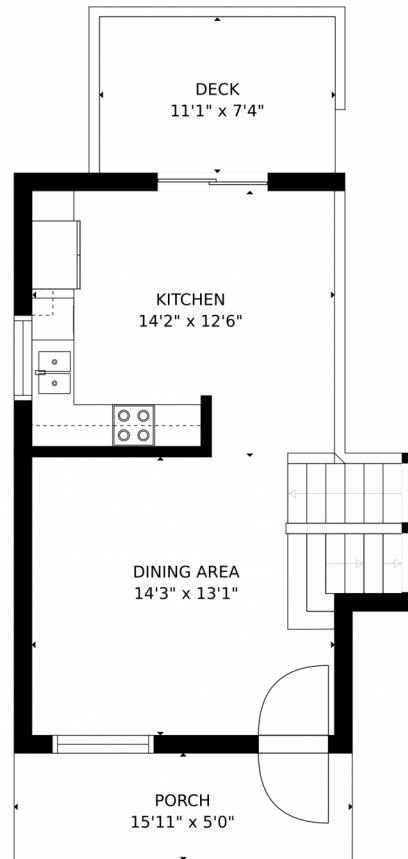
**Taylor Haas**  
303-665-7368  
taylorh@coloradorpm.com  
<https://www.coloradorpm.com/available-rental-properties-denver>



Scan code  
for more  
property  
details



# 8689 Cloverleaf Circle, Parker, CO 80134 – 2nd Level



GROSS INTERNAL AREA  
FLOOR 1: 326 sq. ft. FLOOR 2: 285 sq. ft.  
FLOOR 3: 383 sq. ft. FLOOR 4: 646 sq. ft.  
EXCLUDED AREAS: GARAGE: 417 sq. ft.  
DECK: 81 sq. ft. PORCH: 80 sq. ft.  
TOTAL: 1641 sq. ft.

MEASUREMENTS CALCULATED BY V1Photos.com ARE DEEMED HIGHLY RELIABLE BUT NOT GUARANTEED.



Disclaimer: Sizes and Dimensions are Approximate, Actual May Vary.



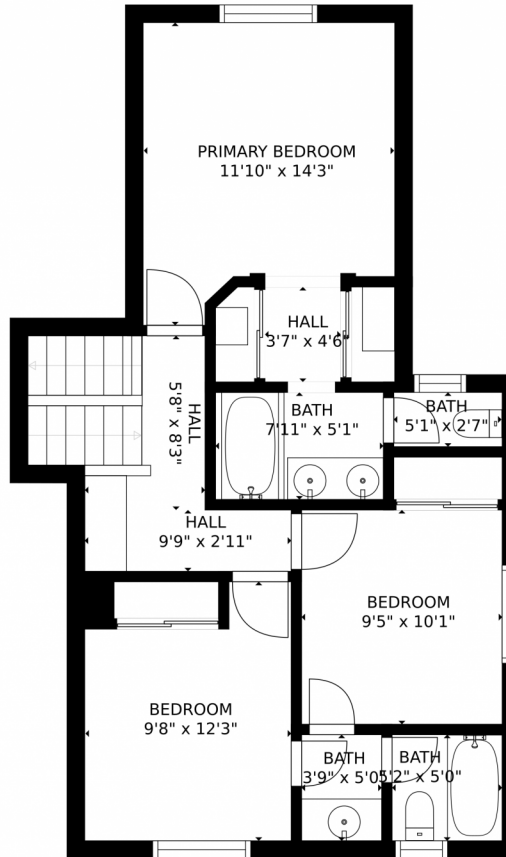
**Taylor Haas**  
303-665-7368  
taylorh@coloradorpm.com  
<https://www.coloradorpm.com/available-rental-properties-denver>



Scan code  
for more  
property  
details







GROSS INTERNAL AREA  
FLOOR 1: 326 sq. ft. FLOOR 2: 285 sq. ft.  
FLOOR 3: 383 sq. ft. FLOOR 4: 646 sq. ft.  
EXCLUDED AREAS: GARAGE: 417 sq. ft.  
DECK: 81 sq. ft. PORCH: 80 sq. ft.  
TOTAL: 1641 sq. ft.

MEASUREMENTS CALCULATED BY V1Photos.com ARE DEEMED HIGHLY RELIABLE BUT NOT GUARANTEED.



Disclaimer: Sizes and Dimensions are Approximate, Actual May Vary.



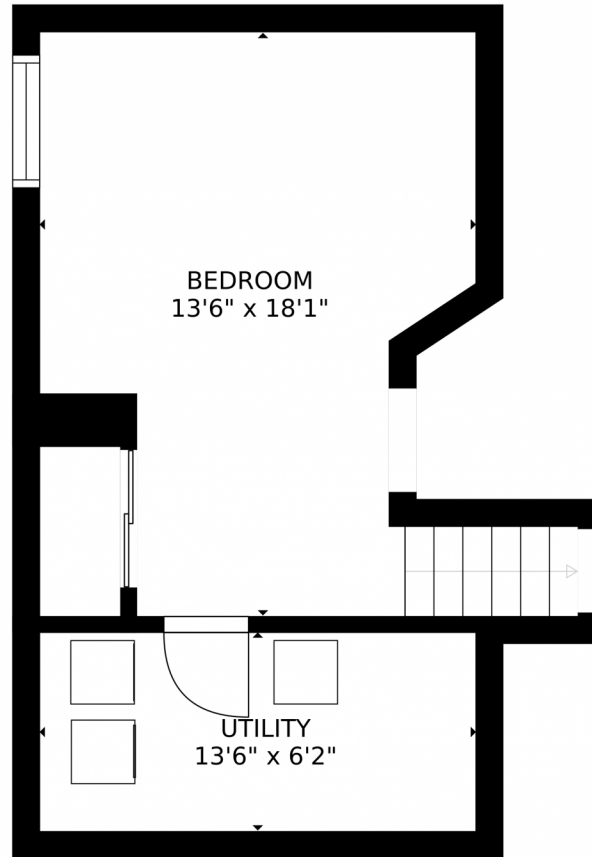
**Taylor Haas**  
303-665-7368  
taylorh@coloradorpm.com  
<https://www.coloradorpm.com/available-rental-properties-denver>



Scan code  
for more  
property  
details



8689 Cloverleaf Circle, Parker, CO 80134 – Lower Level



GROSS INTERNAL AREA  
FLOOR 1: 326 sq. ft, FLOOR 2: 285 sq. ft  
FLOOR 3: 383 sq. ft, FLOOR 4: 646 sq. ft  
EXCLUDED AREAS: GARAGE: 417 sq. ft  
DECK: 81 sq. ft, PORCH: 80 sq. ft  
TOTAL: 1641 sq. ft

MEASUREMENTS CALCULATED BY V1Photos.com ARE DEEMED HIGHLY RELIABLE BUT NOT GUARANTEED.



Disclaimer: Sizes and Dimensions are Approximate, Actual May Vary.



**Taylor Haas**  
303-665-7368  
taylorh@coloradorpm.com  
<https://www.coloradorpm.com/available-rental-properties-denver>



Scan code  
for more  
property  
details

# 8689 Cloverleaf Circle, Parker, CO 80134 – All Levels



GROSS INTERNAL AREA  
FLOOR 1: 326 sq. ft. FLOOR 2: 285 sq. ft.  
FLOOR 3: 383 sq. ft. FLOOR 4: 646 sq. ft.  
EXCLUDED AREAS: GARAGE: 417 sq. ft.  
DECK: 81 sq. ft. PORCH: 80 sq. ft.  
TOTAL: 1641 sq. ft.

MEASUREMENTS CALCULATED BY V1Photos.com ARE DEEMED HIGHLY RELIABLE BUT NOT GUARANTEED.



Disclaimer: Sizes and Dimensions are Approximate, Actual May Vary.



**Taylor Haas**  
303-665-7368  
taylorh@coloradorpm.com  
<https://www.coloradorpm.com/available-rental-properties-denver>

