





 Single Family

 1617 SQFT

 3 Beds

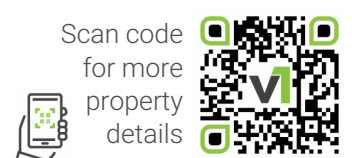
 2/1 Baths

 1 Car

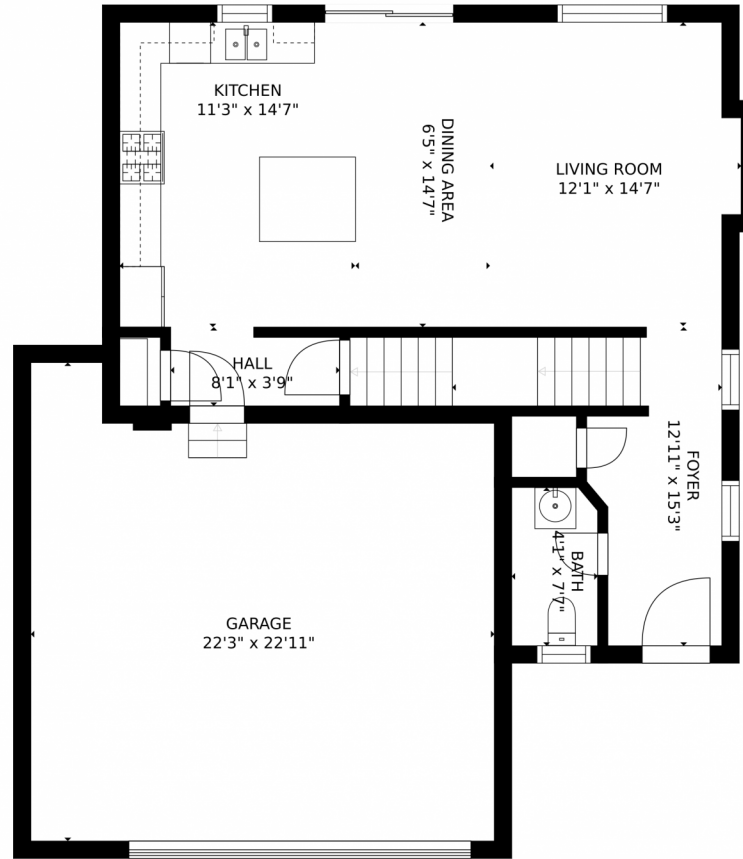
 0.12 Acre



**Annette Avery**  
720-990-3773  
annette@newagere.com



17995 East 107th Place, Commerce City, CO 80022 – Main Level



GROSS INTERNAL AREA  
FLOOR 1: 7 sq. ft., FLOOR 2: 651 sq. ft.  
FLOOR 3: 895 sq. ft., EXCLUDED AREAS:  
UNFINISHED BASEMENT: 580 sq. ft., GARAGE: 455 sq. ft.  
TOTAL: 1554 sq. ft.  
MEASUREMENTS CALCULATED BY V1Photos.COM ARE DEEMED HIGHLY RELIABLE BUT NOT GUARANTEED.



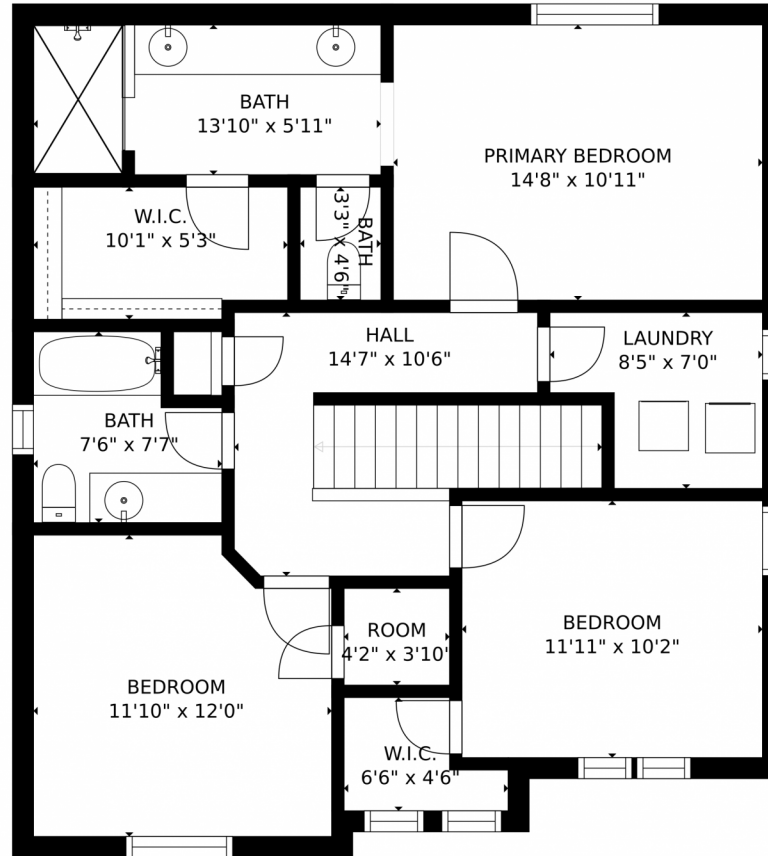
Disclaimer: Sizes and Dimensions are Approximate, Actual May Vary.



Annette Avery  
720-990-3773  
annette@newagere.com



17995 East 107th Place, Commerce City, CO 80022 – Upper Level



GROSS INTERNAL AREA  
FLOOR 1: 7 sq. ft., FLOOR 2: 651 sq. ft.  
FLOOR 3: 895 sq. ft., EXCLUDED AREAS:  
UNFINISHED BASEMENT: 580 sq. ft., GARAGE: 455 sq. ft.  
TOTAL: 1554 sq. ft.  
MEASUREMENTS CALCULATED BY V1Photos.com ARE DEEMED HIGHLY RELIABLE BUT NOT GUARANTEED.



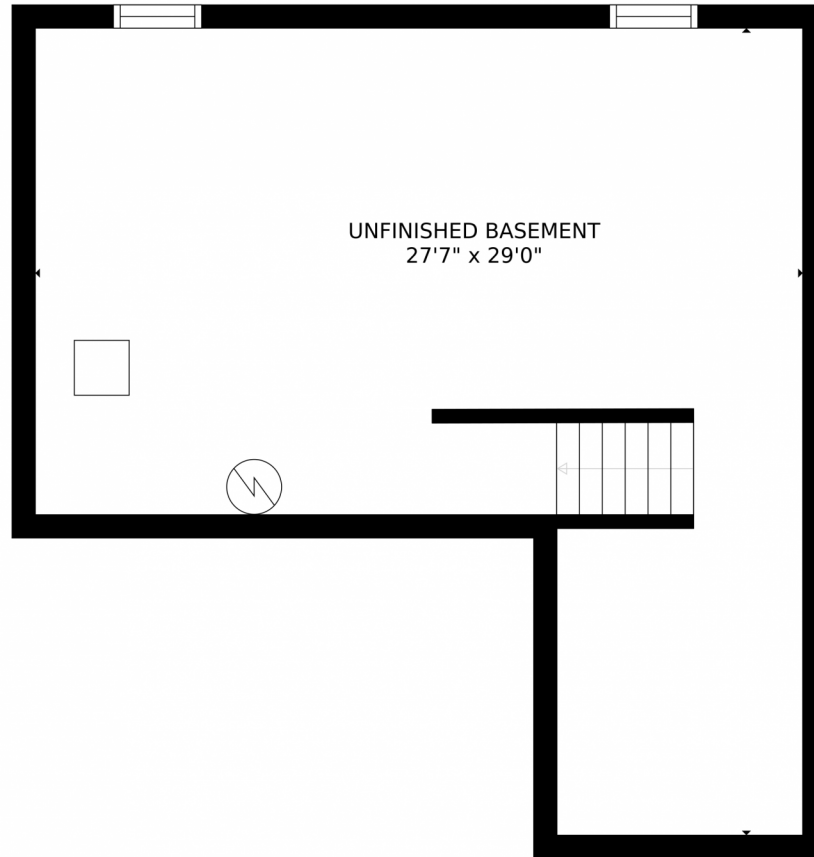
Disclaimer: Sizes and Dimensions are Approximate, Actual May Vary.



Annette Avery  
720-990-3773  
annette@newagere.com



17995 East 107th Place, Commerce City, CO 80022 – Lower Level



GROSS INTERNAL AREA  
FLOOR 1: 7 sq. ft., FLOOR 2: 651 sq. ft.  
FLOOR 3: 895 sq. ft., EXCLUDED AREAS:  
UNFINISHED BASEMENT: 580 sq. ft., GARAGE: 455 sq. ft.  
TOTAL: 1554 sq. ft.  
MEASUREMENTS CALCULATED BY V1Photos.com ARE DEEMED HIGHLY RELIABLE BUT NOT GUARANTEED.



Disclaimer: Sizes and Dimensions are Approximate, Actual May Vary.

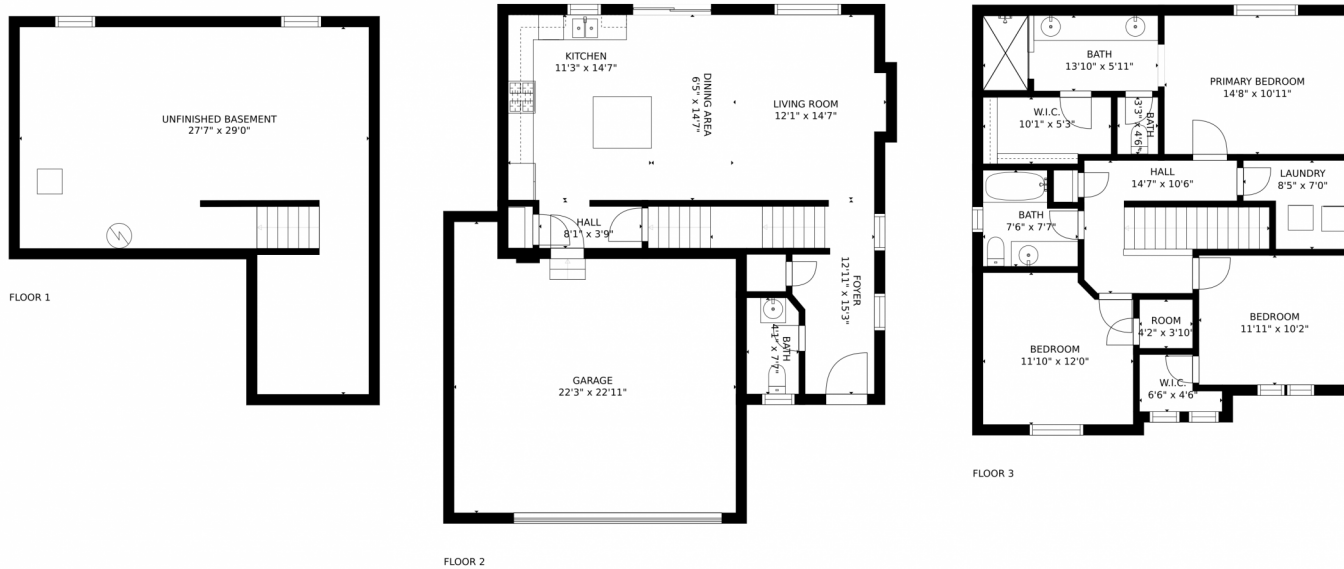


**Annette Avery**  
720-990-3773  
annette@newagere.com





# 17995 East 107th Place, Commerce City, CO 80022 – All Levels



GROSS INTERNAL AREA  
FLOOR 1: 7 sq. ft, FLOOR 2: 651 sq. ft  
FLOOR 3: 895 sq. ft, EXCLUDED AREAS:  
UNFINISHED BASEMENT: 580 sq. ft, GARAGE: 455 sq. ft  
TOTAL: 1554 sq. ft  
MEASUREMENTS CALCULATED BY V1Photos.COM ARE DEEMED HIGHLY RELIABLE BUT NOT GUARANTEED.



Disclaimer: Sizes and Dimensions are Approximate, Actual May Vary.



Annette Avery  
720-990-3773  
annette@newagere.com

