



18531 E Radcliff Place
Aurora, CO 80015
COMMUNITY: Water's Edge

MLS # 3992108
PRICE \$725,000



Single Family



3981 SQFT



4 Beds



3/1 Baths



3 Car



0.29 Acre

PROPERTY DETAILS

The very rarest of locations (Picturesque Waterfront with Mountain Views) - 100% incredible. Your neighbors include deer, fox, eagles, hawks, ducks, geese, birds of every shape and color, rainbow trout...you get the point. OUTSTANDING - There are at least 15 windows having Lake and/or mountain views. This is located in a super quiet & safe Cul-de-Sac location, plus you have tons of parking on the extended driveway! The floor plan is amazing and feels grand throughout. Over 740 sqft of multi-level decking (With enclosed Hot Tub). Huge Pro-landscaped lot, with over 12,850 SQFT. Truly has all the features you look for: 4bd, 4ba, 2 Story, lake front location, Finished Basement - (9+ foot Ceilings), Rec Room, Huge 4th Bedroom with walk-in Closet, 3/4 Bath, and great storage area. Over-sized 3 Car Garage, Loft, Main Floor Study, Main Floor Laundry, Tons & Tons of Great Storage, Cherry Creek Schools. Outstanding Lakefront Location, Outstanding Neighborhood Location, Outstanding Floorplan, & the VIEWS will KNOCK YOUR SOCKS OFF! Absolutely designed to delight & Built to Endure...Dazzling Eat-in kitchen. Large comfortable Family Room. Gracious Living & Dining Rooms. Don't miss this opportunity to own an exceptionally rare property....See it today!



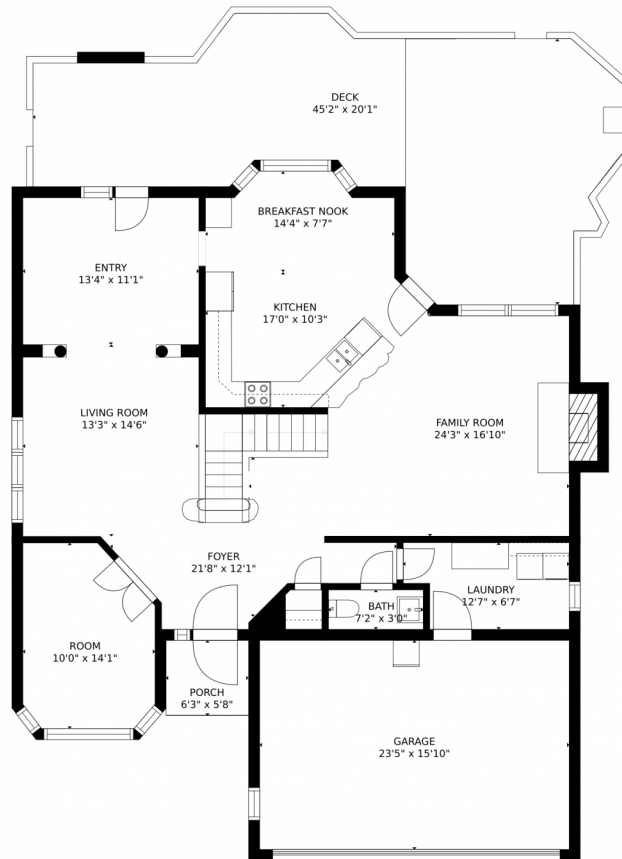
Shawn Engel
303-308-8000
shawnengel@earthlink.net
<http://www.corealestateonline.com>



Scan code
for more
property
details



18531 E Radcliff Place, Aurora, CO 80015 – Main Level



GROSS INTERNAL AREA
FLOOR 1: 1183 sq. ft. FLOOR 2: 1333 sq. ft.
FLOOR 3: 1166 sq. ft. EXCLUDED AREAS:
GARAGE: 370 sq. ft. DECK: 586 sq. ft.
PORCH: 36 sq. ft.
TOTAL: 3683 sq. ft.

MEASUREMENTS CALCULATED BY V1Photos.com ARE DEEMED HIGHLY RELIABLE BUT NOT GUARANTEED.



Disclaimer: Sizes and Dimensions are Approximate, Actual May Vary.



Shawn Engel
303-308-8000
shawnengel@earthlink.net
<http://www.corealestateonline.com>



Scan code
for more
property
details





GROSS INTERNAL AREA
FLOOR 1: 1183 sq. ft, FLOOR 2: 1333 sq. ft
FLOOR 3: 1166 sq. ft, EXCLUDED AREAS:
GARAGE: 370 sq. ft, DECK: 586 sq. ft
PORCH: 36 sq. ft
TOTAL: 3683 sq. ft

MEASUREMENTS CALCULATED BY V1Photos.com ARE DEEMED HIGHLY RELIABLE BUT NOT GUARANTEED.



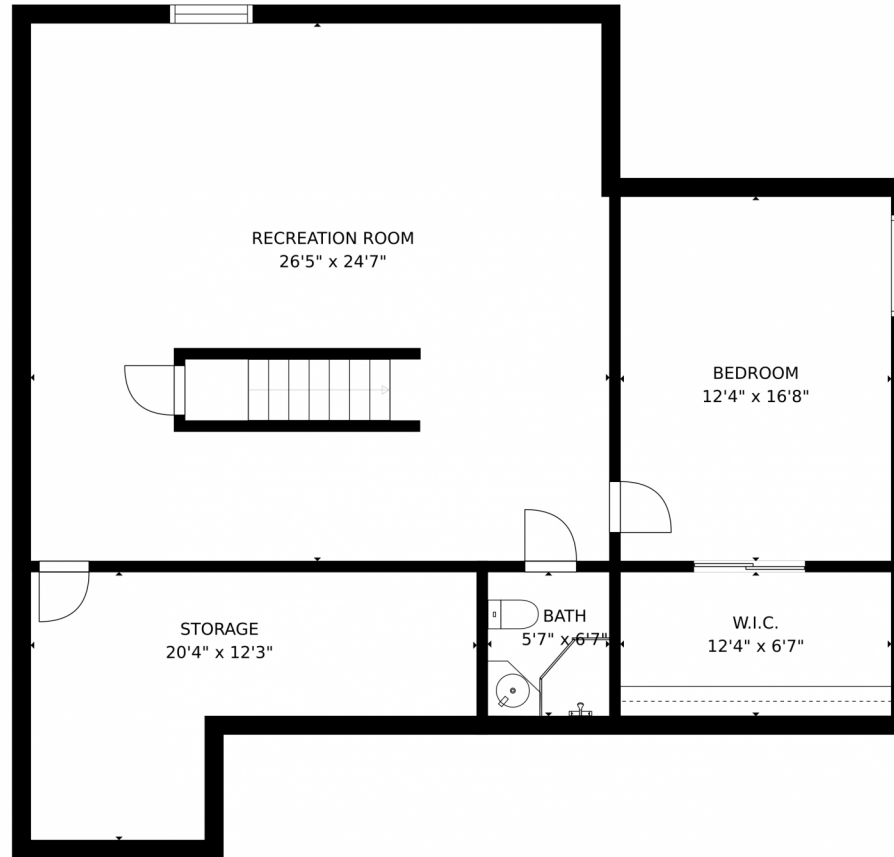
Disclaimer: Sizes and Dimensions are Approximate, Actual May Vary.



Shawn Engel
303-308-8000
shawnengel@earthlink.net
<http://www.corealestateonline.com>



18531 E Radcliff Place, Aurora, CO 80015 – Lower Level



GROSS INTERNAL AREA
FLOOR 1: 1183 sq. ft. FLOOR 2: 1333 sq. ft.
FLOOR 3: 1166 sq. ft. EXCLUDED AREAS:
GARAGE: 370 sq. ft. DECK: 586 sq. ft.
PORCH: 36 sq. ft.
TOTAL: 3683 sq. ft.

MEASUREMENTS CALCULATED BY V1Photos.com ARE DEEMED HIGHLY RELIABLE BUT NOT GUARANTEED.



Disclaimer: Sizes and Dimensions are Approximate, Actual May Vary.



Shawn Engel
303-308-8000
shawnengel@earthlink.net
<http://www.corealestateonline.com>



18531 E Radcliff Place, Aurora, CO 80015 – All Levels



GROSS INTERNAL AREA
FLOOR 1: 1183 sq. ft, FLOOR 2: 1333 sq. ft
FLOOR 3: 1166 sq. ft, EXCLUDED AREAS:
GARAGE: 370 sq. ft, DECK: 586 sq. ft
PORCH: 36 sq. ft
TOTAL: 3683 sq. ft

MEASUREMENTS CALCULATED BY V1Photos.com ARE DEEMED HIGHLY RELIABLE BUT NOT GUARANTEED.



Disclaimer: Sizes and Dimensions are Approximate, Actual May Vary.



Shawn Engel
303-308-8000
shawnengel@earthlink.net
<http://www.corealestateonline.com>

