




4424 Portillo Place
 Colorado Springs, CO 80924
 COMMUNITY: Cordera



 Single Family

 3234 SQFT

 3 Beds

 3 Baths

 2 Car

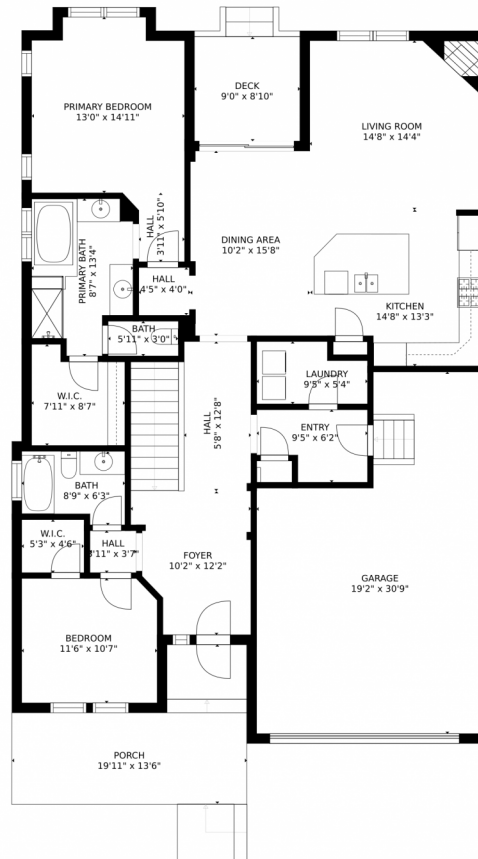
 0.18 Acre



Eddie Hurt
 719-339-3765
 ehurt@erashields.com
<https://www.ColoradoSpringsRealEstate.com>



4424 Portillo Place, Colorado Springs, CO 80924 – Main Level



GROSS INTERNAL AREA
FLOOR 1: 942 sq. ft, FLOOR 2: 1577 sq. ft
EXCLUDED AREAS: , UNFINISHED BASEMENT: 451 sq. ft
GARAGE: 492 sq. ft, DECK: 80 sq. ft
PORCH: 195 sq. ft
TOTAL: 2519 sq. ft

MEASUREMENTS CALCULATED BY V1Photos.COM ARE DEEMED HIGHLY RELIABLE BUT NOT GUARANTEED.



Disclaimer: Sizes and Dimensions are Approximate, Actual May Vary.



Eddie Hurt

719-339-3765

ehurt@erashields.com

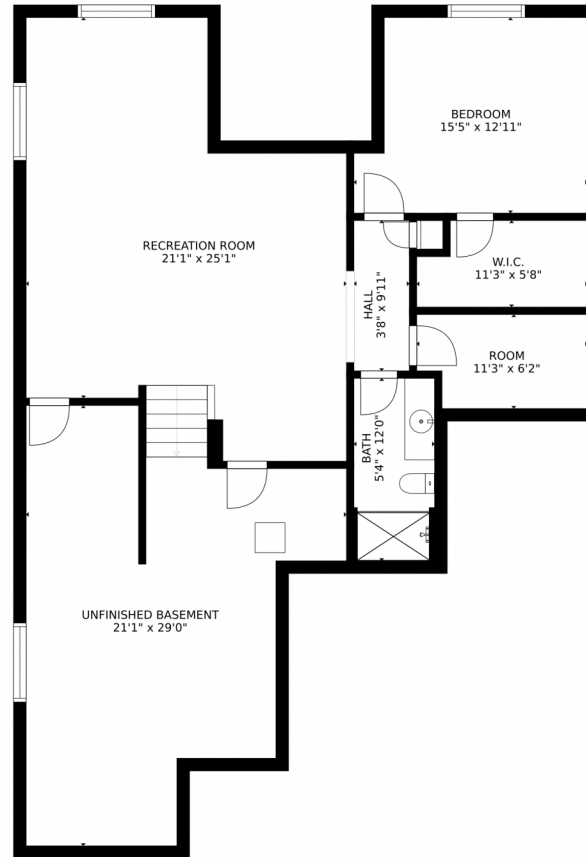
<https://www.ColoradoSpringsRealEstate.com>



Scan code
for more
property
details



4424 Portillo Place, Colorado Springs, CO 80924 – Lower Level



GROSS INTERNAL AREA
FLOOR 1: 942 sq. ft, FLOOR 2: 1577 sq. ft
EXCLUDED AREAS: , UNFINISHED BASEMENT: 451 sq. ft
GARAGE: 492 sq. ft, DECK: 80 sq. ft
PORCH: 195 sq. ft
TOTAL: 2519 sq. ft

MEASUREMENTS CALCULATED BY V1Photos.COM ARE DEEMED HIGHLY RELIABLE BUT NOT GUARANTEED.



Disclaimer: Sizes and Dimensions are Approximate, Actual May Vary.



Eddie Hurt

719-339-3765

ehurt@erashields.com

<https://www.ColoradoSpringsRealEstate.com>



Scan code
for more
property
details



4424 Portillo Place, Colorado Springs, CO 80924 – All Levels



GROSS INTERNAL AREA
FLOOR 1: 942 sq. ft., FLOOR 2: 1577 sq. ft.
EXCLUDED AREAS: , UNFINISHED BASEMENT: 451 sq. ft.
GARAGE: 492 sq. ft., DECK: 80 sq. ft.
PORCH: 195 sq. ft.
TOTAL: 2519 sq. ft.

MEASUREMENTS CALCULATED BY V1Photos.COM ARE DEEMED HIGHLY RELIABLE BUT NOT GUARANTEED.



Disclaimer: Sizes and Dimensions are Approximate, Actual May Vary.



Eddie Hurt

719-339-3765

ehurt@erashields.com

<https://www.ColoradoSpringsRealEstate.com>



Scan code
for more
property
details

