



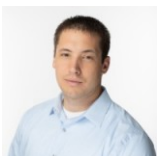
518 Placid Road
Colorado Springs, CO 80910



Single Family



1704 SQFT



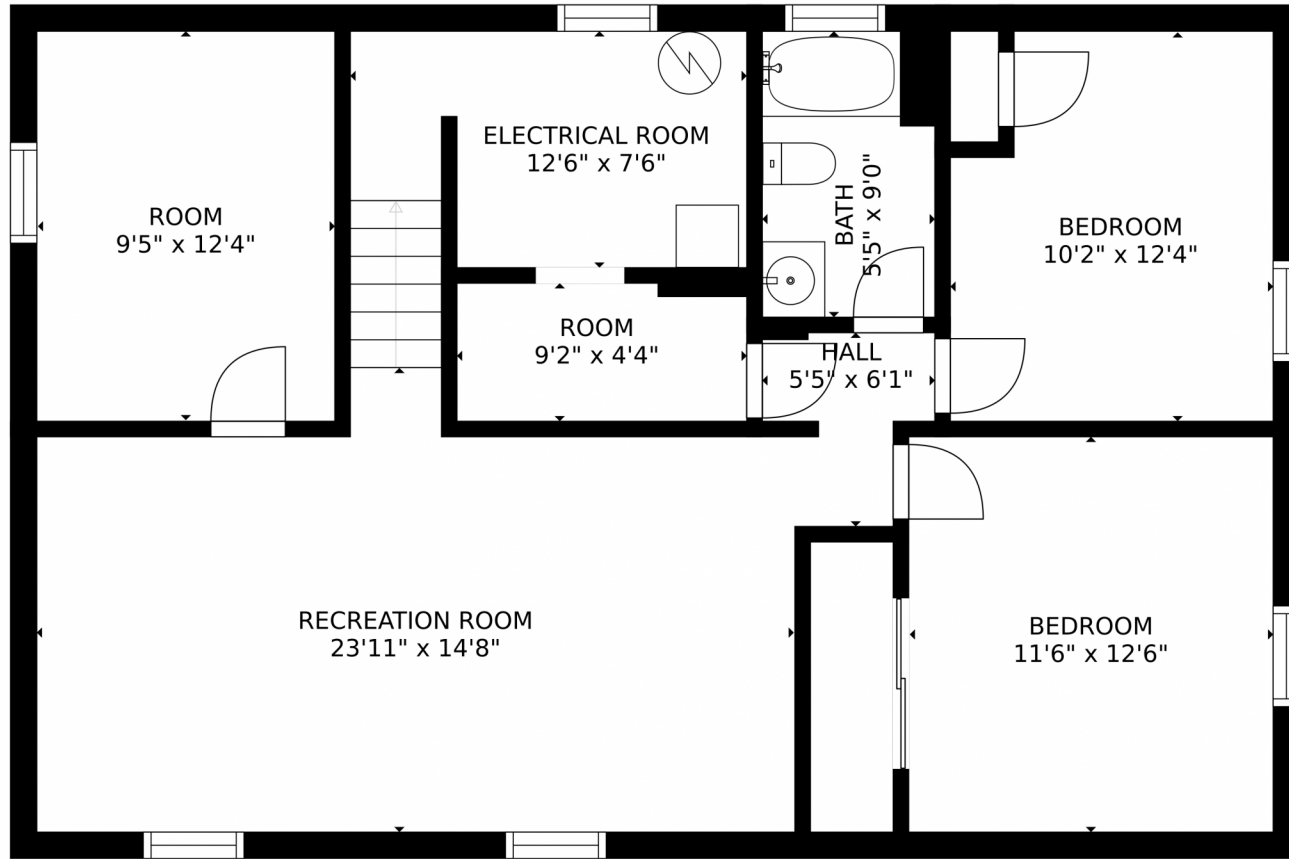
Jordan Kermes
952-956-2958
jordan@kermesllc.com



Scan code
for more
property
details



518 Placid Road, Colorado Springs, CO 80910 – Lower Level



GROSS INTERNAL AREA
FLOOR 1: 990 sq. ft, FLOOR 2: 990 sq. ft
EXCLUDED AREAS: , PATIO: 167 sq. ft
TOTAL: 1979 sq. ft
MEASUREMENTS CALCULATED BY V1Photos.COM ARE DEEMED HIGHLY RELIABLE BUT NOT GUARANTEED.

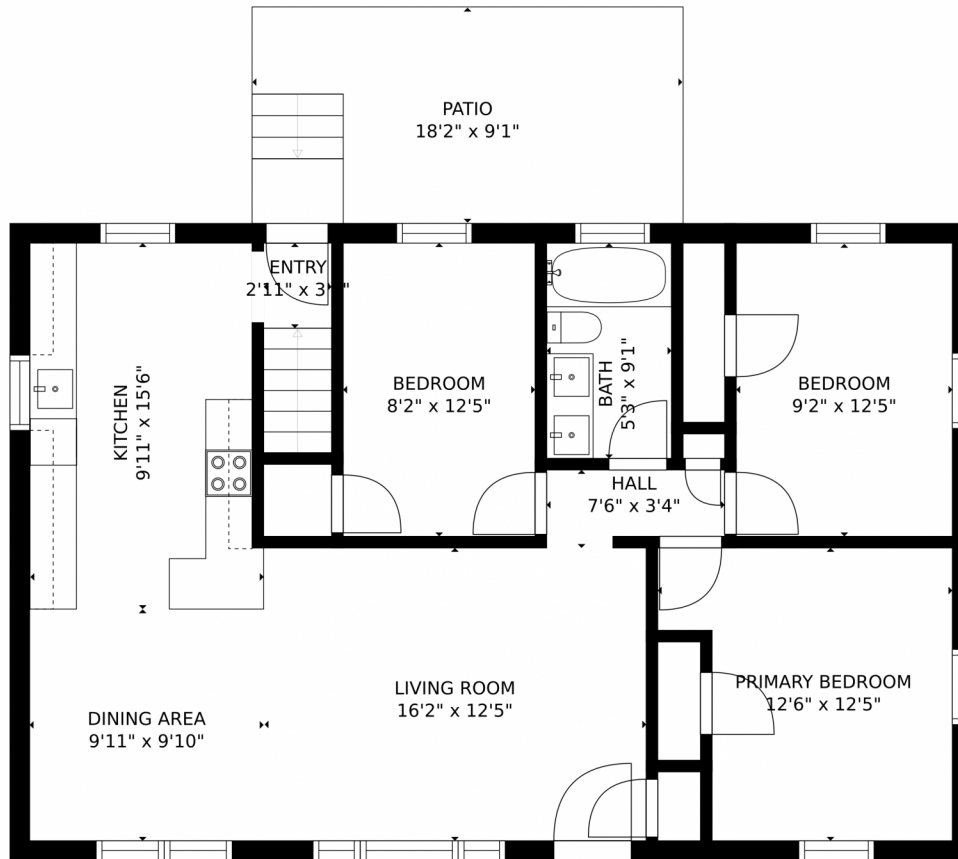
Disclaimer: Sizes and Dimensions are Approximate, Actual May Vary.



Jordan Kermes
952-956-2958
jordan@kermesllc.com



518 Placid Road, Colorado Springs, CO 80910 – Main Level



GROSS INTERNAL AREA
FLOOR 1: 990 sq. ft. FLOOR 2: 990 sq. ft
EXCLUDED AREAS: , PATIO: 167 sq. ft
TOTAL: 1979 sq. ft
MEASUREMENTS CALCULATED BY V1Photos.com ARE DEEMED HIGHLY RELIABLE BUT NOT GUARANTEED.



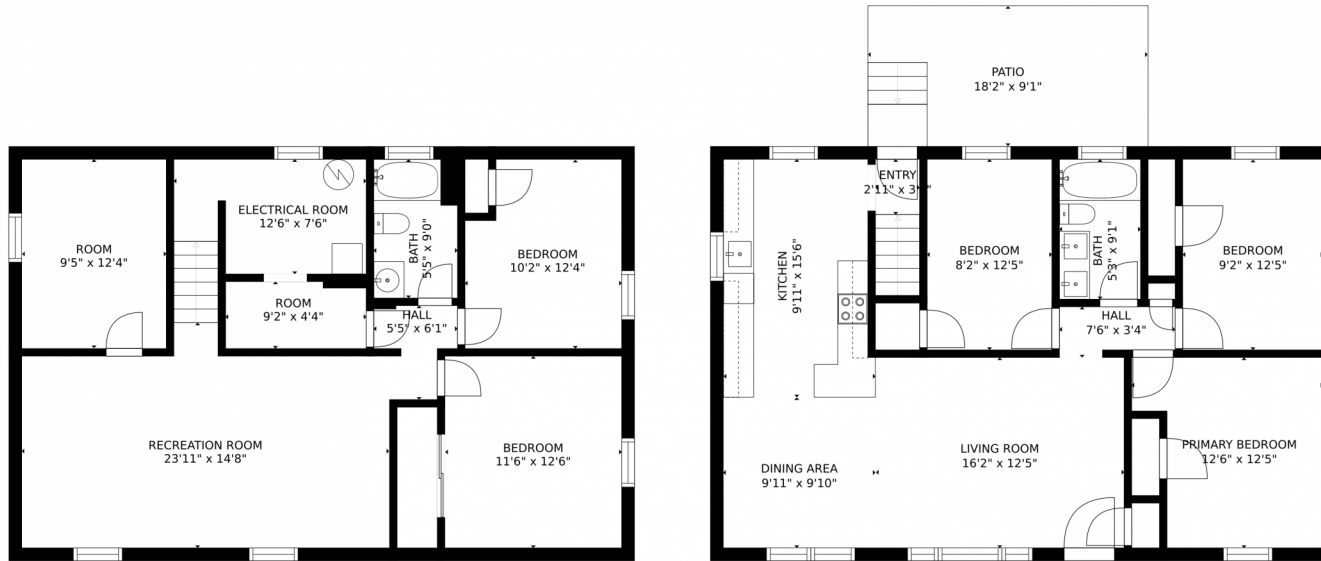
Disclaimer: Sizes and Dimensions are Approximate, Actual May Vary.



Jordan Kermes
952-956-2958
jordan@kermesllc.com



518 Placid Road, Colorado Springs, CO 80910 – All Levels



FLOOR 1

FLOOR 2

GROSS INTERNAL AREA
FLOOR 1: 990 sq. ft, FLOOR 2: 990 sq. ft
EXCLUDED AREAS: , PATIO: 167 sq. ft
TOTAL: 1979 sq. ft
MEASUREMENTS CALCULATED BY V1Photos.COM ARE DEEMED HIGHLY RELIABLE BUT NOT GUARANTEED.



Disclaimer: Sizes and Dimensions are Approximate, Actual May Vary.



Jordan Kermes
952-956-2958
jordan@kermesllc.com

