


3755 Silver Rock Cir  
Castle Rock, CO 80108



 Single Family

 800 SQFT

 1 Bed

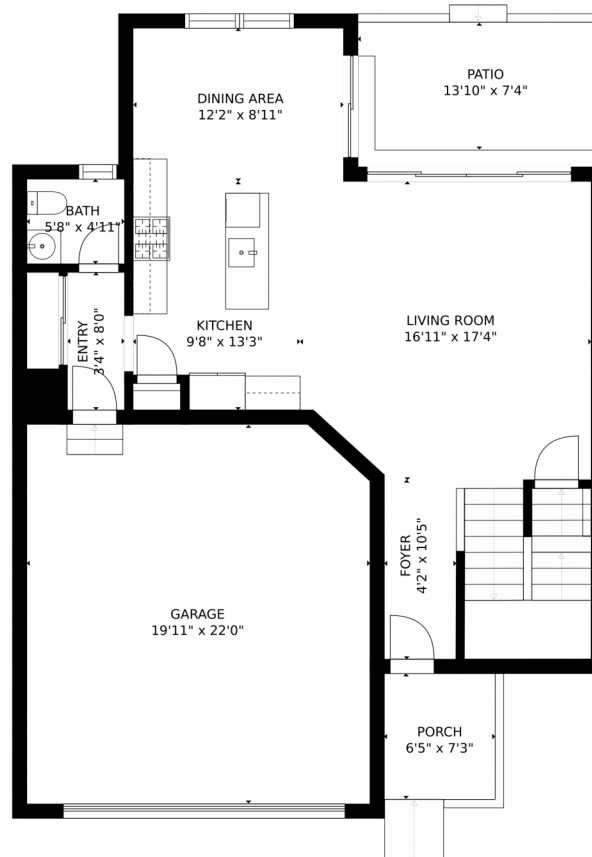
 1 Baths



**Taylor Haas**  
303-665-7368  
taylorh@coloradorpm.com  
<https://www.coloradorpm.com/available-rental-properties-denver>



# 3755 Silver Rock Cir, Castle Rock, CO 80108 – Main Level



GROSS INTERNAL AREA  
FLOOR 1: 0 sq. ft., FLOOR 2: 725 sq. ft.  
FLOOR 3: 1024 sq. ft., EXCLUDED AREAS:  
UNFINISHED BASEMENT: 681 sq. ft., GARAGE: 432 sq. ft.  
PATIO: 116 sq. ft., PORCH: 47 sq. ft.  
TOTAL: 1749 sq. ft.  
MEASUREMENTS CALCULATED BY V1Photos.com ARE DEEMED HIGHLY RELIABLE BUT NOT GUARANTEED.



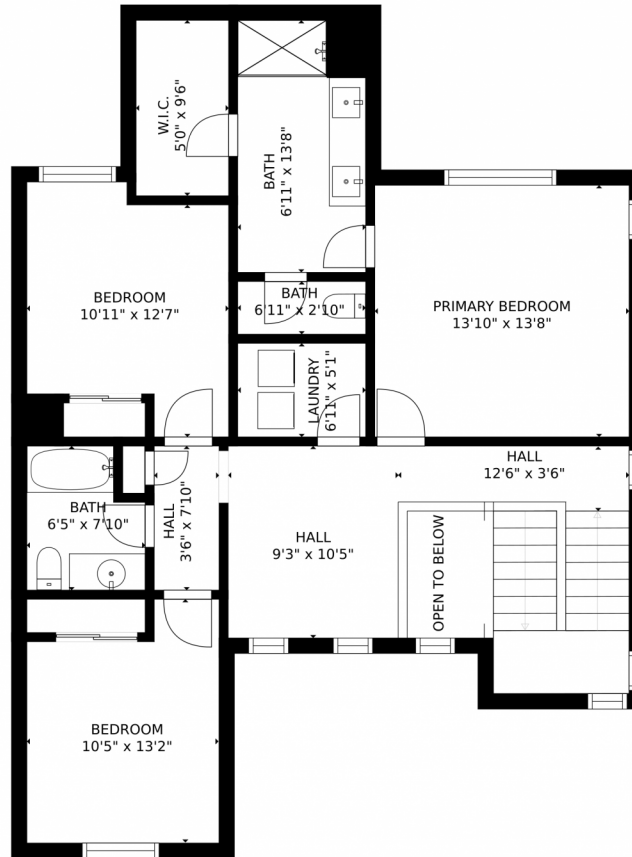
Disclaimer: Sizes and Dimensions are Approximate, Actual May Vary.



**Taylor Haas**  
303-665-7368  
taylorh@coloradorpm.com  
<https://www.coloradorpm.com/available-rental-properties-denver>



# 3755 Silver Rock Cir, Castle Rock, CO 80108 – 2nd Level



GROSS INTERNAL AREA  
FLOOR 1: 0 sq. ft., FLOOR 2: 725 sq. ft.  
FLOOR 3: 1024 sq. ft., EXCLUDED AREAS:  
UNFINISHED BASEMENT: 681 sq. ft., GARAGE: 432 sq. ft.  
PATIO: 116 sq. ft., PORCH: 47 sq. ft.  
TOTAL: 1749 sq. ft.  
MEASUREMENTS CALCULATED BY V1Photos.COM ARE DEEMED HIGHLY RELIABLE BUT NOT GUARANTEED.



Disclaimer: Sizes and Dimensions are Approximate, Actual May Vary.

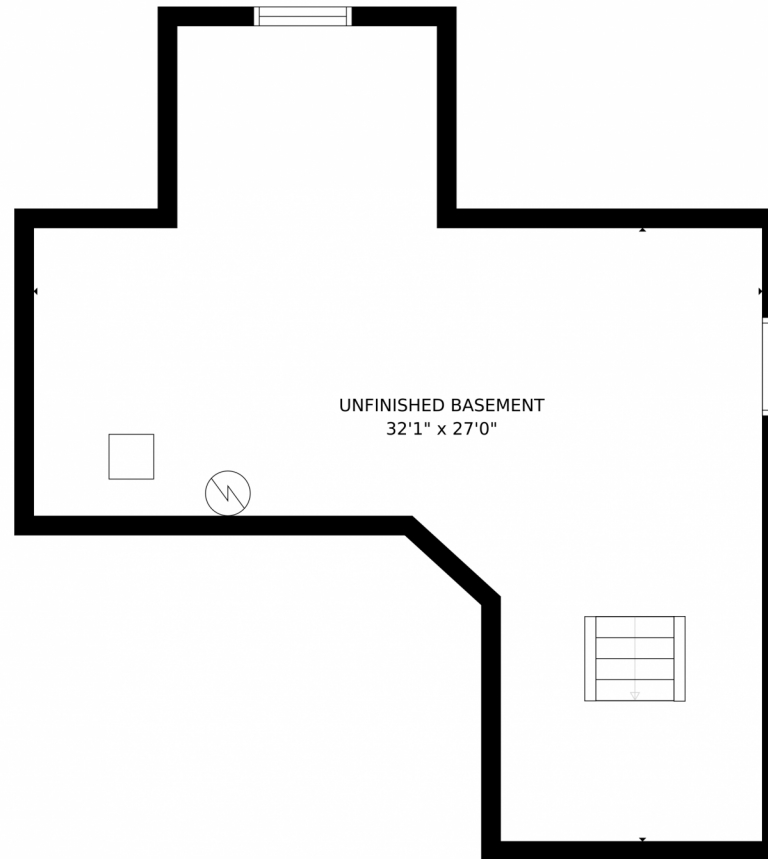


**Taylor Haas**  
303-665-7368  
taylorh@coloradorpm.com  
<https://www.coloradorpm.com/available-rental-properties-denver>



Scan code  
for more  
property  
details





GROSS INTERNAL AREA  
FLOOR 1: 0 sq. ft., FLOOR 2: 725 sq. ft.  
FLOOR 3: 1024 sq. ft., EXCLUDED AREAS:  
UNFINISHED BASEMENT: 681 sq. ft., GARAGE: 432 sq. ft.  
PATIO: 116 sq. ft., PORCH: 47 sq. ft.  
TOTAL: 1749 sq. ft.

MEASUREMENTS CALCULATED BY V1Photos.COM ARE DEEMED HIGHLY RELIABLE BUT NOT GUARANTEED.



Disclaimer: Sizes and Dimensions are Approximate, Actual May Vary.



**Taylor Haas**

303-665-7368

taylorh@coloradorpm.com

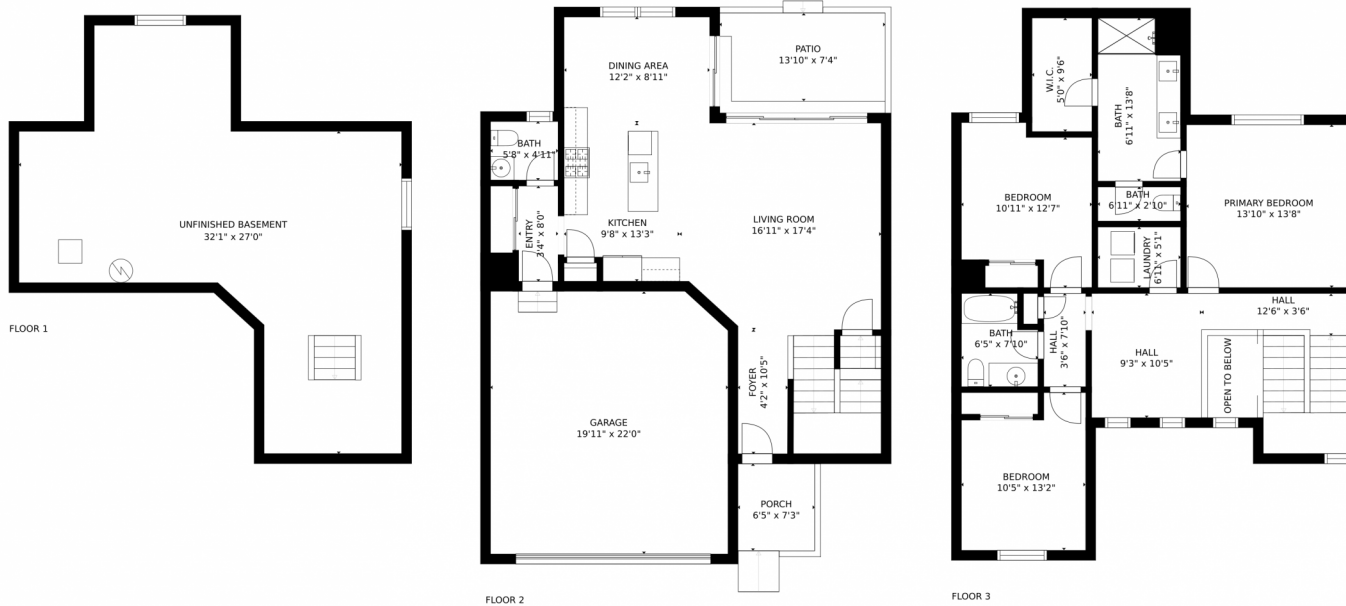
<https://www.coloradorpm.com/available-rental-properties-denver>



Scan code  
for more  
property  
details



# 3755 Silver Rock Cir, Castle Rock, CO 80108 – All Levels



GROSS INTERNAL AREA  
FLOOR 1: 0 sq. ft., FLOOR 2: 725 sq. ft.  
FLOOR 3: 1024 sq. ft., EXCLUDED AREAS:  
UNFINISHED BASEMENT: 681 sq. ft., GARAGE: 432 sq. ft.  
PATIO: 116 sq. ft., PORCH: 47 sq. ft.  
TOTAL: 1749 sq. ft.

MEASUREMENTS CALCULATED BY V1Photos.COM ARE DEEMED HIGHLY RELIABLE BUT NOT GUARANTEED.



Disclaimer: Sizes and Dimensions are Approximate, Actual May Vary.



**Taylor Haas**  
303-665-7368  
taylorh@coloradorpm.com  
<https://www.coloradorpm.com/available-rental-properties-denver>



Scan code  
for more  
property  
details

