

Single Family



614 SQFT



1 Bed



1 Baths



Taylor Haas

303-665-7368

taylorh@coloradorpm.com

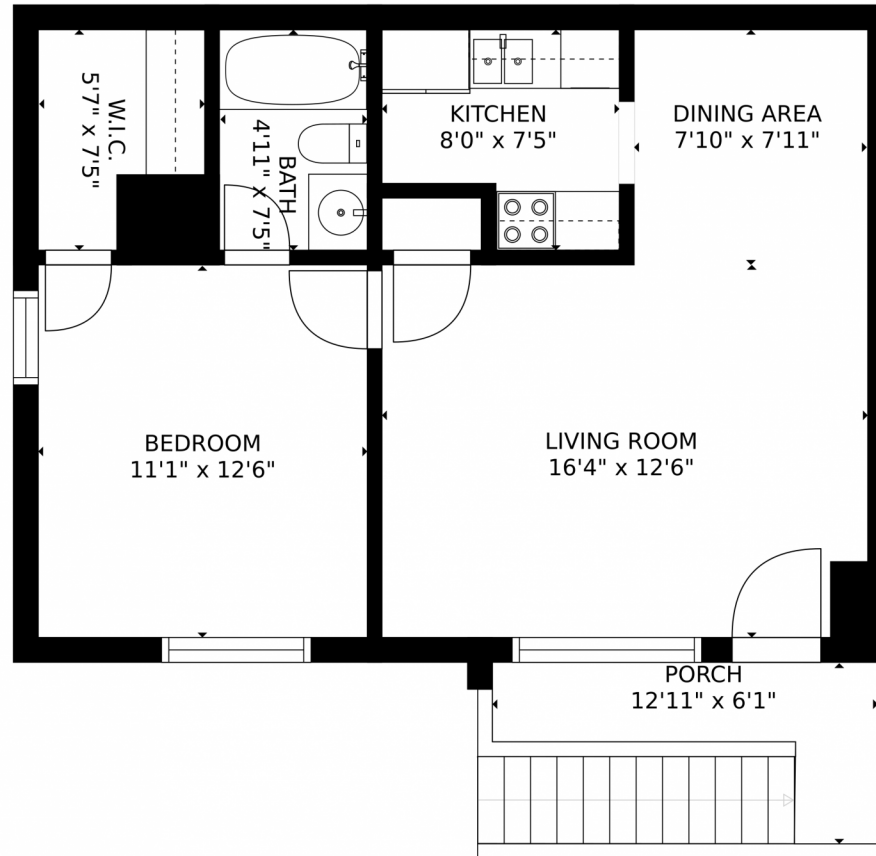
<https://www.coloradorpm.com/available-rental-properties-denver>



Scan code
for more
property
details



1165 South Oneida Street, Denver, CO 80224 – main floor



GROSS INTERNAL AREA
FLOOR 1: 568 sq. ft. EXCLUDED AREAS:
PORCH: 44 sq. ft.
TOTAL: 568 sq. ft.
MEASUREMENTS CALCULATED BY V1Photos.com ARE DEEMED HIGHLY RELIABLE BUT NOT GUARANTEED.



Disclaimer: Sizes and Dimensions are Approximate, Actual May Vary.



Taylor Haas
303-665-7368
taylorh@coloradorpm.com
<https://www.coloradorpm.com/available-rental-properties-denv>

