

Condominium



1490 SQFT



3 Beds



3 Baths



**Taylor Haas**

303-665-7368

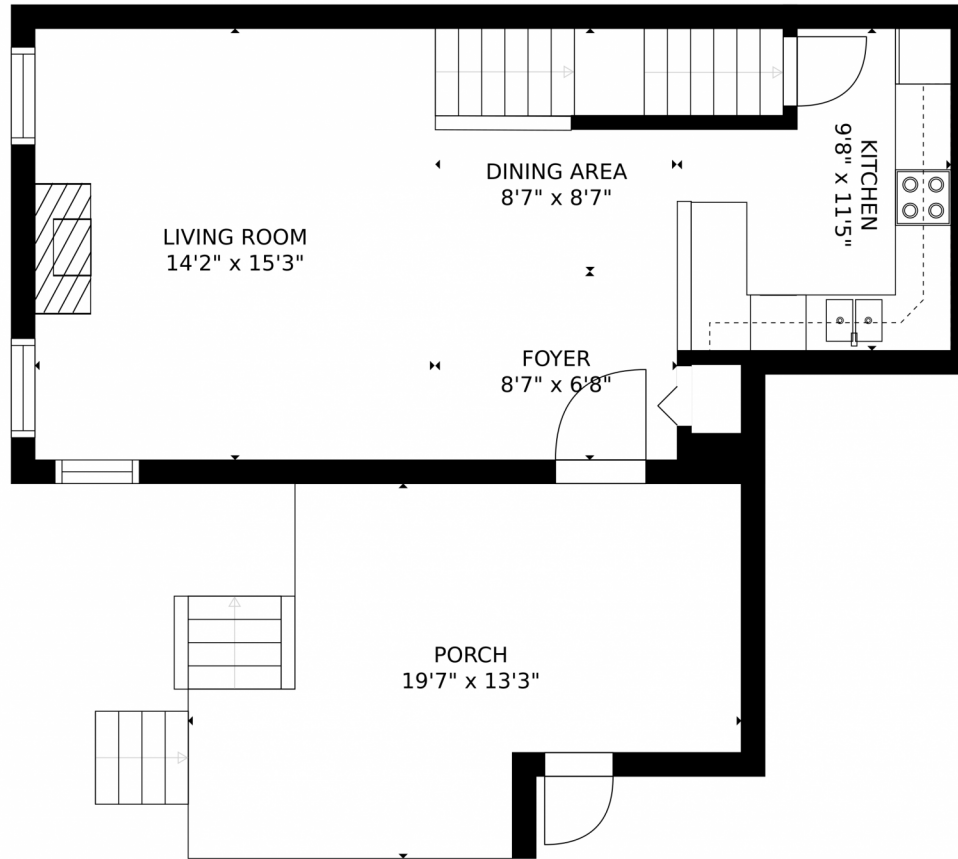
taylorh@coloradorpm.com

<https://www.coloradorpm.com/available-rental-properties-denver>

Scan code  
for more  
property  
details



1010 Magic Lamp Way, Monument, CO 80132 – Main Floor



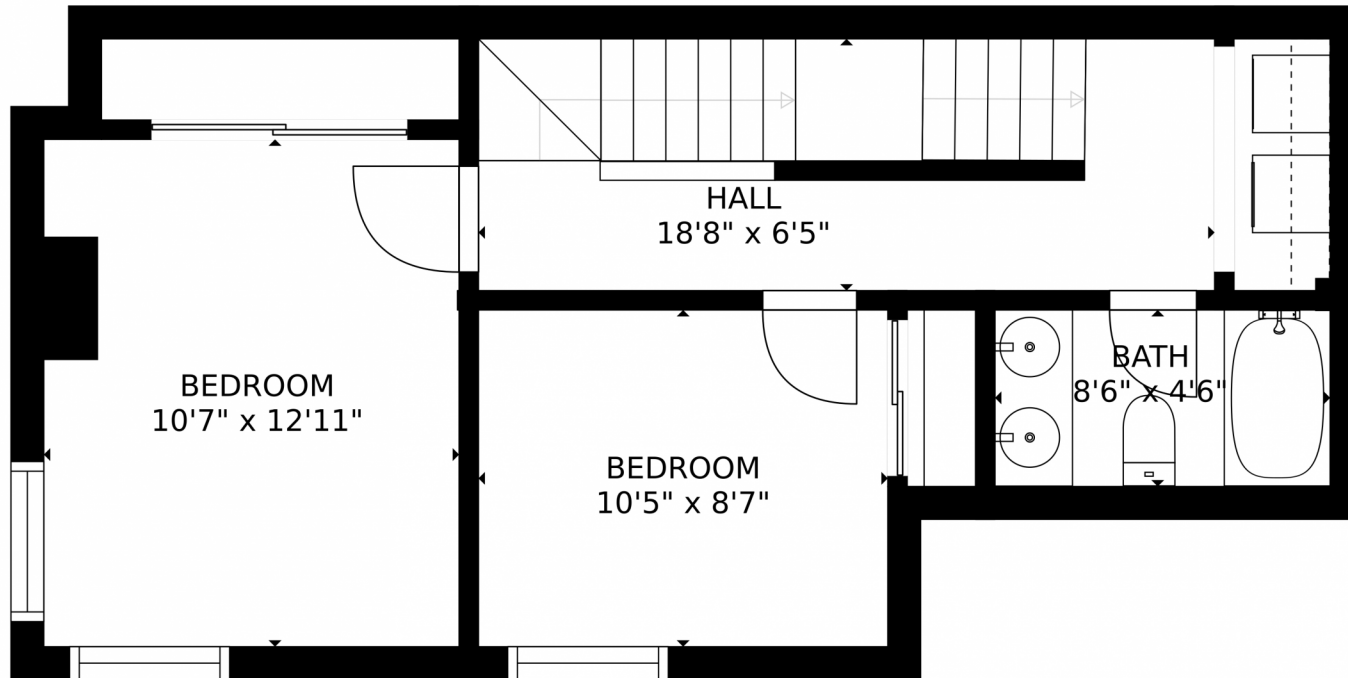
GROSS INTERNAL AREA  
FLOOR 1: 78 sq. ft., FLOOR 2: 467 sq. ft.  
FLOOR 3: 455 sq. ft., FLOOR 4: 333 sq. ft.  
EXCLUDED AREAS: , UNFINISHED BASEMENT: 363 sq. ft.  
PORCH: 202 sq. ft.  
TOTAL: 1333 sq. ft.  
MEASUREMENTS CALCULATED BY V1Photos.com ARE DEEMED HIGHLY RELIABLE BUT NOT GUARANTEED.

Disclaimer: Sizes and Dimensions are Approximate, Actual May Vary.



**Taylor Haas**  
303-665-7368  
taylorh@coloradorpm.com  
<https://www.coloradorpm.com/available-rental-properties-denver>





GROSS INTERNAL AREA  
FLOOR 1: 78 sq. ft., FLOOR 2: 467 sq. ft.  
FLOOR 3: 455 sq. ft., FLOOR 4: 333 sq. ft.  
EXCLUDED AREAS: , UNFINISHED BASEMENT: 363 sq. ft.  
PORCH: 202 sq. ft.  
TOTAL: 1333 sq. ft.  
MEASUREMENTS CALCULATED BY V1Photos.com ARE DEEMED HIGHLY RELIABLE BUT NOT GUARANTEED.

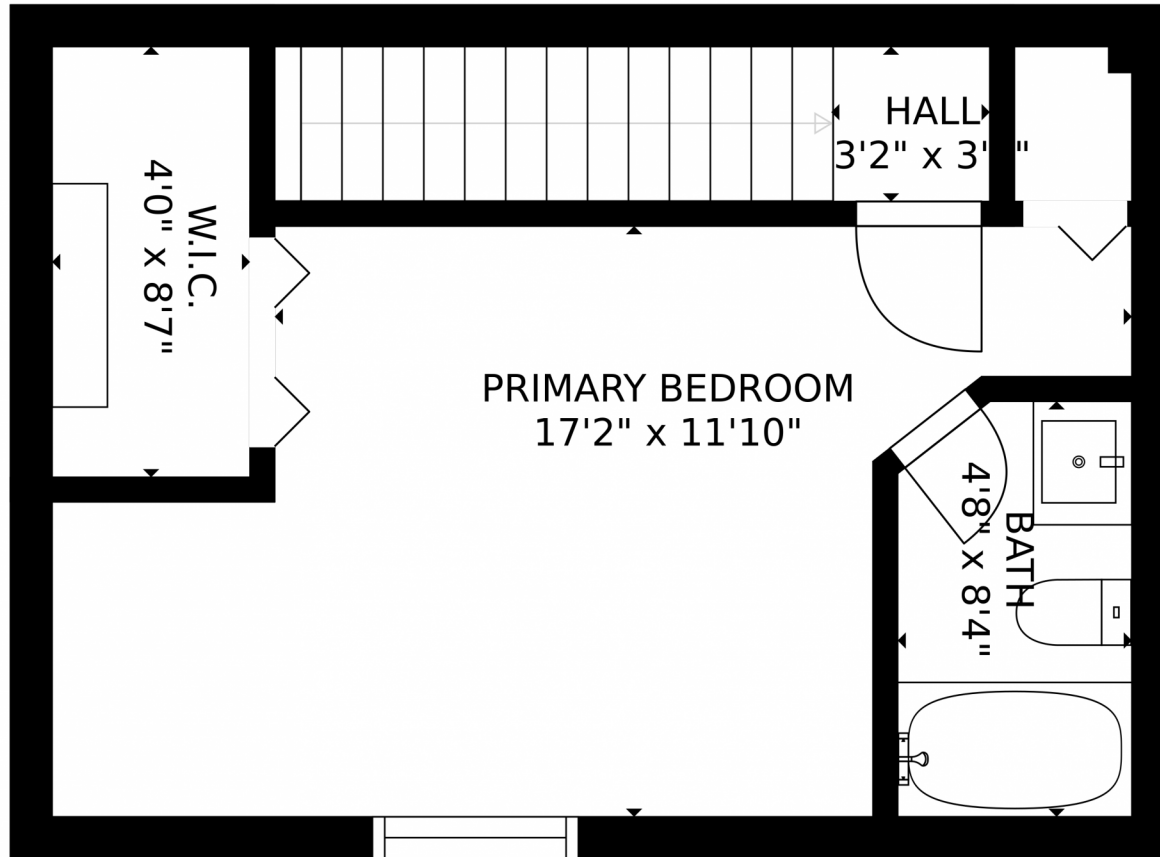


Disclaimer: Sizes and Dimensions are Approximate, Actual May Vary.



**Taylor Haas**  
303-665-7368  
taylorh@coloradorpm.com  
<https://www.coloradorpm.com/available-rental-properties-denver>





GROSS INTERNAL AREA  
FLOOR 1: 78 sq. ft., FLOOR 2: 467 sq. ft.  
FLOOR 3: 455 sq. ft., FLOOR 4: 333 sq. ft.  
EXCLUDED AREAS: , UNFINISHED BASEMENT: 363 sq. ft.  
PORCH: 202 sq. ft.  
TOTAL: 1333 sq. ft.  
MEASUREMENTS CALCULATED BY V1Photos.COM ARE DEEMED HIGHLY RELIABLE BUT NOT GUARANTEED.

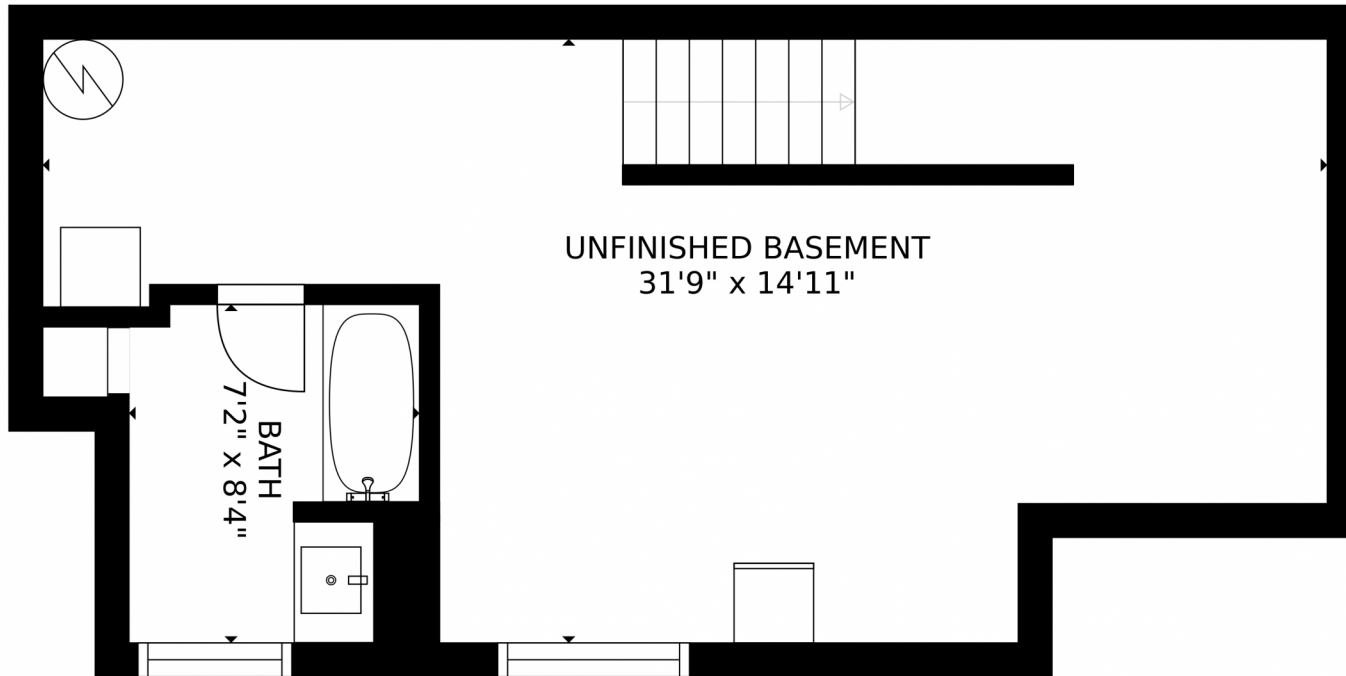


Disclaimer: Sizes and Dimensions are Approximate, Actual May Vary.



**Taylor Haas**  
303-665-7368  
taylorh@coloradorpm.com  
<https://www.coloradorpm.com/available-rental-properties-denver>





GROSS INTERNAL AREA  
FLOOR 1: 78 sq. ft, FLOOR 2: 467 sq. ft  
FLOOR 3: 455 sq. ft, FLOOR 4: 333 sq. ft  
EXCLUDED AREAS: , UNFINISHED BASEMENT: 363 sq. ft  
PORCH: 202 sq. ft  
TOTAL: 1333 sq. ft

MEASUREMENTS CALCULATED BY V1Photos.com ARE DEEMED HIGHLY RELIABLE BUT NOT GUARANTEED.



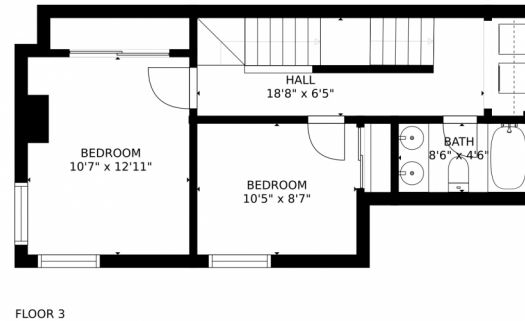
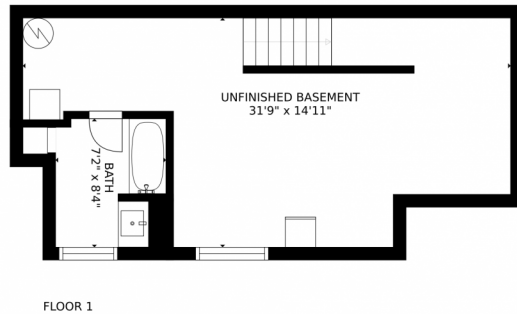
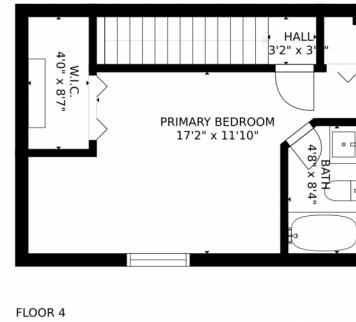
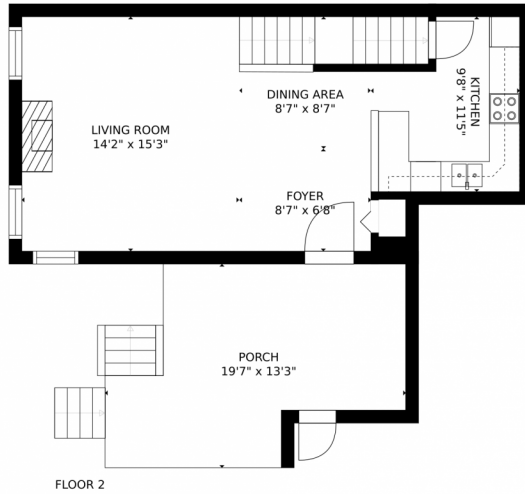
Disclaimer: Sizes and Dimensions are Approximate, Actual May Vary.



**Taylor Haas**  
303-665-7368  
taylorh@coloradorpm.com  
<https://www.coloradorpm.com/available-rental-properties-denver>



# 1010 Magic Lamp Way, Monument, CO 80132 – All Levels



GROSS INTERNAL AREA  
FLOOR 1: 78 sq. ft., FLOOR 2: 467 sq. ft.  
FLOOR 3: 455 sq. ft., FLOOR 4: 333 sq. ft.  
EXCLUDED AREAS: UNFINISHED BASEMENT: 363 sq. ft.  
PORCH: 202 sq. ft.  
TOTAL: 1333 sq. ft.  
MEASUREMENTS CALCULATED BY V1Photos.COM ARE DEEMED HIGHLY RELIABLE BUT NOT GUARANTEED.



Disclaimer: Sizes and Dimensions are Approximate, Actual May Vary.



**Taylor Haas**  
303-665-7368  
taylorh@coloradorpm.com  
<https://www.coloradorpm.com/available-rental-properties-denver>

