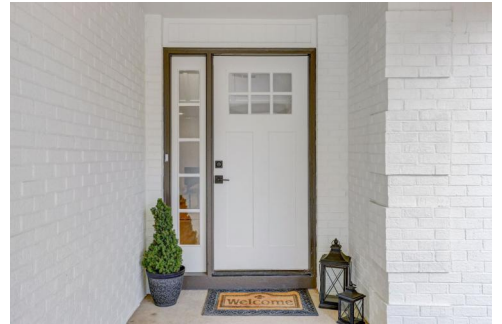




6005 W Jefferson Avenue
 Denver, CO 80235
 COMMUNITY: Academy

MLS # 5919411
 PRICE \$750,000



Single Family 2784 SQFT 4 Beds 3 Baths 2 Car 0.17 Acre

PROPERTY DETAILS

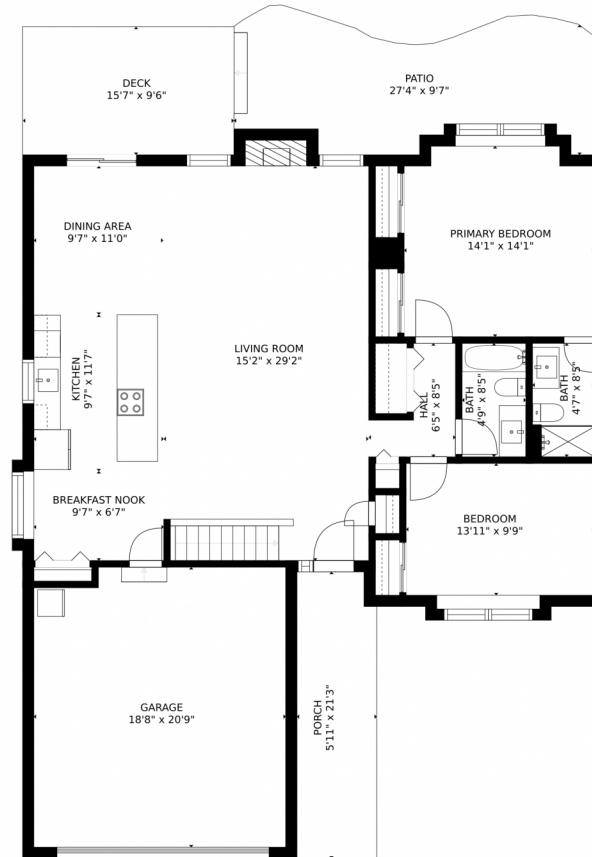
One-of-a-kind, STUNNING home! This beautiful ranch style home is completely updated and offers a gourmet kitchen with gleaming Quartz counters, new soft close cabinets with maximized storage space, stainless steel appliances to include a gas stove and microwave drawer, mini beverage cooler for your convenience, pantry, and an elegant 10' kitchen island - perfect for entertaining during the Holidays! Plus, enjoy the gorgeous and easy to maintain engineered wood floors, a spectacular skylight, cozy gas fireplace, spacious primary bedroom with double closets and private 3/4 bathroom, main floor laundry, sunny bedroom #2, updated main floor full bathroom, fresh paint, new trim and doors, new carpet, and finished basement with 2 additional bedrooms both with walk-in closets, updated 3/4 bathroom and open great room! This home also offers new energy efficient double pane windows, new impact resistant roof, energy saving solar panels, central air conditioning, low maintenance xeriscape yard, and so much more. All you have to do is move in! Property is centrally located near major highways, shopping, restaurants, golf courses, parks and trails.



Danielle Marcus
 303-669-7974
 danielle@themarcusteam.com
<https://www.themarcusteam.com>



6005 W Jefferson Avenue, Denver, CO 80235 – Main Level



GROSS INTERNAL AREA
FLOOR 1: 1195 sq. ft. FLOOR 2: 1300 sq. ft.
EXCLUDED AREAS: , GARAGE: 379 sq. ft.
DECK: 154 sq. ft. PATIO: 221 sq. ft.
PORCH: 123 sq. ft.
TOTAL: 2494 sq. ft.

MEASUREMENTS CALCULATED BY V1Photos.com ARE DEEMED HIGHLY RELIABLE BUT NOT GUARANTEED.



Disclaimer: Sizes and Dimensions are Approximate, Actual May Vary.



Danielle Marcus

303-669-7974

danielle@themarkusteam.com

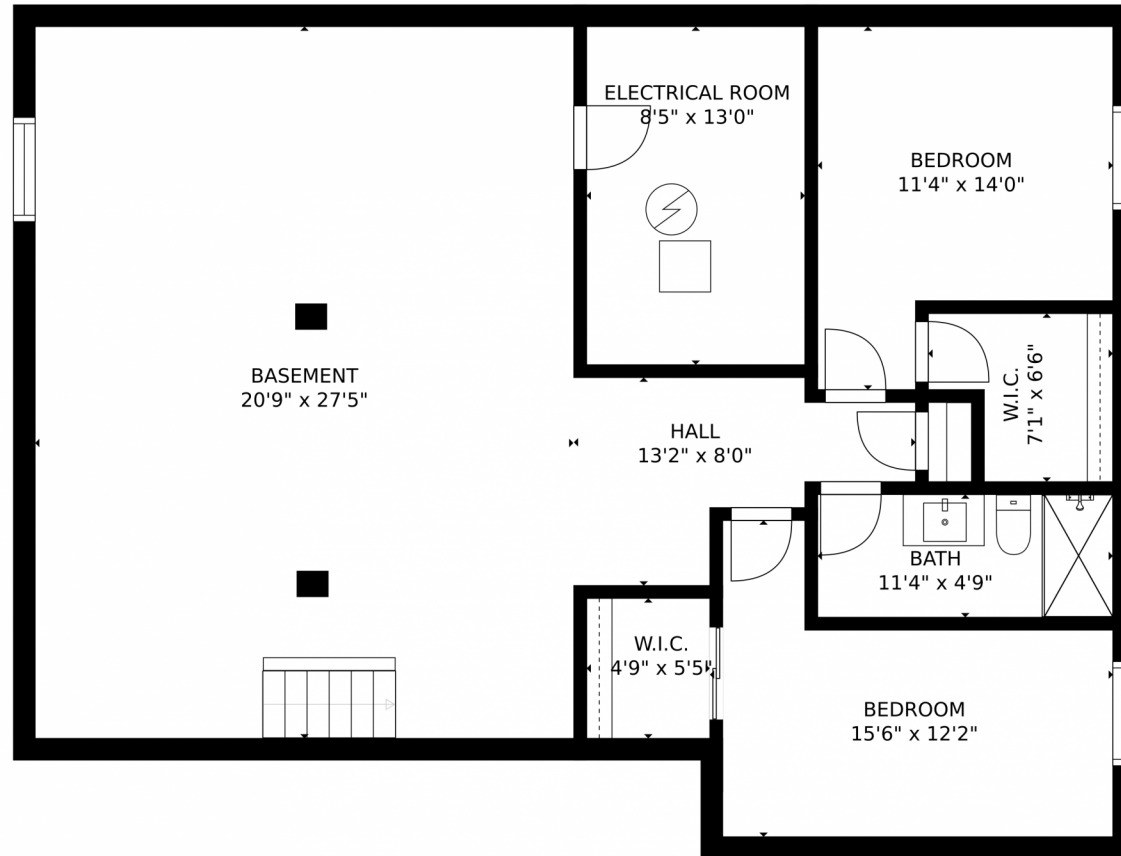
<https://www.themarkusteam.com>



Scan code
for more
property
details



6005 W Jefferson Avenue, Denver, CO 80235 – Lower Level



GROSS INTERNAL AREA
FLOOR 1: 1195 sq. ft. FLOOR 2: 1300 sq. ft.
EXCLUDED AREAS: GARAGE: 379 sq. ft.
DECK: 154 sq. ft. PATIO: 221 sq. ft.
PORCH: 123 sq. ft.
TOTAL: 2494 sq. ft.

MEASUREMENTS CALCULATED BY V1Photos.COM ARE DEEMED HIGHLY RELIABLE BUT NOT GUARANTEED.



Disclaimer: Sizes and Dimensions are Approximate, Actual May Vary.



Danielle Marcus

303-669-7974

danielle@themarkusteam.com

<https://www.themarkusteam.com>



Scan code
for more
property
details



6005 W Jefferson Avenue, Denver, CO 80235 – All Levels



GROSS INTERNAL AREA
FLOOR 1: 1195 sq. ft. FLOOR 2: 1300 sq. ft.
EXCLUDED AREAS: GARAGE: 379 sq. ft.
DECK: 154 sq. ft. PATIO: 221 sq. ft.
PORCH: 123 sq. ft.
TOTAL: 2494 sq. ft.
MEASUREMENTS CALCULATED BY V1Photos.COM ARE DEEMED HIGHLY RELIABLE BUT NOT GUARANTEED.



Disclaimer: Sizes and Dimensions are Approximate, Actual May Vary.



Danielle Marcus
303-669-7974
danielle@themarkusteam.com
<https://www.themarkusteam.com>

