

1902 Clermont Street
Denver, CO 80220



Single Family



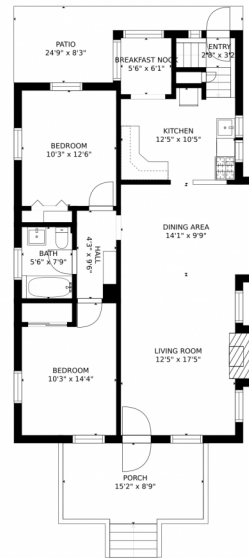
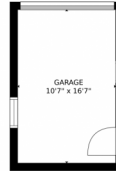
2000 SQFT



Jaden Combs
303-324-1437
jaden@kentwood.com



1902 Clermont Street, Denver, CO 80220 – Main Level



GROSS INTERNAL AREA
FLOOR 1: 873 sq. ft, FLOOR 2: 957 sq. ft
EXCLUDED AREAS: , GARAGE: 176 sq. ft
PATIO: 125 sq. ft, PORCH: 128 sq. ft
TOTAL: 1829 sq. ft

MEASUREMENTS CALCULATED BY V1Photos.COM ARE DEEMED HIGHLY RELIABLE BUT NOT GUARANTEED.



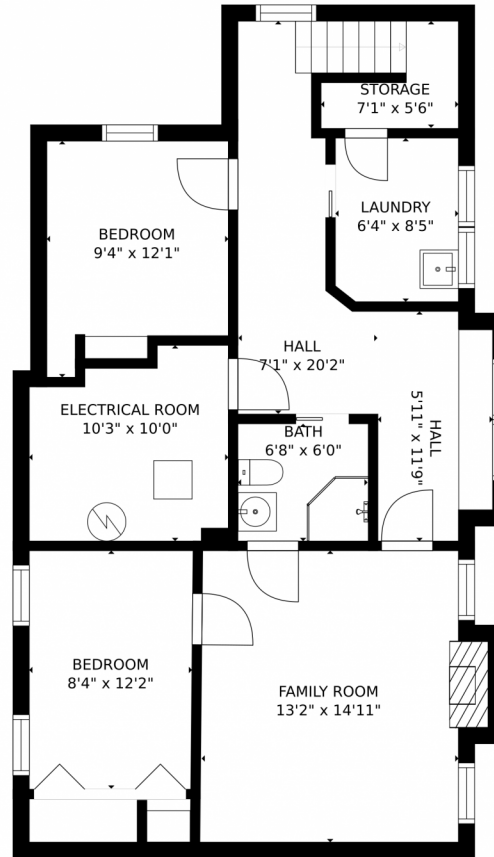
Disclaimer: Sizes and Dimensions are Approximate, Actual May Vary.



Jaden Combs
303-324-1437
jaden@kentwood.com



1902 Clermont Street, Denver, CO 80220 – Basement



GROSS INTERNAL AREA
FLOOR 1: 873 sq. ft, FLOOR 2: 957 sq. ft
EXCLUDED AREAS: , GARAGE: 176 sq. ft
PATIO: 125 sq. ft, PORCH: 128 sq. ft
TOTAL: 1829 sq. ft

MEASUREMENTS CALCULATED BY V1Photos.COM ARE DEEMED HIGHLY RELIABLE BUT NOT GUARANTEED.



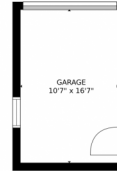
Disclaimer: Sizes and Dimensions are Approximate, Actual May Vary.



Jaden Combs
303-324-1437
jaden@kentwood.com



1902 Clermont Street, Denver, CO 80220 – All Levels



GROSS INTERNAL AREA
FLOOR 1: 873 sq. ft, FLOOR 2: 957 sq. ft
EXCLUDED AREAS: , GARAGE: 176 sq. ft
PATIO: 125 sq. ft, PORCH: 128 sq. ft
TOTAL: 1829 sq. ft
MEASUREMENTS CALCULATED BY V1Photos.com ARE DEEMED HIGHLY RELIABLE BUT NOT GUARANTEED.



Disclaimer: Sizes and Dimensions are Approximate, Actual May Vary.



Jaden Combs
303-324-1437
jaden@kentwood.com

