



9055 Holland Street
Westminster, CO 80021
COMMUNITY: Kings Mill

MLS # 7666405
PRICE \$625,000



Single Family



2958 SQFT



4 Beds



2/1 Baths



2 Car



0.15 Acre

PROPERTY DETAILS

Welcome home to Kings Mill-Standley Lake! This sprawling two story abode is move in ready to the max featuring all brand new hardwood flooring, new carpet, new tile, a freshly remastered kitchen, recently remastered bathrooms, new Quartz countertops throughout, many new lighting features and fixtures, and is sparkling clean for you! The main level boasts a lovely entertainment set up with a formal living room greeting your guests as they arrive which is open to the formal dining space. Quietly nestled at the back of the main level you will find another family room and the kitchen and breakfast nook. The main level is completed by a perfectly placed powder room for guest use along with the laundry room which includes the washer and dryer. Upstairs a phenomenal owner's suite is found showcasing a private bathroom and generously sized walk in closet. Also located on the upper level are three additional bedrooms for your peace of mind and security, allowing for room to grow or a home office space and so much more. The upper level is completed by a secondary full bathroom. A generously sized backyard with mature trees is found as well, accessible from your family room and ready for your next Summer BBQ with family and friends. Standley Lake Regional Park is practically in your backyard, just about a 10 minute walk down the community walking path from your new home to arrive at the back end of the park, offering a 1,063 acre lake that you can



Tatyana Sturm

720-350-5909

tatyana@exitrealtydtc.com

<https://thestorckteam.com>

Scan code
for more
property
details



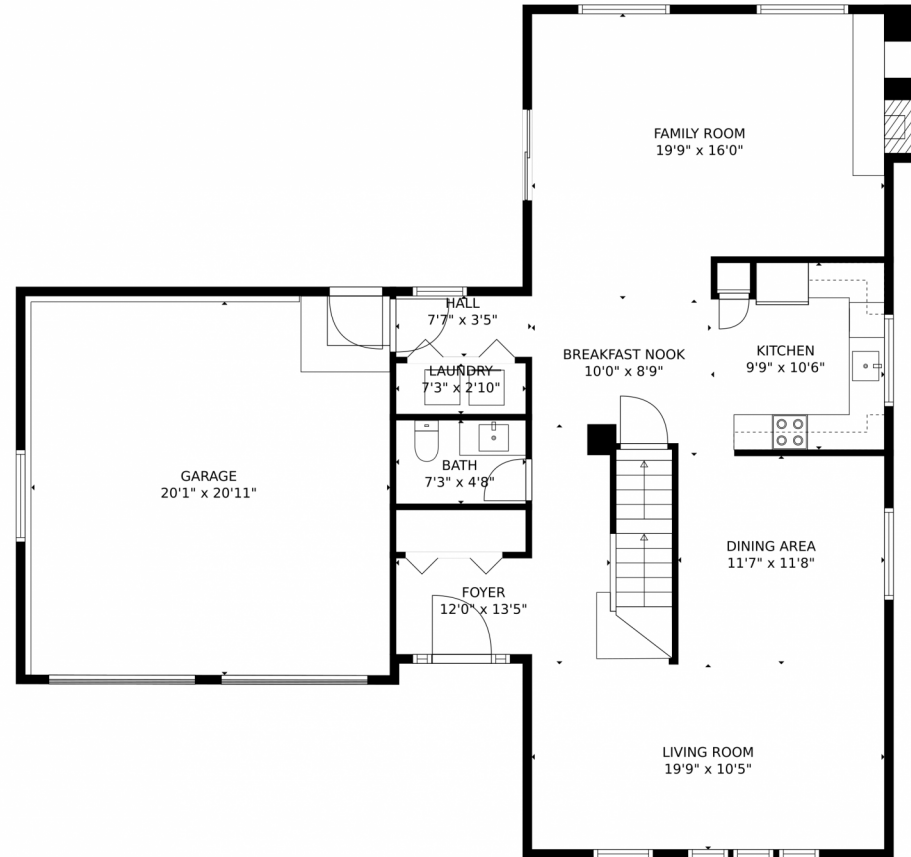
paddle board on from May through September along with camping, party venues, and miles upon miles of trails. Three community parks are within walking distance of your new home as well including the Kings Mill Park offering a skate park space along with playground and tennis courts. The Mission Commons Shopping Center is also just a short drive East on 88th Ave offering plenty of your favorite eateries along with Home Depot, Costco, and even Urban Air Adventure Park.



Tatyana Sturm
720-350-5909
tatyana@exitrealtydtc.com
<https://thestorckteam.com>



9055 Holland Street, Westminster, CO 80021 – Main Level



GROSS INTERNAL AREA
FLOOR 1: 103 sq. ft, FLOOR 2: 1097 sq. ft
FLOOR 3: 837 sq. ft, EXCLUDED AREAS:
UNFINISHED BASEMENT: 788 sq. ft, GARAGE: 434 sq. ft
TOTAL: 2036 sq. ft
MEASUREMENTS CALCULATED BY V1Photos.com ARE DEEMED HIGHLY RELIABLE BUT NOT GUARANTEED.

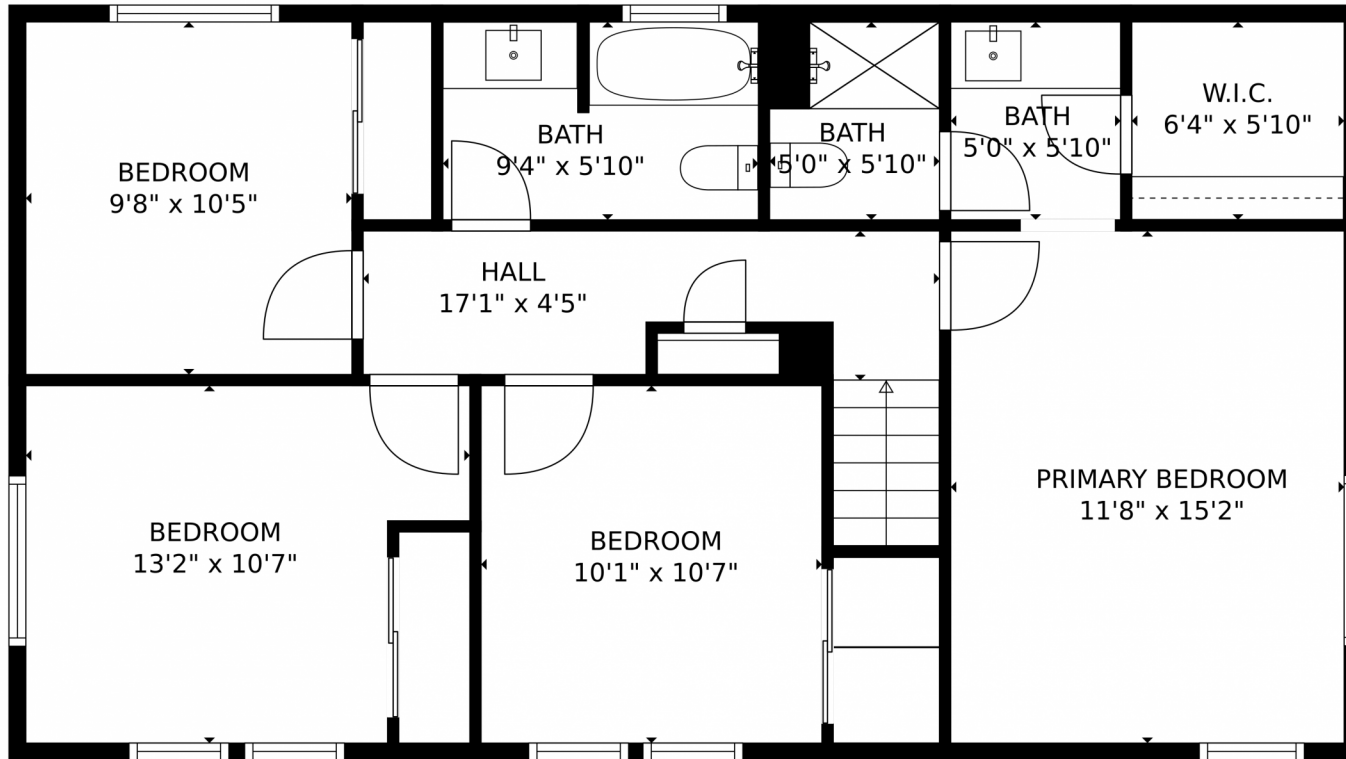


Disclaimer: Sizes and Dimensions are Approximate, Actual May Vary.



Tatyana Sturm
720-350-5909
tatyana@exitrealtydtc.com
<https://thestorckteam.com>





GROSS INTERNAL AREA
FLOOR 1: 103 sq. ft, FLOOR 2: 1097 sq. ft
FLOOR 3: 837 sq. ft, EXCLUDED AREAS:
UNFINISHED BASEMENT: 788 sq. ft, GARAGE: 434 sq. ft
TOTAL: 2036 sq. ft
MEASUREMENTS CALCULATED BY V1Photos.com ARE DEEMED HIGHLY RELIABLE BUT NOT GUARANTEED.

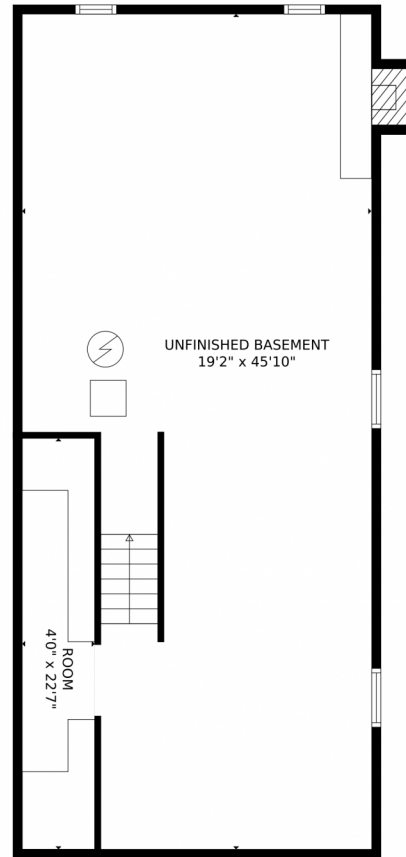


Disclaimer: Sizes and Dimensions are Approximate, Actual May Vary.



Tatyana Sturm
720-350-5909
tatyana@exitrealtydtc.com
<https://thestorckteam.com>





GROSS INTERNAL AREA
FLOOR 1: 103 sq. ft, FLOOR 2: 1097 sq. ft
FLOOR 3: 837 sq. ft, EXCLUDED AREAS:
UNFINISHED BASEMENT: 788 sq. ft, GARAGE: 434 sq. ft
TOTAL: 2036 sq. ft
MEASUREMENTS CALCULATED BY V1Photos.com ARE DEEMED HIGHLY RELIABLE BUT NOT GUARANTEED.



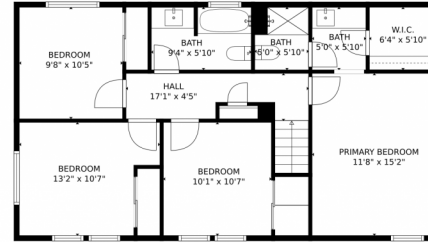
Disclaimer: Sizes and Dimensions are Approximate, Actual May Vary.



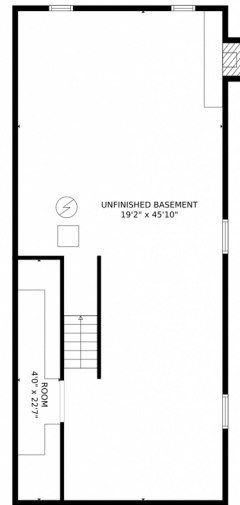
Tatyana Sturm
720-350-5909
tatyana@exitrealtydtc.com
<https://thestorckteam.com>



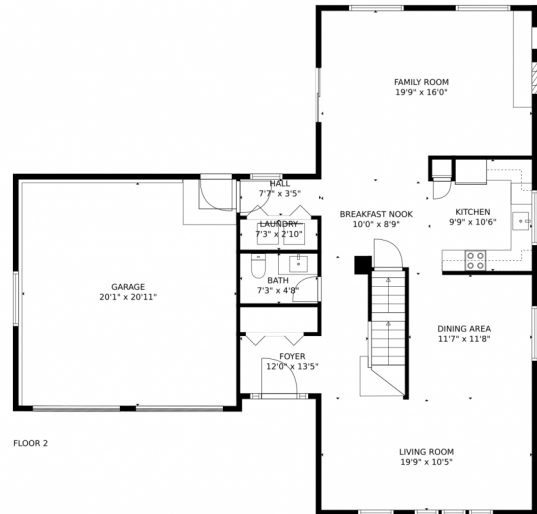
9055 Holland Street, Westminster, CO 80021 – All Levels



FLOOR 3



FLOOR 1



FLOOR 2

GROSS INTERNAL AREA
FLOOR 1: 103 sq. ft, FLOOR 2: 1097 sq. ft
FLOOR 3: 837 sq. ft, EXCLUDED AREAS:
UNFINISHED BASEMENT: 788 sq. ft, GARAGE: 434 sq. ft
TOTAL: 2036 sq. ft

MEASUREMENTS CALCULATED BY V1Photos.com ARE DEEMED HIGHLY RELIABLE BUT NOT GUARANTEED.



Disclaimer: Sizes and Dimensions are Approximate, Actual May Vary.



Tatyana Sturm
720-350-5909
tatyana@exitrealttydc.com
<https://thestorckteam.com>



Scan code
for more
property
details